

TURLOUGHMORE MAGNIFICENT



AI CODE
AU4683



BREED
AU



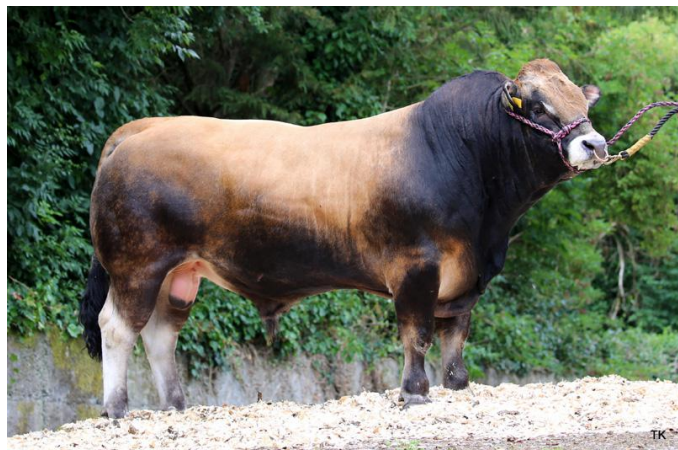
DATE OF BIRTH
20-JAN-2017



PEDIGREE
**Despagnou X Johnstown Calum
(MGS)**



POLLED STATUS
Horned



MYOSTATIN +/- **FL94L: 2**

PEDIGREE ROYALTY **€0**

Bull Description

- A super terminal sire
- Use to produce replacements without compromising on terminal traits
- Magnificent's dam is a producer of superior carcass animals

€16.00 inc VAT

Star Rating (Within Breed)	Economic Indexes May 2020	€ value per progeny	Index Reliability	Comment	Star Rating (Across all beef breeds)
★★★★★	Replacement Index	€257	86	V High	★★★★★
★★★★★	Terminal Index	€141	94	V High	★★★★★
★★★★★	Dairy Beef Index	€176	94		★★★★★

Star Rating (Within Breed)	Key Profit Traits	Index Value	Trait Reliability	Comment	Star Rating (Across all beef breeds)
-------------------------------	-------------------	-------------	-------------------	---------	-----------------------------------------

EXPECTED PROGENY PERFORMANCE

Calving Difficulty	Beef Heifers (%3 & 4)	6.45%	97	V High	
	Beef Cows (%3 & 4)	3.02%	98	V High	
★★★★☆	Gestation Length (days)	0.61%	99	V High	★★★★★
★★★★★	Docility (Scale)	0.1	98	V High	★★★★★
★★★★☆	Carcass Weight (Kg)	19.1 kg	99	V High	★★★★☆☆
★★★★☆☆	Carcass Conf. (Scale 1-15)	1.79 scale	99	V High	★★★★☆☆

EXPECTED DAUGHTER BREEDING PERFORMANCE

Calving Difficulty	Daughter calving difficulty (%3 & 4)	4.53%	97	V High	
★★★☆☆	Daughter milk (kg)	3.2 kg	84	V High	★★★★☆☆
★★★★★	Daughter calving interval (days)	-8.6 days	56	Average	★★★★★

ICBF Proof Date: 19-MAR-24