

TURLOUGHMORE MAGNIFICENT



AI CODE
AU4683



BREED
AU



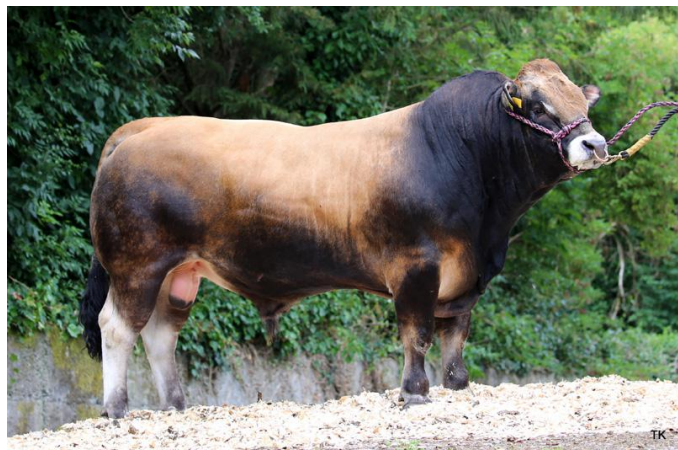
DATE OF BIRTH
20-JAN-2017



PEDIGREE
Despagnou X Johnstown Calum (MGS)



POLLED STATUS
Horned



MYOSTATIN **+/+ FL94L: 2**

PEDIGREE ROYALTY **€0**

Bull Description

- A super terminal sire
- Use to produce replacements without compromising on terminal traits
- Magnificent's dam is a producer of superior carcass animals

€16.00 inc VAT

	Index	Rel	Comment	Calving Risk
DBI	€196	96		
Dairy Cow Cdiff	3.59%	99	V High	
Dairy Heifer Cdiff	8.09%	95	V High	

Star Rating (Within Breed)	Economic Indexes	€ value per progeny	Index Reliability	Comment	Star Rating (Across all beef breeds)
★★★★★	Replacement Index	€238	97	V High	★★★★★
★★★★★	Terminal Index	€171	96	V High	★★★★★
★★★★★	Dairy Beef Index	€196	96		★★★★★

Star Rating (Within Breed)	Key Profit Traits	Index Value	Trait Reliability	Comment	Star Rating (Across all beef breeds)
-------------------------------	-------------------	-------------	-------------------	---------	---

EXPECTED PROGENY PERFORMANCE

Calving Difficulty	Beef Heifers (%3 & 4)	6.5%	98	V High	
	Beef Cows (%3 & 4)	3.17%	98	V High	
★★★★☆	Gestation Length (days)	0.64%	99	V High	★★★★★
★★★★★	Docility (Scale)	0.11	99	V High	★★★★★
★★★★☆	Carcass Weight (Kg)	19.4 kg	99	V High	★★★★☆☆
★★★★☆☆	Carcass Conf. (Scale 1-15)	1.8 scale	99	V High	★★★★☆☆

EXPECTED DAUGHTER BREEDING PERFORMANCE

Calving Difficulty	Daughter calving difficulty (%3 & 4)	4.08%	98	V High	
★★★☆☆	Daughter milk (kg)	2.6 kg	95	V High	★★★★☆☆
★★★★★	Daughter calving interval (days)	-5.7 days	80	V High	★★★★★