

IMOLA J9F7



AI CODE
ZML



SHORT NAME
Imola



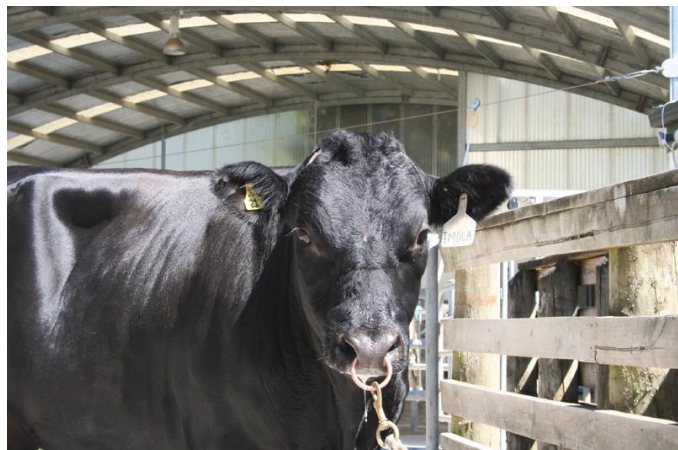
BREED
JE



PEDIGREE
Murmur X Espresso X Cutter
47% Hol



PEDIGREE STATUS



HBNO. JERNZLM000000512659	BRED BY CRV Ambreed
aAa 231456	Beta Casein
DATE OF BIRTH	COAT COLOUR
KAPPA CASEIN	POLLED STATUS

€19.00 inc VAT

EBI & Sub-indexes	€	Rel
EBI	€81	91
PRODUCTION	€39	98
FERTILITY	€0	84
CALVING	€14	94
BEEF	€-64	92
HEALTH	€10	85
MAINTENANCE	€63	92
MANAGEMENT	€4	74

Health		Rel
LAMENESS	0	60
SCC	0.04	96
MASTITIS %	0.03	80

Mangement		Rel
MILK TIME (SEC)	-7.21	92
MILK TEMPT	0.03	54

Production		Rel
MILK KGS	-80	98
FAT KGS	5	98
PROTEIN KGS	2.9	98
FAT %	+0.14	
PROTEIN %	+0.1	

Mangement		Rel
CALVING DIFF	2.49	92
DAU CALVING	4.58	89
GEST LENGTH	-1.92	98
CALF MORT	0.28	88
HEIFER	5.36	89

Fertility		Rel
CALVING INT (DAYS)	0.22	84
SURVIVAL %	0.3	83

Beef		Rel
CARC WT	-15.5	93
CARC CONF	-0.92	91