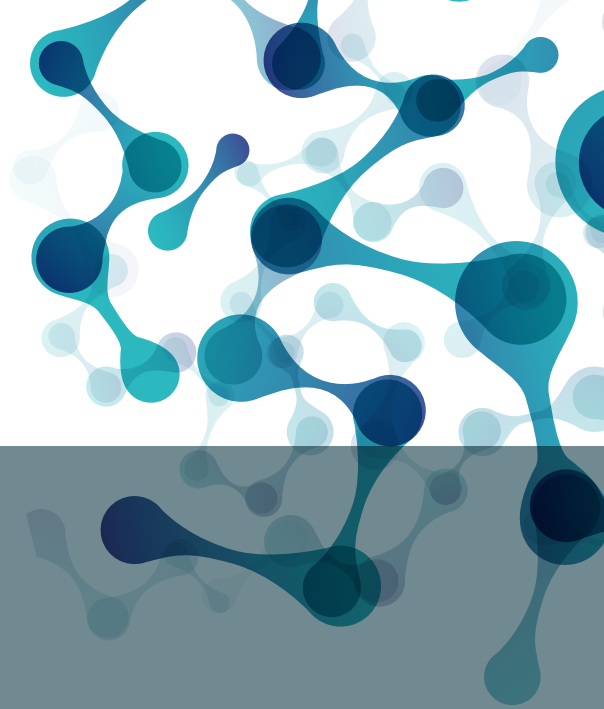


DAIRY-BEEF SIREs 2022

March
2022



| ANGUS FOR DAIRY COWS | Bull | Name | Beef Value | Carc Wt | Carc Conf | Calving Value | Gestation | Dairy Cow Cdiff | Dairy Cow Cdiff Rel | DBI | DBI Rel | Use on |
|----------------------|---------------|------------------------------|------------|---------|-----------|---------------|-----------|-----------------|---------------------|------|---------|---------------|
| | AA4323 | TREE BRIDGE POWYS S589 | €85 | 20.8 | 1.2 | -€23 | 0.2 | 5.0% | 95% | €62 | 94% | Mature cows |
| | AA7305 | HW DELIGHTFUL V769 | €78 | 19.9 | 0.7 | €25 | -1.0 | 3.6% | 57% | €103 | 52% | Proof pending |
| | AA6682 | HW LORD HORATIO V538 | €67 | 14.5 | 0.8 | €29 | -2.1 | 3.8% | 81% | €95 | 58% | Proof pending |
| | AA4640 | HW FARGHAL T516 | €66 | 14.9 | 0.9 | €21 | -0.6 | 3.3% | 98% | €87 | 94% | 2nd Calvers |
| | AA4088 | INTELAGRI MAVERICK E.T. (ET) | €59 | 7.2 | 0.7 | €49 | -3.2 | 2.9% | 99% | €108 | 96% | 2nd Calvers |
| | AA2309 | ST AODAIN L MASTER | €54 | 12.3 | 0.8 | €10 | -0.2 | 3.9% | 98% | €64 | 96% | 2nd Calvers |
| | AA5280 | COOLRAIN PATRIARCH | €46 | 8.9 | 0.7 | €32 | -2.0 | 3.6% | 97% | €79 | 88% | Mature cows |
| | AA7308 | HW RED LAMBORGHINI V772 | €37 | 6.4 | 0.4 | €27 | 0.0 | 2.7% | 43% | €65 | 37% | Mature cows |
| | AA7485 | PROHURST EOGHAN W759 | €95 | 23.7 | 0.9 | €51 | -3.0 | 2.9% | 57% | €146 | 52% | Test |
| AA7506 | TOWER TOMMIE | €76 | 16.1 | 0.9 | €52 | -2.9 | 2.7% | 59% | €128 | 53% | Test | |
| AA7500 | TARA TERMINUS | €58 | 10.0 | 0.9 | €40 | -1.6 | 2.9% | 48% | €98 | 44% | Test | |

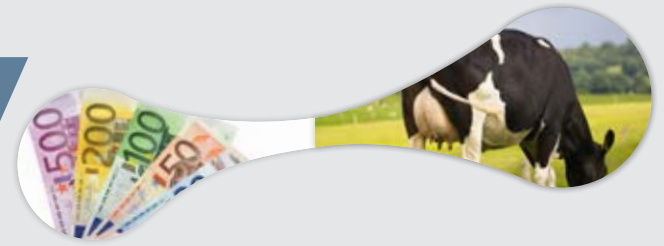
| ANGUS FOR DAIRY MAIDENS | Bull | Name | Beef Value | Carc Wt | Carc Conf | Calving Value | Gestation | Dairy Heifer Cdiff | Heifer Cdiff Rel | DBI | DBI Rel | Use on |
|-------------------------|--------|----------------------------|------------|---------|-----------|---------------|-----------|--------------------|------------------|------|---------|---------|
| | AA4089 | INTELAGRI MATTEO E.T. (ET) | €48 | 8.0 | 0.7 | €62 | -3.8 | 6.4% | 99% | €111 | 97% | Maidens |
| | AA4631 | GABRIEL PAT 1949 | €45 | 8.4 | 0.6 | €57 | -2.7 | 6.2% | 92% | €102 | 91% | Maidens |
| | AA4632 | SALLOWGLEN JAMIE T771 | €32 | 1.8 | 0.7 | €53 | -2.7 | 6.3% | 84% | €85 | 89% | Maidens |

| HEREFORD FOR DAIRY COWS | Bull | Name | Beef Value | Carc Wt | Carc Conf | Calving Value | Gestation | Dairy Cow Cdiff | Dairy Cow Cdiff Rel | DBI | DBI Rel | Use on |
|-------------------------|-----------------------|--------------------------|------------|---------|-----------|---------------|-----------|-----------------|---------------------|-----|-------------|-------------|
| | HE6841 | GOULDINGPOLL 1 ZORO PP | €68 | 14.5 | 0.9 | €26 | -0.5 | 2.9% | 70% | €94 | 54% | Cows |
| | HE5346 | FISHER 1 PROFILE P456 | €52 | 4.9 | 0.7 | €18 | -2.0 | 3.9% | 97% | €70 | 84% | Cows |
| | HE6361 | SOLPOLL 1 SPARK PP | €43 | 5.8 | 0.5 | €22 | -0.1 | 3.2% | 72% | €66 | 51% | 2nd Calvers |
| | HE4645 | BARWISE 1 NOMAD | €42 | 7.6 | 0.5 | -€11 | 0.3 | 4.9% | 95% | €30 | 88% | Cows |
| | HE6364 | SOLPOLL 1 SONIC PP | €41 | 5.1 | 0.6 | €9 | -0.6 | 4.0% | 74% | €50 | 56% | Cows |
| | HE4641 | MOORSIDE 1 PRESIDENT | €40 | 3.3 | 0.5 | €1 | -2.9 | 5.3% | 96% | €41 | 89% | Mature cows |
| | HE4297 | FABB 1 NORTHERN STAR PP | €39 | -0.3 | 0.6 | €27 | -1.8 | 3.7% | 99% | €66 | 94% | 2nd Calvers |
| | HE4291 | ALLOWDALE ADVANCE 573 ET | €37 | 6.2 | 0.5 | €3 | -0.2 | 4.2% | 99% | €40 | 95% | Cows |
| | HE5452 | ALLOWDALE RORY 835 | €36 | 7.4 | 0.7 | €21 | -1.4 | 4.1% | 96% | €57 | 74% | Cows |
| | HE4643 | MOORSIDE 1 PANDA PP | €31 | 3.1 | 0.5 | €9 | -0.3 | 4.1% | 99% | €41 | 93% | Cows |
| HE5455 | BARWISE 1 RICOCHET PP | €17 | -4.0 | 0.4 | €40 | -2.2 | 3.0% | 92% | €57 | 68% | 2nd Calvers | |

| BELGIAN BLUE FOR DAIRY COWS | Bull | Name | Beef Value | Carc Wt | Carc Conf | Calving Value | Gestation | Dairy Cow Cdiff | Dairy Cow Cdiff Rel | DBI | DBI Rel | UK Calv Ease* *Genus UK | UK Best* *Genus UK | UK Calv Quality* *Genus UK | UK Calves* *Genus UK |
|-----------------------------|------------------------|-----------------------------|------------|---------|-----------|---------------|-----------|-----------------|---------------------|-----|---------|----------------------------|-----------------------|-------------------------------|-------------------------|
| | BB5226 | MARIUS DES PRINCES DE LIGNE | €150 | 27.4 | 2.9 | -€61 | -1.3 | 8.3% | 92% | €89 | 74% | | | | |
| | BB7272 | BBG HYBRIDE 001 DE BOULOGNE | €129 | 22.1 | 2.4 | -€106 | -0.5 | 9.4% | 39% | €23 | 34% | | | | |
| | BBX101 | KOREAS P | €119 | 21.5 | 1.8 | -€44 | 1.0 | 7.1% | 51% | €75 | 39% | | | | |
| | BB6193 | BAMS LUDDITE | €119 | 20.2 | 2.1 | -€21 | -1.2 | 7.2% | 57% | €99 | 48% | 118 | 124 | 106 | 252 |
| | BB7278 | BBG ELK 236 DE BOULOGNE | €114 | 19.4 | 2.0 | -€66 | -1.4 | 8.3% | 42% | €48 | 36% | | | | |
| | BB7221 | QUARRY BANK MONEYMAN | €111 | 19.1 | 1.9 | -€47 | 1.2 | 7.3% | 52% | €64 | 45% | 130 | 130 | 112 | 259 |
| | BB6199 | MOORSLEY LOGIC | €71 | 6.2 | 1.8 | -€2 | -1.4 | 6.1% | 88% | €70 | 66% | 130 | 108 | 98 | 83 |
| | | FOREST NORTHPOLE | | | | | | | | | | 130 | 130 | 128 | 234 |
| | | NuEra NIGHTRIDER | | | | | | | | | | 126 | 108 | 130 | 176 |
| BB7440 | TIC Test | €163 | 33.1 | 2.6 | -€55 | 1.0 | 7.0% | 39% | €108 | 36% | | | | | |
| BB8283 | VILLABLUES OXO ET Test | €157 | 30.8 | 2.7 | -€119 | 1.9 | 9.6% | 46% | €37 | 44% | | | | | |

| OTHER BREEDS FOR DAIRY COWS | Bull | Name | Beef Value | Carc Wt | Carc Conf | Calving Value | Gestation | Dairy Cow Cdiff | Dairy Cow Cdiff Rel | DBI | DBI Rel | Breed |
|-----------------------------|--------|----------------------------|------------|---------|-----------|---------------|-----------|-----------------|---------------------|------|---------|--------------|
| | AU6918 | TURLOUGHMORE NELSON | €121 | 21.3 | 2.1 | €3 | 0.0 | 4.4% | 53% | €124 | 48% | Aubrac |
| | AU4683 | TURLOUGHMORE MAGNIFICENT | €110 | 17.4 | 1.7 | €14 | 0.3 | 3.7% | 98% | €124 | 91% | Aubrac |
| | AU6685 | MOUNTCAIN ONDEE | €99 | 14.4 | 1.8 | €1 | 0.3 | 4.4% | 70% | €100 | 56% | Aubrac |
| | CH4321 | LAPON | €151 | 40.7 | 2.2 | -€59 | 2.3 | 7.2% | 88% | €92 | 88% | Charolais |
| | CH6259 | JOUJOU | €135 | 28.3 | 2.2 | -€30 | 0.3 | 5.9% | 42% | €105 | 43% | Charolais |
| | LH7470 | CARREG SAINFOIN | -€30 | -13.2 | 0.1 | €21 | 0.9 | 3.1% | 29% | -€9 | 29% | Longhorn |
| | LM7416 | POWERFUL PROPER | €136 | 25.1 | 2.2 | -€26 | 2.5 | 5.8% | 51% | €110 | 51% | Limousin |
| | LM4217 | MOONDHARRIG KNELL | €127 | 20.4 | 2.0 | -€27 | 2.9 | 5.1% | 98% | €100 | 95% | Limousin |
| | SA4604 | KNOTTOWN ROY | €100 | 21.8 | 1.1 | €33 | 0.1 | 2.9% | 86% | €133 | 88% | Salers |
| | SI7491 | LEEHERD LYNX 364 | €109 | 32.1 | 1.7 | -€42 | 1.1 | 6.5% | 43% | €68 | 46% | Simmental |
| | SI4250 | LIS-NA-RI GUCCI | €74 | 18.5 | 1.6 | -€26 | 2.2 | 5.7% | 86% | €48 | 87% | Simmental |
| | SP7494 | GARRENJAMES HENRY | €2 | -6.8 | 0.9 | €22 | -0.4 | 3.1% | 50% | €24 | 45% | Speckle Park |
| | WA2409 | EDENBANE GLENISLA FUJISAWA | -€43 | -18.0 | -0.1 | €44 | -0.4 | 2.1% | 88% | €2 | 81% | Wagyu |

PROGRESS TO IMPROVE CALVING BEEF VALUE



BEEF ON DAIRY A.I.

Security of Calving Ease

- Reliable Calving Date
- Select Bulls to suit the cow

Short Gestation

- Best Genetics for Short Gestation
- For Use late in Breeding Season

Maximise Beef Value

- Combine Beef Value & Calving
- Market Desires better beef value

Security of Conception

- All Semen passes strict controls
- Every Serve is high quality

MAXIMISING CALF CROP VALUE



Weeks 1-6

Weeks 7+

Top 60--80% Cows in Herd Dairy AI

Bottom 20-40% Cows in Herd Beef Breeds

All Cows Beef Breeds

Sexed Dairy

Conventional Dairy

Long Gest Beef eg Limousin

Short Gest Beef: eg Blue, Hereford or Angus

Highest Quality Beef: eg Belgian Blue/Hereford

PROGRESS TO IMPROVE **CALVING EASE**
SHORT GESTATION

Highly Reliable Calving Data

Highly Reliable Gestation Data

Program Focused On Calving Ease
With Quality

Example Sire: **AA4089 Matteo**

9,688 Recorded Calvings

92% Born with No Assistance

99% Born with No or Small Assistance

-3.8 Days Gestation Length



12,182 Births Recorded

280 Days Average Gestation Length



- Easy Calving Sires with Superior Beef Traits
- Dependable semen fertility
- Full range from very easy calving to elite carcass bulls with moderate calving
- Selection of truly superior bulls that combine calving & beef traits
- Progeny of high index bulls finishing 50-60 days earlier than average

OUR SEMEN QUALITY STANDARDS

| Bull Category | All Bulls | Main Catalogue |  Preg+ |  Sexed |
|---|-----------|----------------|---|--|
| Lab Quality Control Passed | ✓ | ✓ | ✓ | ✓ |
| Field Fertility Data Average or above | | ✓ | ✓ | ✓ |
| Top 10% for pregnancy rates & 2000+ Serves recorded | | | ✓ | |

Better Growth

Earlier Finishing

Genetics Indexes for Calf Sales



Example Sire: **AA4640 Fargal**

250 Recorded Carcasses

Finishing 99 Days Earlier than Average with
high percentage meeting market specifications



Check out the Progressive Genetics DairyBeef Plus Calf Project

- Matching breeders with calf buyers
- Building farmer-to-farmer relationships
- Building a sustainable outlet for your quality calves
- For Herds breeding top quality calves from B&W Cows
- 2022 target is €35 Beef Value in DairyBeef Index (DBI)

See www.progressivegenetics.ie for details

Powys

TREE BRIDGE POWYS S589

A.I. Code: AA4323

Breed: AA



| Dairy Beef Index | | €62 | Rel | 94% | ICBF, March '22 | | |
|----------------------|------|---------|---------|-------------------|-----------------|-------------|-------------|
| CALVING | | % Rel | Records | Heifers | 1st Calvers | 2nd Calvers | Mature Cows |
| Cow Calv. | 5.0% | 95% | 833 | | | | ★ |
| Calving Sub-Index | -€23 | | | | | | |
| Gestation | | Records | Longer | Average | Short | Very Short | |
| Gest Len (Days) | 0.2 | 833 | | ★ | | | |
| Beef | | % Rel | Records | Below Average | Average | Good | Excellent |
| Beef Sub-Index | €85 | 93% | 589 | | | | ★ |
| Carcass Weight | 20.8 | | | Out of Spec Wt | 10% | | |
| Carcass Conformation | 1.2 | | | Out of Spec Conf. | 1% | | |

- A truly exceptional carcass sire
- Suitable for mature dairy cows

Hortatio

HW LORD HORATIO V538

A.I. Code: AA6682

Breed: AA



| Dairy Beef Index | | €95 | Rel | 58% | ICBF, March '22 | | |
|----------------------|------|---------|---------|-------------------|-----------------|-------------|-------------|
| CALVING | | % Rel | Records | Heifers | 1st Calvers | 2nd Calvers | Mature Cows |
| Cow Calv. | 3.8% | 81% | 128 | | | | ★ |
| Calving Sub-Index | €29 | | | | | | |
| Gestation | | Records | Longer | Average | Short | Very Short | |
| Gest Len (Days) | -2.1 | 128 | | ★ | | | |
| Beef | | % Rel | Records | Below Average | Average | Good | Excellent |
| Beef Sub-Index | €67 | 38% | 0 | | | | ★ |
| Carcass Weight | 14.5 | | | Out of Spec Wt | 12% | | |
| Carcass Conformation | 0.8 | | | Out of Spec Conf. | 2% | | |

- Early reports suggest exceptional calf quality.
- A massive +14.4 kgs of carcass weight, 2 times the breed average

Delightful

HW DELIGHTFUL V769

A.I. Code: AA7305

Breed: AA



| Dairy Beef Index | | €103 | Rel | 52% | ICBF, March '22 | | |
|----------------------|------|---------|---------|-------------------|-----------------|-------------|-------------|
| CALVING | | % Rel | Records | Heifers | 1st Calvers | 2nd Calvers | Mature Cows |
| Cow Calv. | 3.6% | 57% | 9 | | | | ★ |
| Calving Sub-Index | €25 | | | | | | |
| Gestation | | Records | Longer | Average | Short | Very Short | |
| Gest Len (Days) | -1.0 | 9 | | ★ | | | |
| Beef | | % Rel | Records | Below Average | Average | Good | Excellent |
| Beef Sub-Index | €78 | 47% | . | | | | ★ |
| Carcass Weight | 19.9 | | | Out of Spec Wt | 10% | | |
| Carcass Conformation | 0.7 | | | Out of Spec Conf. | 2% | | |

- High carcass weight over two times the breed average.
- Exciting sire stack that includes his sire Netherton Americano and his grand sire Neterallan Peter Pershore

Farghal

HW FARGHAL T516

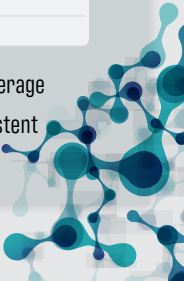
A.I. Code: AA4640

Breed: AA



| Dairy Beef Index | | €87 | Rel | 94% | ICBF, March '22 | | |
|----------------------|------|---------|---------|-------------------|-----------------|-------------|-------------|
| CALVING | | % Rel | Records | Heifers | 1st Calvers | 2nd Calvers | Mature Cows |
| Cow Calv. | 3.3% | 98% | 2042 | | | | ★ |
| Calving Sub-Index | €21 | | | | | | |
| Gestation | | Records | Longer | Average | Short | Very Short | |
| Gest Len (Days) | -0.6 | 2042 | | ★ | | | |
| Beef | | % Rel | Records | Below Average | Average | Good | Excellent |
| Beef Sub-Index | €66 | 90% | 416 | | | | ★ |
| Carcass Weight | 14.9 | | | Out of Spec Wt | 12% | | |
| Carcass Conformation | 0.9 | | | Out of Spec Conf. | 2% | | |

- Exceptional calf quality, Carcass Weight more than twice breed average
- One of the best bulls to use on 2nd calvers/cows to produce consistent quality calves



Maverick

INTELAGRI MAVERICK E.(T)ET

A.I. Code: AA4088

Breed: AA



Sire Photo



| Dairy Beef Index | | €108 | | Rel | 96% | ICBF, March '22 | |
|----------------------|------|---------|---------|-------------------|-------------|-----------------|-------------|
| CALVING | | % Rel | Records | Heifers | 1st Calvers | 2nd Calvers | Mature Cows |
| Cow Calv. | 2.9% | 99% | 8835 | ★ | | | |
| Calving Sub-Index | €49 | | | | | | |
| Gestation | | Records | Longer | Average | Short | Very Short | |
| Gest Len (Days) | -3.2 | 8835 | ★ | | | | |
| Beef | | % Rel | Records | Below Average | Average | Good | Excellent |
| Beef Sub-Index | €59 | 92% | 2523 | ★ | | | |
| Carcass Weight | 7.2 | | | Out of Spec Wt | 15% | | |
| Carcass Conformation | 0.7 | | | Out of Spec Conf. | 2% | | |

- 2nd most used AA sire 2021
- Fully proven short gestation Angus sire with +7.2 kgs carcass weight

Patriarch

COOLRAIN PATRIARCH

A.I. Code: AA5280

Breed: AA



| Dairy Beef Index | | €79 | | Rel | 88% | ICBF, March '22 | |
|----------------------|------|---------|---------|-------------------|-------------|-----------------|-------------|
| CALVING | | % Rel | Records | Heifers | 1st Calvers | 2nd Calvers | Mature Cows |
| Cow Calv. | 3.6% | 97% | 1223 | ★ | | | |
| Calving Sub-Index | €32 | | | | | | |
| Gestation | | Records | Longer | Average | Short | Very Short | |
| Gest Len (Days) | -2.0 | 1223 | ★ | | | | |
| Beef | | % Rel | Records | Below Average | Average | Good | Excellent |
| Beef Sub-Index | €46 | 79% | 56 | ★ | | | |
| Carcass Weight | 8.9 | | | Out of Spec Wt | 15% | | |
| Carcass Conformation | 0.7 | | | Out of Spec Conf. | 2% | | |

- Exceptionally short gestation easy calving sire
- Above breed average on carcass weight, fully proven

Master

ST ADDAIN L. MASTER

A.I. Code: AA2309

Breed: AA



| Dairy Beef Index | | €64 | | Rel | 96% | ICBF, March '22 | |
|----------------------|------|---------|---------|-------------------|-------------|-----------------|-------------|
| CALVING | | % Rel | Records | Heifers | 1st Calvers | 2nd Calvers | Mature Cows |
| Cow Calv. | 3.9% | 98% | 2636 | ★ | | | |
| Calving Sub-Index | €10 | | | | | | |
| Gestation | | Records | Longer | Average | Short | Very Short | |
| Gest Len (Days) | -0.2 | 2636 | ★ | | | | |
| Beef | | % Rel | Records | Below Average | Average | Good | Excellent |
| Beef Sub-Index | €54 | 93% | 1094 | ★ | | | |
| Carcass Weight | 12.3 | | | Out of Spec Wt | 13% | | |
| Carcass Conformation | 0.8 | | | Out of Spec Conf. | 2% | | |

- High levels of satisfaction with Master calves
- +11.8 Kgs of carcass weight, 1 and a half times the breed average
- Moderate for gestation length and calving ease

Eoghan

PROHURST EOGHAN W759



A.I. Code: AA7485

Breed: AA



| Dairy Beef Index | | €146 | | Rel | 52% | ICBF, March '22 | |
|----------------------|------|---------|---------|-------------------|-------------|-----------------|-------------|
| CALVING | | % Rel | Records | Heifers | 1st Calvers | 2nd Calvers | Mature Cows |
| Cow Calv. | 2.9% | 57% | 0 | ★ | | | |
| Calving Sub-Index | €51 | | | | | | |
| Gestation | | Records | Longer | Average | Short | Very Short | |
| Gest Len (Days) | -3 | 0 | ★ | | | | |
| Beef | | % Rel | Records | Below Average | Average | Good | Excellent |
| Beef Sub-Index | €95 | 47% | 0 | ★ | | | |
| Carcass Weight | 23.7 | | | Out of Spec Wt | 9% | | |
| Carcass Conformation | 0.9 | | | Out of Spec Conf. | 2% | | |

- No. 1 AA available on Dairy Beef Index (DBI)
- Paternal brother to Matteo & Maverick from full sister to RGZ Produced from our very own planned mating program

Matteo

INTELAGRI MATTEO E.T(ET)



A.I. Code: AA4089

Breed: AA



| Dairy Beef Index | | €111 | Rel | 97% | ICBF, March '22 | | |
|----------------------|------|---------|---------|-------------------|-----------------|-------------|-------------|
| CALVING | | % Rel | Records | Heifers | 1st Calvers | 2nd Calvers | Mature Cows |
| Cow Calv. | 2.5% | 99% | 10541 | ★ | | | |
| Calving Sub-Index | €62 | | | | | | |
| Gestation | | Records | Longer | Average | Short | Very Short | |
| Gest Len (Days) | -3.8 | 10541 | ★ | | | | |
| Beef | | % Rel | Records | Below Average | Average | Good | Excellent |
| Beef Sub-Index | €48 | 94% | 2215 | ★ | | | |
| Carcass Weight | 8.0 | | | Out of Spec Wt | 15% | | |
| Carcass Conformation | 0.7 | | | Out of Spec Conf. | 2% | | |

- Easy calving short gestation sire suitable for Dairy maidens
- Short Gestation
- Good Beef Merit

Jamie

SALLOWGLEN JAMIE T771



A.I. Code: AA4632

Breed: AA



| Dairy Beef Index | | €85 | Rel | 89% | ICBF, March '22 | | |
|----------------------|------|---------|---------|-------------------|-----------------|-------------|-------------|
| CALVING | | % Rel | Records | Heifers | 1st Calvers | 2nd Calvers | Mature Cows |
| Cow Calv. | 2.3% | 95% | 811 | ★ | | | |
| Calving Sub-Index | €53 | | | | | | |
| Gestation | | Records | Longer | Average | Short | Very Short | |
| Gest Len (Days) | -2.7 | 811 | ★ | | | | |
| Beef | | % Rel | Records | Below Average | Average | Good | Excellent |
| Beef Sub-Index | €32 | 84% | 164 | ★ | | | |
| Carcass Weight | 1.8 | | | Out of Spec Wt | 18% | | |
| Carcass Conformation | 0.7 | | | Out of Spec Conf. | 2% | | |

- Easy calving short gestation sire suitable for Dairy maidens,
- Moderate beef value sire
- Short Gestation

G Pat

GABRIEL PAT 1949



A.I. Code: AA4631

Breed: AA



| Dairy Beef Index | | €102 | Rel | 91% | ICBF, March '22 | | |
|----------------------|------|---------|---------|-------------------|-----------------|-------------|-------------|
| CALVING | | % Rel | Records | Heifers | 1st Calvers | 2nd Calvers | Mature Cows |
| Cow Calv. | 2.2% | 96% | 1232 | ★ | | | |
| Calving Sub-Index | €57 | | | | | | |
| Gestation | | Records | Longer | Average | Short | Very Short | |
| Gest Len (Days) | -2.7 | 1232 | ★ | | | | |
| Beef | | % Rel | Records | Below Average | Average | Good | Excellent |
| Beef Sub-Index | €45 | 85% | 181 | ★ | | | |
| Carcass Weight | 8.4 | | | Out of Spec Wt | 15% | | |
| Carcass Conformation | 0.6 | | | Out of Spec Conf. | 3% | | |

- Proven easy calver on dairy maidens, Short gestation sire
- Carcass Weight above breed average

Lamborghini

HW RED LAMBORGHINI V772



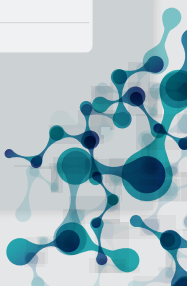
A.I. Code: AA7308

Breed: AA



| Dairy Beef Index | | €65 | Rel | 37% | ICBF, March '22 | | |
|----------------------|------|---------|---------|-------------------|-----------------|-------------|-------------|
| CALVING | | % Rel | Records | Heifers | 1st Calvers | 2nd Calvers | Mature Cows |
| Cow Calv. | 2.7% | 43% | 1 | ★ | | | |
| Calving Sub-Index | €27 | | | | | | |
| Gestation | | Records | Longer | Average | Short | Very Short | |
| Gest Len (Days) | 0.0 | 1 | ★ | | | | |
| Beef | | % Rel | Records | Below Average | Average | Good | Excellent |
| Beef Sub-Index | €37 | 33% | 0 | ★ | | | |
| Carcass Weight | 6.4 | | | Out of Spec Wt | 16% | | |
| Carcass Conformation | 0.4 | | | Out of Spec Conf. | 4% | | |

- Red Angus
- Bred for quality calves, proof pending



Terminus

TARA TERMINUS



A.I. Code: AA7500

Breed: AA



| Dairy Beef Index | | €98 | | Rel | 44% | ICBF, March '22 | |
|----------------------|------|-------------------|---------|---------------|-------------|-----------------|-------------|
| CALVING | | % Rel | Records | Heifers | 1st Calvers | 2nd Calvers | Mature Cows |
| Cow Calv. | 2.9% | 48% | 0 | ★ | | | |
| Calving Sub-Index | €40 | | | | | | |
| Gestation | | Records | Longer | Average | Short | Very Short | |
| Gest Len (Days) | -1.6 | 0 | ★ | | | | |
| Beef | | % Rel | Records | Below Average | Average | Good | Excellent |
| Beef Sub-Index | €58 | 41% | 0 | ★ | | | |
| Carcass Weight | 10.0 | Out of Spec Wt | | 14% | | | |
| Carcass Conformation | 0.9 | Out of Spec Conf. | | 2% | | | |

- An impressive young bull exhibiting power, shape, thickness, style and breed character
- Will add performance and shape to his progeny, Test sire

Tommie

TOWER TOMMIE



A.I. Code: AA7506

Breed: AA



| Dairy Beef Index | | €128 | | Rel | 53% | ICBF, March '22 | |
|----------------------|------|-------------------|---------|---------------|-------------|-----------------|-------------|
| CALVING | | % Rel | Records | Heifers | 1st Calvers | 2nd Calvers | Mature Cows |
| Cow Calv. | 2.7% | 59% | 0 | ★ | | | |
| Calving Sub-Index | €52 | | | | | | |
| Gestation | | Records | Longer | Average | Short | Very Short | |
| Gest Len (Days) | -2.9 | 0 | ★ | | | | |
| Beef | | % Rel | Records | Below Average | Average | Good | Excellent |
| Beef Sub-Index | €76 | 49% | 0 | ★ | | | |
| Carcass Weight | 16.1 | Out of Spec Wt | | 12% | | | |
| Carcass Conformation | 0.9 | Out of Spec Conf. | | 2% | | | |

- No. 2 AA available on Dairy Beef Index (DBI)
- Paternal brother to Matteo & Maverick

Roy

KNOTTOWN ROY

A.I. Code: SA4604

Breed: SA



| Dairy Beef Index | | €133 | | Rel | 88% | ICBF, March '22 | |
|----------------------|------|-------------------|---------|---------------|-------------|-----------------|-------------|
| CALVING | | % Rel | Records | Heifers | 1st Calvers | 2nd Calvers | Mature Cows |
| Cow Calv. | 2.9% | 86% | 224 | ★ | | | |
| Calving Sub-Index | €33 | | | | | | |
| Gestation | | Records | Longer | Average | Short | Very Short | |
| Gest Len (Days) | 0.1 | 224 | ★ | | | | |
| Beef | | % Rel | Records | Below Average | Average | Good | Excellent |
| Beef Sub-Index | €100 | 92% | 210 | ★ | | | |
| Carcass Weight | 21.8 | Out of Spec Wt | | 10% | | | |
| Carcass Conformation | 1.1 | Out of Spec Conf. | | 1% | | | |

- Extreme easy calving Salers sire.
- Excellent growth rates

Fuji

EDENBANE GLENISLA FUJISAWA

A.I. Code: WA2409

Breed: WA



| Dairy Beef Index | | €2 | | Rel | 81% | ICBF, March '22 | |
|----------------------|------|-------------------|---------|---------------|-------------|-----------------|-------------|
| CALVING | | % Rel | Records | Heifers | 1st Calvers | 2nd Calvers | Mature Cows |
| Cow Calv. | 2.1% | 88% | 325 | ★ | | | |
| Calving Sub-Index | €44 | | | | | | |
| Gestation | | Records | Longer | Average | Short | Very Short | |
| Gest Len (Days) | -0.4 | 325 | ★ | | | | |
| Beef | | % Rel | Records | Below Average | Average | Good | Excellent |
| Beef Sub-Index | -€43 | 75% | 30 | ★ | | | |
| Carcass Weight | -18 | Out of Spec Wt | | 30% | | | |
| Carcass Conformation | -0.1 | Out of Spec Conf. | | 7% | | | |

- Very Easy Calving Wagyu Sire

Profile PP

FISHER 1 PROFILE P456

A.I. Code: HE5346

Breed: HE



| Dairy Beef Index | | €70 | | Rel | 84% | ICBF, March '22 | |
|----------------------|------|---------|---------|-------------------|-------------|-----------------|-------------|
| CALVING | | % Rel | Records | Heifers | 1st Calvers | 2nd Calvers | Mature Cows |
| Cow Calv. | 3.9% | 97% | 1241 | | | | ★ |
| Calving Sub-Index | €18 | | | | | | |
| Gestation | | Records | Longer | Average | Short | Very Short | |
| Gest Len (Days) | -2.0 | 1241 | | | | | ★ |
| Beef | | % Rel | Records | Below Average | Average | Good | Excellent |
| Beef Sub-Index | €52 | 73% | 30 | | | | ★ |
| Carcass Weight | 4.9 | | | Out of Spec Wt | | 16% | |
| Carcass Conformation | 0.7 | | | Out of Spec Conf. | | 2% | |

- No. 1 proven HE available on Dairy Beef Index (DBI)
- No. 2 HE sire available on gestation length -2 days
- Most used Hereford sire used in the dairy herd in Ireland in 2021

Northern Star PP

FABB 1 NORTHERN STAR

A.I. Code: HE4297

Breed: HE



| Dairy Beef Index | | €66 | | Rel | 94% | ICBF, March '22 | |
|----------------------|------|---------|---------|-------------------|-------------|-----------------|-------------|
| CALVING | | % Rel | Records | Heifers | 1st Calvers | 2nd Calvers | Mature Cows |
| Cow Calv. | 3.7% | 99% | 8771 | | | | ★ |
| Calving Sub-Index | €27 | | | | | | |
| Gestation | | Records | Longer | Average | Short | Very Short | |
| Gest Len (Days) | -1.8 | 8771 | | | | | ★ |
| Beef | | % Rel | Records | Below Average | Average | Good | Excellent |
| Beef Sub-Index | €39 | 90% | 1417 | | | | ★ |
| Carcass Weight | -0.3 | | | Out of Spec Wt | | 19% | |
| Carcass Conformation | 0.6 | | | Out of Spec Conf. | | 3% | |

- Short gestation sire (-1.8d)
- Homozygous polled, easy calving on dairy cows

Spark PP

SOLPOLL 1 SPARK

A.I. Code: HE6361

Breed: HE



| Dairy Beef Index | | €66 | | Rel | 51% | ICBF, March '22 | |
|----------------------|------|---------|---------|-------------------|-------------|-----------------|-------------|
| CALVING | | % Rel | Records | Heifers | 1st Calvers | 2nd Calvers | Mature Cows |
| Cow Calv. | 3.2% | 72% | 56 | | | | ★ |
| Calving Sub-Index | €22 | | | | | | |
| Gestation | | Records | Longer | Average | Short | Very Short | |
| Gest Len (Days) | -0.1 | 56 | | | | | ★ |
| Beef | | % Rel | Records | Below Average | Average | Good | Excellent |
| Beef Sub-Index | €43 | 33% | 0 | | | | ★ |
| Carcass Weight | 5.8 | | | Out of Spec Wt | | 16% | |
| Carcass Conformation | 0.5 | | | Out of Spec Conf. | | 3% | |

- Exceptional carcass weight of +5.8 kgs
- -0.1 days for gestation and easy calving on dairy cows at 3.2%

Sonic PP

SOLPOLL 1 SONIC

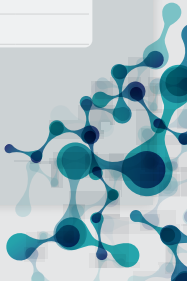
A.I. Code: HE6364

Breed: HE



| Dairy Beef Index | | €50 | | Rel | 56% | ICBF, March '22 | |
|----------------------|------|---------|---------|-------------------|-------------|-----------------|-------------|
| CALVING | | % Rel | Records | Heifers | 1st Calvers | 2nd Calvers | Mature Cows |
| Cow Calv. | 4.0% | 74% | 63 | | | | ★ |
| Calving Sub-Index | €9 | | | | | | |
| Gestation | | Records | Longer | Average | Short | Very Short | |
| Gest Len (Days) | -0.6 | 63 | | | | | ★ |
| Beef | | % Rel | Records | Below Average | Average | Good | Excellent |
| Beef Sub-Index | €41 | 41% | 0 | | | | ★ |
| Carcass Weight | 5.1 | | | Out of Spec Wt | | 16% | |
| Carcass Conformation | 0.6 | | | Out of Spec Conf. | | 3% | |

- Above breed average on carcass weight (+5.1gs)
- Easy calving on dairy cows at 4.0%



Rory 835

ALLOWDALE RORY 835

A.I. Code: HE5452

Breed: HE



| Dairy Beef Index | | €57 | Rel | 74% | ICBF, March '22 | | |
|----------------------|------|---------|---------|-------------------|-----------------|-------------|-------------|
| CALVING | | % Rel | Records | Heifers | 1st Calvers | 2nd Calvers | Mature Cows |
| Cow Calv. | 4.1% | 96% | 839 | | | | ★ |
| Calving Sub-Index | €21 | | | | | | |
| Gestation | | Records | Longer | Average | Short | Very Short | |
| Gest Len (Days) | -1.4 | 839 | | | | | ★ |
| Beef | | % Rel | Records | Below Average | Average | Good | Excellent |
| Beef Sub-Index | €36 | 55% | 0 | | | | ★ |
| Carcass Weight | 7.4 | | | Out of Spec Wt | | 15% | |
| Carcass Conformation | 0.7 | | | Out of Spec Conf. | | 2% | |

- High Carcass Weight (+7.4kgs)
- Short Gestation (-1.4d)
- Easy calving on cows 4.1%

President

MOORSIDE 1 PRESIDENT {HYF}

A.I. Code: HE4641

Breed: HE



| Dairy Beef Index | | €41 | Rel | 89% | ICBF, March '22 | | |
|----------------------|------|---------|---------|-------------------|-----------------|-------------|-------------|
| CALVING | | % Rel | Records | Heifers | 1st Calvers | 2nd Calvers | Mature Cows |
| Cow Calv. | 5.3% | 96% | 955 | | | | ★ |
| Calving Sub-Index | €1 | | | | | | |
| Gestation | | Records | Longer | Average | Short | Very Short | |
| Gest Len (Days) | -2.9 | 955 | | | | | ★ |
| Beef | | % Rel | Records | Below Average | Average | Good | Excellent |
| Beef Sub-Index | €40 | 84% | 214 | | | | ★ |
| Carcass Weight | 3.3 | | | Out of Spec Wt | | 17% | |
| Carcass Conformation | 0.5 | | | Out of Spec Conf. | | 3% | |

- A short gestation bull for mature cows
- Good beef merit

Ricochet PP

BARWISE 1 RICOCHET

A.I. Code: HE5455

Breed: HE



| Dairy Beef Index | | €57 | Rel | 68% | ICBF, March '22 | | |
|----------------------|------|---------|---------|-------------------|-----------------|-------------|-------------|
| CALVING | | % Rel | Records | Heifers | 1st Calvers | 2nd Calvers | Mature Cows |
| Cow Calv. | 3.0% | 92% | 441 | | | | ★ |
| Calving Sub-Index | €40 | | | | | | |
| Gestation | | Records | Longer | Average | Short | Very Short | |
| Gest Len (Days) | -2.2 | 441 | | | | | ★ |
| Beef | | % Rel | Records | Below Average | Average | Good | Excellent |
| Beef Sub-Index | €17 | 47% | 0 | | | | ★ |
| Carcass Weight | -4.0 | | | Out of Spec Wt | | 21% | |
| Carcass Conformation | 0.4 | | | Out of Spec Conf. | | 4% | |

- Shortest gestation HE sire available
- Easiest calving polled HE sire available

Zoro PP

GOULDINGPOLL 1 ZORO

A.I. Code: HE6841

Breed: HE



| Dairy Beef Index | | €94 | Rel | 54% | ICBF, March '22 | | |
|----------------------|------|---------|---------|-------------------|-----------------|-------------|-------------|
| CALVING | | % Rel | Records | Heifers | 1st Calvers | 2nd Calvers | Mature Cows |
| Cow Calv. | 2.9% | 70% | 41 | | | | ★ |
| Calving Sub-Index | €26 | | | | | | |
| Gestation | | Records | Longer | Average | Short | Very Short | |
| Gest Len (Days) | -0.5 | 41 | | | | | ★ |
| Beef | | % Rel | Records | Below Average | Average | Good | Excellent |
| Beef Sub-Index | €68 | 42% | 0 | | | | ★ |
| Carcass Weight | 14.5 | | | Out of Spec Wt | | 12% | |
| Carcass Conformation | 0.9 | | | Out of Spec Conf. | | 2% | |

- No. 1 HE sire available on Dairy Beef Index (DBI)
- No. 1 HE sire available on Beef Sub-Index
- Three times the breed average on Carcass Weight (14.5kgs)

Panda PP

MOORSIDE 1 PANDA {[HYF]}

A.I. Code: **HE4643**

Breed: HE



| Dairy Beef Index | | | | €41 | Rel | 93% | ICBF, March '22 | | |
|----------------------|--|--|--|---------|-------------------|---------------|-----------------|-------------|-------------|
| CALVING | | | | % Rel | Records | Heifers | 1st Calvers | 2nd Calvers | Mature Cows |
| Cow Calv. | | | | 4.1% | 99% | 4458 | ★ | | |
| Calving Sub-Index | | | | €9 | | | | | |
| Gestation | | | | Records | Longer | Average | Short | Very Short | |
| Gest Len (Days) | | | | -0.3 | 4458 | ★ | | | |
| Beef | | | | % Rel | Records | Below Average | Average | Good | Excellent |
| Beef Sub-Index | | | | €31 | 89% | 344 | ★ | | |
| Carcass Weight | | | | 3.1 | Out of Spec Wt | | 17% | | |
| Carcass Conformation | | | | 0.5 | Out of Spec Conf. | | 3% | | |

- Short Gestation with excellent quality calves
- PP = No Horns

Advance

ALLOWDALE ADVANCE 573 ET

A.I. Code: **HE4291**

Breed: HE



| Dairy Beef Index | | | | €40 | Rel | 95% | ICBF, March '22 | | |
|----------------------|--|--|--|---------|-------------------|---------------|-----------------|-------------|-------------|
| CALVING | | | | % Rel | Records | Heifers | 1st Calvers | 2nd Calvers | Mature Cows |
| Cow Calv. | | | | 4.2% | 99% | 5393 | ★ | | |
| Calving Sub-Index | | | | €3 | | | | | |
| Gestation | | | | Records | Longer | Average | Short | Very Short | |
| Gest Len (Days) | | | | -0.2 | 5393 | ★ | | | |
| Beef | | | | % Rel | Records | Below Average | Average | Good | Excellent |
| Beef Sub-Index | | | | €37 | 91% | 1117 | ★ | | |
| Carcass Weight | | | | 6.2 | Out of Spec Wt | | 16% | | |
| Carcass Conformation | | | | 0.5 | Out of Spec Conf. | | 3% | | |

- Horned Hereford with excellent beef merit
- Short gestation

Nomad

BARWISE 1 NOMAD

A.I. Code: **HE4645**

Breed:



| Dairy Beef Index | | | | €30 | Rel | 88% | ICBF, March '22 | | |
|----------------------|--|--|--|---------|-------------------|---------------|-----------------|-------------|-------------|
| CALVING | | | | % Rel | Records | Heifers | 1st Calvers | 2nd Calvers | Mature Cows |
| Cow Calv. | | | | 4.9% | 95% | 793 | ★ | | |
| Calving Sub-Index | | | | -€11 | | | | | |
| Gestation | | | | Records | Longer | Average | Short | Very Short | |
| Gest Len (Days) | | | | 0.3 | 793 | ★ | | | |
| Beef | | | | % Rel | Records | Below Average | Average | Good | Excellent |
| Beef Sub-Index | | | | €42 | 85% | 210 | ★ | | |
| Carcass Weight | | | | 7.6 | Out of Spec Wt | | 15% | | |
| Carcass Conformation | | | | 0.5 | Out of Spec Conf. | | 3% | | |

- Fully proven, Calving & Carcass
- Excellent beef value sire

Sainfoin

CARREG SAINFOIN

A.I. Code: **LH7470**

Breed: LH



| Dairy Beef Index | | | | -€9 | Rel | 29% | ICBF, March '22 | | |
|----------------------|--|--|--|---------|-------------------|---------------|-----------------|-------------|-------------|
| CALVING | | | | % Rel | Records | Heifers | 1st Calvers | 2nd Calvers | Mature Cows |
| Cow Calv. | | | | 3.1% | 29% | ★ | | | |
| Calving Sub-Index | | | | €21 | | | | | |
| Gestation | | | | Records | Longer | Average | Short | Very Short | |
| Gest Len (Days) | | | | 0.9 | ★ | | | | |
| Beef | | | | % Rel | Records | Below Average | Average | Good | Excellent |
| Beef Sub-Index | | | | -€30 | 30% | ★ | | | |
| Carcass Weight | | | | -13.2 | Out of Spec Wt | | 27% | | |
| Carcass Conformation | | | | 0.1 | Out of Spec Conf. | | 5% | | |

- Longhorn Sire
- Contact Buitelaar Calf Company about their Longhorn DairyBeef Scheme



Ondee

MOUNTAIN ONDEE

A.I. Code: **AU6685**

Breed: AU



| Dairy Beef Index | | €100 | Rel | 56% | ICBF, March '22 | | |
|----------------------|------|-------------------|----------------|----------------|-----------------|-------------|-------------|
| CALVING | | % Rel | Records | Heifers | 1st Calvers | 2nd Calvers | Mature Cows |
| Cow Calv. | 4.4% | 70% | 44 | [Progress bar] | | | ★ |
| Calving Sub-Index | €1 | | | | | | |
| Gestation | | Records | Longer | Average | Short | Very Short | |
| Gest Len (Days) | 0.3 | 44 | [Progress bar] | | | | ★ |
| Beef | | % Rel | Records | Below Average | Average | Good | Excellent |
| Beef Sub-Index | €99 | 45% | 0 | [Progress bar] | | | ★ |
| Carcass Weight | 14.4 | Out of Spec Wt | | 12% | | | |
| Carcass Conformation | 1.8 | Out of Spec Conf. | | 0% | | | |

- Easy calving for mature cows at 4.4% calving difficulty
- Moderate gestation, high beef value sire

Magnificent

TURLOUGHMORE MAGNIFICENT

A.I. Code: **AU4683**

Breed: AU



| Dairy Beef Index | | €124 | Rel | 91% | ICBF, March '22 | | |
|----------------------|------|-------------------|----------------|----------------|-----------------|-------------|-------------|
| CALVING | | % Rel | Records | Heifers | 1st Calvers | 2nd Calvers | Mature Cows |
| Cow Calv. | 3.7% | 98% | 1878 | [Progress bar] | | | ★ |
| Calving Sub-Index | €14 | | | | | | |
| Gestation | | Records | Longer | Average | Short | Very Short | |
| Gest Len (Days) | 0.3 | 1878 | [Progress bar] | | | | ★ |
| Beef | | % Rel | Records | Below Average | Average | Good | Excellent |
| Beef Sub-Index | €110 | 86% | 96 | [Progress bar] | | | ★ |
| Carcass Weight | 17.4 | Out of Spec Wt | | 11% | | | |
| Carcass Conformation | 1.7 | Out of Spec Conf. | | 0% | | | |

- Excellent Aubrac sire excelling for carcass weight
- Easy calving at 3.7% calving difficulty

Nelson

TURLOUGHMORE NELSON

A.I. Code: **AU6918**

Breed: AU



| Dairy Beef Index | | €124 | Rel | 48% | ICBF, March '22 | | |
|----------------------|------|-------------------|----------------|----------------|-----------------|-------------|-------------|
| CALVING | | % Rel | Records | Heifers | 1st Calvers | 2nd Calvers | Mature Cows |
| Cow Calv. | 4.4% | 53% | 13 | [Progress bar] | | | ★ |
| Calving Sub-Index | €3 | | | | | | |
| Gestation | | Records | Longer | Average | Short | Very Short | |
| Gest Len (Days) | 0.0 | 13 | [Progress bar] | | | | ★ |
| Beef | | % Rel | Records | Below Average | Average | Good | Excellent |
| Beef Sub-Index | €121 | 46% | . | [Progress bar] | | | ★ |
| Carcass Weight | 21.3 | Out of Spec Wt | | 10% | | | |
| Carcass Conformation | 2.1 | Out of Spec Conf. | | 0% | | | |

- Easy calving for cows at 4.4% calving difficulty
- Moderate gestation, high beef value sire

Henry

GARRENJAMES HENRY

A.I. Code: **SP7494**

Breed: SP



| Dairy Beef Index | | €24 | Rel | 45% | ICBF, March '22 | | |
|----------------------|------|-------------------|----------------|----------------|-----------------|-------------|-------------|
| CALVING | | % Rel | Records | Heifers | 1st Calvers | 2nd Calvers | Mature Cows |
| Cow Calv. | 3.1% | 50% | 0 | [Progress bar] | | | ★ |
| Calving Sub-Index | €22 | | | | | | |
| Gestation | | Records | Longer | Average | Short | Very Short | |
| Gest Len (Days) | -0.4 | 0 | [Progress bar] | | | | ★ |
| Beef | | % Rel | Records | Below Average | Average | Good | Excellent |
| Beef Sub-Index | €2 | 41% | 0 | [Progress bar] | | | ★ |
| Carcass Weight | -6.8 | Out of Spec Wt | | 23% | | | |
| Carcass Conformation | 0.9 | Out of Spec Conf. | | 2% | | | |

- Double NT821 Myostatin carrier
- Well coloured Speckle Park Sire

Koreas P

KOREAS P

A.I. Code: **BBX101**

Breed: BB



| Dairy Beef Index | | €75 | Rel | 39% | ICBF, March '22 | | |
|----------------------|------|---------|---------|-------------------|-----------------|-------------|-------------|
| CALVING | | % Rel | Records | Heifers | 1st Calvers | 2nd Calvers | Mature Cows |
| Cow Calv. | 7.1% | 51% | 18 | | | | ★ |
| Calving Sub-Index | -€44 | | | | | | |
| Gestation | | Records | Longer | Average | Short | Very Short | |
| Gest Len (Days) | 1.0 | 18 | | ★ | | | |
| Beef | | % Rel | Records | Below Average | Average | Good | Excellent |
| Beef Sub-Index | €119 | 32% | 0 | | | | ★ |
| Carcass Weight | 21.5 | | | Out of Spec Wt | | 10% | |
| Carcass Conformation | 1.8 | | | Out of Spec Conf. | | 0% | |

- Early indications suggest Koreas will be easy calved at 7.1%
- Calves are born on time
- Heterozygous polled sire

Luddite

BAMS LUDDITE

A.I. Code: **BB6193**

Breed: BB



| Dairy Beef Index | | €99 | Rel | 48% | ICBF, March '22 | | |
|----------------------|-------|---------|---------|-------------------|-----------------|-------------|-------------|
| CALVING | | % Rel | Records | Heifers | 1st Calvers | 2nd Calvers | Mature Cows |
| Cow Calv. | 7.20% | 57% | 16 | | | | ★ |
| Calving Sub-Index | -€21 | | | | | | |
| Gestation | | Records | Longer | Average | Short | Very Short | |
| Gest Len (Days) | -1.2 | 16 | | ★ | | | |
| Beef | | % Rel | Records | Below Average | Average | Good | Excellent |
| Beef Sub-Index | €119 | 41% | 0 | | | | ★ |
| Carcass Weight | 20.2 | | | Out of Spec Wt | | 10% | |
| Carcass Conformation | 2.1 | | | Out of Spec Conf. | | 0% | |

| UK Calv Ease* *Genus UK | UK Gest* *Genus UK | UK Calf Quality* *Genus UK | UK Calves* *Genus UK |
|----------------------------|-----------------------|-------------------------------|-------------------------|
| 118 | 124 | 106 | 252 |

- Easy calving, short gestation with exceptional satisfaction from first calves

Marius

MARIUS DES PRINCES DE LIGNE

A.I. Code: **BB5226**

Breed: BB



| Dairy Beef Index | | €89 | Rel | 74% | ICBF, March '22 | | |
|----------------------|------|---------|---------|-------------------|-----------------|-------------|-------------|
| CALVING | | % Rel | Records | Heifers | 1st Calvers | 2nd Calvers | Mature Cows |
| Cow Calv. | 8.3% | 92% | 466 | | | | ★ |
| Calving Sub-Index | -€61 | | | | | | |
| Gestation | | Records | Longer | Average | Short | Very Short | |
| Gest Len (Days) | -1.3 | 466 | | ★ | | | |
| Beef | | % Rel | Records | Below Average | Average | Good | Excellent |
| Beef Sub-Index | €150 | 60% | 8 | | | | ★ |
| Carcass Weight | 27.4 | | | Out of Spec Wt | | 8% | |
| Carcass Conformation | 2.9 | | | Out of Spec Conf. | | 0% | |

- Super quality sire and Replacement for DBZ
- 8.3% calving difficulty on Dairy cows with over 400 records
- Calves are born on average at 283 days

Moneyman

QUARRY BANK MONEYMAN

A.I. Code: **BB7221**

Breed: BB



| Dairy Beef Index | | €64 | Rel | 45% | ICBF, March '22 | | |
|----------------------|-------|---------|---------|-------------------|-----------------|-------------|-------------|
| CALVING | | % Rel | Records | Heifers | 1st Calvers | 2nd Calvers | Mature Cows |
| Cow Calv. | 7.30% | 52% | 8 | | | | ★ |
| Calving Sub-Index | -€47 | | | | | | |
| Gestation | | Records | Longer | Average | Short | Very Short | |
| Gest Len (Days) | 1.2 | 8 | | ★ | | | |
| Beef | | % Rel | Records | Below Average | Average | Good | Excellent |
| Beef Sub-Index | €111 | 41% | 0 | | | | ★ |
| Carcass Weight | 19.1 | | | Out of Spec Wt | | 10% | |
| Carcass Conformation | 1.9 | | | Out of Spec Conf. | | 0% | |

| UK Calv Ease* *Genus UK | UK Gest* *Genus UK | UK Calf Quality* *Genus UK | UK Calves* *Genus UK |
|----------------------------|-----------------------|-------------------------------|-------------------------|
| 130 | 130 | 112 | 259 |

- Exceptionally easy calving, short gestation British sire based on the UK data



Logic

MOORSLEY LOGIC

A.I. Code: **BB6199**

Breed: BB



| Dairy Beef Index | | €70 | Rel | 66% | ICBF, March '22 | | |
|----------------------|------|---------|---------|-------------------|-----------------|-------------|-------------|
| CALVING | | % Rel | Records | Heifers | 1st Calvers | 2nd Calvers | Mature Cows |
| Cow Calv. | 6.1% | 88% | 274 | | | | ★ |
| Calving Sub-Index | -€2 | | | | | | |
| Gestation | | Records | Longer | Average | Short | Very Short | |
| Gest Len (Days) | -1.4 | 274 | | | | | ★ |
| Beef | | % Rel | Records | Below Average | Average | Good | Excellent |
| Beef Sub-Index | €71 | 47% | 0 | | | | ★ |
| Carcass Weight | 6.2 | | | Out of Spec Wt | | 16% | |
| Carcass Conformation | 1.8 | | | Out of Spec Conf. | | 0% | |

| UK Calv Ease* *Genus UK | UK Gest* *Genus UK | UK Calf Quality* *Genus UK | UK Calves* *Genus UK |
|----------------------------|-----------------------|-------------------------------|-------------------------|
| 130 | 108 | 98 | 83 |

▪ Extremely easy calving British Blue sire. Use with confidence on 2nd calvers plus

Hybride

BBG HYBRIDE 001 DE BOULOGNE



A.I. Code: **BB7272**

Breed: BB



| Dairy Beef Index | | €23 | Rel | 34% | ICBF, March '22 | | |
|----------------------|-------|---------|---------|-------------------|-----------------|-------------|-------------|
| CALVING | | % Rel | Records | Heifers | 1st Calvers | 2nd Calvers | Mature Cows |
| Cow Calv. | 9.4% | 39% | 1 | | | | ★ |
| Calving Sub-Index | -€106 | | | | | | |
| Gestation | | Records | Longer | Average | Short | Very Short | |
| Gest Len (Days) | -0.5 | 1 | | | | | ★ |
| Beef | | % Rel | Records | Below Average | Average | Good | Excellent |
| Beef Sub-Index | €129 | 31% | 0 | | | | ★ |
| Carcass Weight | 22.1 | | | Out of Spec Wt | | 9% | |
| Carcass Conformation | 2.4 | | | Out of Spec Conf. | | 0% | |

- Proof Pending
- Early calving data very positive

Oxo

VILLABLUES OXO ET



A.I. Code: **BB8283**

Breed:



Full Brother

| Dairy Beef Index | | €37 | Rel | 44% | ICBF, March '22 | | |
|----------------------|-------|---------|---------|-------------------|-----------------|-------------|-------------|
| CALVING | | % Rel | Records | Heifers | 1st Calvers | 2nd Calvers | Mature Cows |
| Cow Calv. | 9.6% | 46% | .0 | | | | ★ |
| Calving Sub-Index | -€119 | | | | | | |
| Gestation | | Records | Longer | Average | Short | Very Short | |
| Gest Len (Days) | 1.9 | 0 | | | | | ★ |
| Beef | | % Rel | Records | Below Average | Average | Good | Excellent |
| Beef Sub-Index | €157 | 43% | 0 | | | | ★ |
| Carcass Weight | 30.8 | | | Out of Spec Wt | | 7% | |
| Carcass Conformation | 2.7 | | | Out of Spec Conf. | | 0% | |

- Test Sire
- Full brother to Villablues Nixon

ELK

BBG ELK 236 DE BOULOGNE



A.I. Code: **BB7278**

Breed: BB



| Dairy Beef Index | | €48 | Rel | 36% | ICBF, March '22 | | |
|----------------------|------|---------|---------|-------------------|-----------------|-------------|-------------|
| CALVING | | % Rel | Records | Heifers | 1st Calvers | 2nd Calvers | Mature Cows |
| Cow Calv. | 8.3% | 42% | 7 | | | | ★ |
| Calving Sub-Index | -€66 | | | | | | |
| Gestation | | Records | Longer | Average | Short | Very Short | |
| Gest Len (Days) | -1.4 | 7 | | | | | ★ |
| Beef | | % Rel | Records | Below Average | Average | Good | Excellent |
| Beef Sub-Index | €114 | 31% | 0 | | | | ★ |
| Carcass Weight | 19.4 | | | Out of Spec Wt | | 10% | |
| Carcass Conformation | 2.0 | | | Out of Spec Conf. | | 0% | |

- Proof Pending
- Early calving data very positive

Northpole

FOREST NORTHPOLE

A.I. Code: -

Breed: BB



Sire Photo

| UK Calv Ease* *Denus UK | UK Gest* *Denus UK | UK Calf Quality* *Denus UK | UK Calves* *Denus UK |
|----------------------------|-----------------------|-------------------------------|-------------------------|
| 130 | 130 | 128 | 234 |

- One of the most exciting British Blue sire we have sourced from ABS.
- Northpole excels on gestation, calf quality, calving ease and survivability
- Figures based on Nuera profit index (UK)
- Irish Proof not yet available

Nightrider

NUERA NIGHTRIDER

A.I. Code: -

Breed: BB



Sire Photo

| UK Calv Ease* *Denus UK | UK Gest* *Denus UK | UK Calf Quality* *Denus UK | UK Calves* *Denus UK |
|----------------------------|-----------------------|-------------------------------|-------------------------|
| 126 | 108 | 130 | 176 |

- Easy calving British Blue sire that excels on calf quality and calving ease on the UK Nuera profit index.
- Semen sourced from the ABS breeding program
- Excellent calf quality combined with good calving ease
- Irish Proof not yet available

Joujou

JOUJOU

A.I. Code: CH6259

Breed: CH



| Dairy Beef Index | | €105 | Rel | 43% | ICBF, March '22 | | |
|----------------------|------|-------------------|------------|---------------|-----------------|-------------|-------------|
| CALVING | | % Rel | Records | Heifers | 1st Calvers | 2nd Calvers | Mature Cows |
| Cow Calv. | 5.9% | 42% | 10 | ██████████ | | | ★ |
| Calving Sub-Index | -€30 | | | | | | |
| Gestation | | Records | Longer | Average | Short | Very Short | |
| Gest Len (Days) | 0.3 | 10 | ██████████ | | | | ★ |
| Beef | | % Rel | Records | Below Average | Average | Good | Excellent |
| Beef Sub-Index | €135 | 44% | 0 | ██████████ | | | ★ |
| Carcass Weight | 28.3 | Out of Spec Wt | | 8% | | | |
| Carcass Conformation | 2.2 | Out of Spec Conf. | | 0% | | | |

- High beef value CH sire, easy calving at 5.9% calving difficulty
- Extreme short gestation for breed

Lapon

LAPON

A.I. Code: CH4321

Breed: CH



| Dairy Beef Index | | €92 | Rel | 88% | ICBF, March '22 | | |
|----------------------|------|-------------------|------------|---------------|-----------------|-------------|-------------|
| CALVING | | % Rel | Records | Heifers | 1st Calvers | 2nd Calvers | Mature Cows |
| Cow Calv. | 7.2% | 88% | 303 | ██████████ | | | ★ |
| Calving Sub-Index | -€59 | | | | | | |
| Gestation | | Records | Longer | Average | Short | Very Short | |
| Gest Len (Days) | 2.3 | 303 | ██████████ | | | | ★ |
| Beef | | % Rel | Records | Below Average | Average | Good | Excellent |
| Beef Sub-Index | €151 | 91% | 328 | ██████████ | | | ★ |
| Carcass Weight | 40.7 | Out of Spec Wt | | 5% | | | |
| Carcass Conformation | 2.2 | Out of Spec Conf. | | 0% | | | |

- Outstandingly well balanced CH sire for the dairy herd
- +40.7 kgs carcass weight alongside a calving difficulty of 7.2%, Non myostatin carrier



Proper

POWERFUL PROPER



A.I. Code: LM7416

Breed: LM



| Dairy Beef Index | | €110 | Rel | 51% | ICBF, March '22 | | |
|----------------------|------|---------|---------|-------------------|-----------------|-------------|-------------|
| CALVING | | % Rel | Records | Heifers | 1st Calvers | 2nd Calvers | Mature Cows |
| Cow Calv. | 5.8% | 51% | . | | | | ★ |
| Calving Sub-Index | -€26 | | | | | | |
| Gestation | | Records | Longer | Average | Short | Very Short | |
| Gest Len (Days) | 2.5 | . | | | | | ★ |
| Beef | | % Rel | Records | Below Average | Average | Good | Excellent |
| Beef Sub-Index | €136 | 52% | . | | | | ★ |
| Carcass Weight | 25.1 | | | Out of Spec Wt | | 8% | |
| Carcass Conformation | 2.2 | | | Out of Spec Conf. | | 0% | |

- Exciting new sire bred for calving ease and short gestation
- Extremely docile sire, high beef value
- Proof due shortly

Knell

MOONDHARRIG KNELL

A.I. Code: LM4217

Breed: LM



| Dairy Beef Index | | €100 | Rel | 95% | ICBF, March '22 | | |
|----------------------|------|---------|---------|-------------------|-----------------|-------------|-------------|
| CALVING | | % Rel | Records | Heifers | 1st Calvers | 2nd Calvers | Mature Cows |
| Cow Calv. | 5.1% | 98% | 2461 | | | | ★ |
| Calving Sub-Index | -€27 | | | | | | |
| Gestation | | Records | Longer | Average | Short | Very Short | |
| Gest Len (Days) | 2.9 | 2461 | | | | | ★ |
| Beef | | % Rel | Records | Below Average | Average | Good | Excellent |
| Beef Sub-Index | €127 | 94% | 2151 | | | | ★ |
| Carcass Weight | 20.4 | | | Out of Spec Wt | | 10% | |
| Carcass Conformation | 2.0 | | | Out of Spec Conf. | | 0% | |

- Just 5.1% calving difficulty on dairy cows with exceptionally high reliability at 98%
- High beef value sire

Gucci

LIS-NA-RI GUCCI

A.I. Code: SI4250

Breed: SI



| Dairy Beef Index | | €48 | Rel | 87% | ICBF, March '22 | | |
|----------------------|------|---------|---------|-------------------|-----------------|-------------|-------------|
| CALVING | | % Rel | Records | Heifers | 1st Calvers | 2nd Calvers | Mature Cows |
| Cow Calv. | 5.7% | 86% | 226 | | | | ★ |
| Calving Sub-Index | -€26 | | | | | | |
| Gestation | | Records | Longer | Average | Short | Very Short | |
| Gest Len (Days) | 2.2 | 226 | | | | | ★ |
| Beef | | % Rel | Records | Below Average | Average | Good | Excellent |
| Beef Sub-Index | €74 | 91% | 237 | | | | ★ |
| Carcass Weight | 18.5 | | | Out of Spec Wt | | 11% | |
| Carcass Conformation | 1.6 | | | Out of Spec Conf. | | 1% | |

- Easy calving at 5.6% calving difficulty with high reliability
- Exceptional carcass weight of +18.5kgs

Lynx

LEEHERD LYNX 364



A.I. Code: SI7491

Breed: SI



| Dairy Beef Index | | €68 | Rel | 46% | ICBF, March '22 | | |
|----------------------|------|---------|---------|-------------------|-----------------|-------------|-------------|
| CALVING | | % Rel | Records | Heifers | 1st Calvers | 2nd Calvers | Mature Cows |
| Cow Calv. | 6.5% | 43% | . | | | | ★ |
| Calving Sub-Index | -€42 | | | | | | |
| Gestation | | Records | Longer | Average | Short | Very Short | |
| Gest Len (Days) | 1.1 | . | | | | | ★ |
| Beef | | % Rel | Records | Below Average | Average | Good | Excellent |
| Beef Sub-Index | €109 | 48% | . | | | | ★ |
| Carcass Weight | 32.1 | | | Out of Spec Wt | | 7% | |
| Carcass Conformation | 1.7 | | | Out of Spec Conf. | | 0% | |

- Exciting new test sire with an exceptionally easy calving sire stack
- +32 kgs of carcass weight and only 6.5% calving difficulty on Dairy cows
- Use on mature cows only

| Farm Reports | | AgriNet HerdApp | | |
|--------------|---|-----------------|-----------|----------|
| Home | Settings | Sync | Menu | |
| Jobs | Stock | Calving | Fertility | Problems |
| Num | Jobs | Settings | Cur | |
| 0 | Calves to register/get card | | | |
| 0 | Freshly Calved Cows (in last 7 days) | ⚙️ | | |
| 24 | Due to calve (in the next 7 days) | ⚙️ | | |
| 19 | Due to dry (in the next 60 days) | ⚙️ | | |
| 182 | Cows due serve (35 days after last calve) | ⚙️ | ★ | |
| 131 | Heifers due serve (365 days after birth) | ⚙️ | ★ | |
| 0 | Due to repeat (18 to 24 day cycle) | ⚙️ | ★ | |
| 163 | Cows not seen in heat (42 days calved) | ⚙️ | ★ | |
| 100 | Heifers not seen in heat (450 days born) | ⚙️ | ★ | |
| 115 | Due a pregnancy test (30 days served) | ⚙️ | ★ | |



Manage your farm efficiently

Links directly to agfood and ICBF and is designed to manage all the key day to day functions on a typical Irish farm.

WE'RE HERE TO HELP.

Unlimited training is available as you proceed, step by step, at your own pace.
email: herdapp@agrinet.ie
call: 046-9245118 or 046-9249964



PART OF YOUR FARM

Download our app now



Call 046 924 9964 for queries and support

Scan QR Code for details



Check out the Progressive Genetics DairyBeef Plus Calf Project

- Matching breeders with calf buyers
- Building farmer-to-farmer relationships
- Building a sustainable outlet for your quality calves
- For Herds breeding top quality calves from B&W Cows
- 2022 target is €35 Beef Value in DairyBeef Index (DBI)

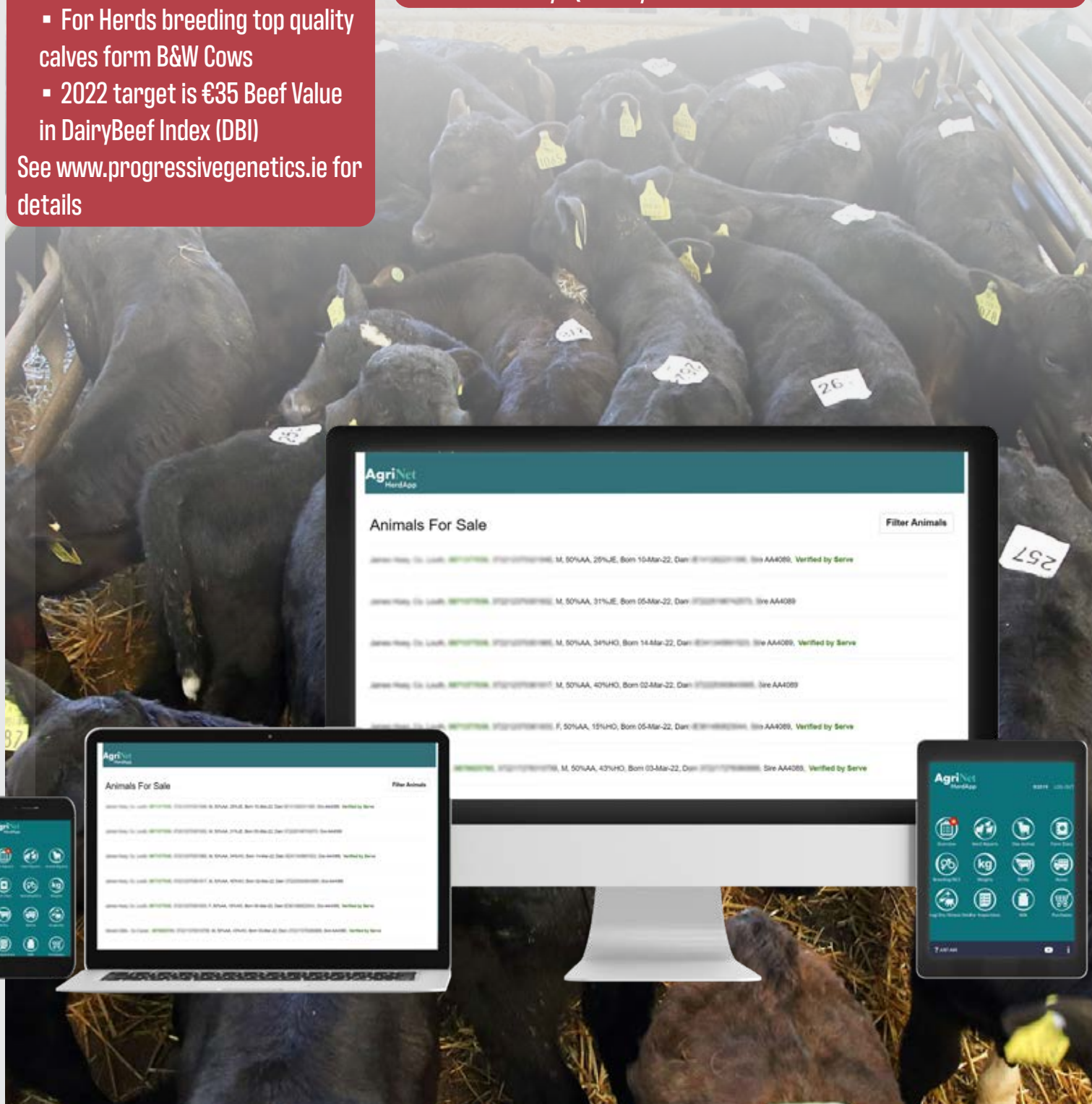
See www.progressivegenetics.ie for details

AgriNet HerdApp Sales Ring

- Matching breeders with calf buyers
- Export all your calves for sale directly from HerdApp
- Full listing of calves for sale on website
- Details of Date of Birth, Sire, Dam, Breed
- Commercial Beef Value Index coming soon
- Get the data to buy with confidence

See www.progressivegenetics.ie for details & calf listing

Buy Quality Genetics with Confidence





Breeding Advisor & Semen Sales



Gerard McCool
087 - 2057588
Donegal



John Griffith
086 - 8431624
Sligo, Mayo,
Roscommon



Deirdre Toal
087 - 2599314
Monaghan, Longford,
Cavan, Leitrim



John McDaniel
087 - 2360318
Louth & Inniskeen Area



Michael Quinn
086 - 3892908
Meath, North Dublin



Leo Davis
086 - 8197114
Kells Area & Westmeath
East



Violet Nevin
087 - 6253395
Westmeath, North
Offaly



Trevor Hanly
087 - 2272446
087 - 9148922
Carlow, Wicklow, Kildare,
E Laois, Nth Wexford



Sean Hayes
087 - 2757835
Tipperary, West Laois,
South Offaly



Denis Dalton
087 - 6785875
Kilkenny



Ger Power
086 - 2158505
Kilkenny



John Fogarty
087 - 6752401
Part of Tipperary &
Kilkenny



Eugene Kehoe
087 - 6842846
South Wexford



David Phelan
086 - 8959558
East Waterford



Seamus Hughes
087 - 2331235
Sales Manager



Shane Leane
086 - 7514121
Technical Sales
Manager



Martin Regan
086 - 8216253
Beef Specialist, West of
Ireland

Milk Recording Contacts

Milk Recording Supervisor
Louise Knight 087-2505723
Kevin O Neill 086-1030396
Milk Recording Office
Tel: 046-9540606

