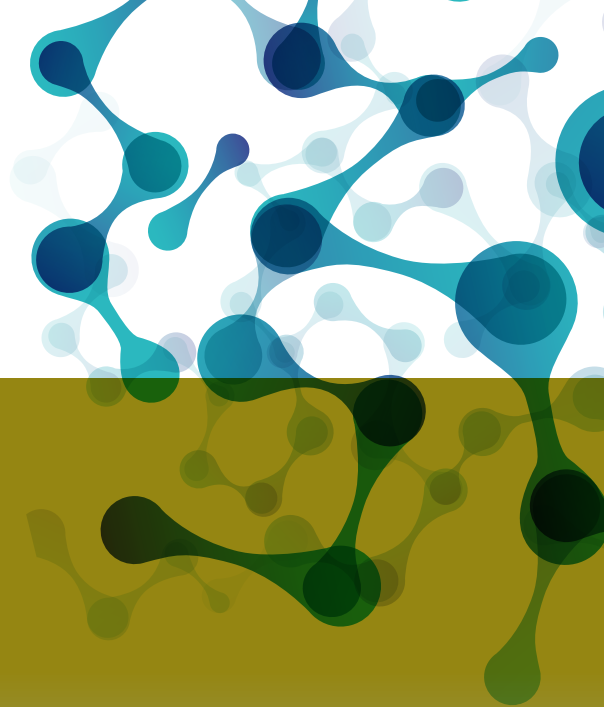


January  
**2022**



G1 DAIRY SIREs



PROGRESSIVE  
  
GENETICS



# WE GIVE YOU A COMPETITIVE ADVANTAGE AND A MORE PROFITABLE FUTURE.

Progressive Genetics are delighted to introduce you to our special catalogue of G1 sires for the Spring 2022 season. Over the past 12 months Progressive Genetics in association with our partners in the National Cattle Breeding Centre (NCBC) have selected over 70 high ranking genomically selected young bulls.

These bulls are at the very early stage of their production cycle but a limited number of doses will be available this season.

The Dairy breeding programme at NCBC is making an enormous contribution to cattle breeding in Ireland being the corner stone in powering the EBI

since its embryonic beginnings in 2000 and over the last 10 years (2010 to 2019) the national herd has demonstrated a significant improvement in performance as outlined in **table 1 & 2 below**. The advantage of using G1 bulls is shown in **table 3**.

The gains that farmers are achieving are reflected in the milk cheque with gains in fat and protein of 60kg over the past 10 years alone.

The G1 sires in this catalogue come from a broad range of families and sires and are reflective of our programmes policy to promote as broad a genetic diversity as possible.

Just a **note of caution** these G1 bulls are only starting to be used in the field so we do not have any field fertility data, field calving ability data or genetic defect data available at this time so they come with that health warning. Although these bulls represent the future and they have been selected using the best data available but this may change therefore you should **always use a team of bulls** in your herd.

We hope you find some sires of interest in the catalogue and we look forward to a successful AI season in 2022.

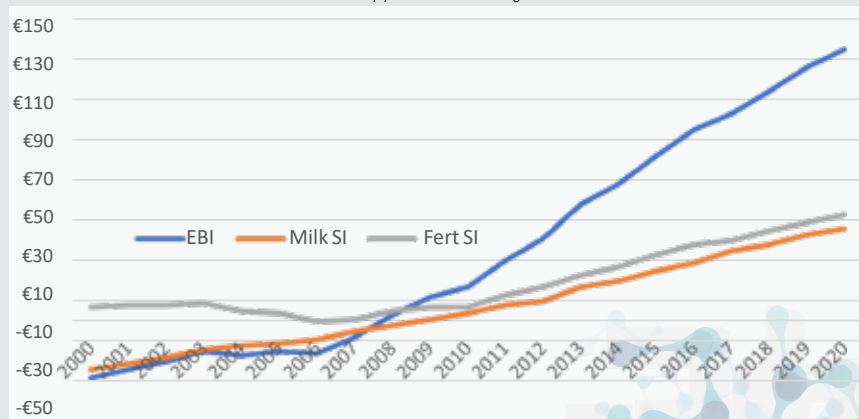
**Table 1:** Change in the performance of the national dairy herd (2020-2019) Source ICBF 2021

Year	Milk l/cow	Fat%	Protein%	F+P kg/cow	6-week calving rate%
2010	4,966	3.85%	3.37%	359	52%
2019	5,446	4.17%	3.53%	419	65%

**Table 2** Analysis based on 6190 herds that had >=30 AI bred cows and >=5 AI bred replacements this year (i.e., born in 2018 and calves in 2020) Source ICBF 2021

% progeny by G1 Sires	Herds	Cows	% by G1 Sires	EBI 2018 Heifers
- Greater 20%	487	140	29%	€164.60
- 10 to 19%	893	142.8	14%	€151.50
- 5 to 9%	1113	131.5	7%	€145.70
- 1 to 5%	1850	121.5	2%	€140.20
- Zero %	1847	98.6	0%	€133.70
Overall	6190	121	6%	€142.80

**Table 3:** Genetic Trend in EBI by year of first calving Source ICBF 2021



## OUR SEMEN QUALITY STANDARDS

Bull Category	All Bulls	Main Catalogue	Preg+	Sexed
Lab Quality Control Passed	✓	✓	✓	✓
Field Fertility Data Average or above		✓	✓	✓
Top 10% for pregnancy rates & 2000+ Serves recorded			✓	

Progressive Genetics are committed to excellent semen quality and good on-farm fertility results. Progressive Genetics will not be held responsible for the actual fertility achieved from the use of its products.

The G1 bulls supplied by Progressive Genetics have no field fertility data available yet and should be used with caution. They should be used in small quantities as part of a large team of bulls. Please refer to our website for full terms and conditions <https://www.progressivegenetics.ie/terms-conditions/>

# PROGRESS FASTER WITH G1 SIREs



**NOTE NO FIELD FERTILITY DATA AVAILABLE FOR THESE SIREs**



## Progressive Genetics Active High EBI G1 Sires Bulls January 2022

Bull Details				EBI & Sub-Indexes						Production					Calv		Pedigree			
CODE	Name	Page	Proof	EBI	Rel	Prod	Fert	Health	Maint	Milk	Fat	Prot	F+P	Fat	Prot	Calv	Gest	Ped	Type	Sire
FR7866	Starwar	2	G1	€382	54	108	180	17	23	240	19.1	15.4	34	+0.16	+0.12	4.5	-4.1	SRM	-1.5	Pivotal
FR7869	Kingman	2	G1	€378	54	110	191	16	16	-10	22.1	10.6	33	+0.39	+0.19	4.3	-4.9	PED	-1.6	Pivotal
FR7863	Superdry	3	G1	€377	58	86	208	29	11	38	16.5	9.4	26	+0.26	+0.14	5.5	-4.2	PED	-0.9	Supreme
	Redsky Red	3	G1	€357	54	98	170	21	12	168	14.0	14.0	28	+0.13	+0.15	4.3	-4.9	SRM	-0.8	Pivotal
FR8010	Argile	4	G1	€356	55	113	182	5	12	-156	15.0	11.0	26	+0.39	+0.30	3.6	-4.5	SRM	-0.9	Seville
	Rooster	4	G1	€356	56	104	181	11	4	127	16.5	13.8	30	+0.20	+0.16	4.0	-5.2	PED	-1.0	Seville
FR7932	Newton	5	G1	€355	56	100	198	10	27	-60	13.9	11.2	25	+0.29	+0.23	5.1	-3.4	SRM	-1.5	Andrew
FR7904	Blandford	5	G1	€354	51	113	172	16	15	75	17.1	14.3	31	+0.24	+0.20	6.6	-4.9	PED	-0.7	Pivotal
FR7887	Aspenaro	6	G1	€352	57	86	201	9	4	110	10.2	12.7	23	+0.10	+0.15	4.8	-5.1	PED	-0.5	Seville
	Pragon	6	G1	€351	52	89	186	13	23	172	16.4	11.9	28	+0.16	+0.10	4.8	-5.2	SRM	-0.9	Pivotal
	Finneas	7	G1	€351	54	94	170	21	15	-110	15.1	9.0	24	+0.35	+0.23	3.9	-4.6	SRM	-1.3	Sexton
FR7938	Sherjah	7	G1	€350	53	91	171	19	25	-23	14.1	10.1	24	+0.26	+0.19	4.2	-4.0	SRM	-0.2	Arco
FR8016	Ornate	8	G1	€347	56	111	180	13	2	-123	19.0	10.0	29	+0.42	+0.26	4.6	-3.1	SRM	-1.5	Seville
	Jerico	8	G1	€346	54	117	151	13	27	187	23.9	14.3	38	+0.28	+0.13	4.6	-3.8	SRM	-1.1	Pivotal
	Exude	9	G1	€344	54	118	170	12	6	154	17.7	16.3	34	+0.20	+0.19	4.2	-4.0	SRM	-0.7	Bond
	Swoop	9	G1	€343	59	103	179	7	9	106	15.1	13.9	29	+0.19	+0.18	5.0	-4.0	PED	-1.3	Harold
FR8046	Yogi	10	G1	€341	55	100	161	10	19	16	13.0	13.0	26	+0.21	+0.21	4.0	-5.3	SRM	-1.5	Seville
FR7995	Boum	10	G1	€340	53	109	173	12	7	53	19.7	12.4	32	+0.31	+0.18	7.2	-4.3	PED	-1.4	Pivotal
	Frodon	11	G1	€335	53	115	169	25	9	-5	17.7	13.3	31	+0.31	+0.23	5.4	-3.7	PED	-0.2	Virginia
	Lexy	11	G1	€334	55	118	141	10	8	-5	17.7	13.7	31	+0.31	+0.24	5.6	-5.3	PED	-1.9	Seville
FR7913	Domino	12	G1	€333	56	97	170	10	4	51	11.1	13.3	24	+0.16	+0.20	3.7	-5.2	PED	-1.1	Seville
FR7671	Redadam Red	12	G1	€333	50	112	156	25	18	48	21.1	12.3	33	+0.33	+0.19	5.1	-2.3	SRM	-1.0	Ronald
FR7907	Ballintosig	13	G1	€332	59	88	169	11	7	111	17.7	10.4	28	+0.23	+0.11	3.6	-4.9	PED	-0.4	Ring
FR7881	Siamsa	13	G1	€330	56	130	150	7	9	26	18.0	16.1	34	+0.29	+0.26	4.4	-4.8	PED	-0.9	Seville
	Rummy	14	G1	€328	57	89	164	10	10	-58	13.5	9.5	23	+0.28	+0.20	4.2	-4.6	PED	-1.4	Seville
FR7875	Kemboy	14	G1	€326	53	101	136	23	21	20	17.6	11.2	29	+0.29	+0.18	5.2	-5.3	SRM	-0.6	Pivotal
FR7929	Teak	15	G1	€323	60	109	131	20	7	235	20.6	14.9	35	+0.19	+0.12	4.2	-4.1	PED	-0.3	Ring
FR7968	De Gea	15	G1	€322	54	95	146	21	-5	218	18.1	13.1	31	+0.16	+0.10	4.5	-4.1	PED	-0.4	Mo Salah
	Milton	16	G1	€322	53	108	164	13	18	27	18.0	12.0	30	+0.30	+0.20	4.8	-3.9	PED	-0.2	Nearst
	Sansho	16	G1	€322	53	118	153	16	12	194	13.9	18.2	32	+0.11	+0.20	6.0	-3.3	PED	0.8	Mo Salah
FR7890	Eli	17	G1	€320	59	110	142	10	26	66	19.5	12.7	32	+0.29	+0.18	4.5	-4.3	SRM	-2.2	Dandyman
FR7986	Zak	17	G1	€320	51	98	158	22	1	187	17.1	13.5	31	+0.17	+0.12	4.5	-4.3	PED	1.7	Olympus
FR7953	Cappa	18	G1	€319	53	102	149	26	19	-26	20.9	9.6	30	+0.38	+0.18	6.5	-3.7	SRM	-1.2	Sexton
FR7926	Zakery	18	G1	€319	53	105	149	12	27	26	17.7	12.1	30	+0.29	+0.19	6.0	-3.8	SRM	-0.2	Stark
	Trotter	19	G1	€318	57	91	156	8	15	113	15.7	11.6	27	+0.19	+0.13	3.5	-4.7	PED	0.0	Ring O
FR7884	Kew	19	G1	€318	58	107	155	11	11	11	17.9	12.0	30	+0.30	+0.20	6.1	-4.4	SRM	-0.5	Supreme
FR8073	Gem	20	G1	€317	58	114	135	12	25	228	20.0	16.0	36	+0.18	+0.14	4.5	-5.0	SRM	-1.6	Dandyman
FR7920	Fourelms	20	G1	€315	53	122	131	3	13	94	22.7	14.2	37	+0.33	+0.19	6.6	-3.6	SRM	-1.3	Esmonde
FR7944	Nifty	21	G1	€313	51	121	119	8	18	213	20.4	16.6	37	+0.20	+0.16	5.3	-3.8	PED	-1.1	Stark
FR7860	Redcliff Red	21	G1	€313	51	111	125	22	9	156	20.9	13.9	35	+0.25	+0.15	5.9	-3.5	PED	0.4	Ronald
FR7878	Karma	22	G1	€311	51	92	143	25	15	-99	16.1	8.4	24	+0.35	+0.21	4.9	-4.6	SRM	-0.6	Sergi
FR7851	Zaki	22	G1	€310	60	117	142	8	10	53	19.8	13.8	34	+0.31	+0.21	4.5	-5.2	PED	-1.1	Harold
FR8013	Ginobili	23	G1	€300	54	108	136	9	5	114	18.0	14.0	32	+0.23	+0.17	4.4	-4.5	PED	-1.8	Virginia
FR7854	Hermosa	23	G1	€294	55	133	122	14	7	235	19.1	19.4	39	+0.17	+0.19	7.1	-3.3	PED	0.4	Joker
FR7941	Shunter	24	G1	€291	50	120	120	14	15	113	18.1	15.8	34	+0.23	+0.20	5.6	-4.4	PED	-0.4	Joseph
FR7857	Mystery	24	G1	€290	60	112	129	8	3	285	19.3	16.7	36	+0.14	+0.12	6.4	-3.9	PED	-0.1	Mystic
FR7464	Mercury	25	G1	€279	52	108	125	-1	8	311	18.7	16.5	35	+0.11	+0.10	5.2	-4.4	SRM	-0.6	Dell Boy
FR7446	Maykir	25	G1	€276	53	106	109	11	7	140	19.0	13.4	32	+0.23	+0.15	6.9	-5.3	SRM	-1.0	Beechnut
FR7362	Apex	26	G1	€275	51	99	124	5	4	90	14.6	13.1	28	+0.19	+0.17	6.7	-4.3	PED	-0.9	Ronald
FR7737	Lear	26	G1	€242	62	71	107	11	18	275	14.7	11.1	26	+0.07	+0.03	5.3	-3.1	PED	-0.1	Mystic

## Progressive Genetics Active G1 High Type Bulls January 2022

Bull Details				EBI & Sub-Indexes						Production					Calv		Pedigree			
CODE	Name	Page	Proof	EBI	Rel	Prod	Fert	Health	Maint	Milk	Fat	Prot	F+P	Fat	Prot	Calv	Gest	Ped	Type	Sire
FR7923	Francis	28	G1	€294	56	131	88	26	-4	293	21.9	19.1	41	+0.17	+0.15	5.6	-4.6	PED	2.7	Jeronimo
FR7910	Chilli	28	G1	€286	52	119	99	25	-2	510	19.6	21.1	41	-0.01	+0.06	4.9	-4.4	PED	2.6	Chilton
FR7905	Alibi	27	G1	€254	58	123	81	22	-2	365	26.0	17.4	43	+0.19	+0.08	5.8	-2.9	PED	2.1	Praser

## Progressive Genetics Active G1 Xbred & Jersey Bulls January 2022

Bull Details				EBI & Sub-Indexes						Production					Calv		Pedigree			
CODE	Name	Page	Proof	EBI	Rel	Prod	Fert	Health	Maint	Milk	Fat	Prot	F+P	Fat	Prot	Calv	Gest	Ped	Type	Sire
FRX134	Endurance F14J2	30	G1	€335	52	113	147	16	29	158	20.0	14.5	34	+0.23	+0.16	5.6	-3.7	SRM	-0.8	Stark
	Potomac F11J5	31	G1	€322	52	98	165	11	32	-111	20.6	7.6	28	+0.44	+0.20	5.2	-2.8	XSR	-0.4	Rio
FRX137	Albo F12J4	30	G1	€316	57	117	132	13	12	126	17.4	15.6	33	+0.21	+0.19	5.1	-4.0	XSR	0.2	Albert
JEX146	Firelite F10J6	31	G1	€287	53	117	133	1	30	115	21.4	14.1	35	+0.29	+0.17	4.3	-3.2	XSR	-0.3	Rio
JE8067	Fanta (Jersey)	32	G1	€246	50	92	96	8	46	-433	16.4	3.2	20	+0.63	+0.34	3.0	-3.6	MXS	0.0	Crisis

# Starwar SRM

G1-EBI

A.I. Code: FR7866

(IG)CARRIGLEAGH STARWAR SRM

81% Hol

Pivotal x Shamrock x Haze

aAa: -

HB No.: HOLIRLM214158692202

Beta Casein: -

Bred by: John Reidy Kildorrery Co Cork



Dam of Pivotal

Genomic, ICBF Jan 2022		
	€	Rel
EBI	€382	54
Production	€108	74
Fertility	€180	39
Calving	€53	56
Beef	€-6	44
Health	€17	63
Maintenance	€23	40
Management	€6	58

PRODUCTION			MANAGEMENT		
Milk (Kg)	240	Daus 0	Temperament	0.01	Average
Fat (Kg)	19.1	Herds 0	Milking Speed	-19	Fast
Protein (Kg)	15.4	% Rel 74	CALVING		
Fat %	+0.16		Heifer Calv. Diff	4.5	57 0 Rec
Protein (%)	+0.12		Heifer Calv. Risk	Low	
			Cow Calv.	1.9	65
FERTILITY			Dau Calving	4.8	38
Calving Int (Days)	-9.5	Daus 0	Gest Len (Days)	-4.1	61
Survival (%)	+4.9	Herds 0	Calf Mort	-0.6	47
HEALTH			BEEF		
Lameness	-0.07	Good	Carcass Wt	-3	Average
SCC	-0.12	Good	Carcass Conf	-0.5	Average
Mastitis (%)	-0.08	Good	TYPE		
			Overall	-1.5	
			Udder	-1.0	
			Feet and Legs	-1.3	

- A Leader for EBI
- Strong Maintenance & Health Index
- Over €100 Production

Sire:	(IG) KILFEACLE PIVOTAL / FR4728						
Dam:	CARRIGLEAGH BSH JODIE 1398						
Dam Yields:							
	Milk Kgs	Fat Kgs	Ptn Kgs	F+P	BFat%	Ptn%	Clv Int
5 Lact	9234	352	329	681	3.81	3.57	362
Ave	7921	314	286	600	3.98	3.61	368
Life (6 Lct)	48145	1913	1744	3657	3.97	3.62	
G Sire	(IG) BALLYBRIDE SHAMROCK						
G Dam	CARRIGLEAGH KOZ JODIE						
	Milk Kgs	Fat Kgs	Ptn Kgs	F+P	BFat%	Ptn%	Clv Int
8 Lact	9795	371	334	705	3.78	3.41	383
Ave	8491	315	302	617	3.72	3.56	363
Life (8 Lct)	66678	2470	2365	4835	3.70	3.55	

# Kingman PED

G1-EBI

A.I. Code: FR7869

(IG)CARRIGLEAGH KINGMAN

88% Hol

Pivotal x Harry x Evert

aAa: -

HB No.: HOLIRLM214158632213

Beta Casein: -

Bred by: John Reidy Kildorrery Co Cork



Harry Daughter

Genomic, ICBF Jan 2022		
	€	Rel
EBI	€378	54
Production	€110	74
Fertility	€191	38
Calving	€63	56
Beef	€-16	44
Health	€16	65
Maintenance	€16	39
Management	€-2	58

PRODUCTION			MANAGEMENT		
Milk (Kg)	-10	Daus 0	Temperament	-0.05	Average
Fat (Kg)	22.1	Herds 0	Milking Speed	0	Average
Protein (Kg)	10.6	% Rel 74	CALVING		
Fat %	+0.39		Heifer Calv. Diff	4.3	58 0 Rec
Protein (%)	+0.19		Heifer Calv. Risk	Low	
			Cow Calv.	1.6	66
FERTILITY			Dau Calving	4.5	38
Calving Int (Days)	-11.0	Daus 0	Gest Len (Days)	-4.9	60
Survival (%)	+4.2	Herds 0	Calf Mort	-0.4	47
HEALTH			BEEF		
Lameness	-0.12	Good	Carcass Wt	-8	Average
SCC	-0.02	Average	Carcass Conf	-0.6	Average
Mastitis (%)	-0.08	Good	TYPE		
			Overall	-1.6	
			Udder	-0.8	
			Feet and Legs	-1.1	

- A Leader for EBI
- +0.19% Protein
- Ticks a lot of boxes

Sire:	(IG) KILFEACLE PIVOTAL / FR4728						
Dam:	CARRIGLEAGH KATIE 1723						
Dam Yields:							
	Milk Kgs	Fat Kgs	Ptn Kgs	F+P	BFat%	Ptn%	Clv Int
3 Lact	6997	378	287	665	5.41	4.10	369
Ave	6273	333	256	589	5.31	4.08	366
Life (3 Lct)	18912	1006	773	1779	5.32	4.09	
G Sire	(IG) OAKGLEN HARRY						
G Dam	CARRIGLEAGH LHZ KATIE 1423						
	Milk Kgs	Fat Kgs	Ptn Kgs	F+P	BFat%	Ptn%	Clv Int
5 Lact	8119	350	300	650	4.31	3.69	377
Ave	6687	293	250	544	4.40	3.74	371
Life (6 Lct)	39163	1715	1461	3176	4.38	3.73	

# Superdry PED

(IG)HARTEFIELD SUPERDRY

Supreme x Tossy x Uphill  
HB No.: HOLIRLM217139141845

Bred by: Patrick Harte Clonroche Co Wexford



G1-EBI

A.I. Code: FR7863

81% Hol

aAa: -  
Beta Casein: -



Dam of Superdry

Genomic, ICBF Jan 2022		0% 10% 20% 30% 40% 50% 60% 70% 80% 90% 100%	
€	Rel		
EBI	€377	58	
Production	€86	78	
Fertility	€208	46	
Calving	€54	50	
Beef	€-8	45	
Health	€29	66	
Maintenance	€11	45	
Management	€-3	59	

PRODUCTION		MANAGEMENT	
Milk (Kg)	38 Daus 0	Temperament	-0.19 Below Ave
Fat (Kg)	16.5 Herds 0	Milking Speed	-13 Fast
Protein (Kg)	9.4 % Rel 78	<b>CALVING</b>	
Fat %	+0.26	Heifer Calv. Diff	5.5 56 0 Rec
Protein (%)	+0.14	Heifer Calv. Risk	Low
<b>FERTILITY</b>		Cow Calv.	2.2 64
Calving Int (Days)	-12.8 Daus 0	Dau Calving	4.3 39
Survival (%)	+3.7 Herds 0	Gest Len (Days)	-4.2 47
<b>HEALTH</b>		Calf Mort	-0.8 46
Lameness	-0.11 Good	<b>BEEF</b>	
SCC	-0.21 Good	Carcass Wt	-3 Average
Mastitis (%)	-0.14 Good	Carcass Conf	-0.7 Average
		<b>TYPE</b>	
		Overall	-0.9
		Udder	-1.3
		Feet and Legs	0.1

- A Fertility Champion
- A Leader for EBI with a different pedigree
- Excellent Health Index

Sire:	(IG) SPRINGHAVEN SUPREME / FR4482						
Dam:	HARTEFIELD LEXIE 1181						
Dam Yields:							
	Milk Kgs	Fat Kgs	Ptn Kgs	F+P	BFat%	Ptn%	Clv Int
5 Lact	7606	336	290	626	4.41	3.81	361
Ave	6631	280	259	538	4.20	3.89	346
Life (6 Lct)	37734	1577	1467	3044	4.18	3.89	
G Sire:	(IG) KNOCKCAIS TOSSY						
G Dam:	HARTEFIELD UPH LEXIE						
	Milk Kgs	Fat Kgs	Ptn Kgs	F+P	BFat%	Ptn%	Clv Int
6 Lact	7949	264	291	555	3.32	3.67	358
Ave	7269	271	270	541	3.75	3.72	375
Life (6 Lct)	40280	1480	1485	2965	3.67	3.69	

# Redsky Red SRM

(IG)CORROVOLLEY REDSKY SRM

Pivotal x Anton x Evert  
HB No.: HOLIRLM213868182580

Bred by: John Richard Sweetnam, Ballydehob Co Cork



G1-EBI

A.I. Code: -

81% Hol

aAa: -  
Beta Casein: -



Anton Daughter

Genomic, ICBF Jan 2022		0% 10% 20% 30% 40% 50% 60% 70% 80% 90% 100%	
€	Rel		
EBI	€357	54	
Production	€98	73	
Fertility	€170	38	
Calving	€58	57	
Beef	€-5	44	
Health	€21	65	
Maintenance	€12	39	
Management	€3	58	

PRODUCTION		MANAGEMENT	
Milk (Kg)	168 Daus 0	Temperament	-0.02 Average
Fat (Kg)	14.0 Herds 0	Milking Speed	-11 Average
Protein (Kg)	14.0 % Rel 73	<b>CALVING</b>	
Fat %	+0.13	Heifer Calv. Diff	4.3 59 0 Rec
Protein (%)	+0.15	Heifer Calv. Risk	Low
<b>FERTILITY</b>		Cow Calv.	1.5 67
Calving Int (Days)	-9.9 Daus 0	Dau Calving	5.3 39
Survival (%)	+3.7 Herds 0	Gest Len (Days)	-4.9 60
<b>HEALTH</b>		Calf Mort	-0.3 47
Lameness	-0.13 Good	<b>BEEF</b>	
SCC	-0.11 Good	Carcass Wt	-3
Mastitis (%)	-0.06 Good	Carcass Conf	-0.6
		<b>TYPE</b>	
		Overall	-0.8
		Udder	-0.5
		Feet and Legs	-1.0

- Red Holstein Sire
- Production with Excellent Fertility
- Good Health Index

Sire:	(IG) KILFEACLE PIVOTAL / FR4728						
Dam:	CORROVOLLEY 2239KAREN						
Dam Yields:							
	Milk Kgs	Fat Kgs	Ptn Kgs	F+P	BFat%	Ptn%	Clv Int
2 Lact	6052	294	225	519	4.87	3.71	365
Ave	5566	263	200	463	4.73	3.57	365
Life (2 Lct)	9844	454	345	799	4.61	3.50	
G Sire:	(IG) DIAMOND ANTON / FR2239						
G Dam:	CORROVOLLEY LHZ KAREN						
	Milk Kgs	Fat Kgs	Ptn Kgs	F+P	BFat%	Ptn%	Clv Int
4 Lact	7199	345	275	620	4.80	3.82	358
Ave	6161	303	245	548	4.93	3.98	358
Life (6 Lct)	29807	1452	1176	2628	4.87	3.95	

# Argile SRM

(IG)GLENRAUN ARGILE SRM

Seville x Argent x Kenny  
HB No.: HOLIRLM226952870310

Bred by: Bryan Lanigan, Thurles Co. Kilkenny



Dam of Seville

Genomic, ICBF Jan 2022			
	€	Rel	
<b>EBI</b>	<b>€356</b>	<b>55</b>	
Production	€113	73	
Fertility	€182	42	
Calving	€52	56	
Beef	€-12	44	
Health	€5	65	
Maintenance	€12	41	
Management	€3	59	

PRODUCTION		MANAGEMENT	
Milk (Kg)	-156 Daus 0	Temperament	0.13 Average
Fat (Kg)	15.0 Herds 0	Milking Speed	4 Average
Protein (Kg)	11.0 % Rel 73	<b>CALVING</b>	
Fat %	+0.39	Heifer Calv. Diff	3.6 58 0 Rec
Protein (%)	+0.30	Heifer Calv. Risk	Low
<b>FERTILITY</b>		Cow Calv.	1.5 63
Calving Int (Days)	-10.6 Daus 0	Dau Calving	5.9 38
Survival (%)	+4.0 Herds 0	Gest Len (Days)	-4.5 60
<b>HEALTH</b>		Calf Mort	-0.3 47
Lameness	-0.06 Good	<b>BEEF</b>	
SCC	0.07 Average	Carcass Wt	-6
Mastitis (%)	-0.05 Good	Carcass Conf	-0.6
		<b>TYPE</b>	
		Overall	-0.9
		Udder	-0.5
		Feet and Legs	-1.0

- Breed Leading Percentages
- +0.39% Fat
- +0.30% Protein

G1-EBI

A.I. Code: FR8010

78% Hol

aAa: -

Beta Casein: -

# Rooster PED

IG ROOSTER Registration Pending

Seville x Asher x Sam  
HB No.: HOLIRLM214909861906

Bred by: Liam Hennessy, Kells Co Kilkenny



Dam of Rooster

Genomic, ICBF Jan 2022			
	€	Rel	
<b>EBI</b>	<b>€356</b>	<b>56</b>	
Production	€104	77	
Fertility	€181	41	
Calving	€60	54	
Beef	€-5	44	
Health	€11	61	
Maintenance	€4	40	
Management	€2	56	

PRODUCTION		MANAGEMENT	
Milk (Kg)	127 Daus 0	Temperament	0.06 Average
Fat (Kg)	16.5 Herds 0	Milking Speed	1 Average
Protein (Kg)	13.8 % Rel 77	<b>CALVING</b>	
Fat %	+0.20	Heifer Calv. Diff	4.0 56 0 Rec
Protein (%)	+0.16	Heifer Calv. Risk	Low
<b>FERTILITY</b>		Cow Calv.	1.8 63
Calving Int (Days)	-11.6 Daus 0	Dau Calving	0.0 0
Survival (%)	+2.8 Herds 0	Gest Len (Days)	-5.2 59
<b>HEALTH</b>		Calf Mort	-0.4 47
Lameness	-0.05 Good	<b>BEEF</b>	
SCC	-0.07 Average	Carcass Wt	0 Average
Mastitis (%)	-0.05 Good	Carcass Conf	-0.9 Average
		<b>TYPE</b>	
		Overall	-1.0
		Udder	-1.1
		Feet and Legs	-0.3

- Seville Son with Huge EBI
- Over €100 Production
- Super All-round proof

Sire:	(IG) DOONMANAGH SEVILLE / FR4547						
Dam:	GLENRAUN APRIL 1512						
Dam Yields:							
	Milk Kgs	Fat Kgs	Ptn Kgs	F+P	BFat%	Ptn%	Clv Int
1 Lact	4567	205	169	374	4.49	3.70	N/A
Ave	4567	205	169	374	4.49	3.70	N/A
Life (1 Lct)	4059	176	145	321	4.34	3.57	
G Sire	DEANSGROVE ARGENT						
G Dam	GLENRAUN HMY APRIL 1177						
	Milk Kgs	Fat Kgs	Ptn Kgs	F+P	BFat%	Ptn%	Clv Int
4 Lact	7146	314	249	563	4.40	3.49	361
Ave	6268	302	224	526	4.86	3.58	366
Life (4 Lct)	24789	1193	887	2080	4.81	3.58	

Sire:	(IG) DOONMANAGH SEVILLE						
Dam:	MILEWATER ASH ROSETTA 2						
Dam Yields:							
	Milk Kgs	Fat Kgs	Ptn Kgs	F+P	BFat%	Ptn%	Clv Int
1 Lact	10063	424	387	811	4.21	3.84	330
Ave	8000	357	307	664	4.48	3.82	321
Life (3 Lct)	23999	1070	921	1991	4.48	3.82	
G Sire	KILQUANE ASHER						
G Dam	MILEWATER SBQ ROSETTA						
	Milk Kgs	Fat Kgs	Ptn Kgs	F+P	BFat%	Ptn%	Clv Int
3 Lact	10060	382	353	735	3.80	3.51	364
Ave	8997	330	317	647	3.68	3.52	372
Life (6 Lct)	53982	1979	1904	3883	3.68	3.52	

# Newton SRM

(IG)KILCORAN NEWTON SRM

Andrew x Rudolph x Sochar  
HB No.: HOLIRLM225963472952

Bred by: Andrew Leeson Cuffesgrange Co Kilkenny



G1-EBI  
A.I. Code: FR7932

63% Hol

aAa: -  
Beta Casein: -



Dam of Newton

Genomic, ICBF Jan 2022		
	€	Rel
EBI	€355	56
Production	€100	78
Fertility	€198	42
Calving	€39	49
Beef	€-25	44
Health	€10	62
Maintenance	€27	40
Management	€4	57

PRODUCTION			MANAGEMENT		
Milk (Kg)	-60	Daus 0	Temperament	0.02	Average
Fat (Kg)	13.9	Herds 0	Milking Speed	-12	Fast
Protein (Kg)	11.2	% Rel 78	CALVING		
Fat %	+0.29		Heifer Calv. Diff	5.1	54 0 Rec
Protein (%)	+0.23		Heifer Calv. Risk	Low	
			Cow Calv.	2.5	61
FERTILITY			Dau Calving	5.3	37
Calving Int (Days)	-12.5	Daus 0	Gest Len (Days)	-3.4	47
Survival (%)	+3.3	Herds 0	Calf Mort	-0.5	47
HEALTH			BEEF		
Lameness	-0.06	Good	Carcass Wt	-12	Lighter
SCC	-0.02	Average	Carcass Conf	-0.8	Average
Mastitis (%)	-0.06	Good	TYPE		
			Overall	-1.5	
			Udder	-1.6	
			Feet and Legs	-1.3	

- Excellent Maintenance Index
- +0.23% Protein
- 4.1% Protein Dam

Sire:	(IG) FAHA ANDREW / FR4414						
Dam:	KILCORAN PHC NORA						
Dam Yields:							
	Milk Kgs	Fat Kgs	Ptn Kgs	F+P	BFat%	Ptn%	Clv Int
4 Lact	6530	323	270	593	4.94	4.14	356
Ave	5970	296	246	542	4.97	4.11	366
Life (4 Lct)	23019	1128	941	2069	4.90	4.09	
G Sire (IG) CURRIHEVERN RUDOLPH / PHC							
G Dam KILCORAN RVJ NORA							
	Milk Kgs	Fat Kgs	Ptn Kgs	F+P	BFat%	Ptn%	Clv Int
3 Lact	8283	355	316	671	4.29	3.81	366
Ave	7208	317	271	588	4.42	3.76	369
Life (5 Lct)	35648	1559	1334	2893	4.37	3.74	

# Blandford PED

(IG)BRACKILE BLANDFORD

Pivotal x Ebony x Pirate  
HB No.: HOLIRLM225322561416

Bred by: Gerard O'Dwyer, Pallasgreen Co Limerick



G1-EBI  
A.I. Code: FR7904

81% Hol

aAa: -  
Beta Casein: -



Dam of Pivotal

Genomic, ICBF Jan 2022		
	€	Rel
EBI	€354	51
Production	€113	70
Fertility	€172	36
Calving	€47	50
Beef	€-13	44
Health	€16	63
Maintenance	€15	39
Management	€4	57

PRODUCTION			MANAGEMENT		
Milk (Kg)	75	Daus 0	Temperament	0.06	Average
Fat (Kg)	17.1	Herds 0	Milking Speed	-7	Average
Protein (Kg)	14.3	% Rel 70	CALVING		
Fat %	+0.24		Heifer Calv. Diff	6.6	58 0 Rec
Protein (%)	+0.20		Heifer Calv. Risk	Moderate	
			Cow Calv.	2.7	65
FERTILITY			Dau Calving	5.1	35
Calving Int (Days)	-10.2	Daus 0	Gest Len (Days)	-4.9	46
Survival (%)	+3.6	Herds 0	Calf Mort	0.1	46
HEALTH			BEEF		
Lameness	-0.11	Good	Carcass Wt	-6	Average
SCC	0.01	Average	Carcass Conf	-0.8	Average
Mastitis (%)	-0.10	Good	TYPE		
			Overall	-0.7	
			Udder	-0.2	
			Feet and Legs	-0.8	

- Sky-High EBI
- +0.20% Protein
- High Health Index

Sire:	(IG) KILFEACLE PIVOTAL / FR4728						
Dam:	BRACKILE 4481 BLOSSOM 1138						
Dam Yields:							
	Milk Kgs	Fat Kgs	Ptn Kgs	F+P	BFat%	Ptn%	Clv Int
1 Lact	4257	206	169	375	4.83	3.98	N/A
Ave	4257	206	169	375	4.83	3.98	N/A
Life (1 Lct)	4206	203	167	370	4.83	3.97	
G Sire (IG) MONABROGUE EBONY / FR4481							
G Dam BRACKILE PSZ BLOSSOM 2							
	Milk Kgs	Fat Kgs	Ptn Kgs	F+P	BFat%	Ptn%	Clv Int
1 Lact	4829	269	177	446	5.58	3.66	NA
Ave	4829	269	177	446	5.58	3.66	NA
Life (1 Lct)	4573	254	166	420	5.55	3.63	

# Aspenaro PED

(IG)ROBINSTOWN ASPENARO

Seville x Pirate x Manfred  
HB No.: HOLIRLM214623171523

Bred by: Patrick Forristal Clonroche Co Wexford



G1-EBI  
A.I. Code: FR7887

81% Hol

aAa: -  
Beta Casein: -



Pirate Daughter

Genomic, ICBF Jan 2022		
	€	Rel
EBI	€352	57
Production	€86	78
Fertility	€201	43
Calving	€58	56
Beef	€-9	45
Health	€9	65
Maintenance	€4	41
Management	€3	60

PRODUCTION		
Milk (Kg)	110	Daus 0
Fat (Kg)	10.2	Herds 0
Protein (Kg)	12.7	% Rel 78
Fat %	+0.10	
Protein (%)	+0.15	

FERTILITY		
Calving Int (Days)	-12.4	Daus 0
Survival (%)	+3.6	Herds 0

HEALTH		
Lameness	-0.04	Good
SCC	-0.09	Average
Mastitis (%)	-0.03	Good

MANAGEMENT		
Temperament	-0.03	Average
Milking Speed	-12	Fast

CALVING		
Heifer Calv. Diff	4.8	58 0 Rec
Heifer Calv. Risk	Low	
Cow Calv.	2.1	66
Dau Calving	5.0	39
Gest Len (Days)	-5.1	60
Calf Mort	-0.5	46

BEEF		
Carcass Wt	-3	Average
Carcass Conf	-0.6	Average

TYPE		
Overall	-0.5	
Udder	-0.8	
Feet and Legs	-0.6	

- Breed Leader for Daughter Fertility
- 4% Protein Dam
- +0.15% Protein

Sire:	(IG) KILFEACLE PIVOTAL / FR4728						
Dam:	BRACKILE 4481 BLOSSOM 1138						
Dam Yields:							
	Milk Kgs	Fat Kgs	Ptn Kgs	F+P	BFat%	Ptn%	Clv Int
1 Lact	4257	206	169	375	4.83	3.98	N/A
Ave	4257	206	169	375	4.83	3.98	N/A
Life (1 Lct)	4206	203	167	370	4.83	3.97	
G Sire	(IG) MONABROGUE EBONY / FR4481						
G Dam	BRACKILE PSZ BLOSSOM 2						
	Milk Kgs	Fat Kgs	Ptn Kgs	F+P	BFat%	Ptn%	Clv Int
1 Lact	4829	269	177	446	5.58	3.66	NA
Ave	4829	269	177	446	5.58	3.66	NA
Life (1 Lct)	4573	254	166	420	5.55	3.63	

# Pragon SRM

(IG)CLOUNTIES PRAGON

Pivotal x Waterford x KOZ  
HB No.: HOLIRLM218537552464

Bred by: Andrew Wheldon, Leap, Co Cork



G1-EBI  
A.I. Code: -

78% Hol

aAa: -  
Beta Casein: -



Dam of Pivotal

Genomic, ICBF Jan 2022		
	€	Rel
EBI	€351	52
Production	€89	70
Fertility	€186	35
Calving	€60	56
Beef	€-22	44
Health	€13	62
Maintenance	€23	39
Management	€2	56

PRODUCTION		
Milk (Kg)	172	Daus 0
Fat (Kg)	16.4	Herds 0
Protein (Kg)	11.9	% Rel 70
Fat %	+0.16	
Protein (%)	+0.10	

FERTILITY		
Calving Int (Days)	-10.1	Daus 0
Survival (%)	+4.8	Herds 0

HEALTH		
Lameness	-0.06	Good
SCC	-0.08	Average
Mastitis (%)	-0.06	Good

MANAGEMENT		
Temperament	-0.06	Average
Milking Speed	-15	Fast

CALVING		
Heifer Calv. Diff	4.8	58 0 Rec
Heifer Calv. Risk	Low	
Cow Calv.	1.6	64
Dau Calving	0.0	0
Gest Len (Days)	-5.2	60
Calf Mort	-0.3	47

BEEF		
Carcass Wt	-14	Lighter
Carcass Conf	-0.7	Average

TYPE		
Overall	-0.9	
Udder	-0.5	
Feet and Legs	-1.4	

- High EBI with Excellent Fertility
- Moderate Size
- Health Improvement

Sire:	(IG) KILFEACLE PIVOTAL						
Dam:							
Dam Yields:							
	Milk Kgs	Fat Kgs	Ptn Kgs	F+P	BFat%	Ptn%	Clv Int
1 Lact	5620	234	201	435	4.16	3.58	NA
Ave	5620	234	201	435	4.16	3.58	NA
Life (1 Lct)	5620	234	201	435	4.16	3.58	
G Sire	BALLYBRIDE WATERFORD						
G Dam	IE141313891250						
	Milk Kgs	Fat Kgs	Ptn Kgs	F+P	BFat%	Ptn%	Clv Int
5 Lact	7293	278	257	535	3.81	3.53	369
Ave	6089	260	221	481	4.29	3.63	375
Life (8 Lct)	48709	2079	1765	3844	4.29	3.63	



# Finneas SRM

IG FINNEAS Registration Pending

Sexton x LHZ x HMY

HB No.: HOLIRLM214435732825

Bred by: John Joe Flavin, Clashmore Co Waterford



A.I. Code: -

84% Hol

aAa: -

Beta Casein: -



Dam of Sexton



G1-EBI

# Sherjah SRM

(IG)BLACKNEY SHERJAH SRM

Arco x Philip x Hammer

HB No.: HOLIRLM222610722385

Bred by: Philip Donohoe, Goresbridge Co Kilkenny



A.I. Code: FR7938

59% Hol

aAa: -

Beta Casein: -



Dam of Sherjah



Genomic, ICBF Jan 2022		
	€	Rel
EBI	€351	54
Production	€94	74
Fertility	€170	39
Calving	€55	54
Beef	€-8	40
Health	€21	66
Maintenance	€15	38
Management	€3	61

PRODUCTION			MANAGEMENT		
Milk (Kg)	-110	Daus 0	Temperament	-0.03	Average
Fat (Kg)	15.1	Herds 0	Milking Speed	-12	Fast
Protein (Kg)	9.0	% Rel 74	CALVING		
Fat %	+0.35		Heifer Calv. Diff	3.9	51 0 Rec
Protein (%)	+0.23		Heifer Calv. Risk	Low	
FERTILITY			Cow Calv.	1.6	61
Calving Int (Days)	-9.5	Daus 0	Dau Calving	0.0	0
Survival (%)	+4.1	Herds 0	Gest Len (Days)	-4.6	60
HEALTH			Calf Mort	-0.3	43
Lameness	-0.09	Good	BEEF		
SCC	-0.15	Good	Carcass Wt	-3	Average
Mastitis (%)	-0.10	Good	Carcass Conf	-0.7	Average
			TYPE		
			Overall	-1.3	
			Udder	-0.5	
			Feet and Legs	-2.7	

- Massive Percentages Sexton Son
- +0.23% Protein
- High Health Index

Sire:	KNOCKREAGH SEXTON SRM						
Dam:	IE351293991752						
Dam Yields:							
	Milk Kgs	Fat Kgs	Ptn Kgs	F+P	BFat%	Ptn%	Clv Int
5 Lact	7737	363	317	680	4.69	4.10	360
Ave	5945	287	244	531	4.85	4.10	360
Life (5 Lct)	29723	1435	1219	2654	4.85	4.10	
G Sire	(IG) LAURAGH EVERT						
G Dam	IE351293971247						
	Milk Kgs	Fat Kgs	Ptn Kgs	F+P	BFat%	Ptn%	Clv Int
5 Lact	6609	305	258	563	4.62	3.91	360
Ave	5973	276	234	510	4.66	3.92	361
Life (7 Lct)	41812	1935	1638	3573	4.66	3.92	

Genomic, ICBF Jan 2022		
	€	Rel
EBI	€350	53
Production	€91	73
Fertility	€171	37
Calving	€48	54
Beef	€-12	40
Health	€19	61
Maintenance	€25	39
Management	€8	55

PRODUCTION			MANAGEMENT		
Milk (Kg)	-23	Daus 0	Temperament	-0.11	Below Ave
Fat (Kg)	14.1	Herds 0	Milking Speed	-38	Fast
Protein (Kg)	10.1	% Rel 73	CALVING		
Fat %	+0.26		Heifer Calv. Diff	4.2	54 0 Rec
Protein (%)	+0.19		Heifer Calv. Risk	Low	
FERTILITY			Cow Calv.	1.8	61
Calving Int (Days)	-10.8	Daus 0	Dau Calving	5.5	36
Survival (%)	+2.9	Herds 0	Gest Len (Days)	-4.0	60
HEALTH			Calf Mort	-0.2	47
Lameness	-0.07	Good	BEEF		
SCC	-0.15	Good	Carcass Wt	-5	Average
Mastitis (%)	-0.09	Good	Carcass Conf	-0.7	Average
			TYPE		
			Overall	-0.2	
			Udder	0.3	
			Feet and Legs	-0.5	

- +0.26% Fat
- High Maintenance Index
- Health Improver

Sire:	(IG) PALLASKENRY ARCO SRM / FR5208						
Dam:	BLACKNEY ROSE 1466						
Dam Yields:							
	Milk Kgs	Fat Kgs	Ptn Kgs	F+P	BFat%	Ptn%	Clv Int
5 Lact	8520	436	347	783	5.11	4.08	337
Ave	6652	339	274	613	5.09	4.13	368
Life (5 Lct)	32627	1657	1338	2995	5.08	4.10	
G Sire	BALLYOGAHA PHILIP / ZPB						
G Dam	BLACKNEY ROSE 1246						
	Milk Kgs	Fat Kgs	Ptn Kgs	F+P	BFat%	Ptn%	Clv Int
2 Lact	6119	240	224	464	3.93	3.66	N/A
Ave	6119	240	224	464	3.93	3.66	N/A
Life (1 Lct)	7542	317	289	606	4.20	3.83	

# Ornate SRM

(IG)LACCACROSS ORNATE SRM

Seville x Uphill x Adema  
HB No.: HOLIRLM213277642972

Bred by: Tim Kent, Mitchelstown Co Cork



A.I. Code: FR8016

69% Hol

aAa: -  
Beta Casein: -



Dam of Seville

G1-EBI

# Jerico SRM

(IG) JERICO Registration Pending

Pivotal x Grandeur x PBM  
HB No.: HOLIRLM216751514919

Bred by: Thomas O'Neill, Ballineen, Co Cork



A.I. Code: -

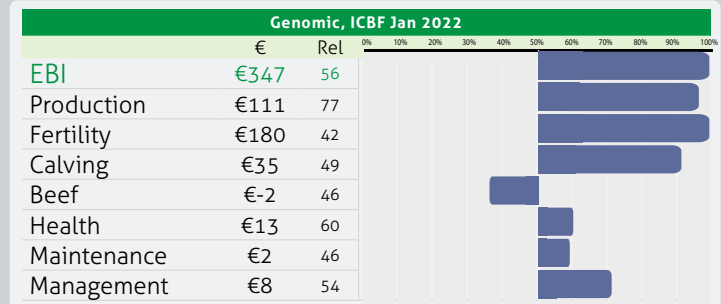
66% Hol

aAa: -  
Beta Casein: -



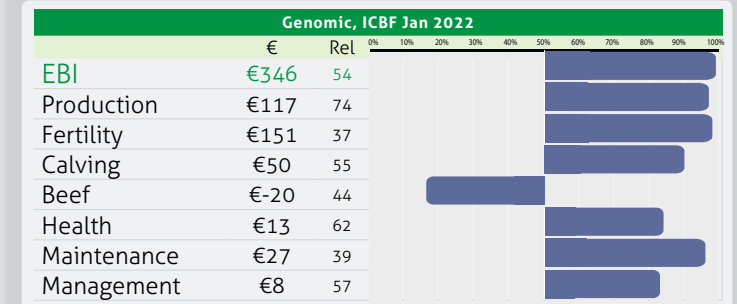
Dam of Pivotal

G1-EBI



PRODUCTION			MANAGEMENT		
Milk (Kg)	-123	Daus 0	Temperament	0.00	Average
Fat (Kg)	19.0	Herds 0	Milking Speed	0	Average
Protein (Kg)	10.0	% Rel 77	CALVING		
Fat %	+0.42		Heifer Calv. Diff	4.6	54 0 Rec
Protein (%)	+0.26		Heifer Calv. Risk	0	
FERTILITY			Cow Calv.	2.5	61
Calving Int (Days)	-11.2	Daus 0	Dau Calving	0.0	0
Survival (%)	+3.1	Herds 0	Gest Len (Days)	-3.1	48
HEALTH			Calf Mort	0.0	0
Lameness	-0.05	Good	BEEF		
SCC	-0.09	Average	Carcass Wt	0	Average
Mastitis (%)	-0.07	Good	Carcass Conf	0.0	Above Ave
			TYPE		
			Overall	-1.5	
			Udder	-1.1	
			Feet and Legs	-1.7	

- Mr Percentages
- +0.26% Protein
- +0.42% Fat



PRODUCTION			MANAGEMENT		
Milk (Kg)	187	Daus 0	Temperament	0.24	Good
Fat (Kg)	23.9	Herds 0	Milking Speed	2	Average
Protein (Kg)	14.3	% Rel 74	CALVING		
Fat %	+0.28		Heifer Calv. Diff	4.6	55 0 Rec
Protein (%)	+0.13		Heifer Calv. Risk	Low	
FERTILITY			Cow Calv.	1.7	62
Calving Int (Days)	-8.0	Daus 0	Dau Calving	0.0	0
Survival (%)	+4.1	Herds 0	Gest Len (Days)	-3.8	60
HEALTH			Calf Mort	-0.2	47
Lameness	-0.07	Good	BEEF		
SCC	-0.02	Average	Carcass Wt	-10	Average
Mastitis (%)	-0.08	Good	Carcass Conf	-0.8	Average
			TYPE		
			Overall	-1.1	
			Udder	-0.9	
			Feet and Legs	-1.0	

- Almost 40 Kgs Milk Solids
- High Maintenance Index
- Health Improver

Sire:	(IG) DOONMANAGH SEVILLE / FR4547S						
Dam:	LACCACROSS OAKLYNN						
Dam Yields:							
	Milk Kgs	Fat Kgs	Ptn Kgs	F+P	BFat%	Ptn%	Clv Int
3 Lact	7707	381	327	708	4.94	4.24	363
Ave	6280	308	261	569	4.90	4.15	365
Life (9 Lct)	55174	2685	2286	4971	4.87	4.14	
G Sire	MARS UPHILL						
G Dam	OAKLYNN						
	Milk Kgs	Fat Kgs	Ptn Kgs	F+P	BFat%	Ptn%	Clv Int
4 Lact	6613	255	233	488	3.86	3.53	340
Ave	6019	247	219	466	4.11	3.64	364
Life (4 Lct)	18001	723	644	1367	4.02	3.58	

Sire:	(IG) KILFEACLE PIVOTAL						
Dam:	IE141459782793						
Dam Yields:							
	Milk Kgs	Fat Kgs	Ptn Kgs	F+P	BFat%	Ptn%	Clv Int
4 Lact	6562	339	265	604	5.16	4.04	361
Ave	5714	294	228	522	5.14	3.98	370
Life (4 Lct)	22856	1175	912	2087	5.14	3.98	
G Sire	BAGWORTH PF GRANDEUR S1F						
G Dam	IE141459792101						
	Milk Kgs	Fat Kgs	Ptn Kgs	F+P	BFat%	Ptn%	Clv Int
5 Lact	7737	299	291	590	3.87	3.76	366
Ave	5968	255	224	479	4.31	3.75	368
Life (6 Lct)	35810	1527	1344	2688	4.31	3.75	

# Exude SRM

(IG) EXUDE Registration Pending

Bond x Harold x Gravity  
HB No.: HOLIRLM216751554617

Bred by: Thomas O'Neill, Ballineen, Co Cork

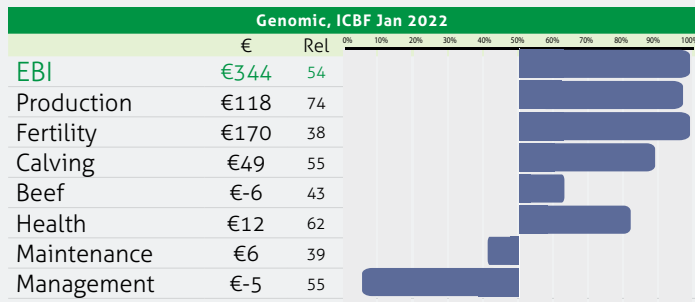


A.I. Code: -  
84% Hol  
aAa: -  
Beta Casein: -

G1-EBI



Dam of Bond



PRODUCTION			
Milk (Kg)	154	Daus	0
Fat (Kg)	17.7	Herds	0
Protein (Kg)	16.3	% Rel	74
Fat %	+0.20		
Protein (%)	+0.19		

FERTILITY			
Calving Int (Days)	-10.1	Daus	0
Survival (%)	+3.4	Herds	0

HEALTH			
Lameness	-0.10	Good	
SCC	-0.01	Average	
Mastitis (%)	-0.05	Good	

MANAGEMENT			
Temperament	-0.19	Below Ave	
Milking Speed	-6	Average	

CALVING			
Heifer Calv. Diff	4.2	56	0 Rec
Heifer Calv. Risk		Low	
Cow Calv.	1.7	63	
Dau Calving	0.0	0	
Gest Len (Days)	-4.0	60	
Calf Mort	-0.2	47	

BEEF			
Carcass Wt	-3	Average	
Carcass Conf	-0.7	Average	

TYPE			
Overall	-0.7		
Udder	-0.2		
Feet and Legs	-1.5		

- Different Sire Lines
- Over €110 Production
- Almost 35 Kgs Milk Solids

Sire:	(IG) FOXVIEW BOND						
Dam:	372216751553503						
Dam Yields:							
	Milk Kgs	Fat Kgs	Ptn Kgs	F+P	BFat%	Ptn%	Clv Int
2 Lact	5702	254	232	486	4.45	4.07	384
Ave	5344	240	213	453	4.49	3.98	386
Life (2 Lct)	10688	480	426	906	4.49	3.98	
G Sire:	(IG) TAMARIU HAROLD						
G Dam:	IE141459782389						
	Milk Kgs	Fat Kgs	Ptn Kgs	F+P	BFat%	Ptn%	Clv Int
5 Lact	8175	284	263	547	3.87	3.57	365
Ave	7331	284	263	547	3.87	3.57	373
Life (6 Lct)	36655	1422	1315	2630	3.87	3.57	

# Swoop PED

(IG)KNOCKSOUNA SWOOP

Harold x LWR x OCP  
HB No.: HOLIRLM223340863009

Bred by: Declan Flynn, Kilmallock Co Limerick

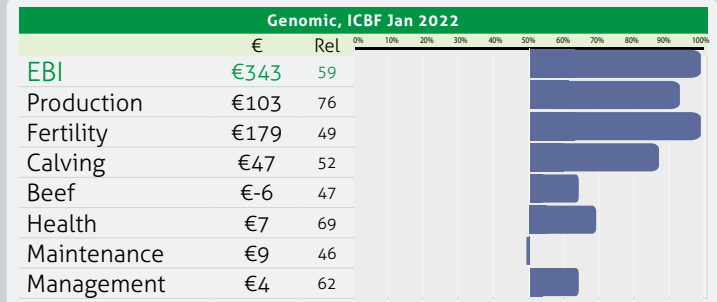


A.I. Code: -  
84% Hol  
aAa: -  
Beta Casein: -

G1-EBI



Harold Daughter



PRODUCTION			
Milk (Kg)	106	Daus	0
Fat (Kg)	15.1	Herds	0
Protein (Kg)	13.9	% Rel	76
Fat %	+0.19		
Protein (%)	+0.18		

FERTILITY			
Calving Int (Days)	-10.3	Daus	0
Survival (%)	+3.9	Herds	0

HEALTH			
Lameness	-0.05	Good	
SCC	-0.01	Average	
Mastitis (%)	-0.04	Good	

MANAGEMENT			
Temperament	-0.13	Below Ave	
Milking Speed	-27	Fast	

CALVING			
Heifer Calv. Diff	5.0	57	0 Rec
Heifer Calv. Risk		Low	
Cow Calv.	2.6	64	
Dau Calving	0.0	0	
Gest Len (Days)	-4.0	48	
Calf Mort	-0.5	46	

BEEF			
Carcass Wt	-3	Average	
Carcass Conf	-0.6	Average	

TYPE			
Overall	-1.3		
Udder	-0.7		
Feet and Legs	-1.9		

- Almost 30 kgs Milk Solids
- Huge EBI Harold Son
- +0.18% Protein

Sire:	(IG) TAMARIU HAROLD						
Dam:	KNOCKSOUNA KAY 77						
Dam Yields:							
	Milk Kgs	Fat Kgs	Ptn Kgs	F+P	BFat%	Ptn%	Clv Int
1 Lact	3756	173	140	313	4.62	3.74	NA
Ave	3756	173	140	313	4.62	3.74	NA
Life (1 Lct)	0	0	0	0	0.00	0.00	
G Sire:	(IG) DERRYLAMOGUE VINCENT						
G Dam:	KNOCKSOUNA KAY 61						
	Milk Kgs	Fat Kgs	Ptn Kgs	F+P	BFat%	Ptn%	Clv Int
3 Lact	6970	295	258	553	4.24	3.70	364
Ave	6590	294	240	534	4.48	3.63	364
Life (3 Lct)							

# Yogi SRM

(IG)HOMEVIEW YOGI SRM

Seville x Dandyman x Evert

HB No.: HOLIRLM215400790663

Bred by: Aidan Whitty, Gorey Co Wexford



A.I. Code: **FR8046**

75% Hol

aAa: -

Beta Casein: -



Dam of Yogi

Genomic, ICBF Jan 2022		€	Rel
EBI		€341	55
Production		€100	75
Fertility		€161	40
Calving		€60	55
Beef		€-16	44
Health		€10	62
Maintenance		€19	41
Management		€7	56

PRODUCTION		
Milk (Kg)	16	Daus 0
Fat (Kg)	13.0	Herds 0
Protein (Kg)	13.0	% Rel 75
Fat %	+0.21	
Protein (%)	+0.21	

FERTILITY		
Calving Int (Days)	-9.0	Daus 0
Survival (%)	+3.8	Herds 0

HEALTH		
Lameness	-0.04	Good
SCC	-0.06	Average
Mastitis (%)	-0.05	Good

MANAGEMENT		
Temperament	0.07	Good
Milking Speed	-16	Fast

CALVING		
Heifer Calv. Diff	4.0	62 0 Rec
Heifer Calv. Risk		Low
Cow Calv.	1.8	64
Dau Calving	0.0	0
Gest Len (Days)	-5.3	59
Calf Mort	0.0	0

BEEF		
Carcass Wt	0	Average
Carcass Conf	0.0	Above Ave

TYPE		
Overall	-1.5	
Udder	-1.0	
Feet and Legs	-2.0	

- Massive Percentages
- +0.21% Protein
- Moderate Size

Sire:	(IG) DOONMANAGH SEVILLE						
Dam:	HOMEVIEW LAURA 1879						
Dam Yields:							
	Milk Kgs	Fat Kgs	Ptn Kgs	F+P	BFat%	Ptn%	Clv Int
G Sire	(IG) CLORANE DANDYMAN						
G Dam	LAURA						
	Milk Kgs	Fat Kgs	Ptn Kgs	F+P	BFat%	Ptn%	Clv Int
2 Lact	7644	306	291	597	4.01	3.80	349
Ave	6697	283	258	541	4.25	3.85	364
Life (4 Lct)	25671	1066	977	2043	4.15	3.81	

G1-EBI

# Boum PED

(IG)KNOCKSOUNA BOUM

Pivotal x PHC x OCP

HB No.: HOLIRLM223340852975

Bred by: Declan Flynn, Kilmallock Co Limerick



A.I. Code: **FR7995**

84% Hol

aAa: -

Beta Casein: -



PHC Daughter

Genomic, ICBF Jan 2022		€	Rel
EBI		€340	53
Production		€109	71
Fertility		€173	38
Calving		€43	56
Beef		€-1	45
Health		€12	64
Maintenance		€7	39
Management		€-4	58

PRODUCTION		
Milk (Kg)	53	Daus 0
Fat (Kg)	19.7	Herds 0
Protein (Kg)	12.4	% Rel 71
Fat %	+0.31	
Protein (%)	+0.18	

FERTILITY		
Calving Int (Days)	-9.8	Daus 0
Survival (%)	+4.0	Herds 0

HEALTH		
Lameness	-0.10	Good
SCC	0.02	Average
Mastitis (%)	-0.07	Good

MANAGEMENT		
Temperament	-0.07	Average
Milking Speed	6	Average

CALVING		
Heifer Calv. Diff	7.2	61 0 Rec
Heifer Calv. Risk		Moderate
Cow Calv.	2.4	63
Dau Calving	5.2	39
Gest Len (Days)	-4.3	60
Calf Mort	-0.6	47

BEEF		
Carcass Wt	0	Average
Carcass Conf	-0.5	Average

TYPE		
Overall	-1.4	
Udder	-0.7	
Feet and Legs	-0.9	

- Over 30kgs Milk Solids
- Health Improver
- Balanced EBI Improvement

Sire:	(IG) KILFEACLE PIVOTAL / FR4728						
Dam:	KNOCKSOUNA BUNTY 158						
Dam Yields:							
	Milk Kgs	Fat Kgs	Ptn Kgs	F+P	BFat%	Ptn%	Clv Int
1 Lact	4053	194	160	354	4.79	3.96	NA
Ave	4053	194	160	354	4.79	3.96	NA
Life (1 Lct)	3915	184	153	337	4.70	3.91	
G Sire	(IG) CURRIHEVERN RUDOLPH / PHC						
G Dam	KNOCKSOUNA BUNTY 136						
	Milk Kgs	Fat Kgs	Ptn Kgs	F+P	BFat%	Ptn%	Clv Int
2 Lact	6675	299	248	547	4.47	3.72	386
Ave	6140	278	228	506	4.53	3.71	386
Life (2 Lct)	12636	575	472	1047	4.55	3.74	

# Frodon PED

(IG)BALLINFANE FRODON

Virginia x Vincent x Lotto  
HB No.: HOLIRLM216438262445

Bred by: John Kearney, Inniskeen, Co Louth



A.I. Code: -

78% Hol

aAa: -

Beta Casein: -



Dam of Frodon

Genomic, ICBF Jan 2022		
	€	Rel
EBI	€335	53
Production	€115	72
Fertility	€169	38
Calving	€42	51
Beef	€-18	42
Health	€25	63
Maintenance	€9	38
Management	€-8	56

PRODUCTION		
Milk (Kg)	-5	Daus 0
Fat (Kg)	17.7	Herds 0
Protein (Kg)	13.3	% Rel 72
Fat %	+0.31	
Protein (%)	+0.23	

FERTILITY		
Calving Int (Days)	-10.6	Daus 0
Survival (%)	+2.9	Herds 0

HEALTH		
Lameness	-0.08	Good
SCC	-0.22	Good
Mastitis (%)	-0.12	Good

MANAGEMENT		
Temperament	-0.25	Below Ave
Milking Speed	-4	Average

CALVING			
	% Rel	Note	
Heifer Calv. Diff	5.4	58	0 Rec
Heifer Calv. Risk		Low	
Cow Calv.	2.2	64	
Dau Calving	0.0	0	
Gest Len (Days)	-3.7	48	
Calf Mort	-0.4	46	

BEEF		
Carcass Wt	-7	Average
Carcass Conf	-1.0	Average

TYPE		
Overall	-0.2	
Udder	0.0	
Feet and Legs	-0.5	

- +0.23% Protein
- Different Sire Lines
- Health Improver

# Lexy PED

(IG)BALLYCAMPON LEXY

Seville x PHC x KYZ  
HB No.: HOLIRLM218845552222

Bred by: John Moloney, Bruff Co Limerick



G1-EBI

A.I. Code: -

78% Hol

aAa: -

Beta Casein: -



Dam of Seville

Genomic, ICBF Jan 2022		
	€	Rel
EBI	€334	55
Production	€118	74
Fertility	€141	42
Calving	€60	55
Beef	€-7	44
Health	€10	63
Maintenance	€8	41
Management	€5	56

PRODUCTION		
Milk (Kg)	-5	Daus 0
Fat (Kg)	17.7	Herds 0
Protein (Kg)	13.7	% Rel 74
Fat %	+0.31	
Protein (%)	+0.24	

FERTILITY		
Calving Int (Days)	-7.8	Daus 0
Survival (%)	+3.5	Herds 0

HEALTH		
Lameness	-0.06	Good
SCC	-0.05	Average
Mastitis (%)	-0.04	Good

MANAGEMENT		
Temperament	-0.04	Average
Milking Speed	-19	Fast

CALVING			
	% Rel	Note	
Heifer Calv. Diff	5.6	60	0 Rec
Heifer Calv. Risk		Low	
Cow Calv.	1.8	63	
Dau Calving	0.0	0	
Gest Len (Days)	-5.3	60	
Calf Mort	-0.6	47	

BEEF		
Carcass Wt	-3	Average
Carcass Conf	-0.6	Average

TYPE		
Overall	-1.9	
Udder	-1.7	
Feet and Legs	-2.0	

- Massive Percentages
- +0.24% Protein
- Over 30lgs Milk Solids

Sire: (IG) CORNASLIEVE VIRGINIA  
Dam: BALLINFANE VINCENT

Dam Yields:							
	Milk Kgs	Fat Kgs	Ptn Kgs	F+P	BFat%	Ptn%	Clv Int
2 Lact	7533	354	288	642	4.70	3.82	372
Ave	6949	323	271	594	4.62	3.90	357
Life (3 Lct)	20846	969	813	1782	4.62	3.90	

G Sire (IG) DERRYLAMOGUE VINCENT  
G Dam BALLINFANE OTL JOJO

	Milk Kgs	Fat Kgs	Ptn Kgs	F+P	BFat%	Ptn%	Clv Int
4 Lact	7745	339	299	638	4.38	3.85	379
Ave	6957	324	262	585	4.67	3.75	374
Life (4 Lct)							

Sire: (IG) DOONMANAGH SEVILLE  
Dam: BALLYCAMPION PHC LOUISE 1956

Dam Yields:							
	Milk Kgs	Fat Kgs	Ptn Kgs	F+P	BFat%	Ptn%	Clv Int
1 Lact	5015	214	197	411	4.27	3.93	NA
Ave	5015	214	197	411	4.27	3.93	NA
Life (1 Lct)	5015	214	197	411	4.27	3.93	

G Sire (IG) KYLETELOGUE MAPLE  
G Dam BALLYCAMPION DEU LOUISE 1044

	Milk Kgs	Fat Kgs	Ptn Kgs	F+P	BFat%	Ptn%	Clv Int
4 Lact	7793	359	305	664	4.60	4.17	352
Ave	6716	290	262	552	4.32	3.90	370
Life (7 Lct)	40297	1739	1572	3144	4.32	3.90	

# Domino PED

(IG)BUNACLOY DOMINO

Seville x Ronaldo x Sherlock

HB No.: HOLIRLM217146794174

Bred by: Mike Magan Longford Co Longford



A.I. Code: FR7913

75% Hol

aAa: -

Beta Casein: -



GDam of Domino

Genomic, ICBF Jan 2022		€		Rel
EBI	€333	56		
Production	€97	75		
Fertility	€170	42		
Calving	€59	56		
Beef	€-7	44		
Health	€10	64		
Maintenance	€4	42		
Management	€0	58		

PRODUCTION			MANAGEMENT		
Milk (Kg)	51	Daus 0	Temperament	0.03	Average
Fat (Kg)	11.1	Herds 0	Milking Speed	3	Average
Protein (Kg)	13.3	% Rel 75	<b>CALVING</b>		
Fat %	+0.16		Heifer Calv. Diff	3.7	61 0 Rec
Protein (%)	+0.20		Heifer Calv. Risk	Low	
<b>FERTILITY</b>			Cow Calv.	2.2	63
Calving Int (Days)	-10.1	Daus 0	Dau Calving	5.4	37
Survival (%)	+3.4	Herds 0	Gest Len (Days)	-5.2	60
<b>HEALTH</b>			Calf Mort	-0.9	47
Lameness	-0.04	Good	<b>BEEF</b>		
SCC	-0.08	Average	Carcass Wt	-2	Average
Mastitis (%)	-0.04	Good	Carcass Conf	-0.5	Average
			<b>TYPE</b>		
			Overall	-1.1	
			Udder	-0.8	
			Feet and Legs	-1.1	

- +0.20% Protein
- Nicely Balanced EBI
- Excellent Total-Package Bull

Sire:	(IG) DOONMANAGH SEVILLE / FR4547						
Dam:	BUNACLOY O RONALDO DALGAN						
Dam Yields:							
	Milk Kgs	Fat Kgs	Ptn Kgs	F+P	BFat%	Ptn%	Clv Int
1 Lact	6071	242	218	460	3.98	3.60	N/A
Ave	6071	242	218	460	3.98	3.60	N/A
Life (1 Lct)	5955	237	214	451	3.98	3.59	
G Sire	(IG) OLCASTLETOWN RONALDO / FR2298						
G Dam	BUNACLOY B SHERLOCK						
	Milk Kgs	Fat Kgs	Ptn Kgs	F+P	BFat%	Ptn%	Clv Int
5 Lact	9666	373	328	701	3.86	3.40	385
Ave	8383	324	295	619	3.87	3.52	370
Life (5 Lct)	41670	1608	1469	3077	3.86	3.53	

# Redadam Red SRM

(IG)HIGHPARK REDADAM SRM

Ronald x SEW Son x Odie

HB No.: HOLIRLM226050351042

Bred by: David Young Kiltegan Co Wicklow



A.I. Code: FR7671

75% Hol

aAa: -

Beta Casein: -



Dam of Redadam

Genomic, ICBF Jan 2022		€		Rel
EBI	€333	50		
Production	€112	68		
Fertility	€156	33		
Calving	€34	54		
Beef	€-10	44		
Health	€25	58		
Maintenance	€18	39		
Management	€-2	55		

PRODUCTION			MANAGEMENT		
Milk (Kg)	48	Daus 0	Temperament	0.09	Average
Fat (Kg)	21.1	Herds 0	Milking Speed	18	Below Ave
Protein (Kg)	12.3	% Rel 68	<b>CALVING</b>		
Fat %	+0.33		Heifer Calv. Diff	5.1	56 0 Rec
Protein (%)	+0.19		Heifer Calv. Risk	Low	
<b>FERTILITY</b>			Cow Calv.	2.4	62
Calving Int (Days)	-9.2	Daus 0	Dau Calving	4.8	34
Survival (%)	+3.2	Herds 0	Gest Len (Days)	-2.3	59
<b>HEALTH</b>			Calf Mort	-0.3	45
Lameness	-0.08	Good	<b>BEEF</b>		
SCC	-0.24	Good	Carcass Wt	-5	Average
Mastitis (%)	-0.11	Good	Carcass Conf	-0.6	Average
			<b>TYPE</b>		
			Overall	-1.0	
			Udder	-0.5	
			Feet and Legs	-1.5	

- Red Holstein Sire
- Super Solids
- +0.19% Protein

Sire:	GLENABOY RONALD / FR4785						
Dam:	HIGHPARK DAME 500						
Dam Yields:							
	Milk Kgs	Fat Kgs	Ptn Kgs	F+P	BFat%	Ptn%	Clv Int
3 Lact	8733	360	302	662	4.12	3.46	368
Ave	7499	318	270	587	4.26	3.62	355
Life (3 Lct)	21480	904	771	1675	4.21	3.59	
G Sire	SEW Son						
G Dam	No. 137						
	Milk Kgs	Fat Kgs	Ptn Kgs	F+P	BFat%	Ptn%	Clv Int
2 Lact	7856	326	303	629	4.15	3.85	324
Ave	7255	304	278	582	4.20	3.83	349
Life (3 Lct)	21269	888	811	1699	4.18	3.81	

# Ballintosig PED

(IG)GREENHILLS BALLINTOSIG

Ring x Vincent x Frank  
HB No.: HOLIRLM215485232287

Bred by: Kevin Clare Jnr Drumconrath Co Meath



Vincent Daughter

G1-EBI

A.I. Code: FR7907

88% Hol

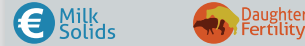
aAa: -  
Beta Casein: -

# Siamsa PED

(IG)BAINNEMORE SIAMSA

Seville x Eimer x Evert  
HB No.: HOLIRLM213359341833

Bred by: Mary C Johnson Killorglin Co. Kerry



Dam of Eimer

G1-EBI

A.I. Code: FR7881

72% Hol

aAa: -  
Beta Casein: -

Genomic, ICBF Jan 2022		
	€	Rel
EBI	€332	59
Production	€88	79
Fertility	€169	46
Calving	€61	51
Beef	€-4	46
Health	€11	67
Maintenance	€7	48
Management	€0	60

PRODUCTION		
Milk (Kg)	111	Daus 0
Fat (Kg)	17.7	Herds 0
Protein (Kg)	10.4	% Rel 79
Fat %	+0.23	
Protein (%)	+0.11	

FERTILITY		
Calving Int (Days)	-9.8	Daus 0
Survival (%)	+3.7	Herds 0

HEALTH		
Lameness	-0.03	Good
SCC	-0.13	Good
Mastitis (%)	-0.04	Good

MANAGEMENT			
Temperament	0.05	Average	
Milking Speed	7	Average	

CALVING			
Heifer Calv. Diff	3.6	56	0 Rec
Heifer Calv. Risk	Low		
Cow Calv.	1.7	63	
Dau Calving	5.1	43	
Gest Len (Days)	-4.9	47	
Calf Mort	-0.9	46	

BEEF			
Carcass Wt	2	Average	
Carcass Conf	-0.6	Average	

TYPE			
Overall	-0.4		
Udder	-0.7		
Feet and Legs	1.4		

- Different Pedigree
- Sire Ring O is one of very highest Daughter Proven Sires
- High Health Index

Sire:	(IG) BALLINTOSIG RING O / OTS						
Dam:	GREENHILLS VINCENT BECKY						
Dam Yields:							
	Milk Kgs	Fat Kgs	Ptn Kgs	F+P	BFat%	Ptn%	Clv Int
4 Lact	8487	320	307	627	3.76	3.62	344
Ave	7660	290	282	572	3.79	3.68	365
Life (4 Lct)	28895	1088	1056	2144	3.77	3.65	
G Sire	(IG) DERRYLAMOGUE VINCENT / FR2036						
G Dam	GREENHILLS OJI BECKY						
	Milk Kgs	Fat Kgs	Ptn Kgs	F+P	BFat%	Ptn%	Clv Int
8 Lact	9203	338	301	639	3.68	3.27	366
Ave	7800	315	273	587	4.06	3.51	365
Life (8 Lct)	61133	2450	2130	4580	4.01	3.48	

Genomic, ICBF Jan 2022		
	€	Rel
EBI	€330	56
Production	€130	76
Fertility	€150	42
Calving	€50	56
Beef	€-15	44
Health	€7	65
Maintenance	€9	41
Management	€-2	58

PRODUCTION		
Milk (Kg)	26	Daus 0
Fat (Kg)	18.0	Herds 0
Protein (Kg)	16.1	% Rel 76
Fat %	+0.29	
Protein (%)	+0.26	

FERTILITY		
Calving Int (Days)	-8.2	Daus 0
Survival (%)	+3.8	Herds 0

HEALTH		
Lameness	-0.04	Good
SCC	-0.04	Average
Mastitis (%)	-0.03	Good

MANAGEMENT			
Temperament	0.11	Average	
Milking Speed	18	Below Ave	

CALVING			
Heifer Calv. Diff	4.4	58	0 Rec
Heifer Calv. Risk	Low		
Cow Calv.	2.2	65	
Dau Calving	5.9	39	
Gest Len (Days)	-4.8	60	
Calf Mort	-0.8	47	

BEEF			
Carcass Wt	-8	Average	
Carcass Conf	-0.7	Average	

TYPE			
Overall	-0.9		
Udder	-0.5		
Feet and Legs	-0.4		

- €130 Production Index
- +0.26% Protein
- High EBI Seville Son

Sire:	(IG) DOONMANAGH SEVILLE / FR4547						
Dam:	BAINNEMORE SUSIE 1604						
Dam Yields:							
	Milk Kgs	Fat Kgs	Ptn Kgs	F+P	BFat%	Ptn%	Clv Int
2 Lact	6037	300	243	543	4.96	4.03	369
Ave	5279	267	212	479	5.07	4.02	369
Life (2 Lct)	9984	495	395	890	4.96	3.96	
G Sire	(IG) NEXTGEN PHC EIMER 557 / FR2460						
G Dam	BAINNEMORE LHZ SUSIE						
	Milk Kgs	Fat Kgs	Ptn Kgs	F+P	BFat%	Ptn%	Clv Int
3 Lact	6531	283	238	521	4.34	3.64	392
Ave	5807	261	215	476	4.48	3.71	448
Life (6 Lct)	31748	1378	1147	2525	4.34	3.61	

# Rummy PED

(IG)GLENLEIGH RUMMY

Seville x PBM x BHZ

HB No.: HOLIRLM217271332817

Bred by: Timothy Leader, Mallow Co Cork



A.I. Code: -

72% Hol

aAa: -

Beta Casein: -



Dam of Seville

Genomic, ICBF Jan 2022		
	€	Rel
EBI	€328	57
Production	€89	77
Fertility	€164	42
Calving	€50	56
Beef	€-6	45
Health	€10	63
Maintenance	€10	41
Management	€10	58

PRODUCTION		
Milk (Kg)	-58	Daus 0
Fat (Kg)	13.5	Herds 0
Protein (Kg)	9.5	% Rel 77
Fat %	+0.28	
Protein (%)	+0.20	

FERTILITY		
Calving Int (Days)	-10.3	Daus 0
Survival (%)	+2.7	Herds 0

HEALTH		
Lameness	-0.04	Good
SCC	-0.07	Average
Mastitis (%)	-0.05	Good

MANAGEMENT		
Temperament	0.10	Average
Milking Speed	-21	Fast

CALVING		
Heifer Calv. Diff	4.2	56 0 Rec
Heifer Calv. Risk	Low	
Cow Calv.	2.0	64
Dau Calving	0.0	0
Gest Len (Days)	-4.6	61
Calf Mort	-0.4	47

BEEF		
Carcass Wt	-2	Average
Carcass Conf	-0.5	Average

TYPE		
Overall	-1.4	
Udder	-1.3	
Feet and Legs	-0.4	

- +0.20% Protein
- Seville son with excellent management traits
- Fast milking with low SCC

Sire:	(IG) DOONMANAGH SEVILLE						
Dam:	GLENLEIGH PBM ROMA 3						
Dam Yields:							
	Milk Kgs	Fat Kgs	Ptn Kgs	F+P	BFat%	Ptn%	Clv Int
4 Lact	8173	353	312	665	4.32	3.82	342
Ave	6993	316	268	584	4.53	3.83	370
G Sire (IG) BALLINABORTA PRIMO							
G Dam GLENLEIGH BHZ ROMA							
	Milk Kgs	Fat Kgs	Ptn Kgs	F+P	BFat%	Ptn%	Clv Int
6 Lact	7007	356	302	658	5.08	4.30	363
Ave	5759	286	240	526	4.94	4.15	367

# Kemboy SRM

(IG)BRIDEPARK KEMBOY SRM

Pivotal x Absolute x Grandeur

HB No.: HOLIRLM216818241233

Bred by: Patrick Ahern Conna Co Cork



A.I. Code: FR7875

78% Hol

aAa: -

Beta Casein: -



Dam of Pivotal

Genomic, ICBF Jan 2022		
	€	Rel
EBI	€326	53
Production	€101	73
Fertility	€136	37
Calving	€60	55
Beef	€-21	44
Health	€23	63
Maintenance	€21	39
Management	€6	57

PRODUCTION		
Milk (Kg)	20	Daus 0
Fat (Kg)	17.6	Herds 0
Protein (Kg)	11.2	% Rel 73
Fat %	+0.29	
Protein (%)	+0.18	

FERTILITY		
Calving Int (Days)	-6.7	Daus 0
Survival (%)	+4.2	Herds 0

HEALTH		
Lameness	-0.10	Good
SCC	-0.12	Good
Mastitis (%)	-0.13	Good

MANAGEMENT		
Temperament	-0.01	Average
Milking Speed	-20	Fast

CALVING		
Heifer Calv. Diff	5.2	57 0 Rec
Heifer Calv. Risk	Low	
Cow Calv.	2.1	63
Dau Calving	5.0	36
Gest Len (Days)	-5.3	60
Calf Mort	-0.9	47

BEEF		
Carcass Wt	-10	Average
Carcass Conf	-0.8	Average

TYPE		
Overall	-0.6	
Udder	1.1	
Feet and Legs	-2.4	

- High Health Genetics
- Moderate Size
- Good Udders

Sire:	(IG) KILFEACLE PIVOTAL / FR428						
Dam:	BRIDEPARK HOLLY 986						
Dam Yields:							
	Milk Kgs	Fat Kgs	Ptn Kgs	F+P	BFat%	Ptn%	Clv Int
2 Lact	7377	331	272	603	4.49	3.68	368
Ave	7105	333	266	599	4.70	3.74	368
Life (2 Lct)	13543	626	497	1123	4.62	3.67	
G Sire JEANJO ABSOLUTE / FR4244							
G Dam BRIDEPARK HOLLY BGI 686							
	Milk Kgs	Fat Kgs	Ptn Kgs	F+P	BFat%	Ptn%	Clv Int
5 Lact	9909	388	342	730	3.92	3.46	366
Ave	8596	379	309	688	4.44	3.61	376
Life (6 Lct)	48090	2135	1732	3867	4.44	3.60	



# Teak PED

G1-EBI

A.I. Code: FR7929

(IG)TANKARDSROCK TEAK

94% Hol

Ring O x Evert x Legend

aAa: -

HB No.: HOLIRLM218058631394

Beta Casein: -

Bred by: Stephen Mcshane Dundalk Co Louth



Dam of teak

Genomic, ICBF Jan 2022		€		Rel
EBI	€323	60		
Production	€109	80		
Fertility	€131	47		
Calving	€54	57		
Beef	€-4	46		
Health	€20	69		
Maintenance	€7	45		
Management	€6	62		

PRODUCTION		
Milk (Kg)	235	Daus 0
Fat (Kg)	20.6	Herds 0
Protein (Kg)	14.9	% Rel 80
Fat %	+0.19	
Protein (%)	+0.12	

FERTILITY		
Calving Int (Days)	-6.4	Daus 0
Survival (%)	+4.1	Herds 0

HEALTH		
Lameness	-0.10	Good
SCC	-0.18	Good
Mastitis (%)	-0.06	Good

MANAGEMENT		
Temperament	-0.02	Average
Milking Speed	-21	Fast

CALVING		
Heifer Calv. Diff	4.2	57 0 Rec
Heifer Calv. Risk	Low	
Cow Calv.	2.0	65
Dau Calving	4.8	44
Gest Len (Days)	-4.1	61
Calf Mort	-0.6	47

BEEF		
Carcass Wt	1	Average
Carcass Conf	-0.7	Average

TYPE		
Overall	-0.3	
Udder	0.0	
Feet and Legs	0.4	

- High EBI Ring O Son
- Over €100 Production
- Bred for Longevity

Sire:	(IG) BALLINTOSIG RING O / OTS						
Dam:	TANKARDSROCK LHZ TWINKLE						
Dam Yields:							
	Milk Kgs	Fat Kgs	Ptn Kgs	F+P	BFat%	Ptn%	Clv Int
3 Lact	8677	410	335	745	4.72	3.86	360
Ave	7490	359	293	652	4.81	3.91	369
Life (6 Lct)	40225	1929	1566	3495	4.80	3.89	
G Sire	(IG) LAURAGH EVERT / LHZ						
G Dam	TANKARDSROCK VGE TWINKLE						
	Milk Kgs	Fat Kgs	Ptn Kgs	F+P	BFat%	Ptn%	Clv Int
5 Lact	9285	479	336	815	5.16	3.62	347
Ave	7916	358	288	646	4.50	3.63	372
Life (5 Lct)	43434	1983	1608	3591	4.57	3.70	

# De Gea PED

G1-EBI

A.I. Code: FR7968

(IG)MYLAWN DE GEA

94% Hol

Mo Salah x Alex x Junction

aAa: -

HB No.: HOLIRLM224914473426

Beta Casein: -

Bred by: Michael Denis Healy, Ovens Co Cork



Dam of Ronaldo, Sire of Mo Salah

Genomic, ICBF Jan 2022		€		Rel
EBI	€322	54		
Production	€95	74		
Fertility	€146	37		
Calving	€52	56		
Beef	€9	40		
Health	€21	63		
Maintenance	€-5	43		
Management	€5	57		

PRODUCTION		
Milk (Kg)	218	Daus 0
Fat (Kg)	18.1	Herds 0
Protein (Kg)	13.1	% Rel 74
Fat %	+0.16	
Protein (%)	+0.10	

FERTILITY		
Calving Int (Days)	-8.8	Daus 0
Survival (%)	+2.8	Herds 0

HEALTH		
Lameness	-0.09	Good
SCC	-0.19	Good
Mastitis (%)	-0.08	Good

MANAGEMENT		
Temperament	0.07	Average
Milking Speed	-6	Average

CALVING		
Heifer Calv. Diff	4.5	57 0 Rec
Heifer Calv. Risk	Low	
Cow Calv.	2.0	68
Dau Calving	4.9	39
Gest Len (Days)	-4.1	59
Calf Mort	-0.4	47

BEEF		
Carcass Wt	7	Heavier
Carcass Conf	-0.7	Average

TYPE		
Overall	-0.4	
Udder	-0.5	
Feet and Legs	0.0	

- Good Milk & Solids
- Excellent Health Index
- Correct Udders & Feet

Sire:	HILLSDALE MO SALAH						
Dam:	MYLAWN PIXIE 2568						
Dam Yields:							
	Milk Kgs	Fat Kgs	Ptn Kgs	F+P	BFat%	Ptn%	Clv Int
2 Lact	8106	362	301	663	4.47	3.71	365
Ave	7373	321	271	592	4.35	3.67	365
Life (3 Lct)	22189	966	816	1782	4.35	3.68	
G Sire	COGENT PEAK ALEX						
G Dam	MY LAWN JUNCTION PIXIE						
	Milk Kgs	Fat Kgs	Ptn Kgs	F+P	BFat%	Ptn%	Clv Int
4 Lact	9158	301	328	629	3.28	3.58	331
Ave	8181	296	290	585	3.61	3.53	362
Life (7 Lct)	53609	1898	1880	3778	3.54	3.51	

# Milton PED

(IG)AGHERNBRIDGE MILTON

Neart x Ace x ZBT

HB No.: HOLIRLM21888322477

Bred by: Michael Joyce, Conna, Co Cork



A.I. Code: -

78% Hol

aAa: -

Beta Casein: -



Daughter of PBM: Sire of Ace

Genomic, ICBF Jan 2022		€		Rel
EBI	€322	53		
Production	€108	0		
Fertility	€164	0		
Calving	€44	0		
Beef	€-17	0		
Health	€13	0		
Maintenance	€18	0		
Management	€-8	0		

PRODUCTION		MANAGEMENT	
Milk (Kg)	27 Daus 0	Temperament	0.00 Average
Fat (Kg)	18.0 Herds 0	Milking Speed	0 Average
Protein (Kg)	12.0 % Rel 0	<b>CALVING</b>	
Fat %	+0.30	Heifer Calv. Diff	4.8 0 0 Rec
Protein (%)	+0.20	Heifer Calv. Risk	0
<b>FERTILITY</b>		Cow Calv.	0.0 0
Calving Int (Days)	-10.0 Daus 0	Dau Calving	0.0 0
Survival (%)	+3.0 Herds 0	Gest Len (Days)	-3.9 0
<b>HEALTH</b>		Calf Mort	0.0 0
Lameness	0.00 Average	<b>BEEF</b>	
SCC	0.00 Average	Carcass Wt	0 Average
Mastitis (%)	0.00 Average	Carcass Conf	0.0 Above Ave
		<b>TYPE</b>	
		Overall	-0.2
		Udder	-0.1
		Feet and Legs	0.4

- +0.20% Protein
- Over €100 Production
- Different Pedigree

Sire:	SCORDUFF NEART / FR4788						
Dam:	/ 37221888391997						
Dam Yields:							
	Milk Kgs	Fat Kgs	Ptn Kgs	F+P	BFat%	Ptn%	Clv Int
3 Lact	7785	353	320	673	4.54	4.11	352
Ave	5877	269	239	508	4.6	4.07	361
Life (3 Lct)	17630	807	718	1525	4.6	4.07	
G Sire KILTESKIN ACE / FR2050							
G Dam IE151617771771							
	Milk Kgs	Fat Kgs	Ptn Kgs	F+P	BFat%	Ptn%	Clv Int
2 Lact	5913	246	226	472	4.15	3.83	NA
Ave	5512	235	209	444	4.27	3.8	NA
Life (2 Lct)	11024	470	418	888	4.27	3.8	

# Sansho PED

(IG)AMBER SANSHO

Mo Salah x Vincent x LHZ

HB No.: HOLIRLM217848022707

Bred by: Glen Chapman, Ferns, Co Wexford



A.I. Code: -

81% Hol

aAa: -

Beta Casein: -



Dam of Sansho

Genomic, ICBF Jan 2022		€		Rel
EBI	€322	53		
Production	€118	74		
Fertility	€153	38		
Calving	€36	51		
Beef	€-13	39		
Health	€16	65		
Maintenance	€12	38		
Management	€-1	59		

PRODUCTION		MANAGEMENT	
Milk (Kg)	194 Daus 0	Temperament	-0.04 Average
Fat (Kg)	13.9 Herds 0	Milking Speed	-1 Average
Protein (Kg)	18.2 % Rel 74	<b>CALVING</b>	
Fat %	+0.11	Heifer Calv. Diff	6.0 58 0 Rec
Protein (%)	+0.20	Heifer Calv. Risk	Low
<b>FERTILITY</b>		Cow Calv.	2.2 64
Calving Int (Days)	-8.6 Daus 0	Dau Calving	0.0 0
Survival (%)	+3.6 Herds 0	Gest Len (Days)	-3.3 48
<b>HEALTH</b>		Calf Mort	-0.3 46
Lameness	-0.11 Good	<b>BEEF</b>	
SCC	-0.04 Average	Carcass Wt	-5 Average
Mastitis (%)	-0.08 Good	Carcass Conf	-0.9 Average
		<b>TYPE</b>	
		Overall	0.8
		Udder	1.0
		Feet and Legs	0.6

- Massive Percentages
- Over 30 kgs Milk Solids
- Correct Udders

Sire:	HILLSDALE MO SALAH						
Dam:	HOLIRLF214976980998						
Dam Yields:							
	Milk Kgs	Fat Kgs	Ptn Kgs	F+P	BFat%	Ptn%	Clv Int
2 Lact	7930	298	307	605	3.76	3.87	384
Ave	7924	332	297	628		3.79	384
Life (2 Lct)	0	0	0	0	0.00	0.00	
G Sire (IG) DERRYLAMOGUE VINCENT							
G Dam HOLIRLF371477330832							
	Milk Kgs	Fat Kgs	Ptn Kgs	F+P	BFat%	Ptn%	Clv Int
2 Lact	8634	348	285	633	4.03	3.30	385
Ave	7149	286	235	521	4.00	3.28	385
Life (2 Lct)							

**Eli** SRM

G1-EBI

A.I. Code: **FR7890**

81% Hol

aAa: -  
Beta Casein: -

(IG)MONAVRIN ELI SRM

Dandyman x Prince x Evert  
HB No.: **HOLIRLM216995291325**

Bred by: Michael Roche, Kinsale Co Cork



Dandyman Daughter

Genomic, ICBF Jan 2022		
	€	Rel
EBI	€320	59
Production	€110	79
Fertility	€142	45
Calving	€55	57
Beef	€-22	46
Health	€10	65
Maintenance	€26	43
Management	€-1	58

PRODUCTION		
Milk (Kg)	66	Daus 0
Fat (Kg)	19.5	Herds 0
Protein (Kg)	12.7	% Rel 79
Fat %	+0.29	
Protein (%)	+0.18	

FERTILITY		
Calving Int (Days)	-8.1	Daus 0
Survival (%)	+3.3	Herds 0

HEALTH		
Lameness	-0.06	Good
SCC	-0.04	Average
Mastitis (%)	-0.05	Good

MANAGEMENT		
Temperament	-0.06	Average
Milking Speed	-5	Average

CALVING		
Heifer Calv. Diff	4.5	58 0 Rec
Heifer Calv. Risk	Low	
Cow Calv.	1.8	65
Dau Calving	4.7	40
Gest Len (Days)	-4.3	61
Calf Mort	-0.3	47

BEEF		
Carcass Wt	-10	Average
Carcass Conf	-0.6	Average

TYPE		
Overall	-2.2	
Udder	-1.7	
Feet and Legs	-1.6	

- €110 Production
- High Maintenance Index
- High EBI Dandyman Son

Sire:	(IG) CLORANE DANDYMAN / FR4600						
Dam:	MONAVRIN ELLA 993						
Dam Yields:							
	Milk Kgs	Fat Kgs	Ptn Kgs	F+P	BFat%	Ptn%	Clv Int
4 Lact	8253	405	329	734	4.90	3.98	357
Ave	7451	367	291	659	4.94	3.91	368
Life (4 Lct)	28929	1408	1123	2531	4.87	3.88	
G Sire	(IG) CONNIBAR PRINCE / PCZ						
G Dam	MONAVRIN ELLA 804						
	Milk Kgs	Fat Kgs	Ptn Kgs	F+P	BFat%	Ptn%	Clv Int
5 Lact	8082	373	304	677	4.62	3.76	398
Ave	7373	343	274	617	4.67	3.71	365
Life (7 Lct)	49952	2303	1848	4151	4.61	3.70	

**Zak** PED

G1-EBI

A.I. Code: **FR7986**

88% Hol

aAa: -  
Beta Casein: -

(IG)GLENREA ZAK

Olympus x Reliable x Hubbard  
HB No.: **HOLIRLM219366292910**

Bred by: Martin Kennedy, Kildinan Co Cork



LWR Daughter

Genomic, ICBF Jan 2022		
	€	Rel
EBI	€320	51
Production	€98	70
Fertility	€158	36
Calving	€53	55
Beef	€-9	40
Health	€22	62
Maintenance	€1	38
Management	€-4	55

PRODUCTION		
Milk (Kg)	187	Daus 0
Fat (Kg)	17.1	Herds 0
Protein (Kg)	13.5	% Rel 70
Fat %	+0.17	
Protein (%)	+0.12	

FERTILITY		
Calving Int (Days)	-8.8	Daus 0
Survival (%)	+3.8	Herds 0

HEALTH		
Lameness	-0.07	Good
SCC	-0.19	Good
Mastitis (%)	-0.11	Good

MANAGEMENT		
Temperament	-0.17	Below Ave
Milking Speed	-8	Average

CALVING		
Heifer Calv. Diff	4.5	60 0 Rec
Heifer Calv. Risk	Low	
Cow Calv.	1.9	63
Dau Calving	5.3	37
Gest Len (Days)	-4.3	60
Calf Mort	-0.9	47

BEEF		
Carcass Wt	-1	Average
Carcass Conf	-1.0	Below Ave

TYPE		
Overall	1.7	
Udder	1.6	
Feet and Legs	1.2	

- High EBI Olympus Son
- Excellent Daughter Fertility & Good Production
- Health Improver

Sire:	HANRAHAN OLYMPUS / FR5239						
Dam:	GLENREA LWR CANDY 4						
Dam Yields:							
	Milk Kgs	Fat Kgs	Ptn Kgs	F+P	BFat%	Ptn%	Clv Int
1 Lact	7450	276	253	529	3.70	3.39	NA
Ave	7450	276	253	529	3.70	3.39	NA
Life (1 Lct)	7402	274	251	525	3.70	3.39	
G Sire	(IG) LONGVIEW RELIABLE / LWR						
G Dam	GLENREA HUBBARD CANDY						
	Milk Kgs	Fat Kgs	Ptn Kgs	F+P	BFat%	Ptn%	Clv Int
3 Lact	8360	372	296	668	4.45	3.54	389
Ave	7394	342	267	610	4.66	3.62	383
Life (3 Lct)	20156	921	721	1642	4.57	3.58	

# Cappa SRM

(IG)KILLALOUGH CAPPAS SRM

Sexton x Waterford x Reeks

HB No.: HOLIRLM224229552931

Bred by: John Ahern, Glanmire Co Cork



G1-EBI

A.I. Code: FR7953

78% Hol

aAa: -

Beta Casein: -



Dam of Sexton

Genomic, ICBF Jan 2022		
	€	Rel
EBI	€319	53
Production	€102	73
Fertility	€149	37
Calving	€36	54
Beef	€-13	39
Health	€26	62
Maintenance	€19	42
Management	€0	57

PRODUCTION		
Milk (Kg)	-26	Daus 0
Fat (Kg)	20.9	Herds 0
Protein (Kg)	9.6	% Rel 73
Fat %	+0.38	
Protein (%)	+0.18	

FERTILITY		
Calving Int (Days)	-8.1	Daus 0
Survival (%)	+3.7	Herds 0

HEALTH		
Lameness	-0.06	Good
SCC	-0.25	Good
Mastitis (%)	-0.13	Good

MANAGEMENT		
Temperament	-0.01	Average
Milking Speed	-2	Average

CALVING		
Heifer Calv. Diff	6.5	50 0 Rec
Heifer Calv. Risk	Moderate	
Cow Calv.	2.5	62
Dau Calving	5.5	37
Gest Len (Days)	-3.7	60
Calf Mort	-0.2	44

BEEF		
Carcass Wt	-7	Average
Carcass Conf	-0.7	Average

TYPE		
Overall	-1.2	
Udder	-0.7	
Feet and Legs	-1.6	

- Sexton Son: Different Pedigree
- 4% Protein Dam
- High Health Index

# Zakery SRM

(IG)STAMULLEN ZAKERY SRM

Stark x Lochinar x Hugo

HB No.: HOLIRLM224757423457

Bred by: Brendan Meade Stamullen Co Meath



G1-EBI

A.I. Code: FR7926

75% Hol

aAa: -

Beta Casein: -



Dam of Zakery

Genomic, ICBF Jan 2022		
	€	Rel
EBI	€319	53
Production	€105	74
Fertility	€149	37
Calving	€42	56
Beef	€-16	41
Health	€12	62
Maintenance	€27	38
Management	€1	56

PRODUCTION		
Milk (Kg)	26	Daus 0
Fat (Kg)	17.7	Herds 0
Protein (Kg)	12.1	% Rel 74
Fat %	+0.29	
Protein (%)	+0.19	

FERTILITY		
Calving Int (Days)	-9.1	Daus 0
Survival (%)	+2.7	Herds 0

HEALTH		
Lameness	-0.04	Good
SCC	-0.09	Average
Mastitis (%)	-0.06	Good

MANAGEMENT		
Temperament	0.02	Average
Milking Speed	0	Average

CALVING		
Heifer Calv. Diff	6.0	52 0 Rec
Heifer Calv. Risk	Low	
Cow Calv.	2.6	64
Dau Calving	4.9	37
Gest Len (Days)	-3.8	61
Calf Mort	-0.3	47

BEEF		
Carcass Wt	-7	Average
Carcass Conf	-0.6	Average

TYPE		
Overall	-0.2	
Udder	-0.2	
Feet and Legs	-1.4	

- High EBI Stark Son
- Different Pedigree
- Moderate Size

Sire:	KNOCKREAGH SEXTON SRM / FR6049						
Dam:	KILLALOUGH FR4206 NORAH						
Dam Yields:							
	Milk Kgs	Fat Kgs	Ptn Kgs	F+P	BFat%	Ptn%	Clv Int
2 Lact	6052	290	245	535	4.79	4.05	379
Ave	6007	278	241	519	4.62	4.01	379
Life (2 Lct)	12189	568	491	1059	4.66	4.03	
G Sire	BALLYBRIDE WATERFORD / FR4206						
G Dam	KILLALOUGH GZY NORAH						
	Milk Kgs	Fat Kgs	Ptn Kgs	F+P	BFat%	Ptn%	Clv Int
3 Lact	6613	296	265	561	4.47	4.01	356
Ave	5606	261	228	489	4.67	4.07	363
Life (4 Lct)	22782	1066	932	1998	4.68	4.09	

Sire:	(IG) HIGHMOUNT STARK / FR5803						
Dam:	STAMULLEN REBECCA B 1942						
Dam Yields:							
	Milk Kgs	Fat Kgs	Ptn Kgs	F+P	BFat%	Ptn%	Clv Int
6 Lact	7370	379	320	699	5.14	4.35	351
Ave	6268	330	263	592	5.27	4.19	363
Life (8 Lct)	48740	2544	2034	4578	5.22	4.17	
G Sire	HSS VHA LOCHINVAR-ET S3F						
G Dam	STAMULLEN REBECCA B1168						
	Milk Kgs	Fat Kgs	Ptn Kgs	F+P	BFat%	Ptn%	Clv Int
8 Lact	7311	372	275	647	5.09	3.76	366
Ave	5953	291	229	521	4.89	3.85	366
Life (9 Lct)	48986	2359	1864	4223	4.82	3.81	

# Trotter PED

(IG)BALLYGOWN TROTTER

Ring O x Boycie x Mick  
HB No.: HOLIRLM218391252253

Bred by: Seamu Knox, Piltown, Co Kilkenny



A.I. Code: -

91% Hol

aAa: -  
Beta Casein: -



GDam of Ring O

Genomic, ICBF Jan 2022		
	€	Rel
EBI	€318	57
Production	€91	76
Fertility	€156	44
Calving	€61	51
Beef	€-9	46
Health	€8	67
Maintenance	€15	48
Management	€-3	61

PRODUCTION		
Milk (Kg)	113	Daus 0
Fat (Kg)	15.7	Herds 0
Protein (Kg)	11.6	% Rel 76
Fat %	+0.19	
Protein (%)	+0.13	
FERTILITY		
Calving Int (Days)	-8.9	Daus 0
Survival (%)	+3.6	Herds 0
HEALTH		
Lameness	-0.07	Average
SCC	-0.05	Average
Mastitis (%)	-0.01	Average

MANAGEMENT		
Temperament	-0.17	Average
Milking Speed	-9	Average
CALVING		
Heifer Calv. Diff	3.5	57 0 Rec
Heifer Calv. Risk	Low	
Cow Calv.	2.0	63
Dau Calving	4.9	43
Gest Len (Days)	-4.7	46
Calf Mort	-0.5	47
BEEF		
Carcass Wt	-8	Average
Carcass Conf	-0.7	Above Ave
TYPE		
Overall	0.2	
Udder	-0.1	
Feet and Legs	0.4	

- High Ranking Ring O Son
- Balanced EBI
- Correct Type

Sire:	(IG) BALLINTOSIG RING O / OTS						
Dam:	BALLYGOWN 4242 MELBA 1849						
Dam Yields:							
	Milk Kgs	Fat Kgs	Ptn Kgs	F+P	BFat%	Ptn%	Clv Int
1 Lact	5657	243	202	445	4.3	3.58	NA
Ave	5657	243	202	445	4.3	3.58	NA
Life (1 Lct)	6289	273	228	501	4.34	3.63	
G Sire	BALLYGOWN YRY BOYCIE / FR4242						
G Dam	BALLYGOWN 1236 MELBA 1525						
	Milk Kgs	Fat Kgs	Ptn Kgs	F+P	BFat%	Ptn%	Clv Int
2 Lact	5265	247	207	454	4.7	3.92	330
Ave	5171	246	202	448	4.76	3.89	330
Life (2 Lct)	9071	424	346	770	4.67	3.81	

# Kew SRM

(IG)BRANDY KEW SRM

Supreme x Larry x Harold  
HB No.: HOLIRLM219463081231

Bred by: Francis Stafford Kilmore Co Wexford



A.I. Code: FR7884

75% Hol

aAa: -  
Beta Casein: -



Dam of Kew

Genomic, ICBF Jan 2022		
	€	Rel
EBI	€318	58
Production	€107	78
Fertility	€155	44
Calving	€49	56
Beef	€-14	45
Health	€11	66
Maintenance	€11	44
Management	€-1	60

PRODUCTION		
Milk (Kg)	11	Daus 0
Fat (Kg)	17.9	Herds 0
Protein (Kg)	12.0	% Rel 78
Fat %	+0.30	
Protein (%)	+0.20	
FERTILITY		
Calving Int (Days)	-9.3	Daus 0
Survival (%)	+3.1	Herds 0
HEALTH		
Lameness	-0.08	Good
SCC	0.01	Average
Mastitis (%)	-0.07	Good

MANAGEMENT		
Temperament	-0.10	Below Ave
Milking Speed	-10	Average
CALVING		
Heifer Calv. Diff	6.1	56 0 Rec
Heifer Calv. Risk	Low	
Cow Calv.	2.4	65
Dau Calving	4.8	38
Gest Len (Days)	-4.4	60
Calf Mort	-0.5	47
BEEF		
Carcass Wt	-7	Average
Carcass Conf	-0.8	Average
TYPE		
Overall	-0.5	
Udder	-0.4	
Feet and Legs	0.1	

- Supreme Son
- +0.20% Protein
- Bred from Really Good Uddered, 4% Protein Dam

Sire:	(IG) SPRINGHAVEN SUPREME / FR4482						
Dam:	BRANDY FR2057 AINE						
Dam Yields:							
	Milk Kgs	Fat Kgs	Ptn Kgs	F+P	BFat%	Ptn%	Clv Int
3 Lact	7237	323	292	615	4.46	4.04	361
Ave	6327	283	255	538	4.48	4.03	358
Life (3 Lct)	18729	832	752	1584	4.44	4.02	
G Sire	(IG) FINNVALLEY LARRY / FR2057						
G Dam	BRANDY CHQ AINE 2						
	Milk Kgs	Fat Kgs	Ptn Kgs	F+P	BFat%	Ptn%	Clv Int
4 Lact	7727	373	293	666	4.83	3.80	331
Ave	6780	326	264	590	4.81	3.89	357
Life (7 Lct)	47275	2269	1839	4108	4.80	3.89	

# Gem SRM

G1-EBI

A.I. Code: **FR8073**

(IG)CASTLEPOLARD GEM SRM

78% Hol

Dandyman x Norman x Evert

aAa: -

HB No.: **HOLIRLM223769021064**

Beta Casein: -

Bred by: Seamus O'Reilly, Castlepollard Co Westmeath



Dam of Gem

Genomic, ICBF Jan 2022		
	€	Rel
EBI	€317	58
Production	€114	75
Fertility	€135	46
Calving	€55	56
Beef	€-19	45
Health	€12	66
Maintenance	€25	43
Management	€-5	59

PRODUCTION			MANAGEMENT		
Milk (Kg)	228	Daus 0	Temperament	0.00	Average
Fat (Kg)	20.0	Herds 0	Milking Speed	0	Average
Protein (Kg)	16.0	% Rel 75	CALVING		
Fat %	+0.18		Heifer Calv. Diff	4.5	61 0 Rec
Protein (%)	+0.14		Heifer Calv. Risk	0	
FERTILITY			Cow Calv.	1.9	64
Calving Int (Days)	-7.8	Daus 0	Dau Calving	0.0	0
Survival (%)	+3.0	Herds 0	Gest Len (Days)	-5.0	60
HEALTH			Calf Mort	0.0	0
Lameness	-0.04	Good	BEEF		
SCC	-0.09	Average	Carcass Wt	0	Average
Mastitis (%)	-0.06	Good	Carcass Conf	0.0	Above Ave
TYPE			Overall	-1.6	
Udder	-1.5		Feet and Legs	-1.9	

- High EBI Dandyman Son
- High Maintenance Index
- Good Health Index

Sire:	(IG) CLORANE DANDYMAN / FR4600						
Dam:	CASTLEPOLARD GEMMA 966						
Dam Yields:							
	Milk Kgs	Fat Kgs	Ptn Kgs	F+P	BFat%	Ptn%	Clv Int
1 Lact	5588	238	202	440	4	3.62	N/A
Ave	5588	238	202	440	4	3.62	N/A
Life (1 Lct)	5693	243	206	449	4	3.62	
G Sire	(IG) KEALFINCHEON NORMAN / FR2005						
G Dam	CASTLEPOLARD LHZ GEMMA						
	Milk Kgs	Fat Kgs	Ptn Kgs	F+P	BFat%	Ptn%	Clv Int

# Fourelms SRM

G1-EBI

A.I. Code: **FR7920**

(IG)KILCLAREEN FOURELMS SRM

81% Hol

Esmonde x Reliable x Keet

aAa: -

HB No.: **HOLIRLM217194871622**

Beta Casein: -

Bred by: Michael G Delaney Templemore Co Tipperary



Dam of Fourelms

Genomic, ICBF Jan 2022		
	€	Rel
EBI	€315	53
Production	€122	74
Fertility	€131	37
Calving	€38	55
Beef	€-1	40
Health	€3	62
Maintenance	€13	39
Management	€7	56

PRODUCTION			MANAGEMENT		
Milk (Kg)	94	Daus 0	Temperament	0.08	Average
Fat (Kg)	22.7	Herds 0	Milking Speed	-13	Fast
Protein (Kg)	14.2	% Rel 74	CALVING		
Fat %	+0.33		Heifer Calv. Diff	6.6	53 0 Rec
Protein (%)	+0.19		Heifer Calv. Risk	Moderate	
FERTILITY			Cow Calv.	2.5	64
Calving Int (Days)	-7.5	Daus 0	Dau Calving	5.3	36
Survival (%)	+2.9	Herds 0	Gest Len (Days)	-3.6	61
HEALTH			Calf Mort	-0.5	47
Lameness	0.01	Average	BEEF		
SCC	-0.02	Average	Carcass Wt	0	Average
Mastitis (%)	-0.04	Good	Carcass Conf	-0.5	Average
TYPE			Overall	-1.3	
Udder	-1.2		Feet and Legs	-0.8	

- Over 120 Production
- High EBI Esmonde Son
- 4% Protein Dam with over 760 kgs Solids

Sire:	(IG) RATHLANNON ESMONDE SRM / FR5530						
Dam:	KILCLAREEN LWR MOLLY 1106						
Dam Yields:							
	Milk Kgs	Fat Kgs	Ptn Kgs	F+P	BFat%	Ptn%	Clv Int
4 Lact	9313	395	371	766	4.24	3.98	332
Ave	7736	345	308	652	4.51	3.97	365
Life (4 Lct)	31322	1401	1250	2651	4.47	3.99	
G Sire	(IG) LONGVIEW RELIABLE / LWR						
G Dam	KILCLAREEN GYK MOLLY						
	Milk Kgs	Fat Kgs	Ptn Kgs	F+P	BFat%	Ptn%	Clv Int
3 Lact	7721	332	289	621	4.29	3.75	370
Ave	6995	306	262	568	4.39	3.75	364
Life (9 Lct)	61454	2678	2290	4968	4.36	3.73	

# Nifty PED

(IG)VICISLAND NIFTY

Stark x Albert x Harold  
HB No.: HOLIRLM218276721894  
Bred by: Alan O Sullivan, Vicarstown Co Cork



A.I. Code: FR7944

78% Hol

aAa: -  
Beta Casein: -



Dam of Stark

Genomic, ICBF Jan 2022		€		Rel	0% 10% 20% 30% 40% 50% 60% 70% 80% 90% 100%				
EBI		€313		51	[Bar chart showing 51% relative value]				
Production		€121		70	[Bar chart showing 70% relative value]				
Fertility		€119		35	[Bar chart showing 35% relative value]				
Calving		€48		54	[Bar chart showing 54% relative value]				
Beef		€-3		39	[Bar chart showing 39% relative value]				
Health		€8		60	[Bar chart showing 60% relative value]				
Maintenance		€18		38	[Bar chart showing 38% relative value]				
Management		€3		55	[Bar chart showing 55% relative value]				

PRODUCTION			MANAGEMENT		
Milk (Kg)	213	Daus 0	Temperament	0.14	Average
Fat (Kg)	20.4	Herds 0	Milking Speed	7	Average
Protein (Kg)	16.6	% Rel 70	CALVING		
Fat %	+0.20		Heifer Calv. Diff	5.3	53 0 Rec
Protein (%)	+0.16		Heifer Calv. Risk	Low	
FERTILITY			Cow Calv.	2.2	62
Calving Int (Days)	-6.2	Daus 0	Dau Calving	4.9	33
Survival (%)	+3.3	Herds 0	Gest Len (Days)	-3.8	60
HEALTH			Calf Mort	-0.7	46
Lameness	-0.02	Average	BEEF		
SCC	-0.10	Good	Carcass Wt	-1	Average
Mastitis (%)	-0.03	Good	Carcass Conf	-0.4	Above Ave
TYPE			Overall	-1.1	
			Udder	-1.1	
			Feet and Legs	-1.5	

- Stark Son with over 120 Production
- Over 35 kgs Milk Solids
- +20Kgs Fat

Sire:	(IG) HIGHMOUNT STARK / FR5803
Dam:	VICISLAND FR4513 STELLA 1570
Dam Yields:	
	Milk Kgs   Fat Kgs   Ptn Kgs   F+P   BFat%   Ptn%   Clv Int
1 Lact	5459   282   206   488   5.16   3.78   N/A
Ave	5459   282   206   488   5.16   3.78   N/A
Life (1 Lct)	5100   260   190   450   5.10   3.73
G Sire	(IG) BALLYGOWN ALBERT / FR4513
G Dam	VICISLAND FR2233 STELLA 1337
	Milk Kgs   Fat Kgs   Ptn Kgs   F+P   BFat%   Ptn%   Clv Int
3 Lact	7091   371   273   644   5.23   3.86   362
Ave	6294   303   249   552   4.79   3.96   367
Life (3 Lct)	18623   893   733   1626   4.80   3.94

G1-EBI

# Redcliff Red PED

(IG)DOONMANAGH REDCLIFF

Ronald x Perseus x DEU  
HB No.: HOLIRLM214299411513  
Bred by: John P Galvin Lispolo Co Kerry



A.I. Code: FR7860

81% Hol

aAa: -  
Beta Casein: -



GDam of Redcliff

Genomic, ICBF Jan 2022		€		Rel	0% 10% 20% 30% 40% 50% 60% 70% 80% 90% 100%				
EBI		€313		51	[Bar chart showing 51% relative value]				
Production		€111		67	[Bar chart showing 67% relative value]				
Fertility		€125		37	[Bar chart showing 37% relative value]				
Calving		€44		51	[Bar chart showing 51% relative value]				
Beef		€1		44	[Bar chart showing 44% relative value]				
Health		€22		63	[Bar chart showing 63% relative value]				
Maintenance		€9		39	[Bar chart showing 39% relative value]				
Management		€1		57	[Bar chart showing 57% relative value]				

PRODUCTION			MANAGEMENT		
Milk (Kg)	156	Daus 0	Temperament	-0.14	Below Ave
Fat (Kg)	20.9	Herds 0	Milking Speed	-18	Fast
Protein (Kg)	13.9	% Rel 67	CALVING		
Fat %	+0.25		Heifer Calv. Diff	5.9	57 0 Rec
Protein (%)	+0.15		Heifer Calv. Risk	Low	
FERTILITY			Cow Calv.	2.3	65
Calving Int (Days)	-6.8	Daus 0	Dau Calving	4.5	37
Survival (%)	+3.2	Herds 0	Gest Len (Days)	-3.5	48
HEALTH			Calf Mort	-0.2	46
Lameness	-0.08	Good	BEEF		
SCC	-0.22	Good	Carcass Wt	2	Average
Mastitis (%)	-0.08	Good	Carcass Conf	-0.6	Average
TYPE			Overall	0.4	
			Udder	1.0	
			Feet and Legs	-1.2	

- Red Holstein Sire
- Nice Udders
- Excellent Health

Sire:	GLENABOY RONALD / FR4785
Dam:	DOONMANAGH 4187 CHERRY 2
Dam Yields:	
	Milk Kgs   Fat Kgs   Ptn Kgs   F+P   BFat%   Ptn%   Clv Int
1 Lact	5462   259   212   471   4.74   3.89   N/A
Ave	5462   259   212   471   4.74   3.89   N/A
Life (1 Lct)	5420   257   210   467   4.74   3.87
G Sire	WESTCOAST PERSEUS / FR4187
G Dam	DOONMANAGH DEU CHERRY
	Milk Kgs   Fat Kgs   Ptn Kgs   F+P   BFat%   Ptn%   Clv Int
5 Lact	7614   340   285   625   4.46   3.74   371
Ave	6497   296   242   538   4.56   3.72   411
Life (9 Lct)	56724   2622   2139   4761   4.62   3.77

# Karma SRM

(IG)KILLALOUGH KARMA SRM

Sergi x Waterford x Grand

HB No.: HOLIRLM224229562800

Bred by: John Ahern Glanmire Co Cork



A.I. Code: **FR7878**

75% Hol

aAa: -

Beta Casein: -



Dam of Sergi

Genomic, ICBF Jan 2022		€	Rel	0% 10% 20% 30% 40% 50% 60% 70% 80% 90% 100%					
<b>EBI</b>		€311	51	[Bar chart showing EBI value]					
Production		€92	72	[Bar chart showing Production value]					
Fertility		€143	35	[Bar chart showing Fertility value]					
Calving		€51	49	[Bar chart showing Calving value]					
Beef		€-17	40	[Bar chart showing Beef value]					
Health		€25	61	[Bar chart showing Health value]					
Maintenance		€15	42	[Bar chart showing Maintenance value]					
Management		€3	57	[Bar chart showing Management value]					

PRODUCTION			MANAGEMENT		
Milk (Kg)	-99	Daus 0	Temperament	-0.05	Average
Fat (Kg)	16.1	Herds 0	Milking Speed	-15	Fast
Protein (Kg)	8.4	% Rel 72	<b>CALVING</b>		
Fat %	+0.35		Heifer Calv. Diff	4.9	54 0 Rec
Protein (%)	+0.21		Heifer Calv. Risk	Low	
<b>FERTILITY</b>			Cow Calv.	1.7	62
Calving Int (Days)	-7.5	Daus 0	Dau Calving	5.5	34
Survival (%)	+3.9	Herds 0	Gest Len (Days)	-4.6	48
<b>HEALTH</b>			Calf Mort	0.1	45
Lameness	-0.09	Good	<b>BEEF</b>		
SCC	-0.17	Good	Carcass Wt	-10	Average
Mastitis (%)	-0.14	Good	Carcass Conf	-0.6	Average
			<b>TYPE</b>		
			Overall	-0.6	
			Udder	-0.5	
			Feet and Legs	-0.2	

- +0.21% Protein
- Sergi Son
- Different Sire Lines

Sire:	(IG) STONEPARK SERGI SRM / FR5515						
Dam:	KILLALOUGH WATERFORD MONICA						
Dam Yields:							
	Milk Kgs	Fat Kgs	Ptn Kgs	F+P	BFat%	Ptn%	Clv Int
1 Lact	5794	286	223	509	4.93	3.84	344
Ave	5631	274	224	498	4.86	3.98	344
Life (2 Lct)	11473	561	458	1019	4.89	3.99	
G Sire	BALLYBRIDE WATERFORD / FR4206						
G Dam	KILLALOUGH GRAND MONICA						
	Milk Kgs	Fat Kgs	Ptn Kgs	F+P	BFat%	Ptn%	Clv Int
4 Lact	6891	327	275	602	4.75	3.99	404
Ave	6270	296	251	547	4.71	4.01	379
Life (4 Lct)	25085	1180	1003	2183	4.70	4.00	

G1-EBI

# Zaki PED

(IG)GREENFORT ZAKI

Harold x Harry x Piper

HB No.: HOLIRLM214573681979

Bred by: Declan Walsh Mallow Co Cork



G1-EBI

A.I. Code: **FR7851**

84% Hol

aAa: -

Beta Casein: -



Darold Daughter

Genomic, ICBF Jan 2022		€	Rel	0% 10% 20% 30% 40% 50% 60% 70% 80% 90% 100%					
<b>EBI</b>		€310	60	[Bar chart showing EBI value]					
Production		€117	79	[Bar chart showing Production value]					
Fertility		€142	48	[Bar chart showing Fertility value]					
Calving		€55	56	[Bar chart showing Calving value]					
Beef		€-13	46	[Bar chart showing Beef value]					
Health		€8	68	[Bar chart showing Health value]					
Maintenance		€10	46	[Bar chart showing Maintenance value]					
Management		€-10	60	[Bar chart showing Management value]					

PRODUCTION			MANAGEMENT		
Milk (Kg)	53	Daus 0	Temperament	-0.27	Below Ave
Fat (Kg)	19.8	Herds 0	Milking Speed	0	Average
Protein (Kg)	13.8	% Rel 79	<b>CALVING</b>		
Fat %	+0.31		Heifer Calv. Diff	4.5	56 0 Rec
Protein (%)	+0.21		Heifer Calv. Risk	Low	
<b>FERTILITY</b>			Cow Calv.	2.2	63
Calving Int (Days)	-8.0	Daus 0	Dau Calving	5.4	47
Survival (%)	+3.4	Herds 0	Gest Len (Days)	-5.2	59
<b>HEALTH</b>			Calf Mort	0.1	47
Lameness	-0.06	Good	<b>BEEF</b>		
SCC	-0.01	Average	Carcass Wt	-4	Average
Mastitis (%)	-0.04	Good	Carcass Conf	-0.8	Average
			<b>TYPE</b>		
			Overall	-1.1	
			Udder	0.1	
			Feet and Legs	-1.9	

- +0.21% Protein
- Harold x Harry: Different Pedigree
- Excellent Fertility & Correct Udders

Sire:	(IG) TAMARIU HAROLD / FR2233						
Dam:	GREENFORT HARRY CAROL						
Dam Yields:							
	Milk Kgs	Fat Kgs	Ptn Kgs	F+P	BFat%	Ptn%	Clv Int
4 Lact	6556	320	260	580	4.88	3.97	359
Ave	5969	292	237	529	4.91	3.98	366
Life (4 Lct)	24219	1190	966	2156	4.91	3.99	
G Sire	(IG) OAKGLEN HARRY / FR2032						
G Dam	GREENFORT PIPER CAROL						
	Milk Kgs	Fat Kgs	Ptn Kgs	F+P	BFat%	Ptn%	Clv Int
6 Lact	7056	311	268	579	4.41	3.80	378
Ave	6193	276	236	512	4.46	3.82	440
Life (6 Lct)	40704	1853	1594	3447	4.55	3.92	



# Ginobili PED

(IG) LAKESTONE GINOBILI

Virginia x Harold x Mango  
HB No.: HOLIRLM215483722178

Bred by: Kieran Curtin, Bandon Co Cork



Harold Daughter

Genomic, ICBF Jan 2022		
	€	Rel
EBI	€300	54
Production	€108	73
Fertility	€136	38
Calving	€53	56
Beef	€-9	42
Health	€9	63
Maintenance	€5	39
Management	€-1	57

PRODUCTION		
Milk (Kg)	114	Daus 0
Fat (Kg)	18.0	Herds 0
Protein (Kg)	14.0	% Rel 73
Fat %	+0.23	
Protein (%)	+0.17	

FERTILITY		
Calving Int (Days)	-7.7	Daus 0
Survival (%)	+3.2	Herds 0

HEALTH		
Lameness	-0.06	Good
SCC	-0.02	Average
Mastitis (%)	-0.05	Good

MANAGEMENT		
Temperament	0.00	Average
Milking Speed	0	Average

CALVING		
Heifer Calv. Diff	4.4	57 0 Rec
Heifer Calv. Risk	0	
Cow Calv.	2.4	65
Dau Calving	0.0	0
Gest Len (Days)	-4.5	60
Calf Mort	0.0	0

BEEF		
Carcass Wt	0	Average
Carcass Conf	0.0	Above Ave

TYPE		
Overall	-1.8	
Udder	-1.2	
Feet and Legs	-1.9	

- Different Sire Lines
- Balanced EBI
- +0.17% Protein

Sire:	(IG) CORNASLIEVE VIRGINIA						
Dam:	LAKESTONE PAULA 1726						
Dam Yields:							
	Milk Kgs	Fat Kgs	Ptn Kgs	F+P	BFat%	Ptn%	Clv Int
3 Lact	7145	324	294	618	4.53	4.12	355
Ave	6324	282	261	543	4.46	4.12	335
Life (3 Lct)	17986	790	734	1524	4.39	4.08	
G Sire	(IG) TAMARIU HAROLD						
G Dam	LAKESTONE PAULA 977						
	Milk Kgs	Fat Kgs	Ptn Kgs	F+P	BFat%	Ptn%	Clv Int
5 Lact	7083	304	247	551	4.29	3.49	356
Ave	6361	265	227	492	4.17	3.57	362
Life (9 Lct)	56353	2344	2006	4350	4.16	3.56	

G1-EBI

A.I. Code: FR8013

88% Hol

aAa: -  
Beta Casein: -

# Hermosa PED

(IG) WARRENFARM HERMOSA

Joker x Reliable x Oman  
HB No.: HOLIRLM218260943408

Bred by: Richard O'Neill Ballymacoda Co Cork



Dam of Joker

Genomic, ICBF Jan 2022		
	€	Rel
EBI	€294	55
Production	€133	73
Fertility	€122	41
Calving	€31	57
Beef	€-15	42
Health	€14	66
Maintenance	€7	39
Management	€3	60

PRODUCTION		
Milk (Kg)	235	Daus 0
Fat (Kg)	19.1	Herds 0
Protein (Kg)	19.4	% Rel 73
Fat %	+0.17	
Protein (%)	+0.19	

FERTILITY		
Calving Int (Days)	-6.5	Daus 0
Survival (%)	+3.2	Herds 0

HEALTH		
Lameness	-0.03	Good
SCC	-0.15	Good
Mastitis (%)	-0.07	Good

MANAGEMENT		
Temperament	-0.16	Below Ave
Milking Speed	-28	Fast

CALVING		
Heifer Calv. Diff	7.1	56 0 Rec
Heifer Calv. Risk	Moderate	
Cow Calv.	2.8	66
Dau Calving	5.7	41
Gest Len (Days)	-3.3	60
Calf Mort	-0.9	47

BEEF		
Carcass Wt	-5	Average
Carcass Conf	-1.0	Below Ave

TYPE		
Overall	0.4	
Udder	0.9	
Feet and Legs	-0.7	

- High Milk Solids Joker Son
- Almost 40 kgs milk solids
- +0.19% Protein

Sire:	(IG) MOUNTDUDLEY JOKER / FR4686						
Dam:	WARRENFARM HEIDI 2196						
Dam Yields:							
	Milk Kgs	Fat Kgs	Ptn Kgs	F+P	BFat%	Ptn%	Clv Int
2 Lact	7035	299	277	576	4.25	3.94	355
Ave	6462	297	257	554	4.60	3.98	362
Life (3 Lct)	19460	895	775	1670	4.60	3.98	
G Sire	(IG) LONGVIEW RELIABLE / LWR						
G Dam	WARRENFARM HEIDI 5						
	Milk Kgs	Fat Kgs	Ptn Kgs	F+P	BFat%	Ptn%	Clv Int
5 Lact	9343	444	355	799	4.75	3.80	399
Ave	7696	362	302	664	4.68	3.92	426
Life (7 Lct)	60295	2867	2420	5287	4.75	4.01	

# Shunter PED

(IG)VICISLAND SHUNTER

Joseph x Milan x Odie  
HB No.: HOLIRLM218276721804

Bred by: Alan O Sullivan, Vicarstown Co Cork



HZB Daughter, GSire of Milan

G1-EBI  
A.I. Code: **FR7941**

78% Hol

aAa: -  
Beta Casein: -

# Mystery PED

(IG)CLONDROHID MYSTERY

Mystic x Art x KOZ  
HB No.: HOLIRLM222925021691

Bred by: Michael O'Leary Macroom Co Cork



KOZ Daughter

G1-EBI  
A.I. Code: **FR7857**

91% Hol

aAa: -  
Beta Casein: -

Genomic, ICBF Jan 2022		0% 10% 20% 30% 40% 50% 60% 70% 80% 90% 100%	
	€	Rel	
EBI	€291	50	
Production	€120	69	
Fertility	€120	35	
Calving	€45	54	
Beef	€-19	39	
Health	€14	59	
Maintenance	€15	37	
Management	€-3	53	

PRODUCTION		
Milk (Kg)	113	Daus 0
Fat (Kg)	18.1	Herds 0
Protein (Kg)	15.8	% Rel 69
Fat %	+0.23	
Protein (%)	+0.20	

FERTILITY		
Calving Int (Days)	-6.6	Daus 0
Survival (%)	+3.0	Herds 0

HEALTH		
Lameness	-0.06	Good
SCC	-0.10	Good
Mastitis (%)	-0.06	Good

MANAGEMENT		
Temperament	0.11	Average
Milking Speed	22	Below Ave

CALVING		
Heifer Calv. Diff	5.6	53 0 Rec
Heifer Calv. Risk	Low	
Cow Calv.	2.6	61
Dau Calving	5.2	32
Gest Len (Days)	-4.4	60
Calf Mort	-0.2	46

BEEF		
Carcass Wt	-8	Average
Carcass Conf	-0.7	Average

TYPE		
Overall	-0.4	
Udder	-0.7	
Feet and Legs	0.0	

- €120 Production
- +0.20% Protein
- Different Pedigree

Genomic, ICBF Jan 2022		0% 10% 20% 30% 40% 50% 60% 70% 80% 90% 100%	
	€	Rel	
EBI	€290	60	
Production	€112	79	
Fertility	€129	51	
Calving	€46	51	
Beef	€-8	46	
Health	€8	66	
Maintenance	€3	44	
Management	€-1	59	

PRODUCTION		
Milk (Kg)	285	Daus 0
Fat (Kg)	19.3	Herds 0
Protein (Kg)	16.7	% Rel 79
Fat %	+0.14	
Protein (%)	+0.12	

FERTILITY		
Calving Int (Days)	-6.4	Daus 0
Survival (%)	+4.0	Herds 0

HEALTH		
Lameness	-0.08	Good
SCC	0.02	Average
Mastitis (%)	-0.04	Good

MANAGEMENT		
Temperament	0.02	Average
Milking Speed	5	Average

CALVING		
Heifer Calv. Diff	6.4	56 0 Rec
Heifer Calv. Risk	Moderate	
Cow Calv.	2.2	68
Dau Calving	4.9	41
Gest Len (Days)	-3.9	46
Calf Mort	-0.6	47

BEEF		
Carcass Wt	-1	Average
Carcass Conf	-0.9	Average

TYPE		
Overall	-0.1	
Udder	0.5	
Feet and Legs	-0.6	

- Mystic son: Different Bloodlines
- Over €110 Production
- Good Udders

Sire:	SAINTBRIGID FRANK JOSEPH / FR5860						
Dam:	VICISLAND FR4510 GRACIE 1631						
Dam Yields:							
	Milk Kgs	Fat Kgs	Ptn Kgs	F+P	BFat%	Ptn%	Clv Int
1 Lact	5183	238	211	449	4.59	4.07	N/A
Ave	5183	238	211	449	4.59	4.07	N/A
Life (1 Lct)	4347	193	171	364	4.44	3.93	
G Sire	(IG) RONNOCO MILAN / FR4510						
G Dam	VICISLAND ABO GRACIE 1032						
	Milk Kgs	Fat Kgs	Ptn Kgs	F+P	BFat%	Ptn%	Clv Int
4 Lact	7704	356	307	663	4.62	3.99	343
Ave	7121	335	280	614	4.69	3.93	360
Life (4 Lct)	27553	1287	1078	2365	4.67	3.91	

Sire:	S-S-I SHAMROCK MYSTIC-ET / FR4119						
Dam:	CLONDROHID ART LILA						
Dam Yields:							
	Milk Kgs	Fat Kgs	Ptn Kgs	F+P	BFat%	Ptn%	Clv Int
3 Lact	7688	336	293	629	4.37	3.81	365
Ave	6820	293	262	555	4.32	3.85	359
Life (3 Lct)	20194	861	772	1633	4.26	3.82	
G Sire	COOLNASOON ART / FR2249						
G Dam	ADRIVALE KOZ LILA						
	Milk Kgs	Fat Kgs	Ptn Kgs	F+P	BFat%	Ptn%	Clv Int
5 Lact	9075	372	330	702	4.10	3.64	364
Ave	7787	330	288	619	4.26	3.71	365
Life (8 Lct)	62288	2643	2307	4950	4.24	3.70	

# Mercury SRM

(IG)MYLAWN MERCURY SRM

Dell Boy x Maestro x Oman

HB No.: HOLIRLM224914433117

Bred by: Michael Denis Healy, Ovens Co Cork



G1-EBI

A.I. Code: FR7464

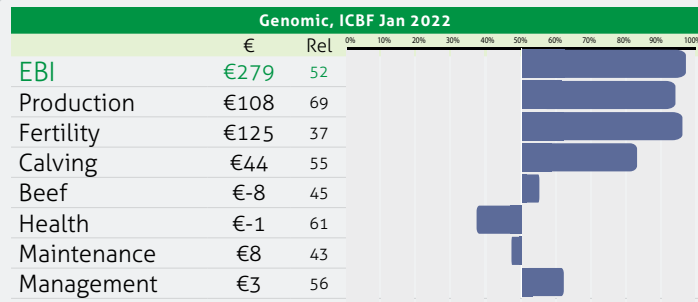
84% Hol

aAa: -

Beta Casein: -



Maestro Daughter



PRODUCTION			MANAGEMENT		
Milk (Kg)	311	Daus 0	Temperament	0.12	Average
Fat (Kg)	18.7	Herds 0	Milking Speed	4	Average
Protein (Kg)	16.5	% Rel 69	CALVING		
Fat %	+0.11		Heifer Calv. Diff	5.2	55 0 Rec
Protein (%)	+0.10		Heifer Calv. Risk	Low	
FERTILITY			Cow Calv.	2.2	64
Calving Int (Days)	-7.4	Daus 0	Dau Calving	5.9	37
Survival (%)	+2.6	Herds 0	Gest Len (Days)	-4.4	60
HEALTH			Calf Mort	-0.2	47
Lameness	-0.01	Average	BEEF		
SCC	0.05	Average	Carcass Wt	-1	Average
Mastitis (%)	-0.01	Average	Carcass Conf	-0.6	Average
			TYPE		
			Overall	-0.6	
			Udder	-0.3	
			Feet and Legs	-1.0	

- Different Pedigree
- Good Volume with Percentage improvement
- Over 35kgs Milk Solids

# Maykir SRM

(IG)COGRAN MAYKIR SRM

Beechnut x Luke x SOK

HB No.: HOLIRLM218270841576

Bred by: Jeremiah Glynn, Banagher Co Offaly



G1-EBI

A.I. Code: FR7446

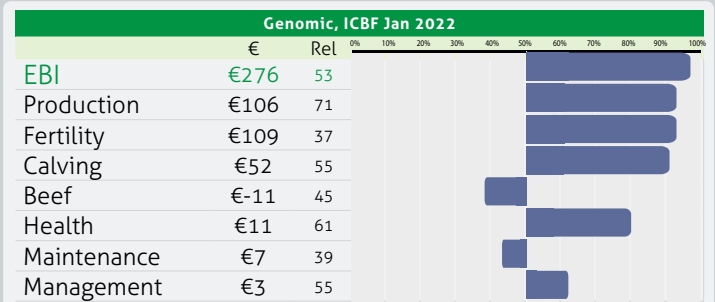
75% Hol

aAa: -

Beta Casein: -



Daughter of Anton, Sire of Beechnut



PRODUCTION			MANAGEMENT		
Milk (Kg)	140	Daus 0	Temperament	-0.06	Average
Fat (Kg)	19.0	Herds 0	Milking Speed	-17	Fast
Protein (Kg)	13.4	% Rel 71	CALVING		
Fat %	+0.23		Heifer Calv. Diff	6.9	54 0 Rec
Protein (%)	+0.15		Heifer Calv. Risk	Moderate	
FERTILITY			Cow Calv.	2.2	63
Calving Int (Days)	-6.5	Daus 0	Dau Calving	5.5	36
Survival (%)	+2.2	Herds 0	Gest Len (Days)	-5.3	60
HEALTH			Calf Mort	-0.7	47
Lameness	-0.06	Good	BEEF		
SCC	-0.08	Average	Carcass Wt	-7	Average
Mastitis (%)	-0.04	Good	Carcass Conf	-0.7	Average
			TYPE		
			Overall	-1.0	
			Udder	-1.1	
			Feet and Legs	-0.5	

- Different Pedigree
- Over €100 Production
- Health Improver

Sire:	BALLINTOSIG DELL BOY / FR4707						
Dam:	DOCHAS FR2053 SABRINA 1040						
	Dam Yields:						
	Milk Kgs	Fat Kgs	Ptn Kgs	F+P	BFat%	Ptn%	Clv Int
3 Lact	8262	376	315	691	4.55	3.82	347
Ave	7471	322	284	606	4.31	3.80	365
Life (4 Lct)	30089	1296	1142	2438	4.31	3.80	
G Sire:	KILDARRA MAESTRO / FR2053						
G Dam:	DOCHAS OJI SABRINA 655						
	Milk Kgs	Fat Kgs	Ptn Kgs	F+P	BFat%	Ptn%	Clv Int
9 Lact	10567	368	350	718	3.48	3.31	359
Ave	8822	334	310	644	3.81	3.52	375
Life (9 Lct)	81260	3078	2861	5939	3.79	3.52	

Sire:	BEECHNUT DOVEA / FR4673						
Dam:	COGRAN FR2079 DAISY 81381						
	Dam Yields:						
	Milk Kgs	Fat Kgs	Ptn Kgs	F+P	BFat%	Ptn%	Clv Int
3 Lact	6432	275	232	507	4.28	3.61	364
Ave	5968	259	220	479	4.34	3.69	396
Life (3 Lct)	17029	729	626	1355	4.28	3.68	
G Sire:	(IG) MODELIGO LUKE / FR2079						
G Dam:	COGRAN SOK DAISY 985						
	Milk Kgs	Fat Kgs	Ptn Kgs	F+P	BFat%	Ptn%	Clv Int
6 Lact	8824	320	302	622	3.62	3.43	343
Ave	7185	268	252	520	3.73	3.51	367
Life (8 Lct)	55134	2037	1916	3953	3.69	3.48	

# Lear PED

(IG)CLONDROHID LEAR

Mystic x KOZ x Lempire  
HB No.: HOLIRLM222925071630

Bred by: Michael O'Leary Macroom Co Cork



G1-EBI  
A.I. Code: FR7737

97% Hol

aAa: -  
Beta Casein: -



KOZ Daughter

Genomic, ICBF Jan 2022		
	€	Rel
EBI	€242	62
Production	€71	80
Fertility	€107	54
Calving	€43	54
Beef	€-9	47
Health	€11	68
Maintenance	€18	46
Management	€2	64

PRODUCTION		
Milk (Kg)	275	Daus 0
Fat (Kg)	14.7	Herds 0
Protein (Kg)	11.1	% Rel 80
Fat %	+0.07	
Protein (%)	+0.03	

MANAGEMENT		
Temperament	0.02	Average
Milking Speed	-4	Average

CALVING		
Heifer Calv. Diff	5.3	59 0 Rec
Heifer Calv. Risk	Low	
Cow Calv.	2.1	70
Dau Calving	4.7	45
Gest Len (Days)	-3.1	48
Calf Mort	-0.6	48

BEEF		
Carcass Wt	-3	Average
Carcass Conf	-0.8	Average

HEALTH		
Lameness	-0.07	Good
SCC	-0.03	Average
Mastitis (%)	-0.05	Good

TYPE		
Overall	-0.1	
Udder	0.0	
Feet and Legs	-0.4	

- Outcross Pedigree
- Good Milk
- Correct Type

Sire:	S-S-I SHAMROCK MYSTIC-ET / FR4119						
Dam:	ADRIVALE KOZ LILA						
Dam Yields:							
	Milk Kgs	Fat Kgs	Ptn Kgs	F+P	BFat%	Ptn%	Clv Int
6 Lact	8517	354	324	678	4.16	3.80	341
Ave	7787	330	288	619	4.26	3.71	365
Life (8 Lct)	61414	2598	2271	4869	4.23	3.70	
G Sire	KEVINSFORT OJI HAZE / KOZ						
G Dam	ADRIVALE LZP LILA						
	Milk Kgs	Fat Kgs	Ptn Kgs	F+P	BFat%	Ptn%	Clv Int
7 Lact	6593	363	238	601	5.51	3.61	384
Ave	5896	312	225	538	5.29	3.82	375
Life (7 Lct)	37728	1968	1425	3393	5.22	3.78	

# Apex PED

(IG)MEENALA APEX

Ronald x Art x ZPB  
HB No.: HOLIRLM217813981585

Bred by: Florence O'Connor, Castleisland Co Kerry



G1-EBI  
A.I. Code: FR7362

81% Hol

aAa: -  
Beta Casein: -



Daughter of Ronaldo, Sire of Ronald

Genomic, ICBF Jan 2022		
	€	Rel
EBI	€275	51
Production	€99	68
Fertility	€124	36
Calving	€40	55
Beef	€-3	44
Health	€5	61
Maintenance	€4	39
Management	€6	54

PRODUCTION		
Milk (Kg)	90	Daus 0
Fat (Kg)	14.6	Herds 0
Protein (Kg)	13.1	% Rel 68
Fat %	+0.19	
Protein (%)	+0.17	

MANAGEMENT		
Temperament	0.16	Good
Milking Speed	-2	Average

CALVING		
Heifer Calv. Diff	6.7	60 0 Rec
Heifer Calv. Risk	Moderate	
Cow Calv.	2.6	63
Dau Calving	5.7	37
Gest Len (Days)	-4.3	59
Calf Mort	-0.5	47

BEEF		
Carcass Wt	2	Average
Carcass Conf	-0.7	Average

HEALTH		
Lameness	-0.04	Good
SCC	-0.02	Average
Mastitis (%)	-0.02	Good

TYPE		
Overall	-0.9	
Udder	-0.7	
Feet and Legs	-1.2	

- Different Sire Lines
- High Percentages
- Balanced EBI Improvement

Sire:	GLENABOY RONALD FR4785						
Dam:	MEENALA 2249 APRIL 1404						
Dam Yields:							
	Milk Kgs	Fat Kgs	Ptn Kgs	F+P	BFat%	Ptn%	Clv Int
2 Lact	7025	280	255	535	3.99	3.63	386
Ave	6892	274	248	522	3.98	3.59	386
Life (2 Lct)	12600	490	445	935	3.89	3.53	
G Sire	COOLNASOON ART						
G Dam	MEENALA ZPB APRIL 1086						
	Milk Kgs	Fat Kgs	Ptn Kgs	F+P	BFat%	Ptn%	Clv Int
5 Lact	8297	297	295	592	3.58	3.55	371
Ave	7370	279	258	537	3.81	3.58	371
Life (6 Lct)	42484	1598	1474	3072	3.76	3.47	

# NCBC DAIRY PROGRAMME



- Focused on maximum EBI gain
- Genomic testing 4000 calves per year
- Committed to excellent semen quality
- G1 bulls tested in Genelreland for field fertility data
- Working with Ireland's best cows
- Delivering the best genetics to Progressive Genetics herds

## DELIVERING THE BEST

- 7 of top 10 G1 bulls for 2022 (data available Jan '22)
- 7 of top 10 Available Non-G1 bulls for 2022 (data available Jan '22)
- 43 Bulls over €320 EBI including:
  - 18 bulls €350+
  - 35 bulls €330+



Got a top female we should know about?

Contact Dairy Program Development Coordinator Jan Douglas on 086 108 1024

Dam of Brandy Kew, 5 Generation NCBC Breeding



# Chilli PED

(IG)BALLYELLY CHILLI

Chilton x Corinthian x Mogul  
HB No.: HOLIRLM219965852644

Bred by: Trevor Lockhart Letterkenny Co Donegal



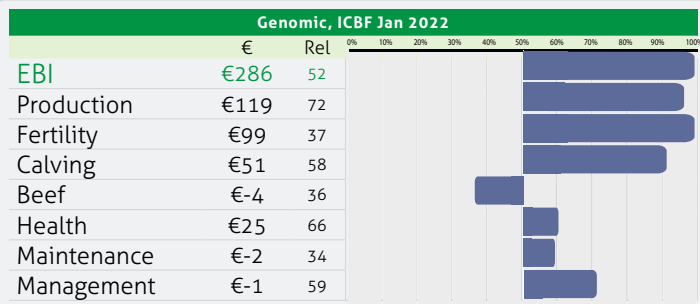
A.I. Code: FR7910

100% Hol

aAa: -  
Beta Casein: -



Momore Oman Raven EX, 4th Dam of Chilli



PRODUCTION		
Milk (Kg)	510	Daus 0
Fat (Kg)	19.6	Herds 0
Protein (Kg)	21.1	% Rel 72
Fat %	-0.01	
Protein (%)	+0.06	

FERTILITY		
Calving Int (Days)	-5.1	Daus 0
Survival (%)	+2.8	Herds 0

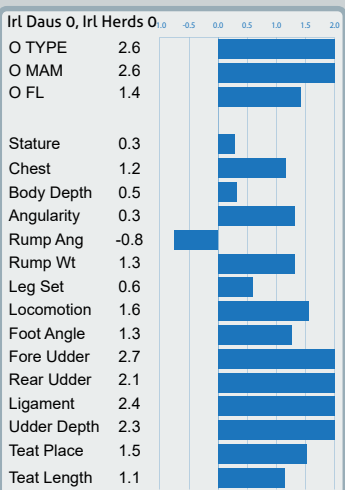
HEALTH		
Lameness	-0.10	Good
SCC	-0.19	Good
Mastitis (%)	-0.11	Good

MANAGEMENT		
Temperament	-0.19	Below Ave
Milking Speed	-19	Fast

CALVING			
	% Rel	Note	
Heifer Calv. Diff	4.9	59	0 Rec
Heifer Calv. Risk			Low
Cow Calv.	2.3	71	
Dau Calving	4.7	39	
Gest Len (Days)	-4.4	60	
Calf Mort	-0.1	46	

BEEF		
Carcass Wt	0	Average
Carcass Conf	-1.2	Below Ave

TYPE		
Overall	2.6	
Udder	2.6	
Feet and Legs	1.4	



- Raven Family Strikes Again
- Moderate Size & Good Width
- Super Udders
- 40 Kgs Milk Solids

# Francis Pp PED

(IG)TOBERMARTIN FRANCIS

Jeronimo x Perseus x Masterpeice  
HB No.: HOLIRLM224111351663

Bred by: James Egan Tarbert Co Kerry



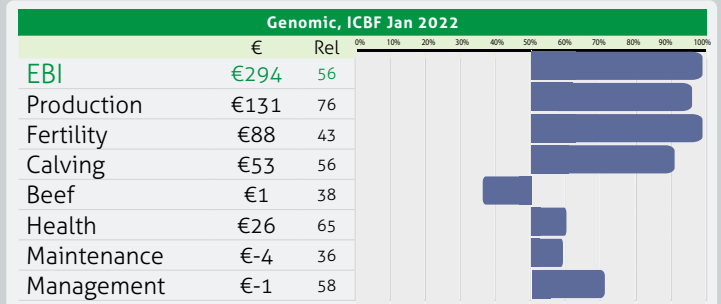
A.I. Code: FR7923

97% Hol

aAa: -  
Beta Casein: -



Perseus Daughter



PRODUCTION		
Milk (Kg)	293	Daus 0
Fat (Kg)	21.9	Herds 0
Protein (Kg)	19.1	% Rel 76
Fat %	+0.17	
Protein (%)	+0.15	

FERTILITY		
Calving Int (Days)	-4.5	Daus 0
Survival (%)	+2.5	Herds 0

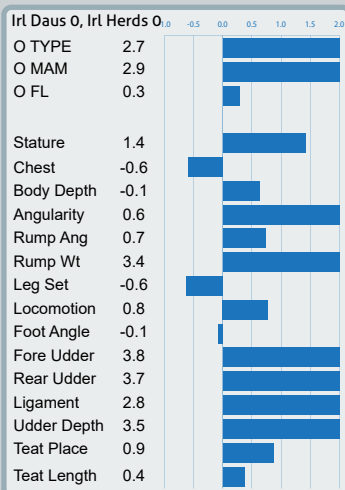
HEALTH		
Lameness	-0.05	Good
SCC	-0.30	Good
Mastitis (%)	-0.11	Good

MANAGEMENT		
Temperament	-0.02	Average
Milking Speed	2	Average

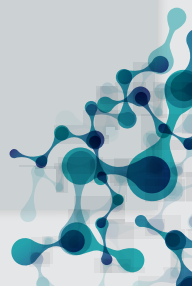
CALVING			
	% Rel	Note	
Heifer Calv. Diff	5.6	56	0 Rec
Heifer Calv. Risk			Low
Cow Calv.	2.1	67	
Dau Calving	4.6	37	
Gest Len (Days)	-4.6	60	
Calf Mort	-0.2	45	

BEEF		
Carcass Wt	4	Heavier
Carcass Conf	-1.3	Below Ave

TYPE		
Overall	2.7	
Udder	2.9	
Feet and Legs	0.3	



- Hetrozygous Polled
- 40 Kgs Milk Solids
- Outstanding Percentages
- Excellent Udders
- Strong Cow Family: 3rd Dam is EX92 4E



# Alibi PED

(IG)BUNACLOY ALIBI

Praser x Monterey x Doorman

HB No.: HOLIRLM217146724259

Bred by: Mike & Michael Magan, Killashee Co Longford

G1-Type

A.I. Code: FR7905

100% Hol

aAa: -

Beta Casein: -



KAMPS-HOLLOW ALTITUDE-ET EX 95, 5th Dam of Alibi

Genomic, ICBF Jan 2022		
€	Rel	
<b>EBI</b>	<b>€254</b>	<b>58</b>
Production	€123	78
Fertility	€81	44
Calving	€33	51
Beef	€-4	45
Health	€22	67
Maintenance	€-2	45
Management	€1	61

PRODUCTION		
Milk (Kg)	365	Daus 0
Fat (Kg)	26.0	Herds 0
Protein (Kg)	17.4	% Rel 78
Fat %	+0.19	
Protein (%)	+0.08	

MANAGEMENT		
Temperament	-0.08	Average
Milking Speed	-12	Fast

CALVING		
Heifer Calv. Diff	5.8	59 0 Rec
Heifer Calv. Risk	Low	
Cow Calv.	2.3	67
Dau Calving	5.3	39
Gest Len (Days)	-2.9	47
Calf Mort	0.2	45

FERTILITY		
Calving Int (Days)	-4.8	Daus 0
Survival (%)	+1.6	Herds 0

BEEF		
Carcass Wt	1	Average
Carcass Conf	-1.5	Below Ave

HEALTH		
Lameness	-0.07	Good
SCC	-0.19	Good
Mastitis (%)	-0.11	Good

TYPE	
Overall	2.1
Udder	2.5
Feet and Legs	1.8

Irl Daus 0, Irl Herds 0	
O TYPE	2.1
O MAM	2.5
O FL	1.8
Stature	1.2
Chest	0.1
Body Depth	0.5
Angularity	0.4
Rump Ang	-0.2
Rump Wt	1.3
Leg Set	-0.9
Locomotion	2.3
Foot Angle	1.2
Fore Udder	3.2
Rear Udder	2.4
Ligament	3.1
Udder Depth	3
Teat Place	1.2
Teat Length	0.3

- Apple Family
- Generations of High Classification Cows
- GDam & GGDam both show winners
- Excellent Solids
- Moderate Size & excellent Udders

## (IG)BALLYELLY CHILLI

Sire: PEAK CHILTON-ET / FR5668

Dam: ARDNASALEM CORINTHIAN RAVEN ET EX90

Dam Yields:							
	Milk Kgs	Fat Kgs	Ptn Kgs	F+P	BFat%	Ptn%	Clv Int
4 Lact	12122	478	392	870	3.94	3.23	315
Ave	10669	417	352	769	3.90	3.31	361
Life (4 Lct)	41600	1617	1372	2989	3.89	3.30	

G Sire BALLYCAIRN CORINTHIAN / S2253

G Dam MONAMORE RAVEN 27 ET EX91 2E

	Milk Kgs	Fat Kgs	Ptn Kgs	F+P	BFat%	Ptn%	Clv Int
4 Lact	12292	406	415	821	3.30	3.37	470
Ave	9825	362	336	698	3.75	3.43	493
Life (4 Lct)	51374	1955	1843	3798	3.81	3.59	

## (IG)TOBERMARTIN FRANCIS

Sire: ABS JERONIMO-P-ET / FR4689

Dam: TOBERMARTIN PERSEUS LADY VG85

Dam Yields:							
	Milk Kgs	Fat Kgs	Ptn Kgs	F+P	BFat%	Ptn%	Clv Int
2 Lact	10702	433	429	862	4.05	4.01	359
Ave	9731	408	383	790	4.21	3.93	359
Life (2 Lct)	18989	797	742	1539	4.20	3.91	

G Sire WESTCOAST PERSEUS / FR4187

G Dam TOBERMARTIN LFM LADY 905 VG88

	Milk Kgs	Fat Kgs	Ptn Kgs	F+P	BFat%	Ptn%	Clv Int
4 Lact	13258	547	502	1049	4.13	3.78	376
Ave	10662	403	402	804	3.79	3.77	434
Life (6 Lct)	70885	2730	2724	5454	3.85	3.84	

## (IG)BUNACLOY ALIBI

Sire: VH PRASER / FR4573

Dam: BUNACLOY V-H MONTEREY ALIBI ET

Dam Yields:							
	Milk Kgs	Fat Kgs	Ptn Kgs	F+P	BFat%	Ptn%	Clv Int
3 Lact	8508	328	306	634	3.86	3.60	348
Ave	7743	296	279	575	3.82	3.60	372
Life (3 Lct)	23782	911	859	1770	3.83	3.61	

G Sire VIEW-HOME MONTEREY-ET / FR2059

G Dam BUNACLOY V-B DOORMAN ALIOLI ET

	Milk Kgs	Fat Kgs	Ptn Kgs	F+P	BFat%	Ptn%	Clv Int
1 Lact	10310	459	347	806	4.46	3.37	N/A
Ave	10071	438	361	798	4.35	3.59	418
Life (2 Lct)	18472	789	659	1448	4.27	3.57	



ARDNASALEM MCL BOOKEM RAVEN ET EX 91 3E  
Sister to 3rd Dam of Chilli

# Albo F12J4 XSR

G1-XBred

A.I. Code: **FRX137**

(IG) SHEANMORE ALBO

25% JE

Albert x Jester x Justin

aAa: -

HB No.: **HOLIRLM214040533774**

Beta Casein: -

Bred by: Patsy Ahern, Ballyduff Co Waterford



Dam of Albert

Genomic, ICBF Jan 2022		€	Rel	0%	10%	20%	30%	40%	50%	60%	70%	80%	90%	100%
EBI		€316	57	[Bar chart showing relative values for various traits]										
Production		€117	78											
Fertility		€132	44											
Calving		€49	49											
Beef		€-16	46											
Health		€13	62											
Maintenance		€12	45											
Management		€8	56											

PRODUCTION			MANAGEMENT		
Milk (Kg)	126	Daus 0	Temperament	0.14	Average
Fat (Kg)	17.4	Herds 0	Milking Speed	-10	0
Protein (Kg)	15.6	% Rel 78	CALVING		
Fat %	+0.21		Heifer Calv. Diff	5.1	54
Protein (%)	+0.19		Heifer Calv. Risk	Low	
			Cow Calv.	1.9	62
			Dau Calving	5.1	35
			Gest Len (Days)	-4.0	46
			Calf Mort	-0.4	47
FERTILITY			BEEF		
Calving Int (Days)	-7.3	Daus 0	Carcass Wt	-6	Average
Survival (%)	+3.3	Herds 0	Carcass Conf	-0.8	Average
HEALTH			TYPE		
Lameness	-0.02	Average	Overall	0.2	
SCC	-0.15	Good	Udder	-0.1	
Mastitis (%)	-0.06	Good	Feet and Legs	0.7	

- 25% Jersey Sire
- Excellent Kgs Milk Solids
- Low SCC

# Endurance F14J2 SRM

G1-XBred

A.I. Code: **FRX134**

(IG)LEADES ENDURANCE SRM

66% Hol

Stark x Boston x Manzello

aAa: -

HB No.: **HOLIRLM212818991961**

Beta Casein: -

Bred by: James Cotter, Coachford Co Cork



Dam of Stark

Genomic, ICBF Jan 2022		€	Rel	0%	10%	20%	30%	40%	50%	60%	70%	80%	90%	100%
EBI		€335	52	[Bar chart showing relative values for various traits]										
Production		€113	73											
Fertility		€147	35											
Calving		€41	54											
Beef		€-15	40											
Health		€16	60											
Maintenance		€29	42											
Management		€4	54											

PRODUCTION			MANAGEMENT		
Milk (Kg)	158	Daus 0	Temperament	0.03	Average
Fat (Kg)	20.0	Herds 0	Milking Speed	-9	Average
Protein (Kg)	14.5	% Rel 73	CALVING		
Fat %	+0.23		Heifer Calv. Diff	5.6	50
Protein (%)	+0.16		Heifer Calv. Risk	Low	
			Cow Calv.	2.4	62
			Dau Calving	5.2	34
			Gest Len (Days)	-3.7	60
			Calf Mort	0.2	46
FERTILITY			BEEF		
Calving Int (Days)	-8.5	Daus 0	Carcass Wt	-7	Average
Survival (%)	+3.3	Herds 0	Carcass Conf	-0.5	Average
HEALTH			TYPE		
Lameness	-0.05	Good	Overall	-0.8	
SCC	-0.18	Good	Udder	-0.8	
Mastitis (%)	-0.06	Good	Feet and Legs	-0.6	

- Huge Production Index
- +35 Kgs Milk Solids
- Excellent Health Index

Sire:	(IG) BALLYGOWN ALBERT / FR4513						
Dam:	No.424						
Dam Yields:							
	Milk Kgs	Fat Kgs	Ptn Kgs	F+P	BFat%	Ptn%	Clv Int
5 Lact	7777	408	323	731	5.25	4.16	353
Ave	7354	369	297	666	5.02	4.04	368
Life (5 Lct)	36769	1845	1485	3330	5.02	4.04	
G Sire	HILLSTAR LOT JESTER S3J / HJT						
G Dam	No.064						
	Milk Kgs	Fat Kgs	Ptn Kgs	F+P	BFat%	Ptn%	Clv Int
3 Lact	7414	356	290	646	4.80	3.91	349
Ave	6353	299	246	545	4.72	3.86	366
Life (3 Lct)	19058	898	738	1636	4.72	3.86	

Sire:	(IG) HIGHMOUNT STARK						
Dam:	LEADES RHODA 1277						
Dam Yields:							
	Milk Kgs	Fat Kgs	Ptn Kgs	F+P	BFat%	Ptn%	Clv Int
4 Lact	7736	357	272	629	4.62	3.52	382
Ave	7282	326	261	587	4.48	3.58	375
Life (4 Lct)	28250	1255	1006	2261	4.44	3.56	
G Sire	BALLYBRIDE BOSTON						
G Dam	LEADS KOZ RHODA 3						
	Milk Kgs	Fat Kgs	Ptn Kgs	F+P	BFat%	Ptn%	Clv Int
4 Lact	10009	431	354	785	4.30	3.54	343
Ave	7943	320	275	595	4.01	3.44	363
Life (4 Lct)	30502	1211	1049	2260	3.97	3.44	



# Firelite F10J6 XSR

G1-XBred

A.I. Code: JEX146

(IG) LINVID FIRELITE

40% JE

Rio x Inca x Victor

aAa: -

HB No.: HOLIRLM216708981118

Beta Casein: -

Bred by: David Deane, Doneraile Co Cork



Genomic, ICBF Jan 2022		
	€	Rel
EBI	€287	53
Production	€117	73
Fertility	€133	37
Calving	€43	43
Beef	€-38	40
Health	€1	56
Maintenance	€30	43
Management	€1	55

PRODUCTION		
Milk (Kg)	115	Daus 0
Fat (Kg)	21.4	Herds 0
Protein (Kg)	14.1	% Rel 73
Fat %	+0.29	
Protein (%)	+0.17	

MANAGEMENT		
Temperament	0.00	Average
Milking Speed	0	Average

CALVING		
	% Rel	Note
Heifer Calv. Diff	4.3	52 0 Rec
Heifer Calv. Risk	Low	
Cow Calv.	2.0	60
Dau Calving	0.0	0
Gest Len (Days)	-3.2	60
Calf Mort	0.0	0

FERTILITY		
Calving Int (Days)	-7.2	Daus 0
Survival (%)	+3.4	Herds 0

BEEF		
Carcass Wt	0	Average
Carcass Conf	0.0	Above Ave

HEALTH		
Lameness	-0.06	Good
SCC	0.05	Average
Mastitis (%)	0.01	Average

TYPE		
Overall	-0.3	
Udder	-1.1	
Feet and Legs	1.4	

- High Milk Solids Kgs
- Over 35 Kgs Fat + Protein
- 40% Jersey

Sire:	MONEEN RIO / JE5986						
Dam:	No.040						
	Dam Yields:						
	Milk Kgs	Fat Kgs	Ptn Kgs	F+P	BFat%	Ptn%	Clv Int
4 Lact	8522	396	325	0	4.64	3.81	369
Ave	7252	318	280	0	4.37	3.86	371
Life (0 Lct)	0	0	0	0	0.00	0.00	
G Sire	GYDELAND EXCEL INCA S3F						
G Dam	No.267						
	Milk Kgs	Fat Kgs	Ptn Kgs	F+P	BFat%	Ptn%	Clv Int
4 Lact	6206	270	247	0	4.34	3.98	346
Ave	4767	219	184	0	4.62	3.81	371
Life (0 Lct)	0	0	0	0	0.00	0.00	

# Potomac F11J5 XSR

G1-XBred

A.I. Code: JEX158

(IG) RIVERFORK POTOMAC

53% Hol

Rio x LHZ x GYK

aAa: -

HB No.: HOLIRLM227101250227

Beta Casein: -

Bred by: Bláthnaid O'Loughlin, Grenagh Co Cork



Daughter of Triplestar, Sire of Rio

Genomic, ICBF Jan 2022		
	€	Rel
EBI	€322	52
Production	€98	72
Fertility	€165	36
Calving	€42	54
Beef	€-28	40
Health	€11	58
Maintenance	€32	43
Management	€3	55

PRODUCTION		
Milk (Kg)	-111	Daus 0
Fat (Kg)	20.6	Herds 0
Protein (Kg)	7.6	% Rel 72
Fat %	+0.44	
Protein (%)	+0.20	

MANAGEMENT		
Temperament	0.00	Average
Milking Speed	0	Average

CALVING		
	% Rel	Note
Heifer Calv. Diff	5.2	53 0 Rec
Heifer Calv. Risk	Low	
Cow Calv.	2.1	61
Dau Calving	0.0	0
Gest Len (Days)	-2.8	61
Calf Mort	0.0	0

FERTILITY		
Calving Int (Days)	-9.2	Daus 0
Survival (%)	+3.9	Herds 0

BEEF		
Carcass Wt	0	Average
Carcass Conf	0.0	Above Ave

HEALTH		
Lameness	-0.07	Good
SCC	-0.05	Average
Mastitis (%)	-0.04	Good

TYPE		
Overall	-0.4	
Udder	-0.4	
Feet and Legs	-0.3	

- +0.20% Protein
- High Daughter Fertility
- Health Improver

Sire:	MONEEN RIO / JE5986						
Dam:	SHANLYRE LHZ NORA						
	Dam Yields:						
	Milk Kgs	Fat Kgs	Ptn Kgs	F+P	BFat%	Ptn%	Clv Int
6 Lact	7678	300	301	601	3.91	3.92	352
Ave	6934	347	264	611	5.07	3.8	442
Life (6 Lct)	41606	2082	1581	3663	5.07	3.8	
G Sire	(IG) LAURAGH EVERT / LHZ						
G Dam	SHANLYRE GYK NORA 2						
	Milk Kgs	Fat Kgs	Ptn Kgs	F+P	BFat%	Ptn%	Clv Int
4 Lact	7284	412	292	704	5.65	4.01	360
Ave	6561	385	258	643	5.86	3.93	357
Life (4 Lct)	26244	1539	1033	2572	5.86	3.93	

# Fanta Not For Pedigree

IG NEXTGEN FANTA

Crisis x Conrad x Jester

HB No.: JERIRLM226044642518

Bred by: Teagasc, Fermoy Co Cork

G1-Jersey

A.I. Code: JE8067

97% JE

aAa: -

Beta Casein: -



Superstition Daughter, Sire of Crisis

Genomic, ICBF Jan 2022		
	€	Rel
EBI	€246	50
Production	€92	76
Fertility	€96	34
Calving	€50	54
Beef	€-49	39
Health	€8	63
Maintenance	€46	39
Management	€3	61

PRODUCTION			
Milk (Kg)	-433	Daus	0
Fat (Kg)	16.4	Herds	0
Protein (Kg)	3.2	% Rel	67
Fat %	+0.63		
Protein (%)	+0.34		

FERTILITY			
Calving Int (Days)	-4.4	Daus	0
Survival (%)	+3.3	Herds	0

HEALTH			
Lameness	-0.07	Average	
SCC	-0.02	Average	
Mastitis (%)	-0.02	Average	

MANAGEMENT			
Temperament	0.02	Average	
Milking Speed	0	Average	

CALVING			
	% Rel	Note	
Heifer Calv. Diff	3.0	57	0 Rec
Heifer Calv. Risk		Low	
Cow Calv.	1.6	57	
Dau Calving	5.4	40	
Gest Len (Days)	-3.6	60	
Calf Mort	-0.4	44	

BEEF			
Carcass Wt	-23	Average	
Carcass Conf	-0.86	Above Ave	

TYPE			
Overall	0.8		
Udder	-0.5		
Feet and Legs	3.2		

Sire:	NEXTGEN CRISIS / F373						
Dam:	NEXTGEN JE2438 OSBURN 1927						
Dam Yields:							
	Milk Kgs	Fat Kgs	Ptn Kgs	F+P	BFat%	Ptn%	Clv Int
1 Lact	3179	189	132	321	5.93	4.16	NA
Ave	3179	189	132	321	5.93	4.16	NA
Life (1 Lct)	3179	189	132	321	5.93	4.16	
G Sire	BELLS CM CONRAD S2J / JE2438						
G Dam	NEXTGEN HILLSTAR						
	Milk Kgs	Fat Kgs	Ptn Kgs	F+P	BFat%	Ptn%	Clv Int
4 Lact	5049	294	234	528	5.83	4.64	361
Ave	4635	270	205	475	5.83	4.43	367
Life (6 Lct)	27811	1618	1231	2849	5.83	4.43	

- G1 Jersey Sire
- Excellent Pedigree of New Zealand Jersey Stars
- Huge Percentages

## Milk Preg Testing for better breeding performance

Via post or milk recording



### Pregnancy Diagnosis from milk samples

1. Simple: uses milk recording or other milk sample
2. Easy: No extra work
3. Effective: Comparable accuracy to scanning
4. Complements scanning and fits into a managed fertility programme.
5. Use from 28 days post breeding

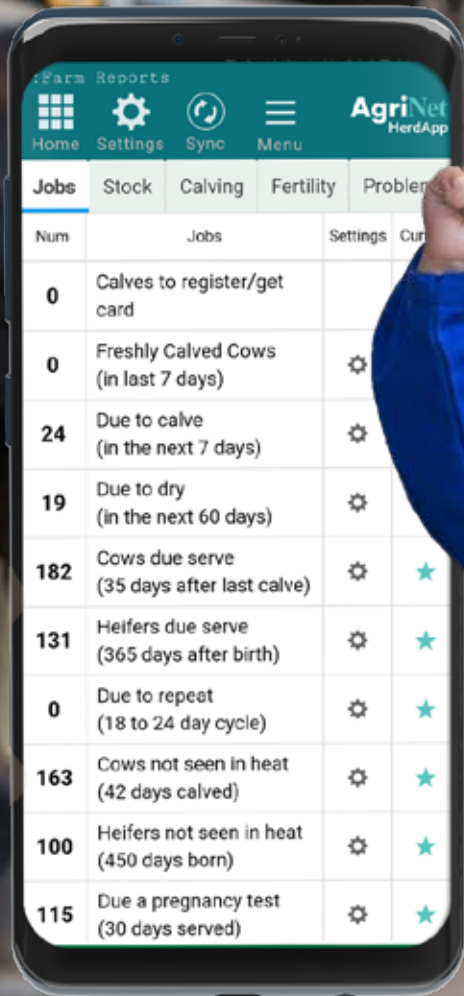
### After Breeding Season Check

1. Cost effective
2. No labour and cow handling
3. Better animal welfare
4. Less human stress
5. Normally done using herd milk recording samples, best after day 60 of pregnancy
6. Results via HerdApp or ICBF Database

### Mid-Breeding Season Check

1. Early check as soon as cows pass 28 days
2. Non-pregnant cows can be re-bred within the breeding season
3. Option for farmer to collect samples
4. Cost effective
5. No labour and cow handling
6. Better animal welfare
7. Samples via post, results by text
8. Highest accuracy from day 28 to 40
9. Sampling kits available from PG website

From  
€3.60  
per test



Farm Reports		AgriNet HerdApp		
Home	Settings	Sync	Menu	
Jobs	Stock	Calving	Fertility	Problems
Num	Jobs	Settings	Cur	
0	Calves to register/get card			
0	Freshly Calved Cows (in last 7 days)	⚙️		
24	Due to calve (in the next 7 days)	⚙️		
19	Due to dry (in the next 60 days)	⚙️		
182	Cows due serve (35 days after last calve)	⚙️	★	
131	Heifers due serve (365 days after birth)	⚙️	★	
0	Due to repeat (18 to 24 day cycle)	⚙️	★	
163	Cows not seen in heat (42 days calved)	⚙️	★	
100	Heifers not seen in heat (450 days born)	⚙️	★	
115	Due a pregnancy test (30 days served)	⚙️	★	

## Manage your farm efficiently

Links directly to agfood and ICBF and is designed to manage all the key day to day functions on a typical Irish farm.

### WE'RE HERE TO HELP.

Unlimited training is available as you proceed, step by step, at your own pace.  
email: [herdapp@agrinet.ie](mailto:herdapp@agrinet.ie)  
call: 046-9245118 or 046-9249964



PART OF YOUR FARM

Download our app now



Call 046 924 9964 for queries and support

Scan QR Code  
for details





### Breeding Advisor & Semen Sales



**Gerard McCool**  
087 - 2057588  
Donegal



**John Griffith**  
086 - 8431624  
Sligo, Mayo,  
Roscommon



**Deirdre Toal**  
087 - 2599314  
Monaghan, Longford,  
Cavan, Leitrim



**John McDaniel**  
087 - 2360318  
Louth & Inniskeen Area



**Michael Quinn**  
086 - 3892908  
Meath, North Dublin



**Leo Davis**  
086 - 8197114  
Kells Area & Westmeath  
East



**Violet Nevin**  
087 - 6253395  
Westmeath, North  
Offaly



**Trevor Hanly**  
087 - 2272446  
087 - 9148922  
Carlow, Wicklow, Kildare,  
E Laois, Nth Wexford



**Sean Hayes**  
087 - 2757835  
Tipperary, West Laois,  
South Offaly



**Denis Dalton**  
087 - 6785875  
Kilkenny



**Ger Power**  
086 - 2158505  
Kilkenny



**John Fogarty**  
087 - 6752401  
Part of Tipperary &  
Kilkenny



**Eugene Kehoe**  
087 - 6842846  
South Wexford



**David Phelan**  
086 - 8959558  
East Waterford



**Seamus Hughes**  
087 - 2331235  
Sales Manager



**Shane Leane**  
086 - 7514121  
Technical Sales  
Manager



**Martin Regan**  
086 - 8216253  
Beef Specialist, West of  
Ireland

#### *Milk Recording Contacts*

**Milk Recording Supervisor**  
Louise Knight 087-2505723  
Kevin O Neill 086-1030396  
**Milk Recording Office**  
Tel: 046-9540606

