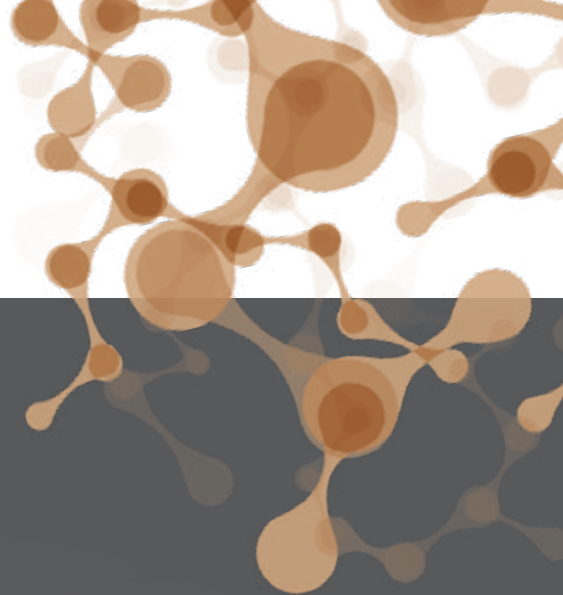


September  
**2021**  
ICBF Proofs

PRESTIGE ANGUS SIREs 2022



PROGRESSIVE  
  
GENETICS

PRESTIGE  
*Angus* 2022

## Contents

Name	Page
HW RED LAMBORGHINI V772	1
HW FARGHAL T516	2
HF ALCATRAZ 60F	3
TARA TERMINUS	4
TE MANIA NEBO N424	5
PROHURST EOGHAN W759	6
TE MANIA BERKLEY B1	7
COONAMBLE ELEVATOR E11	8
MILLAH MURRAH KINGDOM K35	9
MILLAH MURRAH KLOONEY K42	9
WEETON DIAMOND MINE P444	10
HW LORD HORATIO V538	11
INTELAGRI MATTEO E.T.	12

### Dear Pedigree Breeder,

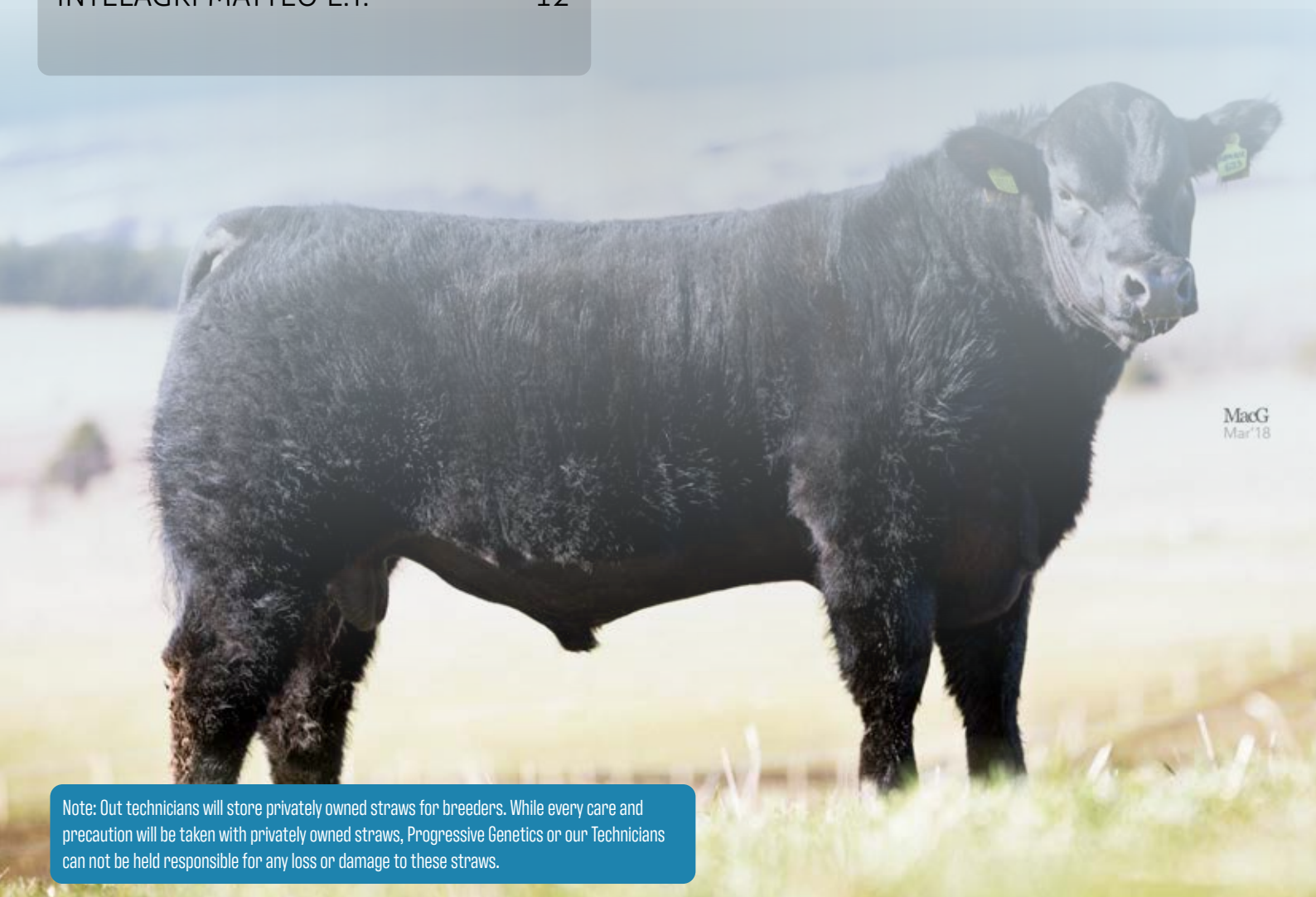
Welcome to our new Prestige Angus catalogue. The Prestige Selection is a new range of elite bulls which we at Progressive Genetics have chosen for you, the pedigree breeder. These sires have been carefully selected & represent the best Angus genetics available globally.

The Progressive Genetics team are always available to provide professional advice to enable you to achieve the breeding goals for your herd.

Please note many of the sires featured are 'pre-order' & will not be carried by your A.I. technician, these sires should be pre-ordered from Progressive Genetics at least three weeks before the semen will be needed. You can call your local representative, order on-line from [progressivegenetics.ie](http://progressivegenetics.ie) or call the office.

### *Rosalish Goulding*

Rosalish Goulding  
Beef Programme Manager  
National Cattle Breeding Centre



MacG  
Mar'18

Note: Out technicians will store privately owned straws for breeders. While every care and precaution will be taken with privately owned straws, Progressive Genetics or our Technicians can not be held responsible for any loss or damage to these straws.



# Lamborghini

HW RED LAMBORGHINI V772

DOB:18/12/19

Pedigree Status: PED

Code: **AA7308**

Myostatin: +/-

PRESTIGE  
*Angus*



Star Rating (Within Breed)	Index ICBF, Sept '21 Genotype Incl.	€ Value	Rel	Star Rating (Across Breed)
★★★★★	<b>Replacement Index</b>	€110	34% (Low)	★★★★★
★★★★★	<b>Terminal Index</b>	€57	37% (Too Low)	★★★★★
★★★★★	<b>DairyBeef Index</b>	€59	36 % (#N/A)	★★★★★
<b>Expected Progeny Performance</b>				
Calving Difficulty	Beef Heifers (% 3&4)	3.8%	37% (Too Low)	5.6 Records
	Beef Cows (% 3&4)	1.8%	60% (High)	
★★★★★	Gestation Length (days)	0.2 days	32% (High)	★★★★★
★★★★★	Docility (Scale)	0.00 Scale	31 % (Too Low)	★★★★★
★★★★★	Carcass Weight (Kg)	5.9 Kg	33 % (Low)	★★★★★
★★★★★	Carcass Conf. (Scale 1-15)	0.35 Scale	31 % (Too Low)	★★★★★
<b>Expected Daughter Performance</b>				
	Daughter calving diff (% 3&4)	7.3 %	51 % (High)	
★★★★★	Daughter milk (Kg)	11.2 Kg	34 % (2.3)	★★★★★
★★★★★	Daughter calving interval (d)	-2.8 days	31 % (283)	★★★★★



Sire, HW Red Maker

- An excellent quality new red Angus with an outcross pedigree
- Lamborghini boasts many great AA names in his pedigree; including Auchincrieve Red Elation G908 and Red Sten Essence 42G
- Lamborghini was a standout since birth, he is full of breed character and oozes style

Scan QR Code for most recent proof



Red Six Mile Grand Slam 130Z  
 Hw Red Maker S181 Windy Gowl Red Moorhen L179  
 Hw Red Lily S200 Mohmar Eltigre N155  
 Windy Gowl Red Lia M201



GGsire: HF El Tigre

# Farghal

HW FARGHAL T516  
DOB:17/04/2017

Code: **AA4640**  
Myostatin: +/-

Pedigree Status:

PRESTIGE  
*Angus*



Star Rating (Within Breed)	Index ICBF, Sept '21 Genotype Incl.	€ Value	Rel	Star Rating (Across Breed)
★★★★★	<b>Replacement Index</b>	€102	58% (Average)	★★★★★
★★★★★	<b>Terminal Index</b>	€84	85% (V High)	★★★★★
★★★★★	<b>DairyBeef Index</b>	€84	90 % (V High)	★★★★★
<b>Expected Progeny Performance</b>				
Calving Difficulty	Beef Heifers (% 3&4)	5.7%	93% (V High)	62 Records
	Beef Cows (% 3&4)	2.6%	96% (V High)	
★★★★★	Gestation Length (days)	-0.6 days	99% (V High)	★★★★★
★★★★★	Docility (Scale)	0.08 Scale	94 % (V High)	★★★★★
★★★★★	Carcass Weight (Kg)	12.9 Kg	92 % (V High)	★★★★★
★★★★★	Carcass Conf. (Scale 1-15)	0.8 Scale	90 % (V High)	★★★★★
<b>Expected Daughter Performance</b>				
	Daughter calving diff (% 3&4)	7 %	54 % (Average)	
★★★★★	Daughter milk (kg)	9.6 Kg	40 % (Average)	★★★★★
★★★★★	Daughter calving interval (d)	-2.2 days	40 % (Average)	★★★★★



Farghal Son, Briarhill Angus

- Farghal's first calves were born easily and look very promising
- The sire, Netherton Kracker is producing that magic combination of calving ease, high growth and extra shape
- From the renowned Fleur family at Netherton in Scotland

Scan QR Code  
for most  
recent proof



Netherton Kracker P790  
 Netherton Fleur L623  
 S A V Brave 8320  
 Netherton Karama K574  
 Hf El Tigre 28U  
 Netherton Fleur J508



Mong Ultimate, National Calf Show Champion 2021, Bred by Joe Farrell



# Alcatraz

HF ALCATRAZ 60F

DOB:08/01/2018

Code: **AA6232**

Pedigree Status:

Myostatin: +/-

PRESTIGE  
*Angus*



Star Rating (Within Breed)	Index ICBF, Sept '21 Genotype Incl.	€ Value	Rel	Star Rating (Across Breed)
★★★★★	<b>Replacement Index</b>	€104	35% (Low)	★★★★★
★★★★★	<b>Terminal Index</b>	€84	38% (Low)	★★★★★
★★★★★	<b>DairyBeef Index</b>	€110	37 % (Low)	★★★★★
<b>Expected Progeny Performance</b>				
Calving Difficulty	Beef Heifers (% 3&4)	6.8%	41% (Average)	#N/A Records
	Beef Cows (% 3&4)	1.9%	65% (High)	
★★★★★	Gestation Length (days)	-1.6 days	58% (Average)	★★★★★
★★★★★	Docility (Scale)	0 Scale	31 % (Low)	★★★★★
★★★★★	Carcass Weight (Kg)	10.7 Kg	31 % (Low)	★★★★★
★★★★★	Carcass Conf. (Scale 1-15)	0.91 Scale	31 % (Low)	★★★★★
<b>Expected Daughter Performance</b>				
	Daughter calving diff (% 3&4)	6.9 %	51 % (Average)	
★★★★★	Daughter milk (kg)	7.2 Kg	31 % (Low)	★★★★★
★★★★★	Daughter calving interval (d)	-3.1 days	31 % (Low)	★★★★★



Daughter

- Alcatraz first calves were easily born and short gestation
- The progeny ooze style and breed character
- A perfect replacement for HF Rebel

Scan QR Code  
for most  
recent proof



Son

May-Way Breakout 1310  
 Hf Mayflower 191Z  
 Avf Breakout 5409  
 May-Way Lady Bando 086  
 Hf Tiger 5T  
 Hf Mayflower 78P

# Terminus

TARA TERMINUS  
DOB:02/02/20

Code: **AA7500**  
Pedigree Status: Myostatin: +/-

PRESTIGE  
*Angus*



Star Rating (Within Breed)	Index ICBF, Sept '21 <small>Genotype Incl.</small>	€ Value	Rel	Star Rating (Across Breed)
★★★★★	<b>Replacement Index</b>	€119	42% (Average)	★★★★★
★★★★★	<b>Terminal Index</b>	€86	45% (Too Low)	★★★★★
★★★★★	<b>DairyBeef Index</b>	€95	43 % (#N/A)	★★★★★
<b>Expected Progeny Performance</b>				
Calving Difficulty	Beef Heifers (% 3&4)	3.7%	52% (Too Low)	5.6 Records
	Beef Cows (% 3&4)	1.4%	68% (High)	
★★★★★	Gestation Length (days)	-1.5 days	40% (V High)	★★★★★
★★★★★	Dolality (Scale)	0.05 Scale	39 % (Too Low)	★★★★★
★★★★★	Carcass Weight (Kg)	8.9 Kg	42 % (Average)	★★★★★
★★★★★	Carcass Conf. (Scale 1-15)	0.88 Scale	41 % (Too Low)	★★★★★
<b>Expected Daughter Performance</b>				
Daughter calving diff (% 3&4)		7.8 %	55 % (High)	★★★★★
Daughter milk (Kg)		9.4 Kg	40 % (2.3)	
Daughter calving interval (d)		-2.3 days	35 % (283)	★★★★★



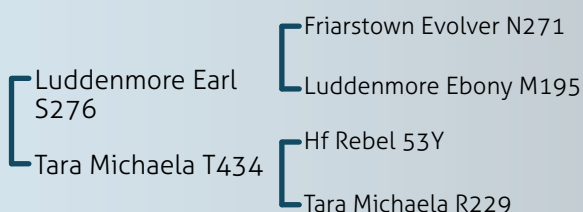
Dam Tara Michaela T434

- Terminus is an impressive young bull; power, thickness, shape, style and breed character
- Son of the renowned Luddenmore Earl from a Rebel daughter of the well known Michaela cow family
- Use him to add performance and shape while keeping easy fleshing and Angus character

Scan QR Code  
for most  
recent proof



HF Rebel, MGS







Star Rating (Within Breed)	Index ICBF, Sept '21 Genotype Incl.	€ Value	Rel	Star Rating (Across Breed)
★★★★★	<b>Replacement Index</b>	€109	33% (Low)	★★★★★
★★★★★	<b>Terminal Index</b>	€74	35% (Low)	★★★★★
★★★★★	<b>DairyBeef Index</b>	€81	36 % (Low)	★★★★★
<b>Expected Progeny Performance</b>				
Calving Difficulty	Beef Heifers (% 3&4)	2.4%	37% (Low)	#N/A Records
	Beef Cows (% 3&4)	1.4%	59% (Average)	
★★★★★	Gestation Length (days)	-0.7 days	30% (Low)	★★★★★
★★★★★	Docility (Scale)	0.07 Scale	30 % (Low)	★★★★★
★★★★★	Carcass Weight (Kg)	7.4 Kg	31 % (Low)	★★★★★
★★★★★	Carcass Conf. (Scale 1-15)	0.62 Scale	30 % (Low)	★★★★★
<b>Expected Daughter Performance</b>				
	Daughter calving diff (% 3&4)	7.7 %	51 % (Average)	
★★★★★	Daughter milk (kg)	7.6 Kg	31 % (Low)	★★★★★
★★★★★	Daughter calving interval (d)	-3.8 days	30 % (Low)	★★★★★



Sire, Te Mania Jenkins

- New bull from the Te Mania breeding programme
- Easy calving, short gestation, high growth proven bull
- The perfect replacement for Te Mania Berkley

Scan QR Code  
for most  
recent proof



MGGS, BT Right Time

Te Mania Jenkins J89

Te Mania Wargoona J214

G A R Twinhearts 8418

Te Mania Japura G115

Vermont Drambuie D057

Te Mania Wargoona G455



# Eoghan

PROHURST EOGHAN W759

DOB:25/01/2020

Pedigree Status:

Code: **AA7485**

Myostatin: +/-

PRESTIGE  
*Angus*



Star Rating (Within Breed)	Index ICBF, Sept '21 Genotype Incl.	€ Value	Rel	Star Rating (Across Breed)
★★★★★★	<b>Replacement Index</b>	€176	48% (Average)	★★★★★★
★★★★★★	<b>Terminal Index</b>	€126	50% (Average)	★★★★★★
★★★★★★	<b>DairyBeef Index</b>	€144	52 % (Average)	★★★★★★
<b>Expected Progeny Performance</b>				
Calving Difficulty	Beef Heifers (% 3&4)	4%	52% (Average)	#N/A Records
	Beef Cows (% 3&4)	2%	70% (High)	
★★★★★★	Gestation Length (days)	-3 days	60% (High)	★★★★★★
★★★★★★	Docility (Scale)	-0.04 Scale	44 % (Average)	★★★★★★
★★★★★★	Carcass Weight (Kg)	23 Kg	49 % (Average)	★★★★★★
★★★★★★	Carcass Conf. (Scale 1-15)	0.93 Scale	44 % (Average)	★★★★★★
<b>Expected Daughter Performance</b>				
	Daughter calving diff (% 3&4)	8.5 %	61 % (High)	
★★★★★★	Daughter milk (kg)	11.9 Kg	46 % (Average)	★★★★★★
★★★★★★	Daughter calving interval (d)	-6.8 days	40 % (Average)	★★★★★★



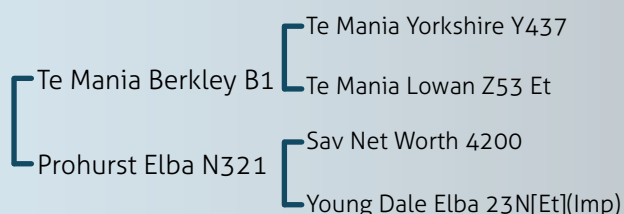
Prohurst Eoghan

- No. 1 Angus on Terminal Index and Dairy Beef Index
- Eoghan is an exceptional young bull from a great dam line, dam is a full sister to Gizmo (RGZ)
- Calving ease, short gestation, Terminal & Maternal traits in one package!
- Eoghan is a result of NCBC's planned mating programme

Scan QR Code  
for most  
recent proof



Sire, Berkley





# Berkley

TE MANIA BERKLEY B1  
DOB:29/07/2006

Code: **S1206**  
Pedigree Status: Myostatin: +/-

PRESTIGE  
*Angus*



Star Rating (Within Breed)	Index ICBF, Sept '21 Genotype Incl.	€ Value	Rel	Star Rating (Across Breed)
★★★★★★	Replacement Index	€190	81% (V High)	★★★★★★
★★★★★★	Terminal Index	€114	85% (V High)	★★★★★★
★★★★★★	DairyBeef Index	€145	86 % (V High)	★★★★★★
Expected Progeny Performance				
Calving Difficulty	Beef Heifers (% 3&4)	3.1%	82% (V High)	126 Records
	Beef Cows (% 3&4)	0.9%	91% (V High)	
★★★★★★	Gestation Length (days)	-4.7 days	95% (V High)	★★★★★★
★★★★★★	Docility (Scale)	0.02 Scale	89 % (V High)	★★★★★★
★★★★★★	Carcass Weight (Kg)	13.9 Kg	91 % (V High)	★★★★★★
★★★★★★	Carcass Conf. (Scale 1-15)	0.76 Scale	88 % (V High)	★★★★★★
Expected Daughter Performance				
	Daughter calving diff (% 3&4)	9.3 %	75 % (High)	
★★★★★★	Daughter milk (kg)	12 Kg	87 % (V High)	★★★★★★
★★★★★★	Daughter calving interval (d)	-9 days	62 % (High)	★★★★★★



Son, Oakchurch Dynamite



Daughter, Oakchurch Donna

- Te Mania Berkley B1 is a renowned and striking, well balanced sire with natural thickness.
- Berkley's exceptional indexes, combine high growth with calving ease and excellent carcase quality.
- Berkley is the sire of Te Mania Emperor E343 who sold in 2011 for \$91,000 achieving an Australian record price for an Angus bull sold at auction.

Scan QR Code  
for most  
recent proof



Te Mania Yorkshire Y437  
Te Mania Lowan Z53 Et  
S A F Focus Of E R  
Te Mania Lowan U275  
Kennys Creek Sandy S15  
Te Mania Lowan V129



# Elevator

COONAMBLE ELEVATOR E11

DOB:06/03/2009

Pedigree Status:

Code: **S2330**

Myostatin: +/-

PRESTIGE  
*Angus*



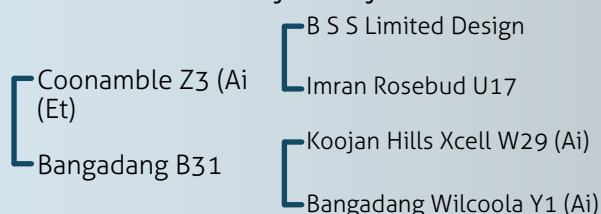
Star Rating (Within Breed)	Index ICBF, Sept '21 Genotype Incl.	€ Value	Rel	Star Rating (Across Breed)
★★★★★	<b>Replacement Index</b>	€114	57% (Average)	★★★★★
★★★★★	<b>Terminal Index</b>	€108	66% (High)	★★★★★
★★★★★	<b>DairyBeef Index</b>	€129	62 % (High)	★★★★★
<b>Expected Progeny Performance</b>				
Calving Difficulty	Beef Heifers (% 3&4)	3.4%	55% (Average)	22 Records
	Beef Cows (% 3&4)	1.7%	78% (High)	
★★★★★	Gestation Length (days)	-2 days	80% (V High)	★★★★★
★★★★★	Dolality (Scale)	0.04 Scale	62 % (High)	★★★★★
★★★★★	Carcass Weight (Kg)	23.3 Kg	73 % (High)	★★★★★
★★★★★	Carcass Conf. (Scale 1-15)	0.61 Scale	61 % (High)	★★★★★
<b>Expected Daughter Performance</b>				
	Daughter calving diff (% 3&4)	7.4 %	55 % (Average)	
★★★★★	Daughter milk (kg)	5.8 Kg	64 % (High)	★★★★★
★★★★★	Daughter calving interval (d)	-2.2 days	36 % (Low)	★★★★★



Elevator

- Use Elevator to increase size, length and power.
- +23 kg Carcass Weight
- A huge temperament improver
- The first daughters calved down in Ireland are great mothers and very milky

Scan QR Code  
for most  
recent proof



Daughter



# Kingdom

Code: AA4132

MILLAH MURRAH KINGDOM K35 ET

DOB:29/01/14

HB No: Aanusam000000Nmmk35

Myostatin: +/-



Star Rating (Within Breed)	ICBF, Sept '21 Genotype Incl.	€ Value	Rel	Star Rating (Across Breed)
★★★★★	Replacement Index	€88	37% (Too Low)	★★★★★
★★★★★	Terminal Index	€54	46% (Low)	★★★★★
★★★★★	DairyBeef Index	€68	43% (2)	★★★★★

## Expected Progeny Performance

Calving Difficulty	Beef Heifers (% 3&4)	4.8%	36% (Too Low)	
	Beef Cows (% 3&4)	3.0%	59% (Low)	5.6 Records
★★★★★	Gestation Length (days)	-0.5 d	44% (Average)	★★★★★
★★★★★	Docility (Scale)	0.02	35% (Too Low)	★★★★★
★★★★★	Carcass Weight (Kg)	4.1 Kg	48% (Low)	★★★★★
★★★★★	Carcass Conf (Scale 1 - 15)	0.45 Scale	45% (Too Low)	★★★★★

## Expected Daughter Performance

	Daughter calv diff (% 3 & 4)	6.8 %	51 % (Average)	
★★★★★	Daughter milk (kg)	6.3 Kg	30 % (2.3)	★★★★★
★★★★★	Daughter calv interval (d)	-2.2 days	33 % (283)	★★★★★

- Kingdom is the \$150,000 Australian record priced Angus bull.
- His dam has had seven other sons sell to average \$20,500, she has been a big impact the Angus breed in Australia.
- Daughters are receiving great praise for their capacity and structure, ease of calving, excellent udders and their calf rearing ability.



Dam

Scan QR Code for most recent proof



# Klooney

Code: AA4135

MILLAH MURRAH KLOONEY K42

DOB:01/01/01

HB No: Aanausm000000Nmmk42

Myostatin: +/-



Star Rating (Within Breed)	ICBF, Sept '21 Genotype Incl.	€ Value	Rel	Star Rating (Across Breed)
★★★★★	Replacement Index	€83	35% (Too Low)	★★★★★
★★★★★	Terminal Index	€52	40% (Low)	★★★★★
★★★★★	DairyBeef Index	€73	42% (3)	★★★★★

## Expected Progeny Performance

Calving Difficulty	Beef Heifers (% 3&4)	6.3%	37% (Too Low)	
	Beef Cows (% 3&4)	3.3%	63% (Low)	5.6 Records
★★★★★	Gestation Length (days)	-2.4 d	46% (Average)	★★★★★
★★★★★	Docility (Scale)	0.07	30% (Too Low)	★★★★★
★★★★★	Carcass Weight (Kg)	3.3 Kg	37% (Low)	★★★★★
★★★★★	Carcass Conf (Scale 1 - 15)	0.48 Scale	31% (Too Low)	★★★★★

## Expected Daughter Performance

	Daughter calv diff (% 3 & 4)	7.8 %	51 % (High)	
★★★★★	Daughter milk (kg)	6 Kg	30 % (2.3)	★★★★★
★★★★★	Daughter calv interval (d)	-3.8 days	31 % (283)	★★★★★

- Klooney sold for \$80,000 at Millah Murrah in 2015.
- Klooney is receiving fantastic comments for his ability to transmit exceptional structure and phenotypic excellence to his offspring.
- In Spring 2017, the first nine Klooney sons sold at Millah Murrah, to a \$50,000 industry record yearling price and an average exceeding \$20,000.



Dam

Scan QR Code for most recent proof



Hingaia 469 (Ai)

Waitara Valley Tex

Hingaia 910

Millah Murrah Flower G41

Bt Right Time 24J

Millah Murrah Flower C15

Booroomooka Theo T030

Millah Murrah Prue H4

B/R New Design 036

Booroomooka Quaint Q34

Te Mania Emperor E 343

Millah Murrah Prue F12

# Diamond Mine

WEETON DIAMOND MINE P444

DOB:13/12/2014

Pedigree Status:

Code: **S3127**

Myostatin: +/-

PRESTIGE  
*Angus*



Star Rating (Within Breed)	Index ICBF, Sept '21 Genotype Incl.	€ Value	Rel	Star Rating (Across Breed)
★★★★★★	Replacement Index	€135	55% (Average)	★★★★★★
★★★★★★	Terminal Index	€96	66% (High)	★★★★★★
★★★★★★	DairyBeef Index	€88	63 % (High)	★★★★★★
Expected Progeny Performance				
Calving Difficulty	Beef Heifers (% 3&4)	7.6%	44% (Average)	
	Beef Cows (% 3&4)	3.3%	78% (High)	36 Records
★★★★★★	Gestation Length (days)	0.5 days	74% (High)	★★★★★★
★★★★★★	Docility (Scale)	0.12 Scale	61 % (High)	★★★★★★
★★★★★★	Carcass Weight (Kg)	22 Kg	74 % (High)	★★★★★★
★★★★★★	Carcass Conf. (Scale 1-15)	0.62 Scale	64 % (High)	★★★★★★
Expected Daughter Performance				
	Daughter calving diff (% 3&4)	6.6 %	54 % (Average)	
★★★★★★	Daughter milk (kg)	11 Kg	53 % (Average)	★★★★★★
★★★★★★	Daughter calving interval (d)	-3.3 days	36 % (Low)	★★★★★★



Daughter, Antfield Una bred by Francis Cox

- Diamond Mine was Purchased for 14,000gns at Weeton Dispersal Sale December 2014 setting a new breed record for a 10 month old calf.
- Diamond Mine has a Replacement index of €135 combined with an exception carcass weight figure of +22kgs
- Daughter Antfield Una was Junior female reserve champion national calf show 2021.

Scan QR Code  
for most  
recent proof



Diamond Mine Son

- Weeton Lord Heath M367
- Weeton Diamond Mist M351
- Carrington Park Time On B7
- Blelack Lady Heather J169
- Gh Coverboy Eric 110R
- Big Sky Diamond Mist 350



# Horatio

HW LORD HORATIO V538  
DOB: 03/03/19

Pedigree Status:

Code: **AA6682**  
Myostatin: +/-

PRESTIGE  
*Angus*



Star Rating (Within Breed)	Index ICBF, Sept '21 Genotype Incl.	€ Value	Rel	Star Rating (Across Breed)
★★★★★	Replacement Index	€90	38% (Low)	★★★★★
★★★★★	Terminal Index	€79	41% (Too Low)	★★★★★
★★★★★	DairyBeef Index	€84	42 % (Average)	★★★★★
Expected Progeny Performance				
Calving Difficulty	Beef Heifers (% 3&4)	5.1%	42% (Too Low)	5.6 Records
	Beef Cows (% 3&4)	3.6%	64% (Low)	
★★★★★	Gestation Length (days)	-0.5 days	35% (Average)	★★★★★
★★★★★	Docility (Scale)	0.01 Scale	35 % (Too Low)	★★★★★
★★★★★	Carcass Weight (Kg)	14.0 Kg	40 % (Average)	★★★★★
★★★★★	Carcass Conf. (Scale 1-15)	0.78 Scale	35 % (Too Low)	★★★★★
Expected Daughter Performance				
	Daughter calving diff (% 3&4)	7.5 %	52 % (High)	
★★★★★	Daughter milk (Kg)	9.4 Kg	38 % (2.3)	★★★★★
★★★★★	Daughter calving interval (d)	-1.6 days	32 % (283)	★★★★★



Sire: Netherton Kracker

- Horatio is a long, powerful, well-muscled, correct young bull
- Sired by Netherton Kracker (also sire of Farghal) and an exceptional breeding cow
- From the renowned Lady Heather cow family

Scan QR Code  
for most  
recent proof



Netherton Kracker P790  
 Jerusalem Lady Heather P298  
 S A V Brave 8320  
 Netherton Karama K574  
 Rawburn Julio Eric L249  
 Jerusalem Lady Heather F106



Rawburn Julio Eric Daughter

# Matteo

INTELAGRI MATTEO E.T. (ET)

DOB:03/06/2015

Pedigree Status:

Code: **AA4089**

Myostatin: +/-

PRESTIGE  
*Angus*



Star Rating (Within Breed)	Index ICBF, Sept '21 Genotype Incl.	€ Value	Rel	Star Rating (Across Breed)
★★★★★★	Replacement Index	€127	76% (High)	★★★★★★
★★★★★★	Terminal Index	€80	94% (V High)	★★★★★★
★★★★★★	DairyBeef Index	€109	96% (V High)	★★★★★★

#### Expected Progeny Performance

Calving Difficulty	Beef Heifers (% 3&4)	4.4%	98% (V High)	
	Beef Cows (% 3&4)	1.9%	97% (V High)	1231 Records
★★★★★★	Gestation Length (days)	-3.9 days	99% (V High)	★★★★★★
★★★★★★	Docility (Scale)	-0.03 Scale	98% (V High)	★★★★★★
★★★★★★	Carcass Weight (Kg)	6.8 Kg	99% (V High)	★★★★★★
★★★★★★	Carcass Conf. (Scale 1-15)	0.72 Scale	99% (V High)	★★★★★★

#### Expected Daughter Performance

	Daughter calving diff (% 3&4)	8 %	67% (High)	
★★★★★★	Daughter milk (Kg)	4.1 Kg	69% (High)	★★★★★★
★★★★★★	Daughter calving interval (d)	-6 days	50% (Average)	★★★★★★

- Easy calving, suitable for pedigree and commercial maidens
- Use to improve calving ease and gestation length without compromising on performance
- From the renowned Missie cow family

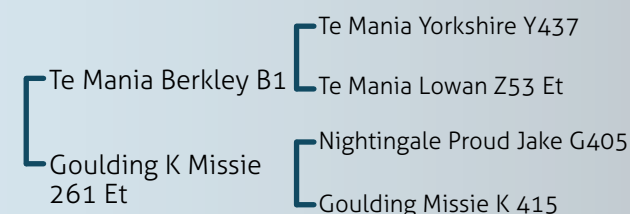
Scan QR Code  
for most  
recent proof



Dam: Goulding K Missie 261 Et



Matteo Son





# AgriNet

The image shows a smartphone screen with the AgriNet HerdApp interface. At the top, there's a teal header with the text 'Farm Reports' and four icons: a grid for 'Home', a gear for 'Settings', a circular arrow for 'Sync', and a hamburger menu for 'Menu'. The 'AgriNet HerdApp' logo is on the right. Below the header, there's a row of tabs: 'Jobs', 'Stock', 'Calving', 'Fertility', and 'Problems'. The 'Jobs' tab is selected, highlighted with a blue underline. Below the tabs is a table with four columns: 'Num', 'Jobs', 'Settings', and 'Cur'. The table lists various farm tasks with their corresponding numbers, descriptions, settings icons (gears), and status icons (stars). A green line connects the 'Jobs' tab to the 'Manage your farm efficiently' text block.

Farm Reports				
Home Settings Sync Menu AgriNet HerdApp				
Jobs	Stock	Calving	Fertility	Problems
Num	Jobs	Settings	Cur	
0	Calves to register/get card			
0	Freshly Calved Cows (in last 7 days)	⚙		
24	Due to calve (in the next 7 days)	⚙		
19	Due to dry (in the next 60 days)	⚙		
182	Cows due serve (35 days after last calve)	⚙	★	
131	Heifers due serve (365 days after birth)	⚙	★	
0	Due to repeat (18 to 24 day cycle)	⚙	★	
163	Cows not seen in heat (42 days calved)	⚙	★	
100	Heifers not seen in heat (450 days born)	⚙	★	
115	Due a pregnancy test (30 days served)	⚙	★	

## New: Beef Margins Report

## Manage your farm efficiently

Links directly to agfood and ICBF and is designed to manage all the key day to day functions on a typical Irish farm.

### WE'RE HERE TO HELP.

Unlimited training is available as you proceed, step by step, at your own pace.  
email: [herdapp@agrinet.ie](mailto:herdapp@agrinet.ie)  
call: 046-9245118 or 046-9249964



PART OF YOUR FARM

Download our app now

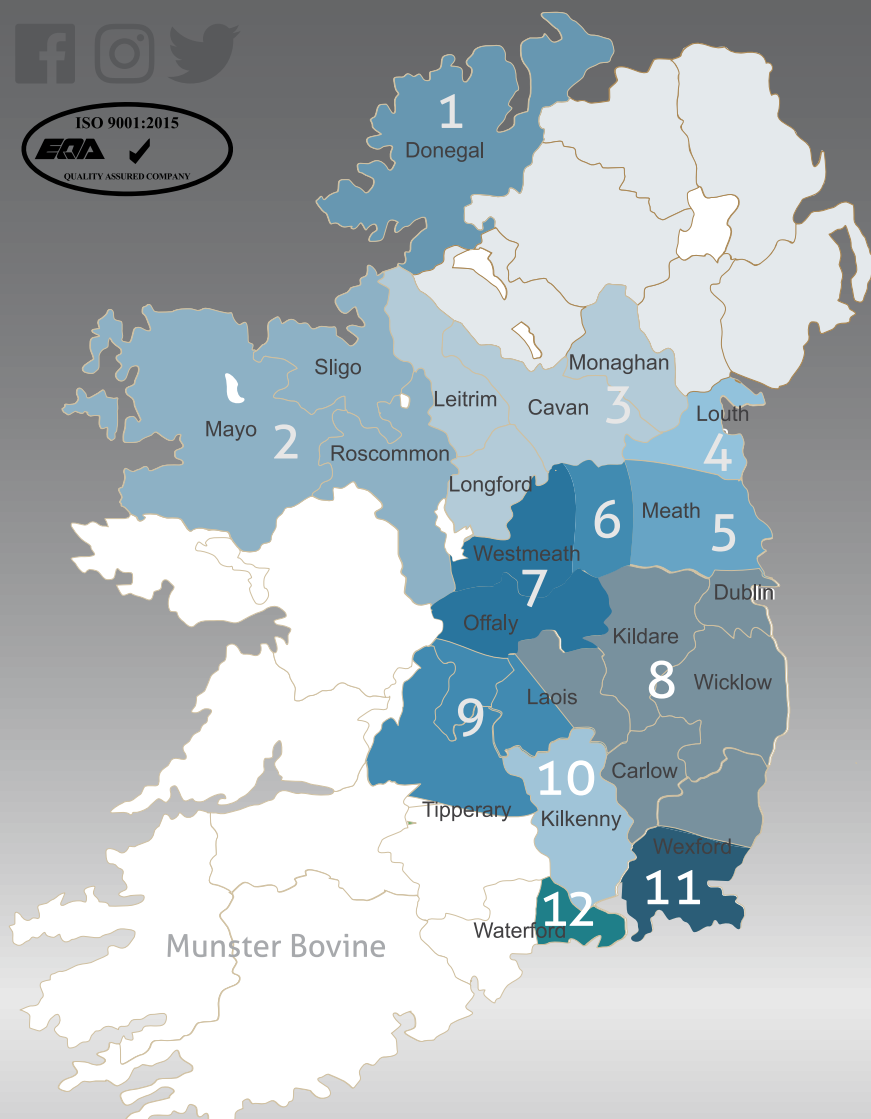


Scan QR Code  
for details



Call 046 924 9964 for queries nad support





## Breeding Advisor & Semen Sales



**Gerard McCool 1**  
087 - 2057588  
Donegal



**Martin Regan 2**  
086 - 8216253  
Sligo, Mayo, Roscommon



**Deirdre Toal 3**  
087 - 2599314  
Monaghan, Longford, Cavan, Leitrim



**John McDaniel 4**  
087 - 2360318  
Louth & Inniskeen Area



**Michael Quinn 5**  
086 - 3892908  
East Meath, North Dublin



**Leo Davis 6**  
086 - 8197114  
Kells Area & Westmeath East



**Violet Nevin 7**  
087 - 6253395  
Westmeath, North Offaly



**Trevor Hanly 8**  
087 - 2272446  
Carlow, Wicklow, Kildare, E Laois, Nth Wexford



**Sean Hayes 9**  
087 - 2757835  
Tipperary, West Laois, South Offaly



**Denis Dalton 10**  
087 - 6785875  
Kilkenny



**Ger Power 10**  
086 - 2158505  
Kilkenny



**John Fogarty 10**  
087 - 6752401  
Part of Tipperary & Kilkenny



**Seamus Hughes**  
087 - 2331235  
Sales Manager



**Shane Leane**  
086 - 7514121  
Technical Sales Manager



**John Griffith**  
086 - 8431624  
West of Ireland Area Manager



**Eugene Kehoe 11**  
087 - 6842846  
South Wexford



**David Phelan 12**  
086 - 8959558  
East Waterford