

OCTOBER
2022
ICBF Proofs

PRESTIGE CHAROLAIS SIREs 2023

PROGRESSIVE

GENETICS

PRESTIGE
Charolais 2023

Alfie Shaw®

Contents

Name	Page
ORBI	1
CORBAUN RORY	2
CLOONRADOON RICKY	3
RECIF	4
GRANGWOOD ROYAL OAK	5
LAPON	6
SULTAN	7
ROMARIN	8
FIRST (Pre Order)	9
MELOMAN (Pre Order)	9
OMEGA	10
GIONO (Pre Order)	11
MERLIN P (Pre Order)	11
VOIMO (Pre Order)	12
HAMEL (Pre Order)	13
EPERNAY (Pre Order)	14
SUNDAY	15

Dear Pedigree Breeder,

Welcome to our new Prestige Charolais catalogue. The Prestige Selection is a new range of elite bulls which we at Progressive Genetics have chosen for you, the pedigree breeder. These sires have been carefully selected & represent the best Charolais genetics available globally.

The Progressive Genetics team are always available to provide professional advice to enable you to achieve the breeding goals for your herd.

Please note many of the sires featured are 'pre-order' & will not be carried by your A.I. technician, these sires should be pre-ordered from Progressive Genetics at least three weeks before the semen will be needed. You can call your local representative, order on-line from progressivegenetics.ie or call the office.

Brendan Scanlon
Chief Executive Officer
Progressive Genetics Co-Op Society

PROGRESSIVE
GENETICS

Cover: Grangwood Royal Oak

Below: Grangwood Jolly Holly, Full sister to Royal Oak.



Note: Our technicians will store privately owned straws for breeders. While every care and precaution will be taken with privately owned straws, Progressive Genetics or our Technicians can not be held responsible for any loss or damage to these straws.



Star Rating (Within Breed)	Index ICBF, Oct '22 <small>Genotype Incl.</small>	€ Value	Rel	Star Rating (Across Breed)
★★★★★	Replacement Index	€85	44% (Average)	★★★★★
★★★★★	Terminal Index	€145	52% (Average)	★★★★★
★★★★★	DairyBeef Index	€62	44 % (Average)	★★★★★
Expected Progeny Performance				
Calving Difficulty	Beef Heifers (% 3&4)	6.8%	36% (Low)	2 Records
	Beef Cows (% 3&4)	4.0%	95% (V High)	375 Records
★★★★★	Gestation Length (days)	2.0 days	95% (V High)	★★★★★
★★★★★	Docility (Scale)	-0.03 Scale	62 % (High)	★★★★★
★★★★★	Carcass Weight (Kg)	38.7 Kg	43 % (Average)	★★★★★
★★★★★	Carcass Conf. (Scale 1-15)	1.7 Scale	42 % (Average)	★★★★★
Expected Daughter Performance				
	Daughter calving diff (% 3&4)	4.0 %	53 % (Average)	
★★★★★	Daughter milk (kg)	0.2 Kg	40 % (Average)	★★★★★
★★★★★	Daughter calving interval (d)	-2.2 days	33 % (Low)	★★★★★



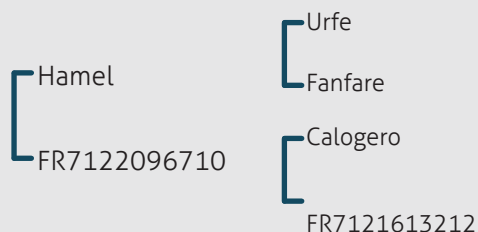
Goldstar Tina, Orbi daughter bred by Martin Ryan, Goldstar Charolais



Pedigree Orbi daughter bred by Martin Ryan, Goldstar Charolais

- Orbi is one of the easiest calving CH bulls available.
- Suitable for pedigree maidens.
- Progeny are correct, with good skeletal development and square plates.

Linear	
MUS	N/A
SKE	N/A
FUN	N/A



Scan QR
code for
most
recent
proof



Progressive Ataxie - Non Carrier

Breeding for a better future www.progressivegenetics.ie 0818 20 20 50

Rory

CORBAUN RORY
DOB:12/06/2020

Code: **CH8334**

Pedigree Status: PED

Myostatin: Q204X/+



PRESTIGE
Charolais



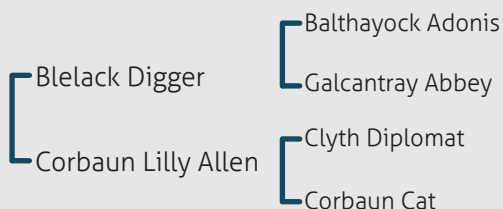
Star Rating (Within Breed)	Index ICBF, Oct '22 <small>Genotype Incl.</small>	€ Value	Rel	Star Rating (Across Breed)
★★★★★	Replacement Index	€113	48% (Average)	★★★★★
★★★★★	Terminal Index	€149	49% (Average)	★★★★★
★★★★★	DairyBeef Index	€16	44 % (Average)	★★★★★
Expected Progeny Performance				
Calving Difficulty	Beef Heifers (% 3&4)	10.7%	49% (Average)	0 Records
	Beef Cows (% 3&4)	7.5%	73% (High)	0 Records
★★★★★	Gestation Length (days)	2.4 days	45% (Average)	★★★★★
★★★★★	Dolcity (Scale)	0.07 Scale	46 % (Average)	★★★★★
★★★★★	Carcass Weight (Kg)	43.8 Kg	47 % (Average)	★★★★★
★★★★★	Carcass Conf. (Scale 1-15)	1.94 Scale	46 % (Average)	★★★★★
Expected Daughter Performance				
	Daughter calving diff (% 3&4)	6.0 %	62 % (High)	
★★★★★	Daughter milk (kg)	1.6 Kg	46 % (Average)	★★★★★
★★★★★	Daughter calving interval (d)	-1.2 days	43 % (Average)	★★★★★



Corbaun Rory

- Sired by Blelack Digger and a Clyth Diplomat dam.
- Rory is a long, powerful, very heavily muscled bull.
- An exceptional terminal sire, +44 kgs carcass weight.
- We await his first calves with high expectations!

Linear	
MUS	101
SKE	118
FUN	94



Grand sire, Clyth Diplomat

Progressive Ataxie - Non Carrier

Breeding for a better future www.progressivegenetics.ie 0818 20 20 50

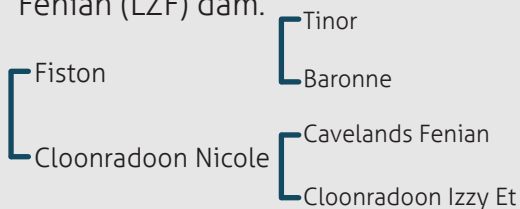


Star Rating (Within Breed)	Index ICBF, Oct '22 <small>Genotype Incl.</small>	€ Value	Rel	Star Rating (Across Breed)
★★★★★	Replacement Index	€93	49% (Average)	★★★★★
★★★★★	Terminal Index	€146	51% (Average)	★★★★★
★★★★★	DairyBeef Index	€48	49 % (Average)	★★★★★
Expected Progeny Performance				
Calving Difficulty	Beef Heifers (% 3&4)	14.7%	53% (Average)	0 Records
	Beef Cows (% 3&4)	7.2%	76% (High)	4 Records
★★★★★	Gestation Length (days)	3.3 days	46% (Average)	★★★★★
★★★★★	Docility (Scale)	0.09 Scale	47 % (Average)	★★★★★
★★★★★	Carcass Weight (Kg)	39.6 Kg	46 % (Average)	★★★★★
★★★★★	Carcass Conf. (Scale 1-15)	2.22 Scale	47 % (Average)	★★★★★
Expected Daughter Performance				
	Daughter calving diff (% 3&4)	2.0 %	64 % (High)	
★★★★★	Daughter milk (kg)	-3.9 Kg	48 % (Average)	★★★★★
★★★★★	Daughter calving interval (d)	-2.6 days	46 % (Average)	★★★★★



Cloonradoon Ricky

- Ricky's first calves were easily born and look promising.
- Ricky himself has matured into a super looking bull with an outstanding hindquarter.
- Sired by the legend Fiston (FSZ) from a Cavelands Fenian (LZF) dam.



Linear	
MUS	114
SKE	108
FUN	101

Scan QR code for most recent proof



Sire, the legendary Fiston

Progressive Ataxia - Non Carrier



Star Rating (Within Breed)	Index ICBF, Oct '22 <small>Genotype Incl.</small>	€ Value	Rel	Star Rating (Across Breed)
★★★★★	Replacement Index	€94	37% (Low)	★★★★★
★★★★★	Terminal Index	€135	41% (Average)	★★★★★
★★★★★	DairyBeef Index	€53	35 % (Low)	★★★★★
Expected Progeny Performance				
Calving Difficulty	Beef Heifers (% 3&4)	7.2%	34% (Low)	0 Records
	Beef Cows (% 3&4)	4.4%	66% (High)	0 Records
★★★★★	Gestation Length (days)	1.1 days	33% (Low)	★★★★★
★★★★★	Docility (Scale)	0.06 Scale	33 % (Low)	★★★★★
★★★★★	Carcass Weight (Kg)	35.3 Kg	38 % (Low)	★★★★★
★★★★★	Carcass Conf. (Scale 1-15)	1.49 Scale	38 % (Low)	★★★★★
Expected Daughter Performance				
	Daughter calving diff (% 3&4)	3.6 %	50 % (Average)	
★★★★★	Daughter milk (kg)	-0.9 Kg	37 % (Low)	★★★★★
★★★★★	Daughter calving interval (d)	-1.3 days	32 % (Low)	★★★★★



Recif

- Recif is an outstanding specimen of the Charolais breed.
- He is powerful, long, wide, correct and full of beef.
- His pedigree is a full sire stack of proven French AI bulls; Jarret x Hamel x Azelier x Populair.



Linear	
MUS	N/A
SKE	N/A
FUN	N/A



Scan QR
code for
most
recent
proof



Sire, Jarret

Progressive Ataxie - Non Carrier

Royal Oak ET

GRANGWOOD ROYAL OAK ET

DOB:22/10/2020

Pedigree Status: PED

Code: CH8262

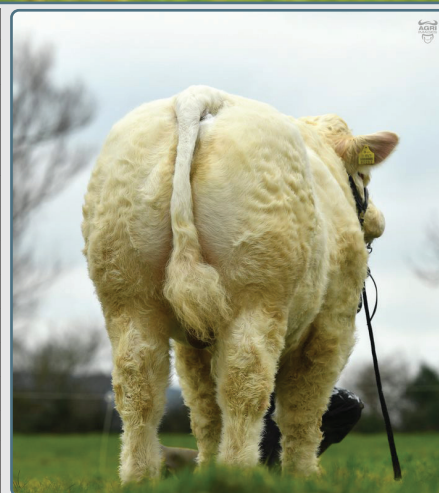
Myostatin: Q204X/+



PRESTIGE
Charolais



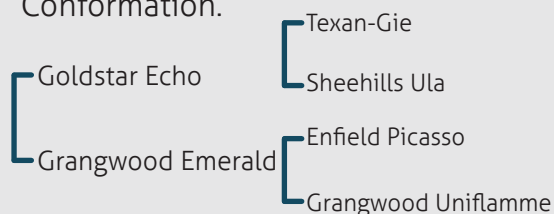
Star Rating (Within Breed)	Index ICBF, Oct '22 <small>Genotype Incl.</small>	€ Value	Rel	Star Rating (Across Breed)
★★★★★	Replacement Index	€54	50% (Average)	★★★★★
★★★★★	Terminal Index	€165	53% (Average)	★★★★★
★★★★★	DairyBeef Index	€16	47 % (Average)	★★★★★
Expected Progeny Performance				
Calving Difficulty	Beef Heifers (% 3&4)	12.7%	50% (Average)	0 Records
	Beef Cows (% 3&4)	7.3%	74% (High)	1 Record
★★★★★	Gestation Length (days)	2.2 days	48% (Average)	★★★★★
★★★★★	Docility (Scale)	0.07 Scale	57 % (Average)	★★★★★
★★★★★	Carcass Weight (Kg)	41.1 Kg	53 % (Average)	★★★★★
★★★★★	Carcass Conf. (Scale 1-15)	2.33 Scale	49 % (Average)	★★★★★
Expected Daughter Performance				
	Daughter calving diff (% 3&4)	4.8 %	63 % (High)	
★★★★★	Daughter milk (kg)	-8.7 Kg	49 % (Average)	★★★★★
★★★★★	Daughter calving interval (d)	-3.5 days	44 % (Average)	★★★★★



Grangwood Royal Oak

- Royal Oak is an exceptional quality, stylish, correct bull.
- He is sired by Goldstar Echo (GHX) from a proven cow family.
- He ranks in the top 2% of the CH breed for Carcass Conformation.

Linear	
MUS	137
SKE	117
FUN	139



Scan QR
code for
most recent
proof



Grangwood Jolly Holly, full sister to Royal Oak. She was Junior Female Calf Champion at the Charolais National Show 2015.

Progressive Ataxie - Non Carrier



Star Rating (Within Breed)	Index ICBF, Oct '22 <small>Genotype Incl.</small>	€ Value	Rel	Star Rating (Across Breed)
★★★★★★	Replacement Index	€102	69% (High)	★★★★★★★
★★★★★★	Terminal Index	€157	94% (V High)	★★★★★★★
★★★★★★	DairyBeef Index	€94	91 % (V High)	★★★★★★★
Expected Progeny Performance				
Calving Difficulty	Beef Heifers (% 3&4)	8.2%	93% (V High)	332 Records
	Beef Cows (% 3&4)	4.9%	99% (V High)	6999 Records
★★★★★★★	Gestation Length (days)	2.2 days	99% (V High)	★★★★★★★
★★★★★★★	Dolality (Scale)	0.07 Scale	99 % (V High)	★★★★★★★
★★★★★★★	Carcass Weight (Kg)	41 Kg	99 % (V High)	★★★★★★★
★★★★★★★	Carcass Conf. (Scale 1-15)	2.23 Scale	99 % (V High)	★★★★★★★
Expected Daughter Performance				
	Daughter calving diff (% 3&4)	5.4 %	58 % (Average)	
★★★★★★★	Daughter milk (kg)	-2.7 Kg	61 % (High)	★★★★★★★
★★★★★★★	Daughter calving interval (d)	-0.2 days	43 % (Average)	★★★★★★★



Lapon son Tonyglasson Sean, bred by Martin Hughes.

- A legend! Only 4.9% calving difficulty on cows and in the top 1% on carcass weight & the top 3% on carcass conformation across breed.
- Progeny are very functional; correct on legs and feet.



Linear	
MUS	112
SKE	119
FUN	103

Scan QR code for most recent proof



Lapon son, Galloway Scotty sold €5600 in Tullamore, November 2022.

Progressive Ataxie - Carrier, one copy

Sultan

SULTAN
DOB:14/11/2020

Code: **CH8577**
Pedigree Status: PED

Myostatin: +/-



PRESTIGE
Charolais



Star Rating (Within Breed)	Index ICBF, Oct '22 <small>Genotype Incl.</small>	€ Value	Rel	Star Rating (Across Breed)
★★★★★	Replacement Index	€93	38% (Low)	★★★★★
★★★★★	Terminal Index	€122	41% (Average)	★★★★★
★★★★★	DairyBeef Index	€13	35 % (Low)	★★★★★
Expected Progeny Performance				
Calving Difficulty	Beef Heifers (% 3&4)	9.2%	34% (Low)	0 Records
	Beef Cows (% 3&4)	4.0%	67% (High)	0 Records
★★★★★	Gestation Length (days)	1.4 days	34% (Low)	★★★★★
★★★★★	Docility (Scale)	0.08 Scale	33 % (Low)	★★★★★
★★★★★	Carcass Weight (Kg)	33.6 Kg	39 % (Low)	★★★★★
★★★★★	Carcass Conf. (Scale 1-15)	1.24 Scale	39 % (Low)	★★★★★
Expected Daughter Performance				
	Daughter calving diff (% 3&4)	4.0 %	50 % (Average)	
★★★★★	Daughter milk (kg)	0.4 Kg	39 % (Low)	★★★★★
★★★★★	Daughter calving interval (d)	-1.7 days	32 % (Low)	★★★★★

- Sultan is a very complete bull with super width through the body.
- His sire, Jarret, is a proven easy calving sire and a consistent breeder of quality.

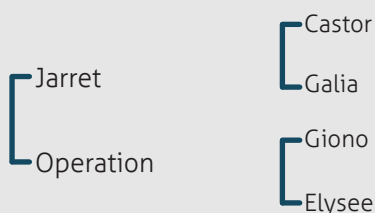
Linear	
MUS	N/A
SKE	N/A
FUN	N/A



Sire, Jarret



Giono daughter (Giono Semen Available)



Scan QR
code for
most recent
proof

Progressive Ataxie - Non Carrier

Romarin Pp

ROMARIN Pp
DOB:23/09/2020

Code: **CH8580**

Pedigree Status: PDP

Myostatin: +/-



PRESTIGE
Charolais



Star Rating (Within Breed)	Index ICBF, Oct '22 Genotype Incl.	€ Value	Rel	Star Rating (Across Breed)
★★★★★	Replacement Index	€83	33% (Low)	★★★★★
★★★★★	Terminal Index	€91	35% (Low)	★★★★★
★★★★★	DairyBeef Index	€-26	32 % (Low)	★★★★★
Expected Progeny Performance				
Calving Difficulty	Beef Heifers (% 3&4)	12.8%	31% (Low)	0 Records
	Beef Cows (% 3&4)	5.2%	60% (High)	0 Records
★★★★★	Gestation Length (days)	2.6 days	30% (Low)	★★★★★
★★★★★	Dolcity (Scale)	0.05 Scale	30 % (Low)	★★★★★
★★★★★	Carcass Weight (Kg)	23.4 Kg	30 % (Low)	★★★★★
★★★★★	Carcass Conf. (Scale 1-15)	1.4 Scale	30 % (Low)	★★★★★
Expected Daughter Performance				
	Daughter calving diff (% 3&4)	4.2 %	49 % (Average)	
★★★★★	Daughter milk (kg)	-1 Kg	30 % (Low)	★★★★★
★★★★★	Daughter calving interval (d)	-2.7 days	30 % (Low)	★★★★★



Romarin Pp

- Romarin Pp is an exceptional quality heterozygous polled bull.
- He is a very correct, functional, well-balanced & well-muscled bull.
- His pedigree is a sire stack of proven high performing, easy-calving French AI bulls – Niger PP X Calogero X Habit X Harnois.

Linear	
MUS	N/A
SKE	N/A
FUN	N/A



Niger PP, sire of Romarin Pp

Niger Pp
Jasmine

Ghana Pp
Helline
Calogero
Badine

Progressive Ataxie - Non Carrier

Scan QR
code for
most recent
proof



Breeding for a better future www.progressivegenetics.ie 0818 20 20 50

First

Code: CH2216

FIRST

DOB: 29/10/2010

Pedigree Status: PED

Myostatin: Q204X/+

PRESTIGE
Charolais



Star Rating (Within Breed)	ICBF, Oct '22 Genotype Incl.	€ Value	Rel	Star Rating (Across Breed)
★★★★★	Replacement Index	€91	76% (V High)	★★★★★
★★★★★	Terminal Index	€160	86% (High)	★★★★★
★★★★★	DairyBeef Index	€31	71% (High)	★★★★★

Expected Progeny Performance

Calving Difficulty	Beef Heifers (% 3&4)	8.5%	75% (High)	42
	Beef Cows (% 3&4)	3.4%	97% (V High)	151
★★★★★	Gestation Length (days)	0.59 d	94% (V High)	★★★★★
★★★★★	Docility (Scale)	0.08	88% (V High)	★★★★★
★★★★★	Carcass Weight (Kg)	40.7 Kg	95% (V High)	★★★★★
★★★★★	Carcass Conf (Scale 1 - 15)	2.0 Scale	93% (V High)	★★★★★

Expected Daughter Performance

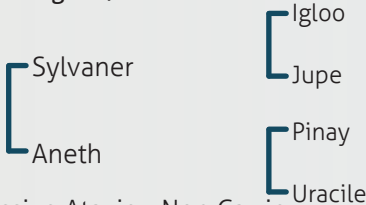
	Daughter calv diff (% 3 & 4)	2.7 %	72% (High)	
★★★★★	Daughter milk (kg)	-0.3 Kg	84% (V High)	★★★★★
★★★★★	Daughter calv interval (d)	0.3 days	52% (Average)	★★★★★

- An exceptional bull to improve growth.
- Progeny have massive performance with good muscle development.
- Suitable for second calvers.

Linear	
MUS	114
SKE	105
FUN	108



Daughter, Skidoo96 Odell



Scan QR code for most recent proof



Progressive Ataxie - Non Carrier

Meloman

Code: CH6115

MELOMAN

DOB: 02/10/2016

Pedigree Status: PED

Myostatin: +/-

PRESTIGE
Charolais



Star Rating (Within Breed)	ICBF, Oct '22 Genotype Incl.	€ Value	Rel	Star Rating (Across Breed)
★★★★★	Replacement Index	€126	46% (Average)	★★★★★
★★★★★	Terminal Index	€155	58% (Average)	★★★★★
★★★★★	DairyBeef Index	€72	46% (Average)	★★★★★

Expected Progeny Performance

Calving Difficulty	Beef Heifers (% 3&4)	10.9%	35% (Low)	2
	Beef Cows (% 3&4)	4.8%	81% (V High)	0
★★★★★	Gestation Length (days)	0.36 d	52% (Average)	★★★★★
★★★★★	Docility (Scale)	-0.03	34% (Low)	★★★★★
★★★★★	Carcass Weight (Kg)	46.3 Kg	64% (High)	★★★★★
★★★★★	Carcass Conf (Scale 1 - 15)	1.25 Scale	64% (High)	★★★★★

Expected Daughter Performance

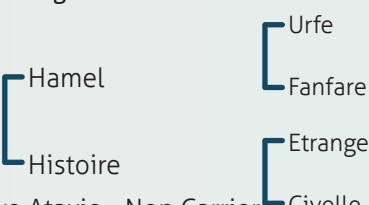
	Daughter calv diff (% 3 & 4)	4.6 %	57% (Average)	
★★★★★	Daughter milk (kg)	3 Kg	49% (Average)	★★★★★
★★★★★	Daughter calv interval (d)	-2.4 days	31% (Low)	★★★★★

- An excellent option for pedigree maidens.
- Easy calving, good growth and conformation.
- Excellent legs and feet.

Linear	
MUS	97
SKE	107
FUN	100



Daughter of Meloman



Scan QR code for most recent proof



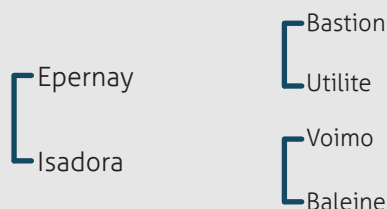
Progressive Ataxie - Non Carrier



Sire: Epernay

Star Rating (Within Breed)	Index ICBF, Oct '22 <small>Genotype Incl.</small>	€ Value	Rel	Star Rating (Across Breed)
★★★★★★	Replacement Index	€108	43% (Average)	★★★★★★★
★★★★★	Terminal Index	€131	50% (Average)	★★★★★★★
★★★	DairyBeef Index	€6	41 % (Average)	★★★
Expected Progeny Performance				
Calving Difficulty	Beef Heifers (% 3&4)	13.4%	36% (Low)	1 Record
	Beef Cows (% 3&4)	7.7%	90% (V High)	129 Records
★★★★★	Gestation Length (days)	2.8 days	87% (V High)	★★★★★★★
★★★★★	Dolcity (Scale)	0.06 Scale	42 % (Average)	★★★★★★★
★★★★★	Carcass Weight (Kg)	39.8 Kg	42 % (Average)	★★★★★★★
★★★★★	Carcass Conf. (Scale 1-15)	1.86 Scale	41 % (Average)	★★★★★★★
Expected Daughter Performance				
	Daughter calving diff (% 3&4)	3.2 %	52 % (Average)	
★★★★★	Daughter milk (kg)	3.4 Kg	41 % (Average)	★★★★★★★
★★★★★	Daughter calving interval (d)	-2.1 days	34 % (Low)	★★★★★★★

- Omega's first crop of calves impress with their length and muscle development.
- Progeny have excellent shape both on the back and hindquarter.
- The perfect weanling producer.



Progressive Ataxie - Carrier, one copy

Linear	
MUS	N/A
SKE	N/A
FUN	N/A

Scan QR code for most recent proof



Epernay son



Epernay son bred by Sevana Moynagh

Giono

Code: CH6118

PRESTIGE
Charolais

GIONO

DOB: 08/01/2011

Pedigree Status: PED

Myostatin: +/-



Star Rating (Within Breed)	ICBF, Oct '22 Genotype Incl.	€ Value	Rel	Star Rating (Across Breed)
★★★★★	Replacement Index	€96	48% (Average)	★★★★★
★★★★★	Terminal Index	€90	59% (Average)	★★★★★
★★★★★	DairyBeef Index	€29	46% (Average)	★★★★★

Expected Progeny Performance

Calving Difficulty	Beef Heifers (% 3 & 4)	14.0%	32% (Low)	1
	Beef Cows (% 3 & 4)	6.4%	83% (V High)	7
★★★★★	Gestation Length (days)	2.64 d	33% (Low)	★★★★★
★★★★★	Docility (Scale)	0.06	34% (Low)	★★★★★
★★★★★	Carcass Weight (Kg)	30.2 Kg	67% (High)	★★★★★
★★★★★	Carcass Conf (Scale 1 - 15)	0.97 Scale	65% (High)	★★★★★

Expected Daughter Performance

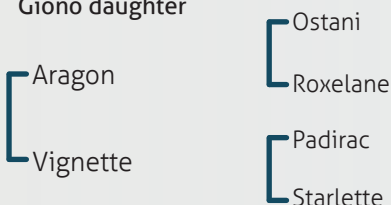
	Daughter calv diff (% 3 & 4)	4.2 %	51 % (Average)	
★★★★★	Daughter milk (kg)	5.1 Kg	64 % (High)	★★★★★
★★★★★	Daughter calv interval (d)	-2.2 days	31 % (Low)	★★★★★

- Giono transmits exceptional growth and shape to his progeny.
- A high muscle bull free of myostatin!
- Heavily used bull in France.

Linear	
MUS	113
SKE	107
FUN	93



Giono daughter



Scan QR code for most recent proof



Progressive Ataxie - Non Carrier

Merlin P

Code: CH6121

PRESTIGE
Charolais

MERLIN P

DOB: 03/11/2016

Pedigree Status: PED

Myostatin: Q204X/+



Star Rating (Within Breed)	ICBF, Oct '22 Genotype Incl.	€ Value	Rel	Star Rating (Across Breed)
★★★★★	Replacement Index	€139	44% (Average)	★★★★★
★★★★★	Terminal Index	€174	56% (Average)	★★★★★
★★★★★	DairyBeef Index	€93	44% (Average)	★★★★★

Expected Progeny Performance

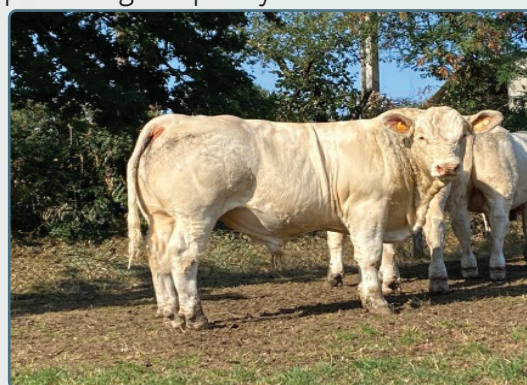
Calving Difficulty	Beef Heifers (% 3 & 4)	12.6%	30% (Low)	0
	Beef Cows (% 3 & 4)	7.61%	82% (V High)	0
★★★★★	Gestation Length (days)	2.53 d	32% (Low)	★★★★★
★★★★★	Docility (Scale)	0.04	30% (Low)	★★★★★
★★★★★	Carcass Weight (Kg)	49.7 Kg	62% (High)	★★★★★
★★★★★	Carcass Conf (Scale 1 - 15)	2.2 Scale	63% (High)	★★★★★

Expected Daughter Performance

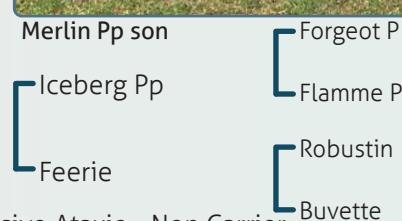
	Daughter calv diff (% 3 & 4)	3.8 %	49 % (Average)	
★★★★★	Daughter milk (kg)	6.2 Kg	50 % (Average)	★★★★★
★★★★★	Daughter calv interval (d)	-2.1 days	30 % (Low)	★★★★★

- No. 3 CH available om Terminal Index.
- An excellent quality heterozygous polled bull.
- Average calving, suitable for 2nd calvers.
- Start your polled programme without compromising on quality.

Linear	
MUS	97
SKE	99
FUN	99



Merlin Pp son



Scan QR code for most recent proof



Progressive Ataxie - Non Carrier



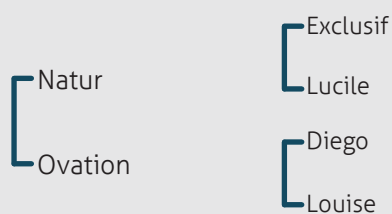
Star Rating (Within Breed)	Index ICBF, Oct '22 <small>Genotype Incl.</small>	€ Value	Rel	Star Rating (Across Breed)
★★★★★★	Replacement Index	€122	84% (V High)	★★★★★★
★★★★★	Terminal Index	€131	88% (V High)	★★★★★★
★★★☆☆	DairyBeef Index	-€1.53	70 % (High)	★★★☆☆
Expected Progeny Performance				
Calving Difficulty	Beef Heifers (% 3&4)	10.6%	85% (V High)	95 Records
	Beef Cows (% 3&4)	4.1%	98% (V High)	334 Records
★★★★★★	Gestation Length (days)	1.76 days	97% (V High)	★★★★★★
★★★★★★	Docility (Scale)	0.07 Scale	94 % (V High)	★★★★★★
★★★★★	Carcass Weight (Kg)	32.3 Kg	97 % (V High)	★★★★★★
★★★★★	Carcass Conf. (Scale 1-15)	1.88 Scale	97 % (V High)	★★★★★★
Expected Daughter Performance				
	Daughter calving diff (% 3&4)	3.66 %	79 % (High)	
★★★★★★	Daughter milk (kg)	4.4 Kg	91 % (V High)	★★★★★★
★★★★★	Daughter calving interval (d)	-1.62 days	63 % (High)	★★★★★★



Voimo cow, bred by Sebana Moynagh

- A proven safe option for pedigree maidens
- Voimo daughters make great brood cows, high milk (+4.4kgs) and good fertility.
- Excellent temperament.
- Short gestation sire.

Linear	
MUS	106
SKE	107
FUN	91



Voimo daughter, bred by Sebana moynagh



Star Rating (Within Breed)	Index ICBF, Oct '22 <small>Genotype Incl.</small>	€ Value	Rel	Star Rating (Across Breed)
★★★★★★	Replacement Index	€117	52% (Average)	★★★★★★
★★★★★★	Terminal Index	€182	62% (High)	★★★★★★
★★★★★★	DairyBeef Index	€65	49 % (Average)	★★★★★★★
Expected Progeny Performance				
Calving Difficulty	Beef Heifers (% 3&4)	10.5%	39% (Low)	3 Records
	Beef Cows (% 3&4)	5.1%	86% (V High)	23 Records
★★★★★★	Gestation Length (days)	1.83 days	76% (High)	★★★★★★★
★★★☆☆	Dolicity (Scale)	-0.02 Scale	47 % (Average)	★★★★★★★
★★★★★★	Carcass Weight (Kg)	54.1 Kg	67 % (High)	★★★★★★
★★★★★★	Carcass Conf. (Scale 1-15)	1.85 Scale	67 % (High)	★★★★★★
Expected Daughter Performance				
	Daughter calving diff (% 3&4)	3.98 %	60 % (High)	
★★★★★★	Daughter milk (kg)	2.2 Kg	68 % (High)	★★★★★★★
★★★★★★	Daughter calving interval (d)	-2.33 days	34 % (Low)	★★★★★★★

- Hamel is a very complete bull, good on growth, shape, temperament and milk.
- Easy calving CH, suitable for 2nd calvers.
- Top 1% of the CH breed on Terminal Index.



Scan QR
code for
most
recent
proof



Hamel son, Orbi CH6490



Hamel son

Linear	
MUS	97
SKE	110
FUN	101

Epernay

EPERNAY
DOB:13/09/2009

Code: **CH6130**
Pedigree Status: PED

Myostatin: Q204X/+

PRESTIGE
Charolais



Star Rating (Within Breed)	Index ICBF, Oct '22 <small>Genotype Incl.</small>	€ Value	Rel	Star Rating (Across Breed)
★★★★★★	Replacement Index	€119	51% (Average)	★★★★★★
★★★★★★	Terminal Index	€159	62% (High)	★★★★★★
★★★★★★	DairyBeef Index	€49	48 % (Average)	★★★★★★
Expected Progeny Performance				
Calving Difficulty	Beef Heifers (% 3&4)	16.8%	30% (Low)	0 Records
	Beef Cows (% 3&4)	6.7%	92% (V High)	15 Records
★★★★★★	Gestation Length (days)	2.57 days	70% (High)	★★★★★★
★★★★★★	Docility (Scale)	0.04 Scale	47 % (Average)	★★★★★★
★★★★★★	Carcass Weight (Kg)	52.2 Kg	67 % (High)	★★★★★★
★★★★★★	Carcass Conf. (Scale 1-15)	1.71 Scale	67 % (High)	★★★★★★
Expected Daughter Performance				
	Daughter calving diff (% 3&4)	3.53 %	53 % (Average)	
★★★★★★	Daughter milk (kg)	4.8 Kg	66 % (High)	★★★★★★
★★★★★★	Daughter calving interval (d)	-1.79 days	32 % (Low)	★★★★★★

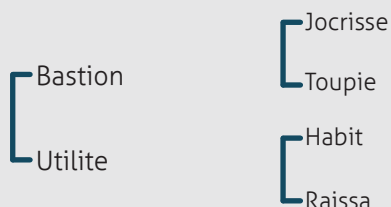


Epernay son



Epernay son

- Epernay is an exceptional sire, strong in many traits.
- Use Epernay to improve size, length, live weight gain, muscle development and milk!
- Progeny have excellent legs and feet.
- Suitable for second calvers.



Linear	
MUS	111
SKE	121
FUN	100

Scan QR
code for
most
recent
proof



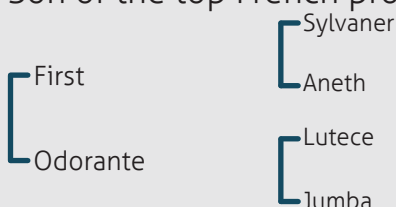


Star Rating (Within Breed)	Index ICBF, Oct '22 <small>Genotype Incl.</small>	€ Value	Rel	Star Rating (Across Breed)
★★★★★	Replacement Index	€62	42% (Average)	★★★★★
★★★★★	Terminal Index	€118	45% (Average)	★★★★★
★★★★★	DairyBeef Index	-€28	40 % (Average)	★★★★★
Expected Progeny Performance				
Calving Difficulty	Beef Heifers (% 3&4)	11.5%	41% (Average)	0 Records
	Beef Cows (% 3&4)	5.6%	69% (High)	0 Records
★★★★★	Gestation Length (days)	1.46 days	43% (Average)	★★★★★
★★★★★	Dolicity (Scale)	0.09 Scale	42 % (Average)	★★★★★
★★★★★	Carcass Weight (Kg)	31.5 Kg	43 % (Average)	★★★★★
★★★★★	Carcass Conf. (Scale 1-15)	1.69 Scale	42 % (Average)	★★★★★
Expected Daughter Performance				
	Daughter calving diff (% 3&4)	4.0 %	55 % (Average)	
★★★★★	Daughter milk (kg)	-1.5 Kg	41 % (Average)	★★★★★
★★★★★	Daughter calving interval (d)	-0.9 days	35 % (Low)	★★★★★



Sunday

- Sunday was performance tested in France where he was one of the top bulls in the centre for live weight gain and muscle development.
- He is an impressive long, very well-muscled bull both on the back and the hindquarter.
- Son of the top French proven sire First.



Linear	
MUS	N/A
SKE	N/A
FUN	N/A



Sire, First

Scan QR
code for
most
recent
proof



ARTOIS (CH2215)



CALOGERO (CH2241)



MOZART (MZT)



MAERDY SINNDAR (SDA)



GOLDSTAR LUDWIG (CH4251)



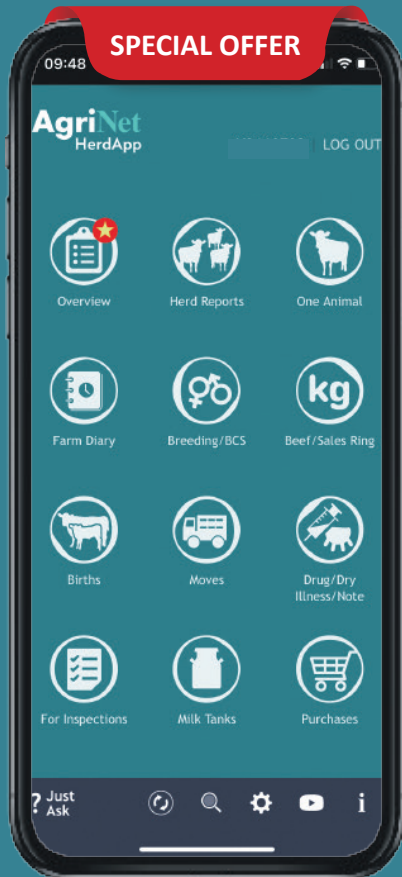
CAVELANDS LEVI (CH4252)





Your **No.1** Farm Management Tool

Everything for compliance, births, movements and remedies



AgriNet HerdApp gives you...

- ✓ 24/7 access to herd data
- ✓ AI & Breeding information
- ✓ Instant calf registrations
- ✓ Detailed animal reports
- ✓ All purchases, sales & deaths
- ✓ Fully Bord Bia Compliant

Our market leading software allows you to make the right management decisions for more profitable farming.

Free 30 day trial
with unlimited access
to all features.

"The best app at the best price."



Scan QR Code
for details



Email: herdapp@agrinet.ie

Call: 046 9249964



Breeding Advisor & Semen Sales



Gerard McCool
087 - 2057588
Donegal



John Griffith
086 - 8431624
Sligo, Mayo,
Roscommon



Deirdre Toal
087 - 2599314
Monaghan, Longford,
Cavan, Leitrim



John McDaniel
087 - 2360318
Louth & Inniskeen Area



Michael Quinn
086 - 3892908
Meath, North Dublin



Leo Davis
086 - 8197114
Kells Area & Westmeath
East



Violet Nevin
087 - 6253395
Westmeath, North
Offaly



Trevor Hanly
087 - 2272446
087 - 9148922
Carlow, Wicklow, Kildare,
E Laois, Nth Wexford



Sean Hayes
087 - 2757835
Tipperary, West Laois,
South Offaly



Denis Dalton
087 - 6785875
Kilkenny



Ger Power
086 - 2158505
Kilkenny



John Fogarty
087 - 6752401
Part of Tipperary &
Kilkenny



Eugene Kehoe
087 - 6842846
South Wexford



David Phelan
086 - 8959558
East Waterford



Richie Smyth
086-1937800
North Kildare area



Martin Regan
086 - 8216253
Beef Specialist, West of
Ireland



Shane Leane
086 - 7514121
Technical Sales
Manager



Seamus Hughes
087 - 2331235
Sales Manager

Milk Recording Contacts

Milk Recording Supervisor
Louise Knight 087-2505723
Emma Behan 086 0667030
Milk Recording Office
Tel: 046-9540606

