



PRESTIGE  
*Angus* 2021

PROGRESSIVE  
  
GENETICS

PRESTIGE

## Contents

Name	Page
HF Alcatraz 60F	3
Coonamble Elevator E11	4
HF Rebel 53Y	5
Young Dale Touch Down 36M	6
Te Mania Berkley B1	7
HW Farghal T516	8
HW Red Doom U104	9
Intelagri Matteo E.T.	10
HW Adonnis T243	10

### Dear Pedigree Breeder,

Welcome to our new Prestige Angus catalogue. The Prestige Selection is a new range of elite bulls which we at Progressive Genetics have chosen for you, the pedigree breeder. These sires have been carefully selected & represent the best Angus genetics available globally.

The Progressive Genetics team are always available to provide professional advice to enable you to achieve the breeding goals for your herd.

Please note many of the sires featured are 'pre-order' & will not be carried by your A.I. technician, these sires should be pre-ordered from Progressive Genetics at least three weeks before the semen will be needed. You can call your local representative, order on-line from [progressivegenetics.ie](http://progressivegenetics.ie) or call the office.

The bulls labelled with a 'pedigree royalty' sticker are in the Angus Society royalty scheme; a royalty is payable on all pedigree progeny registered from these sires in their herdbook.

*Rosalish Goulding*

Rosalish Goulding  
Beef Programme Manager  
National Cattle Breeding Centre



MacG  
Mar'18



Pedigree registration royalty applies to bulls bearing this symbol. For full details check with your local representative

# HF Alcatraz 60F PED

Code: **AA6232**

DOB: 08/01/18

HB No: 2043806US44

Myostatin: +/-

*PRESTIGE*  
*Angus*



Star Rating (Within Breed)	Index ICBF, Oct '20 <small>Genotype Incl.</small>	€ Value	Rel	Star Rating (Across Breed)
★★★★★	<b>Replacement Index</b>	€115	33% (Low)	★★★★★
★★★★★	<b>Terminal Index</b>	€82	35% (Low)	★★★★★
★★★★★	<b>Dairy Beef Index</b>	€104	35% (Low)	★★★★★
<b>Expected Progeny Performance</b>				
Calving Difficulty	Beef Heifers (% 3&4)	7.1%	36% (Low)	0 Beef Records
	Beef Cows (% 3&4)	1.9%	58% (Average)	
★★★★★	Gestation Length (days)	-0.9 days	31% (Low)	★★★★★
★★★★★	Docility (Scale)	0.00 Scale	31% (Low)	★★★★★
★★★★★	Carcass Weight (Kg)	10.6 Kg	31% (Low)	★★★★★
★★★★★	Carcass Conf. (Scale 1-15)	0.93 Scale	31% (Low)	★★★★★
<b>Expected Daughter Performance</b>				
	Daughter calving diff (% 3&4)	6.6%	50% (Average)	
★★★★★	Daughter milk (kg)	8.5 Kg	31% (Low)	★★★★★
★★★★★	Daughter calving interval (d)	-3.2 days	30% (Low)	★★★★★



Sire, May-Way Breakout 1310

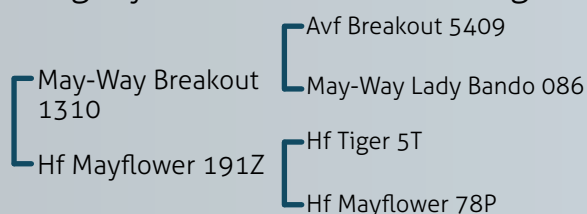


Son, at 8 months



Daughter,  
at 8 months

- HF Alactraz sold for a record price at the Hamilton Farm Sale
- His first crop of calves in Canada are impressive
- Calves are easily born, exhibit excellent breed character, easy fleshing & style
- Progeny are correct on feet & legs



# Coonamble Elevator E11 PED

Code: **S2330**

DOB: 06/03/09

HB No: AANAUSM000000WDCE11

Myostatin: +/-

*PRESTIGE*  
*Angus*

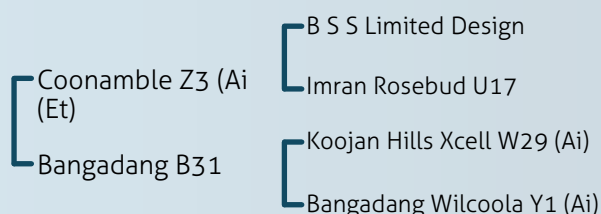


Star Rating (Within Breed)	Index ICBF, Oct '20 <small>Genotype Incl.</small>	€ Value	Rel	Star Rating (Across Breed)
★★★★★★	<b>Replacement Index</b>	€127	51% (Average)	★★★★★★
★★★★★★	<b>Terminal Index</b>	€116	57% (Average)	★★★★★★
★★★★★★	<b>Dairy Beef Index</b>	€137	56% (Average)	★★★★★★
<b>Expected Progeny Performance</b>				
Calving Difficulty	Beef Heifers (% 3&4)	4.0%	54% (Average)	22 Beef Records
	Beef Cows (% 3&4)	1.4%	72% (High)	
★★★★★★	Gestation Length (days)	-2.5 days	74% (High)	★★★★★★
★★★★★★	Dolcility (Scale)	0.00 Scale	57% (Average)	★★★★★★
★★★★★★	Carcass Weight (Kg)	23.1 Kg	63% (High)	★★★★★★
★★★★★★	Carcass Conf. (Scale 1-15)	0.89 Scale	43% (Average)	★★★★★★
<b>Expected Daughter Performance</b>				
	Daughter calving diff (% 3&4)	7.0%	51% (Average)	
★★★★★★	Daughter milk (Kg)	7.8 Kg	59% (Average)	★★★★★★
★★★★★★	Daughter calving interval (d)	-2.8 days	34% (Low)	★★★★★★



Son, Carrigroe Nationwide AA4375

- Elevator has proven himself as a high performance sire - ranking in the top 1% of Angus' for Carcass Weight
- Use to improve performance, skeletal development & docility
- Progeny are very functionally correct - excellent feet & legs
- Joint No. 2 Angus available on Dairy Beef Index (DBI)



Boonaroo Sally K25 HCA K25 by Coonamble Elevator

# HF Rebel 53Y PED

Code: **ZHF**  
DOB: 11/01/11

HB No: AANIRLM000001627442

Myostatin: +/-

PRESTIGE  
*Angus*

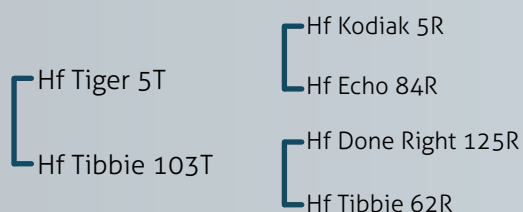


Star Rating (Within Breed)	Index ICBF, Oct '20 Genotype Incl.	€ Value	Rel	Star Rating (Across Breed)
★★★★★★	Replacement Index	€119	75% (High)	★★★★★★
★★★★★★	Terminal Index	€93	85% (V High)	★★★★★★
★★★★★★	Dairy Beef Index	€105	80% (V High)	★★★★★★
Expected Progeny Performance				
Calving Difficulty	Beef Heifers (% 3&4)	4.7%	72% (High)	133 Beef Records
	Beef Cows (% 3&4)	1.6%	89% (V High)	
★★★★★★	Gestation Length (days)	-2.7 days	95% (V High)	★★★★★★
★★★★★★	Docility (Scale)	0.05 Scale	86% (V High)	★★★★★★
★★★★★★	Carcass Weight (Kg)	12.8 Kg	92% (V High)	★★★★★★
★★★★★★	Carcass Conf. (Scale 1-15)	0.89 Scale	90% (V High)	★★★★★★
Expected Daughter Performance				
Daughter calving diff (% 3&4)		8.8%	67% (High)	★★★★★★
Daughter milk (kg)		8.3 Kg	79% (High)	
Daughter calving interval (d)		-5.0 days	49% (Average)	



Sire, HF Tiger 5T

- Rebel has proven himself as a great breeder of males & females
- The daughters are great breeders, with good temperament, lots of milk, nice udders & super fertility
- Recommended for pedigree breeders to produce replacements & bulls for the dairy market



Laheens Rebel, Reserve Male Champion, Elite Sale 2019, sold for €6500

# Young Dale Touch Down 36M

Code: **S394**

DOB: 23/02/02

HB No: AANIRLM\_IMAG\_000226

Myostatin: : +/+

PED *Angus* PRESTIGE



Star Rating (Within Breed)	Index ICBF, Oct '20.	€ Value	Rel	Star Rating (Across Breed)
★★★★★	<b>Replacement Index</b>	€194	82% (V High)	★★★★★
★★★☆☆	<b>Terminal Index</b>	€54	82% (V High)	★★★☆☆
★★☆☆☆	<b>Dairy Beef Index</b>	€25	79% (High)	★★☆☆☆
<b>Expected Progeny Performance</b>				
Calving Difficulty	Beef Heifers (% 3&4)	5.5%	71% (V High)	35 Beef Records
	Beef Cows (% 3&4)	1.2%	84% (V High)	
★★★★☆☆	Gestation Length (days)	0.2 days	87% (V High)	★★★★★
★★★★☆☆	Docility (Scale)	0.03 Scale	86% (V High)	★★★★★
★★★★☆☆	Carcass Weight (Kg)	8.7 Kg	93% (V High)	★★★★★
★★★★☆☆	Carcass Conf. (Scale 1-15)	0.38 Scale	91% (V High)	★★★★★
<b>Expected Daughter Performance</b>				
Daughter calving diff (% 3&4)		4.6%	76% (High)	★★★★★
Daughter milk (kg)		14.3 Kg	90% (V High)	
Daughter calving interval (d)		-8.6 days	73% (High)	



Son, Luddenmore Faeroe F038



Daughter, Luddenmore Rosa Erica

- No. 2 Angus bull available on Replacement Index
- Touchdown is renowned for his easily fleshed, traditional type Angus
- Progeny exhibit excellent breed character
- Daughter's are excellent on milk and fertility and make great breeders
- SEMEN LIMITED

<div> <div></div> <div></div> <div></div> </div>	Young Dale Real Deal 18K	Apex Stockman 061
	Pat Lady Sandra 2C	Merit Heroine 8043
		Ronan Tex 56A
		Double J Sandra 452Y

# Te Mania Berkley B1 PED

Code: **S1206**

DOB: 29/07/06

HB No: VTMB1

Myostatin: +/-

*PRESTIGE*  
*Angus*



Star Rating (Within Breed)	Index ICBF, Oct '20 Genotype Incl.	€ Value	Rel	Star Rating (Across Breed)
★★★★★★	<b>Replacement Index</b>	€178	76% (High)	★★★★★★
★★★★★★	<b>Terminal Index</b>	€105	83% (V High)	★★★★★★
★★★★★★	<b>Dairy Beef Index</b>	€137	83% (V High)	★★★★★★
<b>Expected Progeny Performance</b>				
Calving Difficulty	Beef Heifers (% 3&4)	2.5%	79% (High)	70 Beef Records
	Beef Cows (% 3&4)	0.8%	90% (V High)	
★★★★★★	Gestation Length (days)	-4.6 days	94% (V High)	★★★★★★
★★★★★★	Dolality (Scale)	0.02 Scale	88% (V High)	★★★★★★
★★★★★★	Carcass Weight (Kg)	11.9 Kg	89% (V High)	★★★★★★
★★★★★★	Carcass Conf. (Scale 1-15)	0.73 Scale	84% (V High)	★★★★★★
<b>Expected Daughter Performance</b>				
	Daughter calving diff (% 3&4)	8.5%	71% (High)	
★★★★★★	Daughter milk (kg)	12 Kg	83% (V High)	★★★★★★
★★★★★★	Daughter calving interval (d)	-7.8 days	55% (Average)	★★★★★★



Son, Intelagri Matteo AA4089

- One of the best bulls of the breed to combine calving ease & short gestation with growth & shape
- Joint No. 2 Angus available on Dairy Beef Index (DBI)
- No. 2 Angus available on gestation length
- Daughters are milky
- SEMEN IS LIMITED

S A F Focus Of E R

Te Mania Yorkshire  
Y437

Te Mania Lowan U275

Te Mania Lowan Z53  
Et

Kennys Creek Sandy S15

Te Mania Lowan V129



Son, Crook Hill Mr Bishampton V026

# HW Farghal T516 PED

Code: **AA4640**

DOB: 17/04/17

HB No: AANGBRM546977401516

Myostatin: +/-

PRESTIGE  
*Angus*



Star Rating (Within Breed)	Index ICBF, Oct '20 Genotype Incl.	€ Value	Rel	Star Rating (Across Breed)
★★★★★★	<b>Replacement Index</b>	€126	47% (Average)	★★★★★★
★★★★★★	<b>Terminal Index</b>	€89	58% (Average)	★★★★★★
★★★★★★	<b>Dairy Beef Index</b>	€86	72% (High)	★★★★★★
<b>Expected Progeny Performance</b>				
Calving Difficulty	Beef Heifers (% 3&4)	5.5%	83% (V High)	315 Beef Records
	Beef Cows (% 3&4)	2.4%	91% (V High)	
★★★★★★	Gestation Length (days)	-0.6 days	99% (V High)	★★★★★★
★★★★★★	Docility (Scale)	0.10 Scale	79% (High)	★★★★★★
★★★★★★	Carcass Weight (Kg)	14.6 Kg	53% (Average)	★★★★★★
★★★★★★	Carcass Conf. (Scale 1-15)	0.66 Scale	40% (Average)	★★★★★★
<b>Expected Daughter Performance</b>				
	Daughter calving diff (% 3&4)	7.2%	53% (Average)	
★★★★★★	Daughter milk (kg)	12.0 Kg	37% (Low)	★★★★★★
★★★★★★	Daughter calving interval (d)	-2.9 days	34% (Low)	★★★★★★



Sire, Netherton Kracker

- Farghal is making his mark as a breeder of quality pedigree and commercial cattle
- Progeny are average in size with excellent thickness and breed character
- Farghal consistently transmits excellent wide square plates
- Progeny are well-muscled, stylish, correct and quiet

Netherton Kracker P790  
 Netherton Fleur L623  
 S A V Brave 8320  
 Netherton Karama K574  
 Hf El Tigre 28U  
 Netherton Fleur J508



Son, Deelish Sniper

# HW Red Doom U104 PED

Code: **AA6355**

DOB: 03/05/18

HB No: AANGBRM546977402104

Myostatin: +/-

PRESTIGE  
*Angus*



Star Rating (Within Breed)	Index ICBF, Oct '20 <small>Genotype Incl.</small>	€ Value	Rel	Star Rating (Across Breed)
★★★★★	<b>Replacement Index</b>	€78	33% (Low)	★★★★★
★★★★★	<b>Terminal Index</b>	€54	35% (Low)	★★★★★
★★★★★	<b>Dairy Beef Index</b>	€69	33% (Low)	★★★★★
<b>Expected Progeny Performance</b>				
Calving Difficulty	Beef Heifers (% 3&4)	4.1%	34% (Low)	0 Beef Records
	Beef Cows (% 3&4)	3.5%	58% (Average)	
★★★★★	Gestation Length (days)	0.2 days	30% (Low)	★★★★★
★★★★★	Docility (Scale)	0.07 Scale	30% (Low)	★★★★★
★★★★★	Carcass Weight (Kg)	5.3 Kg	30% (Low)	★★★★★
★★★★★	Carcass Conf. (Scale 1-15)	0.51 Scale	30% (Low)	★★★★★
<b>Expected Daughter Performance</b>				
	Daughter calving diff (% 3&4)	8.4%	49% (Average)	
★★★★★	Daughter milk (Kg)	6.3 Kg	31% (Low)	★★★★★
★★★★★	Daughter calving interval (d)	-3.6 days	30% (Low)	★★★★★

- Doom is an outstanding looking bull with a pedigree that's full of show winners & great maternal genetics
- His sire Reload 703T had some noted winnings including Supreme Bull Champion at the Prince Albert Show 2009 & Reserve Grand Champion at Agribition 2008!



Sire, Red Ter-Ron Reload 703T Ss



Dam, Red Ter-Ron Dusty 98J



Sire's dam, Red Ter-Ron Samaria 103N

Red Ter-Ron Fully Loaded 540R  
 Red Ter-Ron Reload 703T Ss  
 Red Ter-Ron Samaria 103N  
 Red Yy Red Knight 640F Ss Imp  
 Red Ter-Ron Dusty 98J Et  
 Red Alder Abg Star Dust 8G

# Intelagri Matteo E.T. PED

Code: **AA4089**

DOB: 03/06/15

HB No: AANIRLM201083280080

Myostatin: +/-



Star Rating (Within Breed)	ICBF, Oct '20 Genotype Incl.	€ Value	Rel	Star Rating (Across Breed)
★★★★★	Replacement Index	€143	65% (V High)	★★★★★
★★★★★	Terminal Index	€76	92% (V High)	★★★★★
★★★★★	Dairy Beef Index	€104	95% (V High)	★★★★★

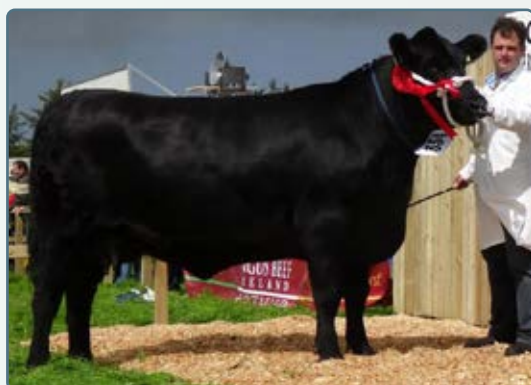
## Expected Progeny Performance

Calving Difficulty	Beef Heifers (% 3 & 4)	4.3%	95% (V High)	
	Beef Cows (% 3 & 4)	1.7%	95% (V High)	837 Beef Records
★★★★★	Gestation Length (days)	-3.9 d	99% (V High)	★★★★★
★★★★★	Docility (Scale)	0.01	93% (V High)	★★★★★
★★★★★	Carcass Weight (Kg)	5.6 Kg	97% (V High)	★★★★★
★★★★★	Carcass Conf (Scale 1 - 15)	0.72 Scale	96% (V High)	★★★★★

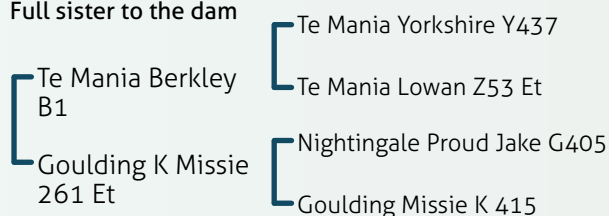
## Expected Daughter Performance

	Daughter calv diff (% 3 & 4)	7.4%	60% (High)	
★★★★★	Daughter milk (kg)	9.3 Kg	48% (Average)	★★★★★
★★★★★	Daughter calv interval (d)	-5.5 days	46% (Average)	★★★★★

- Easy calving, suitable for pedigree and commercial maidens
- Use to improve calving ease and gestation length without compromising on performance
- From the renowned Missie cow family



All-Ireland Junior Cow Champion 2014. Missie 535, Full sister to the dam



# HW Adonnis T243 PED

Code: **AA4639**

DOB: 09/03/17

HB No: AANGBRM546977401243

Myostatin: +/-



Star Rating (Within Breed)	ICBF, Oct '20 Genotype Incl.	€ Value	Rel	Star Rating (Across Breed)
★★★★★	Replacement Index	€134	41% (Average)	★★★★★
★★★★★	Terminal Index	€85	51% (Average)	★★★★★
★★★★★	Dairy Beef Index	€123	66% (High)	★★★★★

## Expected Progeny Performance

Calving Difficulty	Beef Heifers (% 3 & 4)	6.7%	47% (Average)	
	Beef Cows (% 3 & 4)	2.2%	72% (High)	30 Beef Records
★★★★★	Gestation Length (days)	-3.9 d	98% (V High)	★★★★★
★★★★★	Docility (Scale)	-0.01	42% (Average)	★★★★★
★★★★★	Carcass Weight (Kg)	12.8 Kg	49% (Average)	★★★★★
★★★★★	Carcass Conf (Scale 1 - 15)	0.42 Scale	39% (Low)	★★★★★

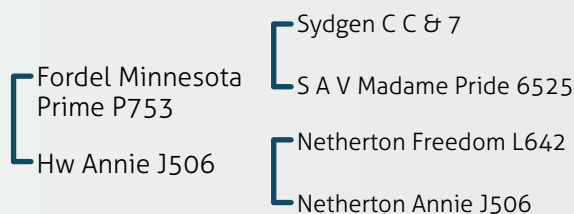
## Expected Daughter Performance

	Daughter calv diff (% 3 & 4)	7.3%	50% (Average)	
★★★★★	Daughter milk (kg)	11.1 Kg	36% (Low)	★★★★★
★★★★★	Daughter calv interval (d)	-3.5 days	32% (Low)	★★★★★

- Adonis is very easy calving; suitable for pedigree maidens
- Joint No. 3 Angus available on Dairy Beef Index (DBI)
- From the Netherton Annie family - the same family as Americano, this maternal line is renowned for short gestation



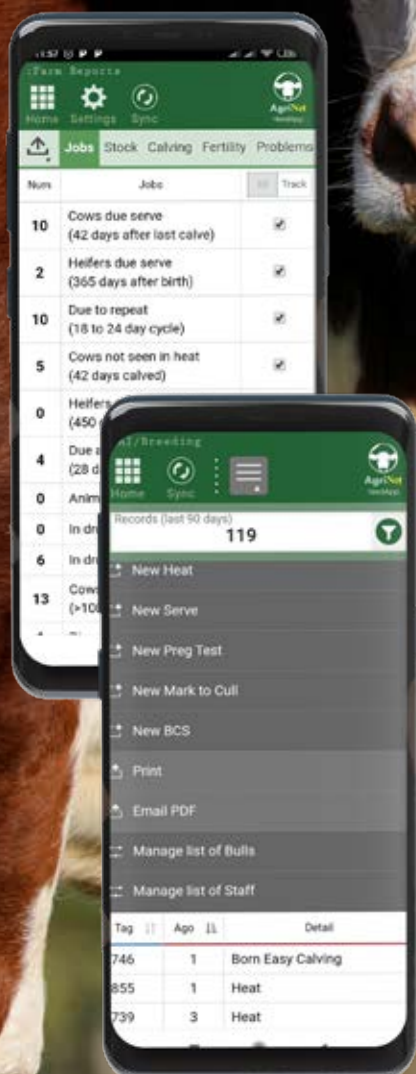
Sire, Fordel Minnesota Prime P753



Farm Better, Farm Faster



Part of your farm



ANDROID APP ON  
Google play



Available on the iPhone  
App Store

Tel: 046 924 9964 agrinet.ie Gavin 087 1998805



Jobs List



Herd Report



Animal Report



Births



Drug Cabinet



Drugs



Diary



Moves



Weights



AI/Breed/BCS



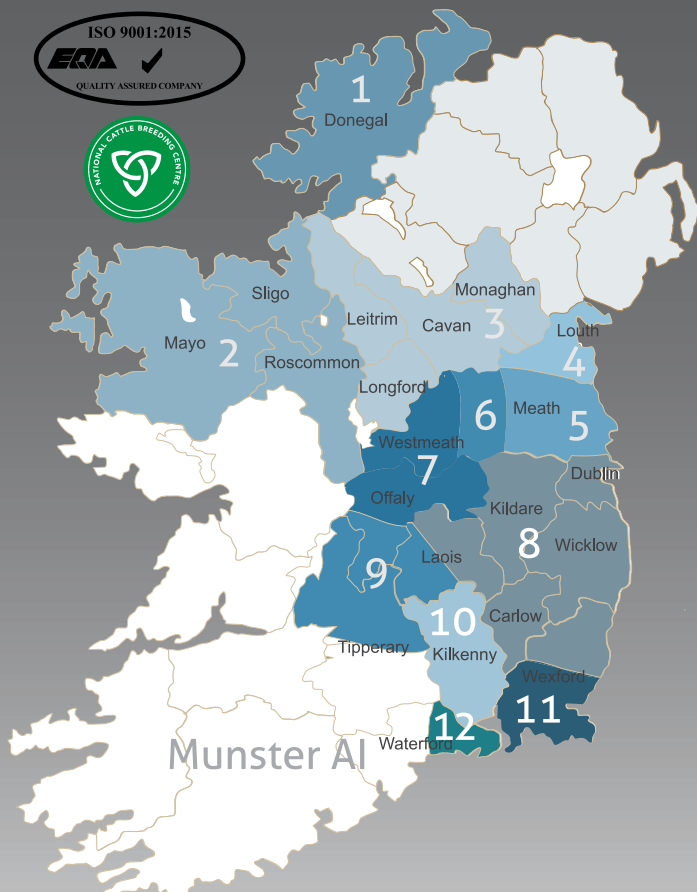
Inputs



For Inspections



Milk



**Seamus Hughes**  
Sales Manager

087 - 2331235



**Shane Leane**  
Technical Sales Manager

086 - 7514121



**John Griffith**  
West Area Manager  
086 - 8431624  
Sligo, Mayo, Roscommon



**Stephen Connolly**  
Milk Recording & Milk Preg testing  
086 - 0318380  
046 - 9540606

Call Centre: 046-9541230 or 1850 20 20 50  
[www.progressivegenetics.ie](http://www.progressivegenetics.ie)

Enfield Office  
Rathcore, Enfield  
Co. Meath A83 KP98  
Tel: 046-9541230



## Beef Specialists



**John McDaniel**  
East of Ireland  
087 - 2360318  
Sales Areas 4, 5, 6  
Louth, Meath,  
North Dublin



**Martin Regan**  
West of Ireland  
086 - 8216253  
Sales area 2:  
Sligo, Mayo, Roscommon

## Breeding Advisor & Semen Sales



**1. Gerard McCool**  
087 - 2057588  
Donegal



**3. Deirdre Toal**  
087 - 2599314  
Monaghan,  
Longford, Cavan,  
Leitrim



**5. Michael Quinn**  
086 - 3892908  
East Meath, North  
Dublin



**6. Leo Davis**  
086 - 8197114  
Kells Area &  
Westmeath East



**7. Violet Nevin**  
087 - 6253395  
Westmeath,  
North Offaly



**8. Trevor Hanly**  
087 - 2272446  
087 - 9148922  
Carlow, Wicklow,  
Kildare, E Laois, Nth  
Wexford



**9. Sean Hayes**  
087 - 2757835  
Tipperary, West  
Laois, South  
Offaly



**10. Denis Dalton**  
087 - 6785875  
Kilkenny



**10. Ger Power**  
086 - 2158505  
Kilkenny



**10. John Fogarty**  
087 - 6752401  
Tipperary &  
Kilkenny



**11. Eugene Kehoe**  
087 - 6842846  
South Wexford



**12. David Phelan**  
086 - 8959558  
East Waterford

[www.progressivegenetics.ie](http://www.progressivegenetics.ie)