

January
2021

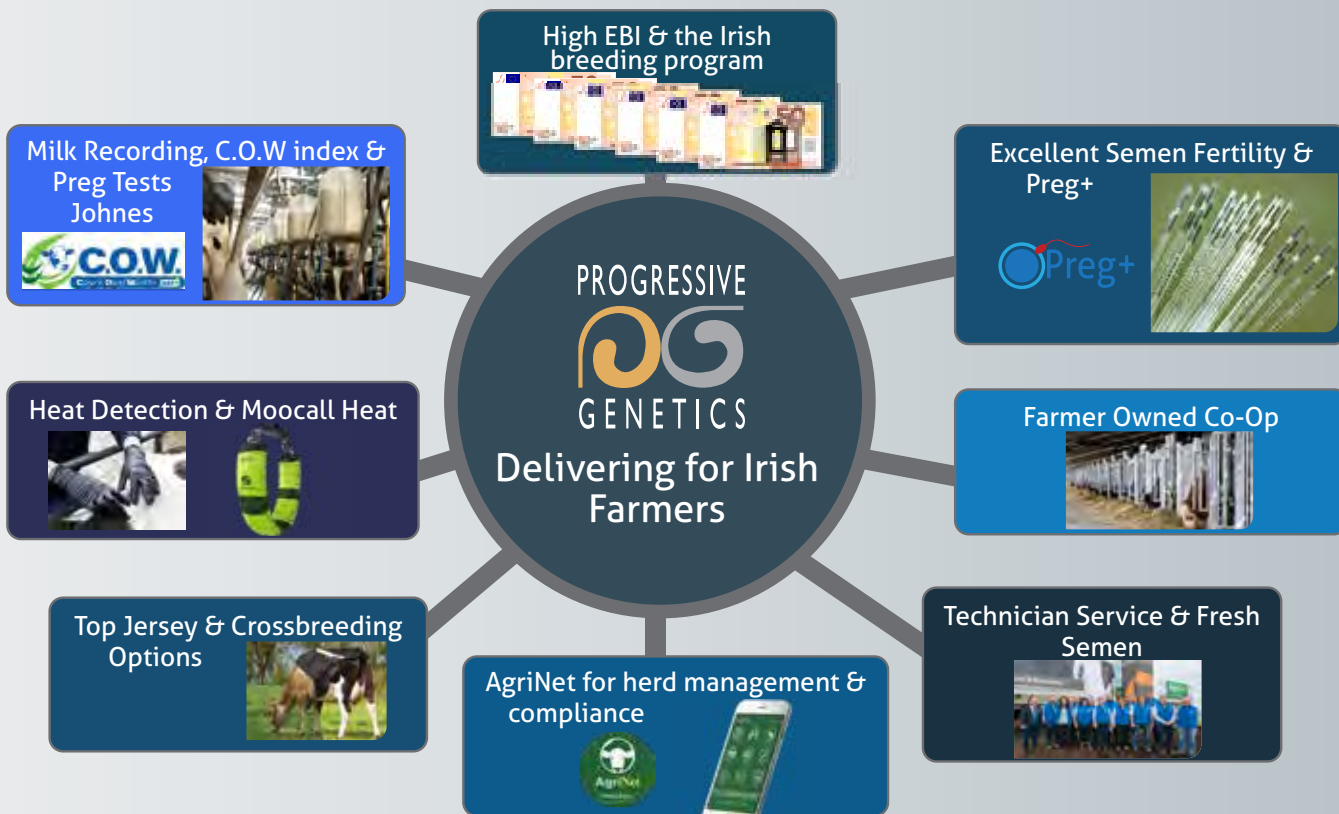
Crossbreeding Sires
& low maintenance B&W sires

PROGRESSIVE

GENETICS



Your Cattle Breeding Co-Op

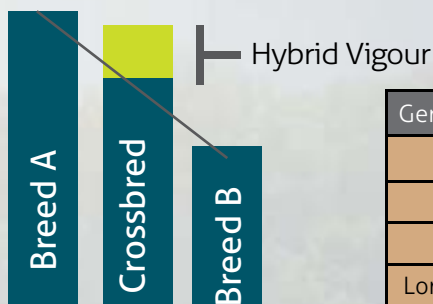


Our Semen Quality Standards

Bull Category	All Bulls	Main Catalogue	Preg+	Sexed
Lab Quality Control Passed	✓	✓	✓	✓
Field Fertility Data Average or above		✓	✓	✓
Top 10% for pregnancy rates & 2000+ Serves recorded			✓	

Breeding For Heterosis (Hybrid Vigour)

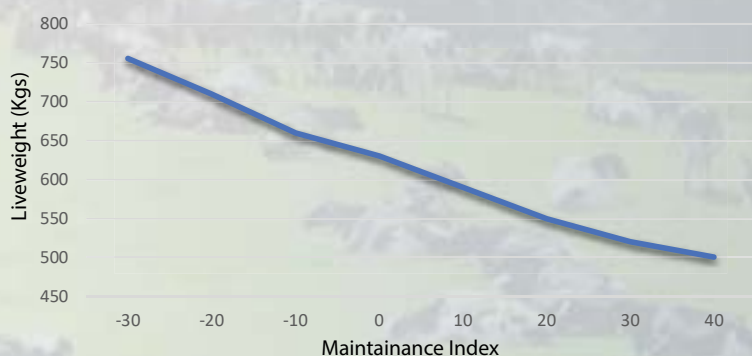
- Hybrid Vigour is the advantage over the average of the parent breeds
- Most hybrid vigour related to fertility & survivability
- Maximum hybrid vigour is achieved when crossing two pure breeds
- Quality of the parent breeds of vital importance



Value of Heterosis for different breeding strategies

Generation	One Cross	2 Breed	3 Breed	Crossbred Sires
	HO x JE x HO x HO	HO x JE x HO x JE	Ho x JE x NR x HO	HO x XBred X Xbred
1	€100	€100	€100	€50
2	€50	€50	€100	€50
Long Term	€0	€66	€87	€50

Live Weight vs Maintenance Index





Maintenance Index & Breeding for body size: +€10 = 40kgs lighter

Each €10 increase in cow maintenance sub-index was associated with 41.6 kg lighter cow live-weight. 22,705 live-weight records from cows sold singly in livestock marts in the year 2016 were used.

2021 Crossbreeding and Low Liveweight Sire Panels







Progressive Genetics Active Jersey Bulls November 2020

* Sexed Semen available 

Bull Details			EBI & Sub-Indexes						Production				Calv		Pedigree				
CODE	Name	Page	Proof	EBI	Rel	Prod	Fert	Health	Maint	Milk	Fat	Prot	Fat%	Prot%	Calv	Gest	Ped	Type	Sire
JE4497	PUKETAWA AD SUPERSTITION		DP-INT	€249	72	112	79	2	49	-282	21.1	7.3	+0.59	+0.31	4.3	-4.3	PED	0.7	Diablo
JE5386	(IG) NEXTGEN BRANDY 		GS	€222	54	86	77	6	52	-362	17.7	2.9	+0.59	+0.28	4.0	-3.6	PED	0.9	Triplestar
JE4676	GLEN LEITH DEGREE OMNIBUS		DP-INT	€214	65	103	63	5	54	-144	21.9	7.5	+0.49	+0.22	4.8	-3.5	PED	1.0	Degree
JE4677	PUKEROA GUN WALKER JG		DP-INT	€203	64	101	49	6	60	-234	17.9	7.2	+0.49	+0.27	4.2	-2.4	PED	1.1	Son of a Gun
JE6235	GLEN LEITH AND QUIZ S2J		DP-INT	€194	59	105	54	-3	51	-41	24.8	8.5	+0.46	+0.17	4.4	-2.4	PED	1.0	Degree
JE6088	PUKETAWA KING CARRICK JG		DP-INT	€189	63	117	44	0	49	-158	24.7	8.8	+0.55	+0.25	4.5	-2.0	PED	1.0	Kingpin
JE4155	PUKETAWA KING CONNACHT JG		DP-IRL	€168	80	79	45	4	52	-420	17.4	0.8	+0.63	+0.28	4.0	-2.5	PED	1.0	Kingpin

Progressive Genetics Active High EBI HOFER Bulls November 2020



Bull Details			EBI & Sub-Indexes						Production				Calv		Pedigree				
CODE	Name	Page	Proof	EBI	Rel	Prod	Fert	Health	Maint	Milk	Fat	Prot	Fat%	Prot%	Calv	Gest	Ped	Type	Sire
FR4728	(IG) KILFEACLE PIVOTAL		GS	€314	64	129	114	4	15	364	22.0	19.7	+0.13	+0.12	4.7	-5.0	PED	-1.3	LWR
FR5515	(IG) STONEPARK SERGI SRM		GS	€289	50	99	127	19	19	-72	17.7	9.4	+0.36	+0.21	7.1	-3.8	SRM	-0.9	Zoro
FR4482	(IG) SPRINGHAVEN SUPREME 		GS	€273	64	86	137	8	4	172	11.5	13.2	+0.08	+0.13	7.1	-4.4	PED	-0.2	LWR
FR5803	(IG) HIGHMOUNT STARK		GS	€270	59	123	85	8	17	219	20.2	17.1	+0.20	+0.16	4.1	-3.5	PED	-0.4	Ronaldo
YKA	(IG) ARDKYLE MOUNT EVERET		DP-IRL	€267	93	87	120	12	14	-26	13.8	9.5	+0.26	+0.18	5.9	-4.5	SRM	-1.8	LHZ
FR5737	(IG) SHANDANGAN CRYSTAL		GS	€264	53	114	92	5	15	232	23.1	14.7	+0.24	+0.12	5.8	-4.4	PED	-0.1	Albert
FR5289	(IG) NEXTGEN PACKMAN SRM		GS	€259	60	84	139	1	23	-76	13.5	8.3	+0.29	+0.19	6.2	-3.6	SRM	-0.5	Leo
FR5971	(IG) VIADUCTVIEW FIVEO 		GS	€257	51	102	101	12	8	170	21.9	12.2	+0.26	+0.11	6.1	-3.4	PED	0.1	Albert
FR5593	(IG) OAKGLEN COSMIC 		GS	€248	62	109	81	-3	9	224	23.6	13.5	+0.25	+0.10	3.7	-5.3	PED	-0.7	Jack
FR4337	(IG) GABRIEL ZORO 		GS	€248	65	105	88	8	9	27	12.3	14.0	+0.19	+0.23	6.6	-4.7	SRM	-1.6	Ronaldo
FR4532	(IG) CAHERAGH MAYSON		GS	€245	65	120	57	5	12	132	25.0	13.5	+0.34	+0.15	5.4	-4.7	SRM	-0.1	Maestro
FR4738	(IG) BALLYMAW NOVA SRM 		GS	€234	62	99	81	5	9	209	17.9	13.7	+0.16	+0.11	6.3	-4.8	SRM	-0.2	Anton
FR4510	(IG) RONNOCO MILAN		GS	€233	66	95	102	14	9	-15	10.8	12.1	+0.20	+0.22	6.3	-2.7	PED	-1.3	GZY
FR2005	(IG) KEALFINCHEON NORMAN		DP-IRL	€223	94	85	76	6	18	-15	21.6	6.6	+0.39	+0.12	6.1	-5.1	SRM	-0.1	WLY
FR4481	(IG) MONABROGUE EBONY 		GS	€213	64	110	62	-3	13	293	14.4	18.0	+0.05	+0.13	7.2	-6.1	PED	1.0	Art
FR2079	(IG) MODELIGO LUKE		DP-IRL	€210	94	77	82	-1	14	-153	14.8	5.6	+0.37	+0.19	5.5	-5.0	SRM	-0.7	AKZ

Progressive Genetics Active XBred Bulls November 2020



Bull Details			EBI & Sub-Indexes						Production				Calv		Pedigree				
CODE	Name	Page	Proof	EBI	Rel	Prod	Fert	Health	Maint	Milk	Fat	Prot	Fat%	Prot%	Calv	Gest	Ped	Type	Sire
FR6229	GREENMILE NGAURUHOE F10J6		DP-INT	€271	55	105	102	12	32	28	17.9	12.0	+0.29	+0.19	2.8	-3.5	XXX	-0.7	Jadie
FR4588	(IG) BRIDESTREAM LEVERET		GS	€259	62	102	64	21	23	20	14.9	12.3	+0.25	+0.20	4.7	-4.7	XXX	-1.5	Ronaldo
FR4028	(IG) CLOHANE LUCKY STRIKE		DP-IRL	€244	79	104	83	3	19	60	19.8	11.6	+0.30	+0.17	4.7	-3.6	SRM	-1.6	PCZ
JE4520	ARKANS GURKHA J9F7		GS	€229	54	116	63	3	32	-69	20.1	11.5	+0.40	+0.25	5.0	-2.3	XXX	0.2	Beamer
FR2240	(IG) BEECHGROVE ANDREW		DP-IRL	€211	82	96	87	4	22	149	14.3	13.5	+0.14	+0.14	6.5	-1.1	SRM	-1.5	YAD
JE6250	MCBRIDES H4 HARMON J9F7		DP-INT	€197	61	68	71	7	44	-185	10.8	4.8	+0.32	+0.20	4.7	-4.0	XXX	0.3	Solaris
516801	BURGESS LT ZODIAK		DP-INT	€194	39	120	41	-4	30	112	23.0	14.0	+0.30	+0.17	4.9	-3.3	XXX	0.5	Terrific
JE4190	LYNBROOK LT VIKING		DP-IRL	€177	74	85	55	-15	39	-98	13.0	8.4	+0.30	+0.21	5.0	-3.5	XXX	0.8	Terrific

See Dairy Sires Catalogue for more details on full range of B&W Sires

New Zealand Proofs 11th December 2020

	Name	Dtrs	Fat	Protein	Milk	Liveweight	Fertility	Somatic Cell	Residual Survival	Breeding Worth	Breeding Worth Reliability	Heifer Calving Difficulty	Body Condition Score
Jerseys	PUKETAWA KING CONNACHT JG	3276	41	4	-670	-39	2.2	-0.39	99	\$361	96	-0.9	0.18
	PUKETAWA KING CARRICK JG	123	34	14	-263	-35	4.3	-0.46	50	\$331	86	-1.7	0.09
	GLEN LEITH AND QUIZ S2J	117	41	16	15	-36	3.2	-0.11	-30	\$323	82	-2.0	0.11
	PUKETAWA AD SUPERSTITION	7795	35	9	-459	-43	2.6	-0.37	-8	\$321	99	-1.8	0.04
	GLEN LEITH DEGREE OMNIBUS	194	32	8	-185	-26	3.0	-0.04	101	\$272	89	-2.1	0.19
	PUKEROA GUN WALKER JG	78	24	13	-77	-45	0.8	-0.31	11	\$239	82	-2.4	-0.05
XBreds	ARKANS GURKHA J9F7	48	41	23	366	-25	3.2	0.14	13	\$300	70	-2.1	0.14
	BURGESS LT ZODIAK J8F8	232	40	21	221	-4	3.4	0.24	13	\$273	82	0.3	0.19
	MCBRIDES H4 HARMON J9F7	50	28	18	79	-29	2.3	-0.53	-80	\$266	79	-0.3	0.13
	GREENMILE NGAURUHOE F10J6	93	25	25	297	-3	2.9	-0.34	109	\$259	83	-1.5	0.32
	LYNBROOK LT VIKING J10F6	1600	17	13	53	-41	5.7	0.57	34	\$216	93	-0.8	0.17



Gurkha JE4520



Carrick JE6088



Quiz JE6235

Greenmile XXXX

XBred

A.I. Code: **FR6229**

GREENMILE NGAURUHOE F10J6

44% Hol

Jadie x Mint-Edition x Manhattan

aAa: -

HB No.: HOLNZLM000000516671

Beta Casein: A1A2

Bred by: CRV



Greenmile Ngauruhoe F10J6

Foreign Daughter, ICBF November 2020				NZ Proof, 11/12/2020			
	€	Rel		Breeding worth	\$	Rel	83
EBI	€271	55					
Production	€105	79		PRODUCTION			
Fertility	€102	45		Milk (Kg)	297	Daus	93
Calving	€51	42		Fat (Kg)	25	Herds	26
Beef	€-43	35		Protein (Kg)	25	% Rel	88
Health	€12	62		Fat %	5.0		
Maintenance	€32	35		Protein (%)	4.1		
Management	€11	48		FERTILITY			
PRODUCTION				Fertility BV	2.9	Rel	68
Milk (Kg)	28	Daus	0	Residual Survival	109	Rel	56
Fat (Kg)	18	Herds	0	HEALTH			
Protein (Kg)	12	% Rel	79	Somatic Cell BV	-0.34	86% Rel	
Fat %	+0.29			Other Traits			
Protein (%)	+0.19			Liveweight BV	-3	87% Rel	
FERTILITY				Body Condition Score	0.32	82% Rel	
Calving Int (Days)	-4.5	Daus	0	Adaptability BV	0.36	70% Rel	
Survival (%)	+3.7	Herds	0	Temperament BV	0.35	80% Rel	
HEALTH				Milking Speed	0.32	82% Rel	
Lameness	-0.09	Good		Overall Opinion BV	0.42	70% Rel	
SCC	-0.03	Average		Stature BV	-0.30	89% Rel	
Mastitis (%)	-0.05	Good		Capacity BV	0.59	85% Rel	
MANAGEMENT				Legs BV	0.07	76% Rel	
Temperament	0.14	Average		Udder Overall BV	0.33	85% Rel	
Milking Speed	-20	Fast		Dairy Conformation BV	0.44	76% Rel	
CALVING				CALVING			
Heifer Calv. Diff	2.8	39	0 Rec	Heifer Calv. Diff	-1.5	37% Rel	
Heifer Calv. Risk	Low			Cow Calv.	-0.5	76% Rel	
Cow Calv.	1.2	68		Gest Len (Days)	-1.6	98% Rel	
Dau Calving	5.1	30					
Gest Len (Days)	-3.5	35					
Calf Mort	0.0	35					

- High NZ \$BW
- Daughter Proven
- Massive EBI
- Solids & fertility

Leveret XXXX

XBred

A.I. Code: **FR4588**

(IG) BRIDESTREAM LEVERET

63% Hol

Ronaldo x Manzello x KOZ

aAa: 516324

HB No.: HOLIRLM222975381649

Beta Casein: A2A2

Bred by: Liam Leahy, Crookstown, Co Cork



Dam Liam Leahy YAD x PKA

Genomic, ICBF November 2020			
	€	Rel	
EBI	€259	62	
Production	€102	78	
Fertility	€64	45	
Calving	€54	87	
Beef	€-15	53	
Health	€21	63	
Maintenance	€23	48	
Management	€12	56	
PRODUCTION			
Milk (Kg)	20	Daus	0
Fat (Kg)	15	Herds	0
Protein (Kg)	12	% Rel	78
Fat %	+0.25		
Protein (%)	+0.20		
FERTILITY			
Calving Int (Days)	-3.3	Daus	0
Survival (%)	+1.8	Herds	0
HEALTH			
Lameness	-0.10	Good	
SCC	-0.16	Good	
Mastitis (%)	-0.08	Good	
MANAGEMENT			
Temperament	0.37	Good	
Milking Speed	5	Average	
CALVING			
Heifer Calv. Diff	4.7	91	943 Rec
Heifer Calv. Risk	Low		
Cow Calv.	2.3	94	
Dau Calving	4.7	41	
Gest Len (Days)	-4.7	99	
Calf Mort	0.2	93	
BEEF			
Carcass Wt	-7	Average	
Carcass Conf	-1	Average	
TYPE			
Overall	-1		
Udder	-2		
Feet and Legs	0		

- Massive percentages
- Easy Calving
- Excellent Health traits
- Reliable bloodlines

Strike SRM

XBred

A.I. Code: **FR4028**

(IG) CLOHANE LUCKY STRIKE

66% Hol

PCZ x SOK x Impish

aAa: 243165

HB No.: HOLIRLM141979121371

Beta Casein: -

Bred by: Liam O'Donovan, Skilbreen, Co Cork



PCZ Daughter

Irish Daughter, ICBF November 2020			
	€	Rel	
EBI	€244	79	
Production	€104	92	
Fertility	€83	66	
Calving	€46	84	
Beef	€-20	82	
Health	€3	72	
Maintenance	€19	74	
Management	€9	69	

PRODUCTION				MANAGEMENT			
Milk (Kg)	60	Daus	88	Temperament	0.09	Average	
Fat (Kg)	20	Herds	50	Milking Speed	-18	Fast	
Protein (Kg)	12	% Rel	92	CALVING			
Fat %	+0.30			Heifer Calv. Diff	4.7	76	315 Rec
Protein (%)	+0.17			Heifer Calv. Risk	Low		
FERTILITY				Cow Calv.	2.2	89	
Calving Int (Days)	-4.5	Daus	0	Dau Calving	4.9	50	
Survival (%)	+2.1	Herds	0	Gest Len (Days)	-3.6	97	
				Calf Mort	-0.5	81	
HEALTH				BEEF			
Lameness	-0.07	Good		Carcass Wt	-7	Average	
SCC	0.09	Average		Carcass Conf	-1	Average	
Mastitis (%)	-0.02	Good		TYPE			
				Overall	-2		
				Udder	-2		
				Feet and Legs	0		

- Daughter Proven
- Fantstic solids and percentages
- Easy Calving

Sire:	(IG) CONNIBAR PRINCE / PCZ						
Dam:	CLOHANE SYLVIA (GP 84)						
Dam Yields:							
	Milk Kgs	Fat Kgs	Ptn Kgs	F+P	BFat%	Ptn%	Clv Int
5 Lact	7870	361	295	656	4.58	3.75	356
Ave	6921	333	257	590	4.84	3.71	365
Life (6 Lct)	40919	1959	1516	3475	4.79	3.70	
G Sire:	(IG) SUNNYBANK OMAN / SOK						
G Dam:	452						
	Milk Kgs	Fat Kgs	Ptn Kgs	F+P	BFat%	Ptn%	Clv Int
3 Lact	7661	380	297	677	4.96	3.88	389
Ave	6866	341	259	600	4.96	3.76	371
Life (5 Lct)	31877	1560	1188	2748	4.89	3.73	

Gurkha XSR

XBred

A.I. Code: **JE4520**

ARKANS GURKHA J9F7

28% Hol

Beamer x Goldie x Henry

aAa: 165432

HB No.: JERNZLM000000517668

Beta Casein: A1A2

Bred by: CRV Ambreed



Gurkha J9F7

Genomic, ICBF November 2020			
	€	Rel	
EBI	€229	54	
Production	€116	66	
Fertility	€63	37	
Calving	€34	80	
Beef	€-34	51	
Health	€3	55	
Maintenance	€32	44	
Management	€15	47	

PRODUCTION				FERTILITY			
Milk (Kg)	-69	Daus	0	Calving Int (Days)	-2.7	Daus	0
Fat (Kg)	20	Herds	0	Survival (%)	+2.4	Herds	0
Protein (Kg)	12	% Rel	66	HEALTH			
Fat %	+0.40			Lameness	-0.05	Good	
Protein (%)	+0.25			SCC	0.06	Average	
				Mastitis (%)	-0.02	Good	
MANAGEMENT				Temperament	0.31	Good	
Temperament	0.31	Good		Milking Speed	-14	Fast	
Milking Speed	-14	Fast		CALVING			
				Heifer Calv. Diff	5.0	80	303 Rec
				Heifer Calv. Risk	Low		
				Cow Calv.	2.2	86	
				Dau Calving	5.3	30	
				Gest Len (Days)	-2.3	97	
				Calf Mort	-0.8	83	

NZ Proof, 11/12/2020			
Breeding worth	\$ 300	Rel	70
PRODUCTION			
Milk (Kg)	366	Daus	48
Fat (Kg)	41	Herds	18
Protein (Kg)	23	% Rel	75
Fat %	5.2		
Protein (%)	4.0		
FERTILITY			
Fertility BV	3.2	Rel	54
Residual Survival	13	Rel	45
HEALTH			
Somatic Cell BV	0.14	72% Rel	
Other Traits			
Liveweight BV	-25	83% Rel	
Body Condition Score	0.14	71% Rel	
Adaptability BV	0.36	63% Rel	
Temperament BV	0.28	67% Rel	
Milking Speed	0.21	71% Rel	
Overall Opinion BV	0.41	63% Rel	
Stature BV	-0.47	84% Rel	
Capacity BV	0.73	77% Rel	
Legs BV	0.26	60% Rel	
Udder Overall BV	0.58	77% Rel	
Dairy Conformation BV	0.69	70% Rel	
CALVING			
Heifer Calv. Diff	-2.1	80% Rel	
Cow Calv.	-0.2	84% Rel	
Gest Len (Days)	0.4	99% Rel	

- Daughter proven in NZ
- +0.25% Protein
- Easy Calving
- Very high BW

Grove SRM

XBred

A.I. Code: **FR2240**

(IG) BEECHGROVE ANDREW

56% Hol

YAD x Dano x Manhattan

aAa: -

HB No.: HOLIRLM161255812678

Beta Casein: -

Bred by: Maurice Graham, St Johnstone, Co Donegal



Dano Daughter

Irish Daughter, ICBF November 2020		€	Rel
EBI		€211	82
Production		€96	96
Fertility		€87	68
Calving		€14	86
Beef		€-24	85
Health		€4	77
Maintenance		€22	87
Management		€12	71

PRODUCTION			
Milk (Kg)	149	Daus	122
Fat (Kg)	14	Herds	55
Protein (Kg)	13	% Rel	96
Fat %	+0.14		
Protein (%)	+0.14		

FERTILITY			
Calving Int (Days)	-5.3	Daus	47
Survival (%)	+1.7	Herds	100

HEALTH			
Lameness	-0.02	Average	
SCC	-0.03	Average	
Mastitis (%)	-0.02	Good	

MANAGEMENT			
Temperament	0.16	Good	
Milking Speed	-20	Fast	

CALVING			
Heifer Calv. Diff	6.5	71	316 Rec
Heifer Calv. Risk	Low		
Cow Calv.	2.4	90	
Dau Calving	6.0	58	
Gest Len (Days)	-1.1	97	
Calf Mort	-0.3	84	

BEEF			
Carcass Wt	-13	Lighter	
Carcass Conf	-1	Average	

TYPE			
Overall	-2		
Udder	-2		
Feet and Legs	-1		

- Daughter Proven
- High Maintainence index
- Super management traits

Sire:	(IG) DIAMOND ANDY / YAD						
Dam:	BEECHGROVE AINE						
Dam Yields:							
	Milk Kgs	Fat Kgs	Ptn Kgs	F+P	BFat%	Ptn%	Clv Int
7 Lact	8642	319	307	626	3.69	3.55	353
Ave	7201	279	260	539	3.89	3.60	366
Life (8 Lct)	55227	2120	1982	4102	3.84	3.59	
G Sire	HAZAEEL EMINENCE DANO-ET / HZO						
G Dam	853						

Harmon XSR

XBred

A.I. Code: **JE6250**

MCBRIDES H4 HARMON J9F7

22% Hol

Solaris x Northsea x Imperial

aAa: 561423

HB No.: JERNZLM000000515660

Beta Casein: A2A2

Bred by: CRV



Harmon daughter

Foreign Daughter, ICBF November 2020		€	Rel
EBI		€197	61
Production		€68	86
Fertility		€71	47
Calving		€43	48
Beef		€-48	45
Health		€7	62
Maintenance		€44	45
Management		€13	56

PRODUCTION			
Milk (Kg)	-185	Daus	0
Fat (Kg)	11	Herds	0
Protein (Kg)	5	% Rel	86
Fat %	+0.32		
Protein (%)	+0.20		

FERTILITY			
Calving Int (Days)	-3.7	Daus	0
Survival (%)	+2.0	Herds	0

HEALTH			
Lameness	-0.01	Average	
SCC	-0.09	Average	
Mastitis (%)	-0.03	Good	

MANAGEMENT			
Temperament	0.16	Good	
Milking Speed	-23	Fast	

CALVING			
Heifer Calv. Diff	4.7	49	0 Rec
Heifer Calv. Risk	Low		
Cow Calv.	2.0	56	
Dau Calving	6.0	43	
Gest Len (Days)	-4.0	46	
Calf Mort	-0.3	45	

NZ Proof, 11/12/2020			
Breeding worth	\$ 266	Rel	79

PRODUCTION			
Milk (Kg)	79	Daus	50
Fat (Kg)	28	Herds	18
Protein (Kg)	18	% Rel	86
Fat %	5.3		
Protein (%)	4.1		

FERTILITY			
Fertility BV	2.3	Rel	61
Residual Survival	-80	Rel	53

HEALTH			
Somatic Cell BV	-0.53	80% Rel	

Other Traits			
Liveweight BV	-29	78% Rel	
Body Condition Score	0.13	71% Rel	
Adaptability BV	0.21	58% Rel	
Temperament BV	0.18	64% Rel	
Milking Speed	0.10	76% Rel	
Overall Opinion BV	0.24	59% Rel	
Stature BV	-0.64	84% Rel	
Capacity BV	0.45	80% Rel	
Legs BV	-0.02	67% Rel	
Udder Overall BV	0.29	80% Rel	
Dairy Conformation BV	0.38	65% Rel	

CALVING		
Heifer Calv. Diff	-0.3	86% Rel
Cow Calv.	-0.5	76% Rel
Gest Len (Days)	-5.6	99% Rel

- Daughter priven PSQ son
- +0.20% Protein
- High NZ BWS

Zodiak XSR

XBred

BURGESS LT ZODIAK F8J8

Terrific x Mont-Edition x Hugo

HB No.: JERNZLM000000516801

Bred by: CRV



A.I. Code: Pending

50% Hol

aAa: -

Beta Casein: A2A2



Burgess LT Zodiak F8J8

Foreign Daughter, ICBF November 2020				NZ Proof, 11/12/2020			
	€	Rel		Breeding worth	\$	Rel	
EBI	€194	39		\$ 273		82	
PRODUCTION							
Production	€120	70	Milk (Kg)	221	Daus	232	
Fertility	€41	25	Fat (Kg)	40	Herds	31	
Calving	€38	23	Protein (Kg)	21	% Rel	92	
Beef	€-36	23	Fat %	5.4			
Health	€-4	21	Protein (%)	4.0			
Maintenance	€30	21	FERTILITY				
Management	€4	18	Fertility BV	3.4	Rel	74	
PRODUCTION				Residual Survival	13	Rel	59
Milk (Kg)	112	Daus	0	HEALTH			
Fat (Kg)	23	Herds	0	Somatic Cell BV	0.24	93% Rel	
Protein (Kg)	14	% Rel	70	Other Traits			
Fat %	+0.30			Liveweight BV	-4	45% Rel	
Protein (%)	+0.17			Body Condition Score	0.19	49% Rel	
FERTILITY				Adaptability BV	0.47	37% Rel	
Calving Int (Days)	-1.3	Daus	0	Temperament BV	0.46	42% Rel	
Survival (%)	+2.1	Herds	0	Milking Speed	0.27	47% Rel	
HEALTH				Overall Opinion BV	0.53	37% Rel	
Lameness	-0.02	Average		Stature BV	-0.15	53% Rel	
SCC	0.06	Average		Capacity BV	0.62	49% Rel	
Mastitis (%)	0.04	Below Ave		Legs BV	0.01	46% Rel	
MANAGEMENT				Udder Overall BV	0.99	50% Rel	
Temperament	0.04	Average		Dairy Conformation BV	0.65	39% Rel	
Milking Speed	-7	Average		CALVING			
CALVING				Heifer Calv. Diff	0.3	44% Rel	
Heifer Calv. Diff	4.9	22	0 Rec	Cow Calv.	0.2	60% Rel	
Heifer Calv. Risk	High			Gest Len (Days)	-0.6	99% Rel	
Cow Calv.	2.1	25					
Dau Calving	5.4	17					
Gest Len (Days)	-3.3	24					
Calf Mort	0.4	22					

- Daughter proven in NZ
- +37 kgs milk solids
- +30 Maintenance index
- High NZ BW\$

Viking XSR

XBred

LYNBROOK LT VIKING

Terrific x Edition x Northsea

HB No.: JERNZLM000000515813

Bred by: CRV



A.I. Code: JE4190

38% Hol

aAa: 561342

Beta Casein: A2A2



Viking daughter

Irish Daughter, ICBF November 2020				NZ Proof, 11/12/2020			
	€	Rel		Breeding worth	\$	Rel	
EBI	€177	74		\$ 216		93	
PRODUCTION							
Production	€85	97	Milk (Kg)	53	Daus	1600	
Fertility	€55	44	Fat (Kg)	17	Herds	279	
Calving	€44	89	Protein (Kg)	13	% Rel	97	
Beef	€-42	90	Fat %	5.1			
Health	€-15	78	Protein (%)	4.0			
Maintenance	€39	67	FERTILITY				
Management	€11	74	Fertility BV	5.7	Rel	88	
PRODUCTION				Residual Survival	34	Rel	69
Milk (Kg)	-98	Daus	324	HEALTH			
Fat (Kg)	13	Herds	88	Somatic Cell BV	0.57	98% Rel	
Protein (Kg)	8	% Rel	97	Other Traits			
Fat %	+0.30			Liveweight BV	-41	90% Rel	
Protein (%)	+0.21			Body Condition Score	0.17	79% Rel	
FERTILITY				Adaptability BV	0.49	72% Rel	
Calving Int (Days)	-2.6	Daus	0	Temperament BV	0.47	74% Rel	
Survival (%)	+1.8	Herds	0	Milking Speed	0.17	83% Rel	
HEALTH				Overall Opinion BV	0.45	72% Rel	
Lameness	-0.02	Average		Stature BV	-0.87	90% Rel	
SCC	0.25	Below Ave		Capacity BV	0.30	85% Rel	
Mastitis (%)	0.07	Below Ave		Legs BV	0.07	73% Rel	
MANAGEMENT				Udder Overall BV	0.98	86% Rel	
Temperament	0.15	Good		Dairy Conformation BV	0.29	77% Rel	
Milking Speed	-18	Fast		CALVING			
CALVING				Heifer Calv. Diff	5.0	94	1122 Rec
Heifer Calv. Diff	5.0	94	1122 Rec	Heifer Calv. Risk	Low		
Heifer Calv. Risk	Low			Cow Calv.	2.0	95	
Cow Calv.	2.0	95		Dau Calving	5.2	48	
Dau Calving	5.2	48		Gest Len (Days)	-3.5	99	
Gest Len (Days)	-3.5	99		Calf Mort	0.0	94	
Calf Mort	0.0	94					

- Daughter proven in NZ
- Super udders
- High Once-a-day index
- +0.21% Protein

Superstition PED

PUKETAWA AD SUPERSTITION

Diablo x Manhattan x Forever

HB No.: JERNZLM00000310507

Bred by: CRV Ambreed



Superstition daughter

Jersey
A.I. Code: JE4497

100% JE

aAa: 516324

Beta Casein: A2A2

Brandy PED

(IG) NEXTGEN BRANDY

Triplestar x Manzello x Bungy

HB No.: JERIRLM226044651586

Bred by: Teagasc, Moorepark, Co Cork



Triplestar daughter

Jersey
A.I. Code: JE5386

100% JE

aAa: 516342

Beta Casein: A2/A2

Foreign Daughter, ICBF November 2020

	€	Rel
EBI	€249	72
Production	€112	89
Fertility	€79	55
Calving	€53	90
Beef	€-57	67
Health	€2	72
Maintenance	€49	53
Management	€11	66

PRODUCTION			
Milk (Kg)	-282	Daus	0
Fat (Kg)	21	Herds	0
Protein (Kg)	7	% Rel	89
Fat %	+0.59		
Protein (%)	+0.31		

FERTILITY			
Calving Int (Days)	-3.5	Daus	1
Survival (%)	+2.9	Herds	3

HEALTH			
Lameness	-0.04	Good	
SCC	0.05	Average	
Mastitis (%)	-0.01	Average	

MANAGEMENT			
Temperament	0.21	Good	
Milking Speed	-11	Fast	

CALVING			
Heifer Calv. Diff	4.3	97	2387 Rec
Heifer Calv. Risk	Low		
Cow Calv.	1.8	98	
Dau Calving	4.6	49	
Gest Len (Days)	-4.3	99	
Calf Mort	0.8	97	

NZ Proof, 11/12/2020

Breeding worth	\$	Rel	99
PRODUCTION			

Milk (Kg)	-459	Daus	7795
Fat (Kg)	35	Herds	1256
Protein (Kg)	9	% Rel	99
Fat %	6.1		
Protein (%)	4.4		

FERTILITY			
Fertility BV	2.6	Rel	98
Residual Survival	-8	Rel	96

HEALTH			
Somatic Cell BV	-0.37	99% Rel	

Other Traits			
Liveweight BV	-43	99% Rel	
Body Condition Score	0.04	97% Rel	
Adaptability BV	0.44	94% Rel	
Temperament BV	0.44	95% Rel	
Milking Speed	0.45	96% Rel	
Overall Opinion BV	0.52	94% Rel	
Stature BV	-0.74	98% Rel	
Capacity BV	0.52	97% Rel	
Legs BV	0.07	93% Rel	
Udder Overall BV	0.57	97% Rel	
Dairy Conformation BV	0.48	96% Rel	

CALVING			
Heifer Calv. Diff	-1.8	97% Rel	
Cow Calv.	-0.6	97% Rel	
Gest Len (Days)	-5.3	99% Rel	

Genomic, ICBF November 2020

	€	Rel
EBI	€222	54
Production	€86	76
Fertility	€77	35
Calving	€44	55
Beef	€-55	44
Health	€6	64
Maintenance	€52	44
Management	€11	60

PRODUCTION			
Milk (Kg)	-362	Daus	0
Fat (Kg)	18	Herds	0
Protein (Kg)	3	% Rel	76
Fat %	+0.59		
Protein (%)	+0.28		

MANAGEMENT			
Temperament	0.19	Good	
Milking Speed	-13	Fast	

CALVING			
Heifer Calv. Diff	4.0	60	0 Rec
Heifer Calv. Risk	Low		
Cow Calv.	1.6	60	
Dau Calving	5.5	41	
Gest Len (Days)	-3.6	60	
Calf Mort	1.0	47	

BEEF			
Carcass Wt	-28	Lighter	
Carcass Conf	-1	Below Ave	

TYPE			
Overall	1		
Udder	-1		
Feet and Legs	4		

- Sexed Semen
- Triplestar son for stong family with super index
- +0.28% Protein

- Thousands of daughters milking and still one of the highest EBI & BW Jerseys
- 28 kgs milk solids & +0.31% Protein
- Short Gestation

Omnibus PED

Jersey

A.I. Code: **JE4676**

GLEN LEITH DEGREE OMNIBUS

100% JE

Degree x Manhattan x Landmark

aAa: 651432

HB No.: JERNZLM000000314502

Beta Casein: A2A2

Bred by: CRV



Omnibus Daughter

Foreign Daughter, ICBF November 2020			NZ Proof, 11/12/2020		
	€	Rel	Breeding worth	\$	Rel
EBI	€214	65	\$ 272		89
PRODUCTION					
Production	€103	89	Milk (Kg)	-185	Daus 194
Fertility	€63	49	Fat (Kg)	32	Herds 71
Calving	€37	83	Protein (Kg)	8	% Rel 95
Beef	€-52	46	Fat %	5.7	
Health	€5	64	Protein (%)	4.1	
Maintenance	€54	38	FERTILITY		
Management	€5	59	Fertility BV	3.0	Rel 73
PRODUCTION			Residual Survival	101	Rel 59
Milk (Kg)	-144	Daus 0	HEALTH		
Fat (Kg)	22	Herds 0	Somatic Cell BV	-0.04	93% Rel
Protein (Kg)	8	% Rel 89	Other Traits		
Fat %	+0.49		Liveweight BV	-26	89% Rel
Protein (%)	+0.22		Body Condition Score	0.19	82% Rel
FERTILITY			Adaptability BV	0.04	73% Rel
Calving Int (Days)	-1.6	Daus 0	Temperament BV	0.02	76% Rel
Survival (%)	+3.5	Herds 0	Milking Speed	0.45	84% Rel
HEALTH			Overall Opinion BV	0.19	74% Rel
Lameness	-0.07	Good	Stature BV	-0.43	91% Rel
SCC	0.02	Average	Capacity BV	0.35	86% Rel
Mastitis (%)	-0.01	Average	Legs BV	0.15	77% Rel
MANAGEMENT			Udder Overall BV	0.45	87% Rel
Temperament	-0.02	Average	Dairy Conformation BV	0.25	79% Rel
Milking Speed	-17	Fast	CALVING		
CALVING			Heifer Calv. Diff	-2.1	89% Rel
Heifer Calv. Diff	4.8	79 362 Rec	Cow Calv.	-0.8	90% Rel
Heifer Calv. Risk	Low		Dau Calving	5.8	39
Cow Calv.	2.0	90	Gest Len (Days)	-3.5	98
Dau Calving	5.8	39	Calf Mort	1.0	83
Gest Len (Days)	-3.5	98			
Calf Mort	1.0	83			

- Daughter Proven
- 30 kgs milk solids
- Nice udders
- Good daughter fertility

Walker PED

Jersey

A.I. Code: **JE4677**

PUKEROA GUN WALKER JG

100% JE

Son of a Gun x Manzello x Trick

aAa: 423651

HB No.: JERNZLM000000314531

Beta Casein: A1A2

Bred by: CRV



Walker Daughter

Foreign Daughter, ICBF November 2020			NZ Proof, 11/12/2020		
	€	Rel	Breeding worth	\$	Rel
EBI	€203	64	\$ 239		82
PRODUCTION					
Production	€101	88	Milk (Kg)	-77	Daus 78
Fertility	€49	45	Fat (Kg)	24	Herds 40
Calving	€30	87	Protein (Kg)	13	% Rel 90
Beef	€-54	43	Fat %	5.4	
Health	€6	63	Protein (%)	4.1	
Maintenance	€60	37	FERTILITY		
Management	€12	57	Fertility BV	0.8	Rel 64
PRODUCTION			Residual Survival	11	Rel 51
Milk (Kg)	-234	Daus 0	HEALTH		
Fat (Kg)	18	Herds 0	Somatic Cell BV	-0.31	86% Rel
Protein (Kg)	7	% Rel 88	Other Traits		
Fat %	+0.49		Liveweight BV	-45	81% Rel
Protein (%)	+0.27		Body Condition Score	-0.05	70% Rel
FERTILITY			Adaptability BV	0.34	63% Rel
Calving Int (Days)	-1.7	Daus 0	Temperament BV	0.40	65% Rel
Survival (%)	+2.3	Herds 0	Milking Speed	-0.04	79% Rel
HEALTH			Overall Opinion BV	0.40	63% Rel
Lameness	-0.07	Good	Stature BV	-0.69	86% Rel
SCC	-0.01	Average	Capacity BV	-0.11	81% Rel
Mastitis (%)	-0.01	Average	Legs BV	0.07	70% Rel
MANAGEMENT			Udder Overall BV	0.31	82% Rel
Temperament	0.00	Average	Dairy Conformation BV	0.04	69% Rel
Milking Speed	-38	Fast	CALVING		
CALVING			Heifer Calv. Diff	4.2	94 1048 Rec
Heifer Calv. Diff	4.2	94 1048 Rec	Heifer Calv. Risk	Low	
Heifer Calv. Risk	Low		Cow Calv.	2.0	95
Cow Calv.	2.0	95	Dau Calving	5.8	38
Dau Calving	5.8	38	Gest Len (Days)	-2.4	99
Gest Len (Days)	-2.4	99	Calf Mort	0.8	93
Calf Mort	0.8	93			

- Massive percentages
- Great temperament & workability
- Daughter proven

Quiz PED

GLEN LEITH AND QUIZ S2J

Degree x Manhattan x Landmark

HB No.: JERNZLM000000316517

Bred by: CRV



Quiz Daughter

Jersey
A.I. Code: **JE6235**

100% JE

aAa: -
Beta Casein: A2A2

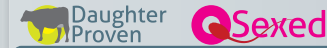
Guide PED

VJ GUIDE

Gulf x Jason

HB No.: JERDNKM000000304047

Bred by: Viking



VJ Guide

Jersey
A.I. Code: **JE2402**

100% JE

aAa: -
Beta Casein: -

Foreign Daughter, ICBF November 2020			
	€	Rel	
EBI	€194	59	
Production	€105	85	
Fertility	€54	46	
Calving	€30	47	
Beef	€-50	39	
Health	€-3	63	
Maintenance	€51	37	
Management	€6	59	

PRODUCTION			
Milk (Kg)	-41	Daus	0
Fat (Kg)	25	Herds	0
Protein (Kg)	9	% Rel	85
Fat %	+0.46		
Protein (%)	+0.17		

FERTILITY			
Calving Int (Days)	-1.8	Daus	0
Survival (%)	+2.5	Herds	0

HEALTH			
Lameness	-0.04	Good	
SCC	0.08	Average	
Mastitis (%)	0.03	Below Ave	

MANAGEMENT			
Temperament	0.09	Average	
Milking Speed	-10	Fast	

CALVING			
	% Rel	Note	
Heifer Calv. Diff	4.4	53	0 Rec
Heifer Calv. Risk	Low		
Cow Calv.	2.0	58	
Dau Calving	5.8	40	
Gest Len (Days)	-2.4	43	
Calf Mort	0.8	42	

NZ Proof, 11/12/2020			
Breeding worth	\$	Rel	
	323	82	

PRODUCTION			
Milk (Kg)	15	Daus	117
Fat (Kg)	41	Herds	36
Protein (Kg)	16	% Rel	89
Fat %	5.6		
Protein (%)	4.1		

FERTILITY			
Fertility BV	3.2	Rel	67
Residual Survival	-30	Rel	54

HEALTH			
Somatic Cell BV	-0.11	88% Rel	

Other Traits			
Liveweight BV	-36	84% Rel	
Body Condition Score	0.11	72% Rel	
Adaptability BV	0.07	61% Rel	
Temperament BV	0.03	64% Rel	
Milking Speed	0.15	77% Rel	
Overall Opinion BV	0.14	61% Rel	
Stature BV	-0.62	88% Rel	
Capacity BV	0.16	83% Rel	
Legs BV	0.16	73% Rel	
Udder Overall BV	0.23	83% Rel	
Dairy Conformation BV	0.15	73% Rel	

CALVING			
	% Rel		
Heifer Calv. Diff	-2.0	74% Rel	
Cow Calv.	0.8	79% Rel	
Gest Len (Days)	-3.7	99% Rel	

Foreign Daughter, ICBF November 2020			
	€	Rel	
EBI	€193	65	
Production	€63	80	
Fertility	€77	65	
Calving	€19	61	
Beef	€-51	42	
Health	€8	59	
Maintenance	€69	36	
Management	€8	53	

PRODUCTION			
Milk (Kg)	-233	Daus	0
Fat (Kg)	14	Herds	0
Protein (Kg)	2	% Rel	80
Fat %	+0.42		
Protein (%)	+0.18		

FERTILITY			
Calving Int (Days)	-3.2	Daus	1
Survival (%)	+3.0	Herds	9

HEALTH			
Lameness	-0.07	Good	
SCC	0.00	Average	
Mastitis (%)	-0.03	Good	

MANAGEMENT			
Temperament	0.12	Average	
Milking Speed	-11	Fast	

CALVING			
	% Rel	Note	
Heifer Calv. Diff	2.0	54	24 Rec
Heifer Calv. Risk	Low		
Cow Calv.	1.4	57	
Dau Calving	5.3	39	
Gest Len (Days)	-2.2	78	
Calf Mort	8.3	46	

- Very high BW\$
- High ranking RAS list bull
- High solids and excellent fertility
- An outstandign all-round performer

- Daughter Proven
- Sexed Semen
- Balanced all-round performace from Denmark

Carrick PED

Jersey

A.I. Code: **JE6088**

PUKETAWA KING CARRICK JG

100% JE

Kingpin x Maumau x Blake

aAa: -

HB No.: JERNZLM000000314515

Beta Casein: A2A2

Bred by: CRV



Puketawa King Carrick JG

Foreign Daughter, ICBF November 2020			NZ Proof, 11/12/2020		
	€	Rel	Breeding worth	\$	Rel
EBI	€189	63	\$ 331		86
PRODUCTION					
Production	€117	88	Milk (Kg)	-263	Daus 123
Fertility	€44	49	Fat (Kg)	34	Herds 46
Calving	€26	50	Protein (Kg)	14	% Rel 93
Beef	€-54	45	Fat %	5.8	
Health	€0	70	Protein (%)	4.3	
Maintenance	€49	43	FERTILITY		
Management	€8	63	Fertility BV	4.3	Rel 69
PRODUCTION			Residual Survival	50	Rel 57
Milk (Kg)	-158	Daus 0	HEALTH		
Fat (Kg)	25	Herds 0	Somatic Cell BV	-0.46	90% Rel
Protein (Kg)	9	% Rel 88	Other Traits		
Fat %	+0.55		Liveweight BV	-35	90% Rel
Protein (%)	+0.25		Body Condition Score	0.09	81% Rel
FERTILITY			Adaptability BV	0.42	75% Rel
Calving Int (Days)	-1.2	Daus 0	Temperament BV	0.43	77% Rel
Survival (%)	+2.3	Herds 0	Milking Speed	0.12	85% Rel
HEALTH			Overall Opinion BV	0.49	75% Rel
Lameness	-0.05	Good	Stature BV	-0.49	91% Rel
SCC	0.05	Average	Capacity BV	0.54	87% Rel
Mastitis (%)	0.02	Below Ave	Legs BV	-0.06	78% Rel
MANAGEMENT			Udder Overall BV	0.69	88% Rel
Temperament	0.12	Average	Dairy Conformation BV	0.45	80% Rel
Milking Speed	-10	Fast	CALVING		
CALVING			Heifer Calv. Diff	-1.7	96% Rel
Heifer Calv. Diff	4.5	58 0 Rec	Cow Calv.	-0.8	97% Rel
Heifer Calv. Risk	Low		Gest Len (Days)	0.4	99% Rel
Cow Calv.	1.9	61			
Dau Calving	5.4	45			
Gest Len (Days)	-2.0	46			
Calf Mort	2.0	45			

- An outstanding Production Index sire
- Massive solids
- Good temperament & milking traits
- Correct Udders

Connacht PED

Jersey

A.I. Code: **JE4155**

PUKETAWA KING CONNACHT JG

100% JE

Kingpin x Maumau x Blake

aAa: 456213

HB No.: JERNZLM000000315503

Beta Casein: A2A2

Bred by: CRV



Connacht Daughter

Irish Daughter, ICBF November 2020			NZ Proof, 11/12/2020		
	€	Rel	Breeding worth	\$	Rel
EBI	€168	80	\$ 361		96
PRODUCTION					
Production	€79	99	Milk (Kg)	-670	Daus 3276
Fertility	€45	51	Fat (Kg)	41	Herds 523
Calving	€31	91	Protein (Kg)	4	% Rel 98
Beef	€-51	92	Fat %	6.6	
Health	€4	84	Protein (%)	4.5	
Maintenance	€52	90	FERTILITY		
Management	€8	79	Fertility BV	2.2	Rel 93
PRODUCTION			Residual Survival	99	Rel 73
Milk (Kg)	-420	Daus 669	HEALTH		
Fat (Kg)	17	Herds 162	Somatic Cell BV	-0.39	99% Rel
Protein (Kg)	1	% Rel 99	Other Traits		
Fat %	+0.63		Liveweight BV	-39	96% Rel
Protein (%)	+0.28		Body Condition Score	0.18	92% Rel
FERTILITY			Adaptability BV	0.22	88% Rel
Calving Int (Days)	-1.0	Daus 0	Temperament BV	0.25	89% Rel
Survival (%)	+2.6	Herds 0	Milking Speed	0.23	92% Rel
HEALTH			Overall Opinion BV	0.35	88% Rel
Lameness	-0.07	Good	Stature BV	-0.86	96% Rel
SCC	0.00	Average	Capacity BV	0.66	94% Rel
Mastitis (%)	0.01	Average	Legs BV	0.02	86% Rel
MANAGEMENT			Udder Overall BV	0.56	94% Rel
Temperament	0.06	Average	Dairy Conformation BV	0.45	91% Rel
Milking Speed	-20	Fast	CALVING		
CALVING			Heifer Calv. Diff	-0.9	97% Rel
Heifer Calv. Diff	4.0	98 2502 Rec	Cow Calv.	-1.2	96% Rel
Heifer Calv. Risk	Low		Gest Len (Days)	-1.3	99% Rel
Cow Calv.	1.9	98			
Dau Calving	5.1	53			
Gest Len (Days)	-2.5	99			
Calf Mort	2.9	97			

- No. 1 available BW\$ Sire
- Super longevity
- Excellent percentages
- Thousands of milking daughters in Ireland & New Zealand

Pivotal PED

(IG) KILFEACLE PIVOTAL

LWR x LHZ x Rodney
HB No.: HOLIRLM219765491921
Bred by: Michael Marnane, Tipperary, Co Tipperary



HO-FR EBI

A.I. Code: FR4728

81% Hol

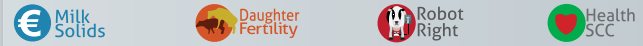
aAa: 423516

Beta Casein: A2/A2

Sergi SRM

(IG) STONEPARK SERGI SRM

Zoro x Brigade x LHZ
HB No.: HOLIRLM214759811859
Bred by: Noel Martin, Fardrum, Co Westmeath



HO-FR EBI

A.I. Code: FR5515

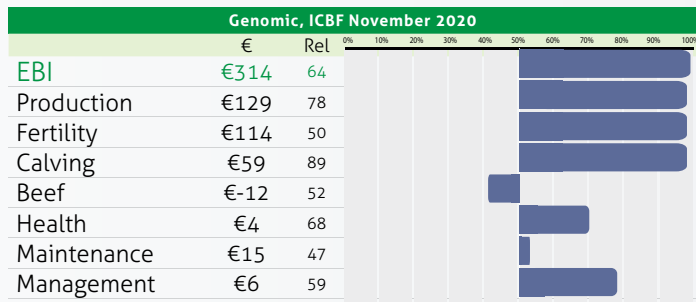
81% Hol

aAa: -

Beta Casein: A1/A2

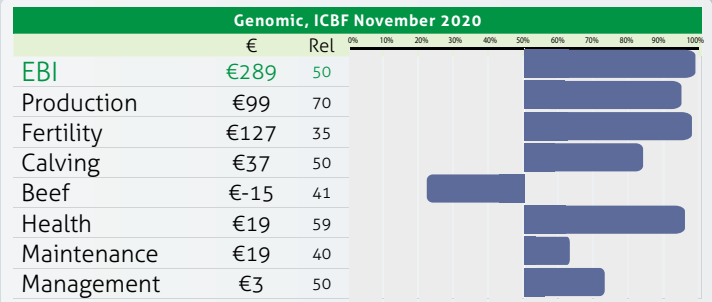
FR4728 (IG) KILFEACLE PIVOTAL Dam

STONEPARK FR2007 MARY 1534 Dam of FR5515



PRODUCTION			MANAGEMENT		
Milk (Kg)	364	Daus 0	Temperament	0.09	Average
Fat (Kg)	22	Herds 0	Milking Speed	-10	Fast
Protein (Kg)	20	% Rel 78	CALVING		
Fat %	+0.13		Heifer Calv. Diff	4.7	87
Protein (%)	+0.12		Heifer Calv. Risk	Low	2002 Rec
FERTILITY			Cow Calv.	2.1	98
Calving Int (Days)	-6.5	Daus 0	Dau Calving	4.8	48
Survival (%)	+2.5	Herds 0	Gest Len (Days)	-5.0	99
HEALTH			Calf Mort	-0.5	96
Lameness	-0.07	Good	BEEF		
SCC	0.10	Average	Carcass Wt	-5	Average
Mastitis (%)	-0.04	Good	Carcass Conf	-1	Average
			TYPE		
			Overall	-1	
			Udder	-1	
			Feet and Legs	-1	

- The leader for EBI
- His calves impress around the country
- Easy Calving
- All-round package



PRODUCTION			MANAGEMENT		
Milk (Kg)	-72	Daus 0	Temperament	0.00	Average
Fat (Kg)	18	Herds 0	Milking Speed	-10	0
Protein (Kg)	9	% Rel 70	CALVING		
Fat %	+0.36		Heifer Calv. Diff	7.1	54
Protein (%)	+0.21		Heifer Calv. Risk	Moderate	0 Rec
FERTILITY			Cow Calv.	2.6	63
Calving Int (Days)	-7.5	Daus 0	Dau Calving	5.3	34
Survival (%)	+2.7	Herds 0	Gest Len (Days)	-3.8	48
HEALTH			Calf Mort	-0.1	46
Lameness	-0.06	Good	BEEF		
SCC	-0.15	Good	Carcass Wt	-8	Average
Mastitis (%)	-0.10	Good	Carcass Conf	-1	Average
			TYPE		
			Overall	-1	
			Udder	-1	
			Feet and Legs	-1	

- New graduate solids specialist
- +0.21% Protein
- Outstanding health
- Moderate size

Sire:	(IG) LONGVIEW RELIABLE / LWR						
Dam:	KILFEACLE OLIVE 1589						
Dam Yields:							
	Milk Kgs	Fat Kgs	Ptn Kgs	F+P	BFat%	Ptn%	Clv Int
4 Lact	9873	359	345	704	3.64	3.49	370
Ave	8139	314	289	603	3.89	3.54	353
Life (4 Lct)	27944	1086	984	2070	3.89	3.52	
G Sire	(IG) LAURAGH EVERT / LHZ						
G Dam	KILFEACLE OLIVE 910						
	Milk Kgs	Fat Kgs	Ptn Kgs	F+P	BFat%	Ptn%	Clv Int
7 Lact	10246	368	353	721	3.59	3.44	656
Ave	9226	344	320	664	3.73	3.47	370
Life (7 Lct)	68190	2547	2390	4937	3.74	3.50	

Sire:	(IG) GABRIEL ZORO						
Dam:	STONEPARK FR2007 MARY 1534 (GP 83)						
Dam Yields:							
	Milk Kgs	Fat Kgs	Ptn Kgs	F+P	BFat%	Ptn%	Clv Int
3 Lact	7067	328	265	593	4.64	3.75	402
Ave	6694	330	250	580	4.98	3.74	382
Life (3 Lct)	15846	789	585	1374	4.98	3.69	
G Sire	(IG) OLCASTLETOWN RONALDO						
G Dam	STONEPARK LHZ MARY 1222						
	Milk Kgs	Fat Kgs	Ptn Kgs	F+P	BFat%	Ptn%	Clv Int
5 Lact	8443	306	305	611	3.62	3.61	401
Ave	7702	286	277	563	3.70	3.59	364
Life (5 Lct)	37628	1390	1350	2740	3.69	3.59	

Supreme PED

HO-FR EBI

A.I. Code: FR4482

(IG) SPRINGHAVEN SUPREME

72% Hol

LWR x YRC x Piper

aAa: 435216

HB No.: HOLIRLM219543774689

Beta Casein: A2A2

Bred by: Robert Troy, Newtownshandrum, Co Cork



FR4482 Dam Springhaven YRC Melanie 3859

Genomic, ICBF November 2020		
	€	Rel
EBI	€273	64
Production	€86	78
Fertility	€137	48
Calving	€46	88
Beef	€-9	57
Health	€8	67
Maintenance	€4	51
Management	€2	56

PRODUCTION			MANAGEMENT			
Milk (Kg)	172	Daus	0	Temperament	-0.07	Average
Fat (Kg)	11	Herds	0	Milking Speed	-16	Fast
Protein (Kg)	13	% Rel	78	CALVING		
Fat %	+0.08			Heifer Calv. Diff	7.1	80 2799 Rec
Protein (%)	+0.13			Heifer Calv. Risk	Moderate	
				Cow Calv.	2.7	98
				Dau Calving	4.7	46
				Gest Len (Days)	-4.4	99
				Calf Mort	-1.0	98
				BEEF		
				Carcass Wt	-4	Average
				Carcass Conf	-1	Average
				TYPE		
				Overall	0	
				Udder	-1	
				Feet and Legs	0	

- Female Sexed semen available
- Outstanding daughter fertility
- Good production & low SCC
- LWR son

Sire:	(IG) LONGVIEW RELIABLE / LWR						
Dam:	SPRINGHAVEN YRC MELANIE 3859						
Dam Yields:							
	Milk Kgs	Fat Kgs	Ptn Kgs	F+P	BFat%	Ptn%	Clv Int
4 Lact	6621	312	249	561	4.90	3.94	374
Ave	6138	279	235	514	4.54	3.83	368
Life (4 Lct)	21266	960	803	1763	4.51	3.78	
G Sire	CURRA ROY / YRC						
G Dam	SPRINGHAVEN MELANIE 3478						
	Milk Kgs	Fat Kgs	Ptn Kgs	F+P	BFat%	Ptn%	Clv Int
6 Lact	7916	336	296	632	4.47	3.92	396
Ave	6866	294	258	552	4.29	3.76	373
Life (6 Lct)	36270	1549	1356	2905	4.27	3.74	

Stark PED

HO-FR EBI

A.I. Code: FR5803

(IG) HIGHMOUNT STARK

75% Hol

Ronaldo x LHZ x UYC

aAa: -

HB No.: HOLIRLM219799392209

Beta Casein: A2/A2

Bred by: John Hannigan, Dromcollogher, Co. Limerick



Highmount Stark Dam

Genomic, ICBF November 2020		
	€	Rel
EBI	€270	59
Production	€123	79
Fertility	€85	47
Calving	€42	51
Beef	€-9	46
Health	€8	67
Maintenance	€17	46
Management	€4	58

PRODUCTION			MANAGEMENT			
Milk (Kg)	219	Daus	0	Temperament	0.20	Good
Fat (Kg)	20	Herds	0	Milking Speed	9	Average
Protein (Kg)	17	% Rel	79	CALVING		
Fat %	+0.20			Heifer Calv. Diff	4.1	57 0 Rec
Protein (%)	+0.16			Heifer Calv. Risk	Low	
				Cow Calv.	2.7	63
				Dau Calving	5.0	43
				Gest Len (Days)	-3.5	48
				Calf Mort	-0.3	46
				BEEF		
				Carcass Wt	-4	Average
				Carcass Conf	0	Average
				TYPE		
				Overall	0	
				Udder	-1	
				Feet and Legs	0	

- Huge kgs milk solids
- Outstanding percentages
- New star for 2021
- Moderate size, health improver

Sire:	(IG) OLCASTLETOWN RONALDO						
Dam:	HIGHMOUNT LHZ CATHERINE (VG 87)						
Dam Yields:							
	Milk Kgs	Fat Kgs	Ptn Kgs	F+P	BFat%	Ptn%	Clv Int
5 Lact	7992	332	295	627	4.16	3.69	404
Ave	7537	306	279	585	4.06	3.70	385
Life (5 Lct)	32166	1283	1179	2462	3.99	3.67	
G Sire	GADDAGH CUDDY REEKS						
G Dam	HIGHMOUNT UYC CATHERINE (GP 81)						
	Milk Kgs	Fat Kgs	Ptn Kgs	F+P	BFat%	Ptn%	Clv Int
10 Lact	8176	287	286	573	3.51	3.49	470
Ave	7256	267	257	524	3.68	3.54	372
Life (10 Lct)	69110	2496	2418	4914	3.61	3.50	

Everest PED

HO-FR EBI

A.I. Code: **PKR**

(IG) PARKDUV MOUNT EVEREST

91% Hol

LHZ x HFL x GMI

aAa: 432561

HB No.: HOLIRLM151013731563

Beta Casein: -

Bred by: Kevin Downing, Whitechurch, Co Cork.



PKR Daughter

Irish Daughter, ICBF November 2020		
	€	Rel
EBI	€267	93
Production	€87	99
Fertility	€120	86
Calving	€49	96
Beef	€-15	98
Health	€12	89
Maintenance	€14	92
Management	€2	80

PRODUCTION		
Milk (Kg)	-26	Daus 641
Fat (Kg)	14	Herds 236
Protein (Kg)	9	% Rel 99
Fat %	+0.26	
Protein (%)	+0.18	

FERTILITY		
Calving Int (Days)	-5.1	Daus 288
Survival (%)	+4.4	Herds 724

HEALTH		
Lameness	-0.07	Good
SCC	-0.04	Average
Mastitis (%)	-0.06	Good

MANAGEMENT		
Temperament	0.00	Average
Milking Speed	-5	Average

CALVING		
Heifer Calv. Diff	5.9	96 3979 Rec
Heifer Calv. Risk		Low
Cow Calv.	2.4	99
Dau Calving	5.1	86
Gest Len (Days)	-4.5	99
Calf Mort	-0.6	98

BEEF		
Carcass Wt	-7	Average
Carcass Conf	-1	Average

TYPE		
Overall	-2	
Udder	-2	
Feet and Legs	-1	

- Daughter Proven
- Excellent daughter fertility
- Moderate sized
- Over 6000 daughters in proof

Sire:	(IG) LAURAGH EVERT / LHZ						
Dam:	ARDKYLE TULIP 662 (GP 81)						
Dam Yields:							
	Milk Kgs	Fat Kgs	Ptn Kgs	F+P	BFat%	Ptn%	Clv Int
4 Lact	7719	365	292	657	4.72	3.79	350
Ave	7037	311	266	577	4.42	3.78	369
Life (4 Lct)	27735	1218	1044	2262	4.39	3.76	
G Sire	HAZAEI MN SWEETDREAM S2F / HZS						
G Dam	ARDKYLE TULIP 554 (VG 85)						
	Milk Kgs	Fat Kgs	Ptn Kgs	F+P	BFat%	Ptn%	Clv Int
#REF! Lact	8683	361	318	679	4.16	3.66	364
Ave	7687	320	287	608	4.17	3.74	364
Life (8 Lct)	43739	1808	1621	3429	4.13	3.71	

Crystal PED

HO-FR EBI

A.I. Code: **FR5737**

(IG) SHANDANGAN CRYSTAL

78% Hol

Albert x KOZ x Looster

aAa: -

HB No.: HOLIRLM214291421859

Beta Casein: A2/A2

Bred by: Charles O'Carroll, Carrigadrohid, Co Cork



SHANDANGAN CAROL 7 (EX 91) Dam of Crystal

Genomic, ICBF November 2020		
	€	Rel
EBI	€264	53
Production	€114	73
Fertility	€92	38
Calving	€49	51
Beef	€-20	42
Health	€5	62
Maintenance	€15	39
Management	€8	54

PRODUCTION		
Milk (Kg)	232	Daus 0
Fat (Kg)	23	Herds 0
Protein (Kg)	15	% Rel 73
Fat %	+0.24	
Protein (%)	+0.12	

FERTILITY		
Calving Int (Days)	-3.8	Daus 0
Survival (%)	+3.6	Herds 0

HEALTH		
Lameness	-0.04	Good
SCC	0.02	Average
Mastitis (%)	-0.03	Good

MANAGEMENT		
Temperament	0.09	Average
Milking Speed	-17	Fast

CALVING		
Heifer Calv. Diff	5.8	56 1 Rec
Heifer Calv. Risk		Low
Cow Calv.	2.3	65
Dau Calving	5.1	37
Gest Len (Days)	-4.4	48
Calf Mort	-0.8	48

BEEF		
Carcass Wt	-11	Average
Carcass Conf	-1	Average

TYPE		
Overall	0	
Udder	0	
Feet and Legs	-1	

- Albert son with +0.24% fat
- €114 production index
- High maintenance index & low lameness
- Dam is EX KOZ on 8th lactation

Sire:	(IG) BALLYGOWN ALBERT						
Dam:	SHANDANGAN CAROL 7 (EX 91)						
Dam Yields:							
	Milk Kgs	Fat Kgs	Ptn Kgs	F+P	BFat%	Ptn%	Clv Int
8 Lact	9324	395	350	745	4.23	3.75	425
Ave	8157	350	293	643	4.30	3.60	371
Life (8 Lct)	59871	2575	2151	4726	4.30	3.59	
G Sire	COOLNASOON ART						
G Dam	SHANDANGAN CAROL 2 (VG 86)						
	Milk Kgs	Fat Kgs	Ptn Kgs	F+P	BFat%	Ptn%	Clv Int
7 Lact	8504	365	297	662	4.29	3.49	570
Ave	7650	331	274	605	4.33	3.57	436
Life (7 Lct)	62346	2730	2265	4995	4.38	3.63	

Packman SRM

HO-FR EBI

A.I. Code: **FR5289**

(IG) NEXTGEN PACKMAN SRM

72% Hol

Leo x Meteor x HZO

aAa: 435261

HB No.: **HOLIRLM226044621583**

Beta Casein: A1/A2

Bred by: Teagasc, Moorepark, Co Cork



HZO Daughter

Genomic, ICBF November 2020			
	€	Rel	
EBI	€259	60	
Production	€84	78	
Fertility	€139	46	
Calving	€36	60	
Beef	€-25	47	
Health	€1	63	
Maintenance	€23	52	
Management	€3	54	

PRODUCTION		MANAGEMENT	
Milk (Kg)	-76 Daus 0	Temperament	-0.02 Average
Fat (Kg)	14 Herds 0	Milking Speed	-11 Fast
Protein (Kg)	8 % Rel 78	CALVING	
Fat %	+0.29	Heifer Calv. Diff	6.2 54 6 Rec
Protein (%)	+0.19	Heifer Calv. Risk	Low
FERTILITY		Cow Calv.	2.8 65
Calving Int (Days)	-7.4 Daus 0	Dau Calving	5.1 37
Survival (%)	+3.7 Herds 0	Gest Len (Days)	-3.6 70
HEALTH		Calf Mort	0.5 49
Lameness	0.02 Average	BEEF	
SCC	-0.01 Average	Carcass Wt	-14 Lighter
Mastitis (%)	-0.02 Good	Carcass Conf	-1 Average
		TYPE	
		Overall	0
		Udder	-1
		Feet and Legs	1

- A leader for maintenance index
- Lower body size & super percentages
- +0.19% Protein
- Excellent feet

Sire:	ROSSBANE LEO 1112 / FR4103						
Dam:	NEXTGEN WGM CATHY 3086 (G 78)						
Dam Yields:							
	Milk Kgs	Fat Kgs	Ptn Kgs	F+P	BFat%	Ptn%	Clv Int
6 Lact	6621	354	263	617	5.35	3.97	313
Ave	5777	294	225	519	5.07	3.88	365
Life (7 Lct)	37278	1869	1430	3299	5.01	3.84	
G Sire	WOODCOTE GR METEOR-ET S3F / WGM						
G Dam	KILDARRA HZO CATHY						
	Milk Kgs	Fat Kgs	Ptn Kgs	F+P	BFat%	Ptn%	Clv Int
6 Lact	7476	329	274	603	4.40	3.66	364
Ave	5658	238	207	445	4.22	3.68	355
Life (9 Lct)	48884	2027	1775	3802	4.15	3.63	

Fiveo PED

HO-FR EBI

A.I. Code: **FR5971**

(IG) VIADUCTVIEW FIVEO

81% Hol

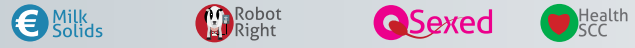
Albert x Daffy x HMY

aAa: -

HB No.: **HOLIRLM214489762221**

Beta Casein: A1/A2

Bred by: Donal Mcsweeney, Togher, Co Cork



FR5971 (IG) VIADUCTVIEW FIVEO Dam

Genomic, ICBF November 2020			
	€	Rel	
EBI	€257	51	
Production	€102	71	
Fertility	€101	35	
Calving	€43	54	
Beef	€-13	41	
Health	€12	57	
Maintenance	€8	38	
Management	€4	49	

PRODUCTION		MANAGEMENT	
Milk (Kg)	170 Daus 0	Temperament	0.11 Average
Fat (Kg)	22 Herds 0	Milking Speed	-2 Average
Protein (Kg)	12 % Rel 71	CALVING	
Fat %	+0.26	Heifer Calv. Diff	6.1 54 0 Rec
Protein (%)	+0.11	Heifer Calv. Risk	Low
FERTILITY		Cow Calv.	2.2 63
Calving Int (Days)	-4.8 Daus 0	Dau Calving	4.5 33
Survival (%)	+3.2 Herds 0	Gest Len (Days)	-3.4 60
HEALTH		Calf Mort	-0.2 47
Lameness	-0.06 Good	BEEF	
SCC	-0.08 Average	Carcass Wt	-5 Average
Mastitis (%)	-0.05 Good	Carcass Conf	-1 Average
		TYPE	
		Overall	0
		Udder	0
		Feet and Legs	0

- New Graduate with very attractive EBI profile
- Great index for production, fertility, health
- +0.24% fat
- Sexed semen available

Sire:	(IG) BALLYGOWN ALBERT						
Dam:	VIADUCTVIEW 2004 SNOWDROP						
Dam Yields:							
	Milk Kgs	Fat Kgs	Ptn Kgs	F+P	BFat%	Ptn%	Clv Int
3 Lact	5793	290	208	498	5.00	3.59	375
Ave	5455	294	196	490	5.46	3.58	364
Life (3 Lct)	14034	749	496	1245	5.34	3.53	
G Sire	COOLNASOON ART						
G Dam	VIADUCTVIEW HMY SNOWDROP						
	Milk Kgs	Fat Kgs	Ptn Kgs	F+P	BFat%	Ptn%	Clv Int
6 Lact	7678	433	260	693	5.64	3.39	390
Ave	6495	324	222	546	4.93	3.43	378
Life (6 Lct)	34332	1699	1167	2866	4.95	3.40	

Cosmic PED

HO-FR EBI

A.I. Code: **FR5593**

(IG) OAKGLEN COSMIC

88% Hol

Jack x HMY x BQN

aAa: -

HB No.: HOLIRLM222544771004

Beta Casein: A2/A2

Bred by: Gerard Mc Mahon, Carrignavar, Co Cork



FR5593 Oakglen Cosmic Dam

Genomic, ICBF November 2020		
	€	Rel
EBI	€248	62
Production	€109	79
Fertility	€81	47
Calving	€62	75
Beef	€-17	47
Health	€-3	70
Maintenance	€9	49
Management	€8	60

PRODUCTION		
Milk (Kg)	224	Daus 0
Fat (Kg)	24	Herds 0
Protein (Kg)	14	% Rel 79
Fat %	+0.25	
Protein (%)	+0.10	

FERTILITY		
Calving Int (Days)	-4.4	Daus 0
Survival (%)	+2.0	Herds 0

HEALTH		
Lameness	-0.02	Average
SCC	0.10	Average
Mastitis (%)	0.00	Average

MANAGEMENT		
Temperament	0.13	Average
Milking Speed	-11	Fast

CALVING		
	% Rel	Note
Heifer Calv. Diff	3.7	63 69 Rec
Heifer Calv. Risk		Low
Cow Calv.	1.9	78
Dau Calving	5.2	43
Gest Len (Days)	-5.3	91
Calf Mort	-0.6	65

BEEF		
Carcass Wt	-8	Average
Carcass Conf	-1	Average

TYPE		
Overall	-1	
Udder	0	
Feet and Legs	-1	

- Outstanding production
- Easy Calving
- Correct udders
- +0.25% fat

Sire:	(IG) KNOCKDOE JACK / FR4020						
Dam:	OAKGLEN HMY CAMILLA (GP 84)						
Dam Yields:							
	Milk Kgs	Fat Kgs	Ptn Kgs	F+P	BFat%	Ptn%	Clv Int
4 Lact	7823	362	311	673	4.63	3.98	366
Ave	6909	332	264	596	4.82	3.82	362
Life (4 Lct)	27723	1335	1062	2397	4.82	3.83	
G Sire	HIGHMOUNT KENNY / HMY						
G Dam	OAKGLEN BQN CAMILLA (VG 89)						
	Milk Kgs	Fat Kgs	Ptn Kgs	F+P	BFat%	Ptn%	Clv Int
4 Lact	8349	394	316	710	4.72	3.78	383
Ave	7640	337	284	621	4.40	3.72	364
Life (6 Lct)	46504	2055	1736	3791	4.42	3.73	

Zoro SRM

HO-FR EBI

A.I. Code: **FR4337**

(IG) GABRIEL ZORO

75% Hol

Ronaldo x BUG x MTZ

aAa: 153624

HB No.: HOLIRLM216138190945

Beta Casein: A1A2

Bred by: Donal Mccarthy, Ballydehob, Co Cork



FR4337 Dam - Gabriel BUG Susy

Genomic, ICBF November 2020		
	€	Rel
EBI	€248	65
Production	€105	78
Fertility	€88	47
Calving	€42	89
Beef	€-10	64
Health	€8	66
Maintenance	€9	55
Management	€5	58

PRODUCTION		
Milk (Kg)	27	Daus 0
Fat (Kg)	12	Herds 0
Protein (Kg)	14	% Rel 78
Fat %	+0.19	
Protein (%)	+0.23	

FERTILITY		
Calving Int (Days)	-4.9	Daus 0
Survival (%)	+2.1	Herds 0

HEALTH		
Lameness	-0.06	Good
SCC	0.00	Average
Mastitis (%)	-0.04	Good

MANAGEMENT		
Temperament	0.11	Average
Milking Speed	-3	Average

CALVING		
	% Rel	Note
Heifer Calv. Diff	6.6	96 12278 Rec
Heifer Calv. Risk		Low
Cow Calv.	2.6	99
Dau Calving	5.7	43
Gest Len (Days)	-4.7	99
Calf Mort	-0.2	99

BEEF		
Carcass Wt	-7	Average
Carcass Conf	0	Average

TYPE		
Overall	-2	
Udder	-1	
Feet and Legs	-1	

- A leader for milk solids
- +0.23% Protein
- Strong all-round performer
- Sexed semen

Sire:	(IG) OLCASTLETOWN RONALDO / FR2298						
Dam:	GABRIEL BUG SUSY (VG 85)						
Dam Yields:							
	Milk Kgs	Fat Kgs	Ptn Kgs	F+P	BFat%	Ptn%	Clv Int
6 Lact	6746	349	275	624	5.17	4.08	411
Ave	6327	299	247	546	4.72	3.89	366
Life (6 Lct)	36160	1678	1395	3073	4.64	3.86	
G Sire	BUSY BROOK RASTUS-ET S3F / BUG						
G Dam	GABRIEL SUSY						
	Milk Kgs	Fat Kgs	Ptn Kgs	F+P	BFat%	Ptn%	Clv Int
3 Lact	6126	268	211	479	4.42	3.49	411
Ave	5831	245	201	446	4.21	3.45	371
Life (3 Lct)	16345	676	556	1232	4.14	3.40	

Mayson SRM

(IG) CAHERAGH MAYSON

Maestro x HMY x SOK

HB No.: HOLIRLM217109120749

Bred by: Charles Hegarty, Drimoleague, Co Cork



A.I. Code: **FR4532**

78% Hol

aAa: 234156

Beta Casein: A1A2



FR4532-GDam Caheragh SOK Massie 512

Genomic, ICBF November 2020		€	Rel
EBI		€245	65
Production		€120	79
Fertility		€57	47
Calving		€56	90
Beef		€-8	61
Health		€5	67
Maintenance		€12	51
Management		€4	58

PRODUCTION		MANAGEMENT	
Milk (Kg)	132 Daus 0	Temperament	-0.02 Average
Fat (Kg)	25 Herds 0	Milking Speed	-14 Fast
Protein (Kg)	14 % Rel 79	CALVING	
Fat %	+0.34	Heifer Calv. Diff	5.4 98 4838 Rec
Protein (%)	+0.15	Heifer Calv. Risk	Low
FERTILITY		Cow Calv.	2.2 99
Calving Int (Days)	-3.2 Daus 0	Dau Calving	4.4 46
Survival (%)	+1.4 Herds 0	Gest Len (Days)	-4.7 99
HEALTH		Calf Mort	-0.2 98
Lameness	-0.02 Average	BEEF	
SCC	-0.04 Average	Carcass Wt	-3 Average
Mastitis (%)	-0.02 Good	Carcass Conf	-1 Average
		TYPE	
		Overall	0
		Udder	0
		Feet and Legs	-1

- A leader for Production index
- Almost 40 kgs milk solids
- Massive +0.34% fat
- Easy Calving

Sire:	KILDARRA MAESTRO / FR2053						
Dam:	CAHERAGH HMY MASSIE 610						
Dam Yields:							
	Milk Kgs	Fat Kgs	Ptn Kgs	F+P	BFat%	Ptn%	Clv Int
5 Lact	6592	313	256	569	4.90	3.88	371
Ave	6030	281	228	509	4.66	3.78	345
Life (5 Lct)	26213	1218	978	1453	4.75	3.75	
G Sire	HIGHMOUNT KENNY / HMY						
G Dam	CAHERAGH SOK MASSIE 512						
	Milk Kgs	Fat Kgs	Ptn Kgs	F+P	BFat%	Ptn%	Clv Int
5 Lact	6269	248	218	466	4.17	3.61	415
Ave	5676	228	198	426	4.02	3.49	375
Life (5 Lct)	26639	1056	918	1974	3.96	3.45	

HO-FR EBI

Nova SRM

(IG) BALLYMAW NOVA SRM

Anton x Lamont x Keet

HB No.: HOLIRLM216396031710

Bred by: Patrick McGrath, Waterfall, Co Cork



A.I. Code: **FR4738**

72% Hol

aAa: 165243

Beta Casein: A2/A2



FR4738 GDam Ballymaw Nora EX91

Genomic, ICBF November 2020		€	Rel
EBI		€234	62
Production		€99	78
Fertility		€81	46
Calving		€47	87
Beef		€-12	52
Health		€5	66
Maintenance		€9	47
Management		€5	57

PRODUCTION		MANAGEMENT	
Milk (Kg)	209 Daus 0	Temperament	0.00 Average
Fat (Kg)	18 Herds 0	Milking Speed	-15 Fast
Protein (Kg)	14 % Rel 78	CALVING	
Fat %	+0.16	Heifer Calv. Diff	6.3 83 806 Rec
Protein (%)	+0.11	Heifer Calv. Risk	Low
FERTILITY		Cow Calv.	2.5 95
Calving Int (Days)	-4.8 Daus 0	Dau Calving	5.7 44
Survival (%)	+1.7 Herds 0	Gest Len (Days)	-4.8 99
HEALTH		Calf Mort	-1.1 92
Lameness	-0.08 Good	BEEF	
SCC	0.01 Average	Carcass Wt	-5 Average
Mastitis (%)	0.00 Average	Carcass Conf	-1 Average
		TYPE	
		Overall	0
		Udder	-1
		Feet and Legs	0

- Sexed Semen
- Over 30 kgs milk solids
- Double digit percentages
- Strong health & management traits

Sire:	(IG) DIAMOND ANTON / FR2239						
Dam:	BALLYMAW NORA 1316 (G 78)						
Dam Yields:							
	Milk Kgs	Fat Kgs	Ptn Kgs	F+P	BFat%	Ptn%	Clv Int
4 Lact	7229	470	264	734	6.50	3.66	374
Ave	6233	399	238	637	6.40	3.82	365
Life (4 Lct)	21689	1420	824	2244	6.55	3.80	
G Sire	MORRIS TF LAMONT S1F / MSF						
G Dam	BALLYMAW NORA 494 (EX 90)						
	Milk Kgs	Fat Kgs	Ptn Kgs	F+P	BFat%	Ptn%	Clv Int
12 Lact	7278	410	271	681	5.63	3.72	473
Ave	5945	377	215	592	6.41	3.61	378
Life (12 Lct)	71506	4533	2592	7125	6.34	3.62	

Milan PED

(IG) RONNOCO MILAN

GZY x HZB x BHZ

HB No.: HOLIRLM218815051405

Bred by: Colm O'Connor, Glanworth, Co Cork

A.I. Code: **FR4510**

81% Hol

aAa: 543126

Beta Casein: A2A2



CONDORA PAT KEETJE HZB.jpg

Genomic, ICBF November 2020		
	€	Rel
EBI	€233	66
Production	€95	79
Fertility	€102	50
Calving	€26	90
Beef	€-15	63
Health	€14	70
Maintenance	€9	52
Management	€1	60

PRODUCTION			MANAGEMENT		
Milk (Kg)	-15	Daus 0	Temperament	0.13	Average
Fat (Kg)	11	Herds 0	Milking Speed	13	Below Ave
Protein (Kg)	12	% Rel 79	CALVING		
Fat %	+0.20		Heifer Calv. Diff	6.3	91 3731 Rec
Protein (%)	+0.22		Heifer Calv. Risk	Low	
FERTILITY			Cow Calv.	2.9	99
Calving Int (Days)	-5.6	Daus 0	Dau Calving	5.5	49
Survival (%)	+2.5	Herds 0	Gest Len (Days)	-2.7	99
HEALTH			Calf Mort	-0.6	98
Lameness	-0.08	Good	BEEF		
SCC	-0.07	Average	Carcass Wt	-8	Average
Mastitis (%)	-0.06	Good	Carcass Conf	-1	Average
			TYPE		
			Overall	-1	
			Udder	-1	
			Feet and Legs	-1	

• Comments

Sire:	GADDAGH CUDDY REEKS / GZY						
Dam:	RONNOCO HZB MILLIE						
	Dam Yields:						
	Milk Kgs	Fat Kgs	Ptn Kgs	F+P	BFat%	Ptn%	Clv Int
4 Lact	7715	311	298	609	4.37	3.87	369
Ave	7299	301	279	580	4.13	3.82	361
Life (4 Lct)	25689	1056	972	2028	4.11	3.78	
G Sire	(IG) BALLYDEHOB PAT 1356 / HZB						
G Dam	RONNOCO BHZ MILLIE						
	Milk Kgs	Fat Kgs	Ptn Kgs	F+P	BFat%	Ptn%	Clv Int
3 Lact	6252	309	263	572	5.01	4.20	380
Ave	5754	279	233	512	4.86	4.04	376
Life (3 Lct)	16192	770	645	1415	4.76	3.98	

Norm SRM

(IG) KEALFINCHEON NORMAN

WLY x WGM x RUU

HB No.: HOLIRLM141761211686

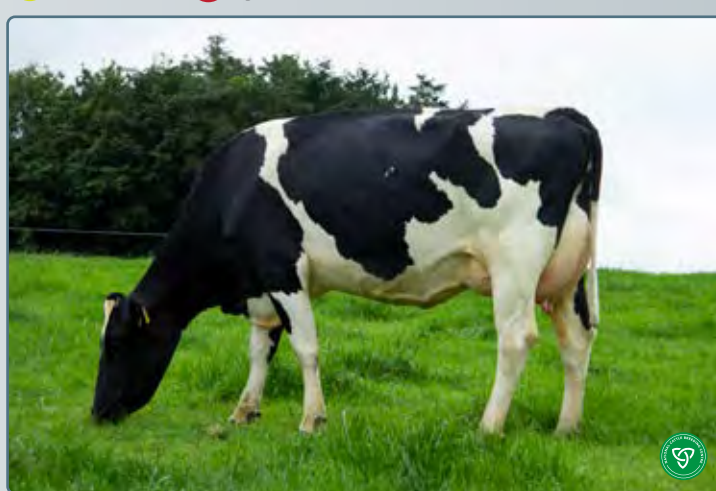
Bred by: Brendan Hinchion, Macroom, Co Cork

A.I. Code: **FR2005**

66% Hol

aAa: 531426

Beta Casein: A2A2



FR2005 Norman Daughter

Irish Daughter, ICBF November 2020		
	€	Rel
EBI	€223	94
Production	€85	99
Fertility	€76	88
Calving	€48	98
Beef	€-12	98
Health	€6	93
Maintenance	€18	95
Management	€3	79

PRODUCTION			MANAGEMENT		
Milk (Kg)	-15	Daus 2555	Temperament	-0.11	Below Ave
Fat (Kg)	22	Herds 901	Milking Speed	-21	Fast
Protein (Kg)	7	% Rel 99	CALVING		
Fat %	+0.39		Heifer Calv. Diff	6.1	97 7219 Rec
Protein (%)	+0.12		Heifer Calv. Risk	Low	
FERTILITY			Cow Calv.	2.7	99
Calving Int (Days)	-4.1	Daus 696	Dau Calving	5.4	91
Survival (%)	+2.0	Herds 1744	Gest Len (Days)	-5.1	99
HEALTH			Calf Mort	-0.4	99
Lameness	-0.04	Good	BEEF		
SCC	-0.04	Average	Carcass Wt	-3	Average
Mastitis (%)	-0.02	Good	Carcass Conf	-1	Average
			TYPE		
			Overall	0	
			Udder	1	
			Feet and Legs	-2	

• Comments

Sire:	IMLEACH LUCKY WHISTLER / WLY						
Dam:	KEALFINCHEON METEOR NORA						
	Dam Yields:						
	Milk Kgs	Fat Kgs	Ptn Kgs	F+P	BFat%	Ptn%	Clv Int
5 Lact	6453	265	251	516	4.11	3.90	332
Ave	6166	285	249	534	4.62	4.03	370
Life (5 Lct)	28135	1275	1112	2387	4.50	4.00	
G Sire	WOODCOTE GR METEOR-ET S3F / WGM						
G Dam	KEALFINCHEON RUUD NORA						
	Milk Kgs	Fat Kgs	Ptn Kgs	F+P	BFat%	Ptn%	Clv Int
6 Lact	7503	296	271	567	3.94	3.62	325
Ave	5992	239	214	453	4.00	3.57	553
Life (5 Lct)	20694	797	716	1513	3.85	3.46	

Ebony PED

(IG) MONABROGUE EBONY

Art x CHQ x LDU

HB No.: HOLIRLM211142624165

Bred by: Sean Gibbons, Woodsgift, Co Kilkenny



A.I. Code: **FR4481**

81% Hol

aAa: 432156

Beta Casein: A2A2



FR4481 Dam MONABROGUE STAR 22

Genomic, ICBF November 2020		
	€	Rel
EBI	€213	64
Production	€110	77
Fertility	€62	47
Calving	€45	90
Beef	€-23	66
Health	€-3	67
Maintenance	€13	52
Management	€9	59

PRODUCTION			MANAGEMENT		
Milk (Kg)	293	Daus 0	Temperament	0.15	Good
Fat (Kg)	14	Herds 0	Milking Speed	-11	Fast
Protein (Kg)	18	% Rel 77	CALVING		
Fat %	+0.05		Heifer Calv. Diff	7.2	99 10477 Rec
Protein (%)	+0.13		Heifer Calv. Risk	Low	
			Cow Calv.	2.9	99
FERTILITY			Dau Calving	6.2	45
Calving Int (Days)	-2.7	Daus 0	Gest Len (Days)	-6.1	99
Survival (%)	+2.2	Herds 0	Calf Mort	0.2	99
HEALTH			BEEF		
Lameness	0.00	Average	Carcass Wt	-11	Average
SCC	0.05	Average	Carcass Conf	-1	Below Ave
Mastitis (%)	0.01	Average	TYPE		
			Overall	1	
			Udder	1	
			Feet and Legs	1	

- Sexed Semen
- +0.13% Protein
- Correct udders
- Over €100 Production

Sire:	COOLNASOON ART / FR2249						
Dam:	MONABROGUE STAR 22 (VG 85)						
	Dam Yields:						
	Milk Kgs	Fat Kgs	Ptn Kgs	F+P	BFat%	Ptn%	Clv Int
3 Lact	8292	343	288	631	4.14	3.47	369
Ave	6865	290	236	526	4.26	4.33	3
Life (3 Lct)	20367	860	699	1559	4.22	3.43	
G Sire	(IG) CACANODE HAROLD / CHQ						
G Dam	MONABROGUE STAR 19 LDU						
	Milk Kgs	Fat Kgs	Ptn Kgs	F+P	BFat%	Ptn%	Clv Int
2 Lact	6456	246	217	463	3.80	3.36	378
Ave	6143	230	205	435	3.74	3.34	378
Life (2 Lct)	6288	233	209	442	3.71	3.32	

HO-FR EBI

Luke SRM

(IG) MODELIGO LUKE

AKZ x UYC x WAU

HB No.: HOLIRLM151620943800

Bred by: David Lonergan, Ballyduff, Co Waterford



A.I. Code: **FR2079**

56% Hol

aAa: 516342

Beta Casein: A2A2



FR2079-Dam Modeligo UYC Lucy 2258

Irish Daughter, ICBF November 2020		
	€	Rel
EBI	€210	94
Production	€77	99
Fertility	€82	88
Calving	€53	98
Beef	€-21	99
Health	€-1	92
Maintenance	€14	97
Management	€5	79

PRODUCTION			MANAGEMENT		
Milk (Kg)	-153	Daus 2852	Temperament	0.04	Average
Fat (Kg)	15	Herds 821	Milking Speed	-11	Fast
Protein (Kg)	6	% Rel 99	CALVING		
Fat %	+0.37		Heifer Calv. Diff	5.5	99 8726 Rec
Protein (%)	+0.19		Heifer Calv. Risk	Low	
			Cow Calv.	2.4	99
FERTILITY			Dau Calving	5.3	92
Calving Int (Days)	-3.5	Daus 812	Gest Len (Days)	-5.0	99
Survival (%)	+3.1	Herds 2276	Calf Mort	-0.9	99
HEALTH			BEEF		
Lameness	0.01	Average	Carcass Wt	-12	Lighter
SCC	0.03	Average	Carcass Conf	-1	Average
Mastitis (%)	-0.01	Average	TYPE		
			Overall	-1	
			Udder	0	
			Feet and Legs	-1	

- Daughter Proven
- +0.19% Protein
- Moderate size
- Short Gestation

Sire:	ARKAN GH HORIZON S2F AKZ						
Dam:	MODELIGO UYC LUCY 2258						
	Dam Yields:						
	Milk Kgs	Fat Kgs	Ptn Kgs	F+P	BFat%	Ptn%	Clv Int
6 Lact	6817	316	254	570	4.64	3.73	335
Ave	6012	266	219	485	4.46	3.64	362
Life (7 Lct)	40588	1777	1466	3243	4.38	3.61	
G Sire	SRB COLLINS ROYAL HUGO						
G Dam	MODELIGO WAU LUCY 1356						
	Milk Kgs	Fat Kgs	Ptn Kgs	F+P	BFat%	Ptn%	Clv Int
2 Lact	5201	250	197	447	4.81	3.78	325
Ave	4745	214	174	388	4.49	3.66	355
Life (5 Lct)	21636	957	783	1740	4.42	3.62	

Selective Dry Cow: Reducing Antibiotic usage

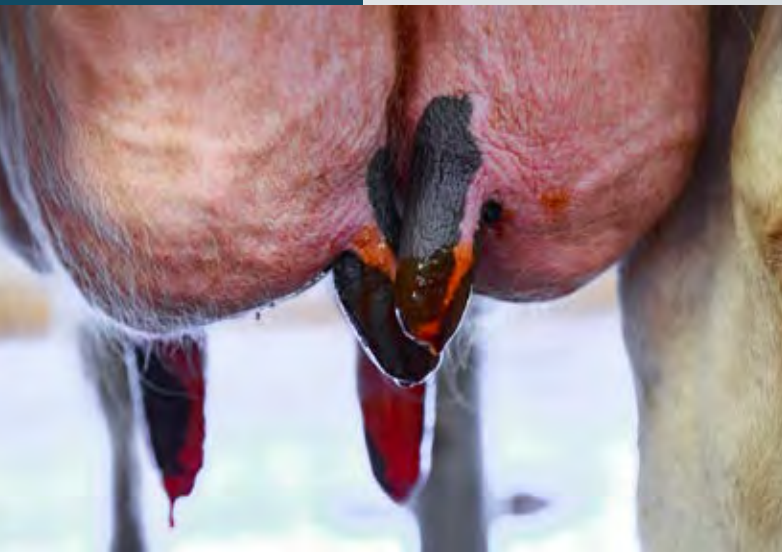
Herd Selection

- Bulk Tank SCC consistently <200,000 cells/ml
- Milk recording: ideally monthly
- Records of clinical cases and outcomes
- <2% clinical case rate in the last 3 months of lactation

Cow selection

- SCC consistently <200,000
- No clinical case throughout the lactation
- For added 'security': CMT
- Ensure that there's no high SCC quarter
- Accurate herd & animal selection critical!!!!
- Work in consultation with your vet

Make a plan: Dry off procedure & hygiene critical



Milk Recording data at your fingertips

Bord bia compliance available at the click of a button

Real-time herd management

Data synced seamlessly with ICBF



Test Results Report

Date	lf	fr	ms	SCC	Dis	Cows	Days
09/09/19	23.1	1.73	103	109			
07/09/19	23.9	1.73	114	109			
05/09/19	22.4	1.72	100	109			
03/09/19	24.9	1.84	92	109			
01/09/19	22.8	1.63	88	109			
30/08/19	22.5	1.64	108	109			
28/08/19	22.6	1.77	112	109			
26/08/19	24.4	1.80	107	109			
24/08/19	22.7	1.68	106	109			
22/08/19	24.5	1.83	103	109			
20/08/19	25.2	1.85	74	109			
18/08/19	22.6	1.78	80	109			
16/08/19	26.2	2.02	52	109			
14/08/19	23.7	1.65	76	109			
12/08/19	23.4	1.71	88	109			
10/08/19	23.9	1.93	92	109			

Selective Dry Cow Report

Dry cow settings

Dry ahead to part to dry:

Dry days for heifers:

Dry days for cows:

Include unweaned cows:

Selective dry cow therapy (SDCT):

Cows with the selected number of cows of SCC quarter (lowest SCC value) are placed for anti-biotic dry cow treatment. Cows with 1 or more cows of heifers during the current lactation are also included. These cows are shown in red in the queue to dry list.

Max: SCC above:

[Save rules and Select again](#)

Milk Preg Testing for better breeding performance

Via post or milk recording



Pregnancy Diagnosis from milk samples

1. Simple: uses milk recording or other milk sample
2. Easy: No extra work
3. Effective: Comparable accuracy to scanning
4. Complements scanning and fits into a managed fertility programme.
5. Use from 28 days post breeding

After Breeding Season Check

1. Cost effective
2. No labour and cow handling
3. Better animal welfare
4. Less human stress
5. Normally done using herd milk recording samples, best after day 60 of pregnancy
6. Results via HerdApp or ICBF Database

Mid-Breeding Season Check

1. Early check as soon as cows pass 28 days
2. Non-pregnant cows can be re-bred within the breeding season
3. Option for farmer to collect samples
4. Cost effective
5. No labour and cow handling
6. Better animal welfare
7. Samples via post, results by text
8. Highest accuracy from day 28 to 40
9. Sampling kits available from PG staff

From
€3.60
per test

Recommended Synchronisation Programmes

Day	Simple Heifer		Heifer Fixed Time		Dairy Cow			Beef Cow
	Day	Action	Day	Action	Day	Action	Day	
Monday	0	Observe Heats 5 Times per Day A.I. Heifers with Observed heat (AM/PM rule)	0	PRID/CIRD	0	GnRH + PRID/CIRD	0	GnRH + PRID/CIRD
Tuesday	1		1		1		1	
Wednesday	2		2		2		2	
Thursday	3		3		3		3	
Friday	4		4		4		4	
Saturday	5		5	PG & Prid Out	5		5	
Sunday	6		6		6		6	
Monday	7	PG heifers not Bred	7		7	PG 10 am & Prid Out	7	PG + eCG10 am & Prid Out
Tuesday	8	A.I. Heifers with Observed heat (AM/PM rule)	8	GnRH + AI	8		8	
Wednesday	9		9	GnRH 4pm	9		9	
Thursday	10		10	AI 10 am	10	GnRH + AI 10 am	10	
Friday	11							
Saturday	12							
Sunday	13							
Monday	14							
Tuesday	15							
Wednesday	16							
Thursday	17	PG heifers not Bred						
Friday	18							
Saturday	19							
Sunday	20	Fixed Time A.I. 72 hrs						
Monday	21	Fixed Time A.I. 96 hrs						

PG = Prostaglandin injection = Prostaglandin such as Enzaprost, Estrumate or Lutalyse
 PRID/CIRD = progesterone intravaginal device
 GnRH = injection of Receptal, Ovarelin, Acegon
 eCG = Syncrostim or Folligon PMSG
 All are POM prescription only medicines

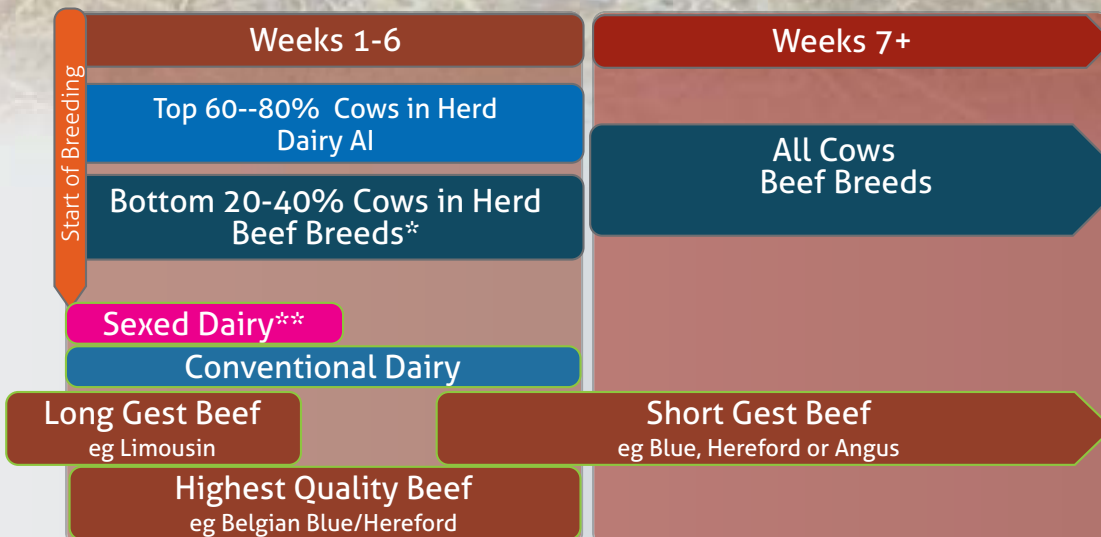
- Heifers must be cycling to respond to prostaglandin synchronisation regimes.
- Ensure that heifers are well grown (>320 kg BW) and in good body condition (>3.25) to maximise likelihood that they have commenced cycling prior to mating start date

Quality Beef Sires for the Dairy Herd

Maximising Calf Value



Maximising Calf Crop Value



Select bulls easy calving enough for your cow type, then the best Beef Value available.

Beef Value = Calf Quality & Carcass Weight/Conformation.

General recommendations:
 <2% Calving Difficulty for Heifers, <3.5% For 2nd Calvers

Angus for Dairy Cows

Bull	Name	Beef Value	Calving Value	Gestation	Dairy Cow Cdiff	Dairy Cow Cdiff Rel	DBI	DBI Rel	Use on
AA4640	HW FARGHAL T516	€65	€22	-0.6	3.2%	94%	€86	72%	2nd Calvers
AA5280	COOLRAIN PATRIARCH	€64	€49	-2.2	2.7%	87%	€113	65%	2nd Calvers
AA5310	GABRIEL POUNDMAN	€55	€44	-2.1	2.6%	81%	€99	63%	2nd Calvers
AA4088	INTELAGRI MAVERICK E.T. (ET)	€54	€48	-3.3	3.1%	99%	€103	95%	2nd calvers
AA2309	ST AODAIN L MASTER	€52	€4	-0.2	4.2%	97%	€56	94%	Cows
AA6331	DEELISH SHOTGUN test	€65	€32	-1.2	3.0%	51%	€97	49%	Cows test

Angus for Dairy Maidens

Bull	Name	Beef Value	Calving Value	Gestation	Dairy Heifer Cdiff	Dairy Heifer Cdiff Rel	DBI	DBI Rel	Use on
AA4631	GABRIEL PAT 1949	€46	€62	-2.8	5.4%	66%	€108	69%	Maidens
AA4089	INTELAGRI MATTEO E.T. (ET)	€41	€63	-3.9	6.4%	98%	€104	95%	Maidens
AA4632	SALLOWGLEN JAMIE T771	€37	€58	-2.8	5.0%	68%	€95	69%	Maidens

Matteo AA4089



Patriarch AA5280



Master AA2309



Farghal AA4640



Shotgun AA6331



AA5280 Patriarch is perfect for delivering a high value calf & easy calving on second calvers. AA2309 Master is a superb combination of excellent growth & conformation while still maintaining calving ease for mature cows

Limousin for Dairy Cows

Bull	Name	Beef Value	Calving Value	Gestation	Dairy Cow Cdiff	Dairy Cow Cdiff Rel	DBI	DBI Rel	Use on
ZAG	CASTLEVIEW GAZELLE	€129	-€22	4.0	4.5%	99%	€106	98%	Mature cows
LM4217	MOONDHARRIG KNELL	€126	-€23	2.8	5.1%	96%	€104	93%	Mature cows

Knell LM4217



Gazelle ZAG



Hereford for Dairy Cows

Bull	Name	Beef Value	Calving Value	Gestation	Dairy Cow Cdiff	Dairy Cow Cdiff Rel	DBI	DBI Rel	Use on
HE5346	FISHER 1 PROFILE P456 PP	€60	€29	-2.0	3.1%	82%	€89	56%	2nd Calvers
HE4297	FABB 1 NORTHERN STAR PP	€42	€27	-1.8	3.7%	98%	€68	91%	2nd Calvers
HE4643	MOORSIDE 1 PANDA PP	€38	€10	-0.2	3.9%	96%	€48	68%	2nd Calvers
HE5452	ALLOWDALE AXEL	€58	€3	-0.5	4.8%	54%	€61	49%	Cows
HE5298	ALLOWDALE APACHE	€49	€14	-0.7	4.5%	81%	€63	65%	Cows
HE4291	ALLOWDALE ADVANCE 573 ET	€45	-€2	-0.3	4.4%	98%	€43	91%	Cows
HE6364	SOLPOLL 1 SONIC PP test	€34	€5	0.3	3.9%	49%	€38	42%	Cows test

Simmental for Dairy Cows

Bull	Name	Beef Value	Calving Value	Gestation	Dairy Cow Cdiff	Dairy Cow Cdiff Rel	DBI	DBI Rel	Use on
SI2469	LISNACRANN FIFTY CENT	€75	-€33	0.6	6.3%	96%	€42	94%	cows

Northern Star HE4297



Advance HE4291



Panda PP HE4643



Profile HE5346



HE4643 Panda is proving excellent for calving ease for dairy cows and showing great promise for beef traits.
HE4291 Advance first crop of calves show super quality and ideally suited to second calvers.

Fifty Cent SI2469



Belgian Blue for Dairy Cows

Bull	Name	Beef Value	Calving Value	Gestation	Dairy Cow Cdiff	Dairy Cow Cdiff Rel	DBI	DBI Rel	Use on
BB6202	CROFTSEND MAJOR	€138	-€19	-0.5	6.6%	47%	€119	43%	Mature cows
BB6193	BAMS LUDDITE	€125	-€28	0.0	7.0%	46%	€97	43%	Mature cows
BB4487	GREYSTONES JUPITER	€96	-€10	-0.4	6.2%	64%	€86	49%	Mature cows
BB2342	WOODEND HOGAN	€121	-€39	1.0	7.3%	68%	€82	69%	Mature cows
BB6199	MOORSLEY LOGIC	€93	-€14	-0.3	6.1%	46%	€80	43%	Mature cows
BB4369	COOLBANAGHER KING	€125	-€66	2.1	7.2%	87%	€60	69%	Mature cows
BB5226	MARIUS DES PRINCES DE LIGNE	€125	-€131	-1.1	11.0%	67%	-€6	49%	Mature cows
BB6343	RIAN 33 VAN DE PLASHOEVE test	€131	-€95	-0.3	10%	39%	€36	35%	Mature cows test

Aubrac for Dairy Cows

Bull	Name	Beef Value	Calving Value	Gestation	Dairy Cow Cdiff	Dairy Cow Cdiff Rel	DBI	DBI Rel	Use on
AU4683	TURLOUGHMORE MAGNIFICENT	€121	€4	0.8	4.2%	82%	€125	66%	Cows

Hogan BB2342



King BB4369



Magnificent AU4683



Major BB6202



Marius BB5226



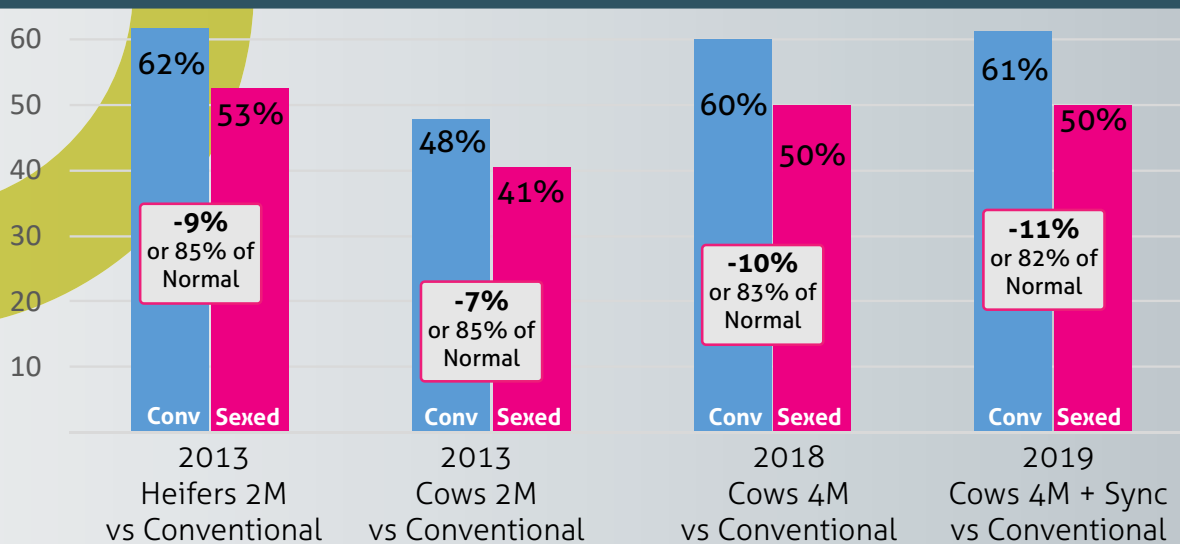
BB4369 King is producing extra special calves with only 7.2% difficult calvings.

BB2342 Hogan is breeding really impressive calves that bring great prices while being a good option for mature cows



Sexed Semen

Irish Field Trial Results to date



Checklist for Sexed Semen Usage:

- 6 Week Calving rate 80%+
- Conception rate to first service 60%
- 80% 3 week Submission rate
- Excellent handling facilities
- Semen Thaw Flask
- Use on heifers that are of:
 - Superior genetics
 - Well grown
 - Free from disease
 - Ideal BCS.
- Excellent heat detection vital
- Use on cows in the 1st 3 weeks of the breeding season along with conventional dairy
- Only use sexed semen on cows with:
 - Superior fertility sub index
 - Calved >60d
 - Expressed a strong oestrus cycle
 - No metabolic or calving issues
 - Free from disease
 - Ideal BCS >3.0
- Use conventional dairy and beef semen for remainder for AI season

Protocol for using frozen Sexed semen

Handling sexed semen

- Make sure goblet and straws labelled for ease finding straw
- Use tweezers
- Never take out an individual straw to look at it and then put it back.
- Minimise the length of time that a straw container is kept above the liquid nitrogen level while removing the straw to be used.

Straw thawing

- Check the temperature of the water in your thawing device with a thermometer.
- Only remove one straw at a time for thawing.
- Flick the straw to remove any trapped nitrogen.
- Thaw the straw straight away in an electric thawer at 37°C for 40 seconds.
- Thoroughly dry the straw; water kills sperm.
- Use clean straw cutters, or sharp scissors to cut off the sealed end circa 1 cm from top with a straight cut.
- Once thawed don't let the straw cool down again.
- Pre-warm the A.I. equipment and keep it insulated until the insemination (especially in cold weather).
- Animals should be inseminated within five minutes of removing the straw from the tank.
- Once thawed, straws cannot be re-frozen.
- Do not split straws.
- Inseminate straw within 5 minutes of thawing & ensure stable temperature before insemination

Service time

1. Heat observation
 - Observe heifers / cows at least three times daily for at least 15 minutes especially in between milking and feeding times.
 - Many cows may show very short periods of standing heat. Evening heat detection is essential. Record standing heats accurately to verify regular oestrus cycle length. Cows or heifers with abnormal cycle length will be less fertile.
 - Other signs of oestrus e.g. Mounting, chin resting, vocalization can be less reliable signs of heat. Less valuable semen can be used to serve these animals, even using two inseminations 24 hours apart. This is not advised for sexed semen.
 - Heat detection aids are very important
2. The service period
 - During this period you should ensure stress free handling to ensure best results, service should be carried out 14-20 hours after the onset of standing oestrus. Heat synchronisation programmes should only be used in conjunction with good heat detection and not based on fixed time a.i.
 - Animals should be restrained so that they cannot move forwards, backwards or sideways. A proper service area/crush are essential. Quietly move animals in pairs or small groups. Animals on their own become frightened and stressed.
3. A.I. technique
 - Only inseminate heifers that have been identified in standing oestrus. Heifers do have a small cervix which can make it difficult to pass the a.i. gun through.
 - It is important that semen deposition is in the uterine body and not in the cervix or either of the horns.



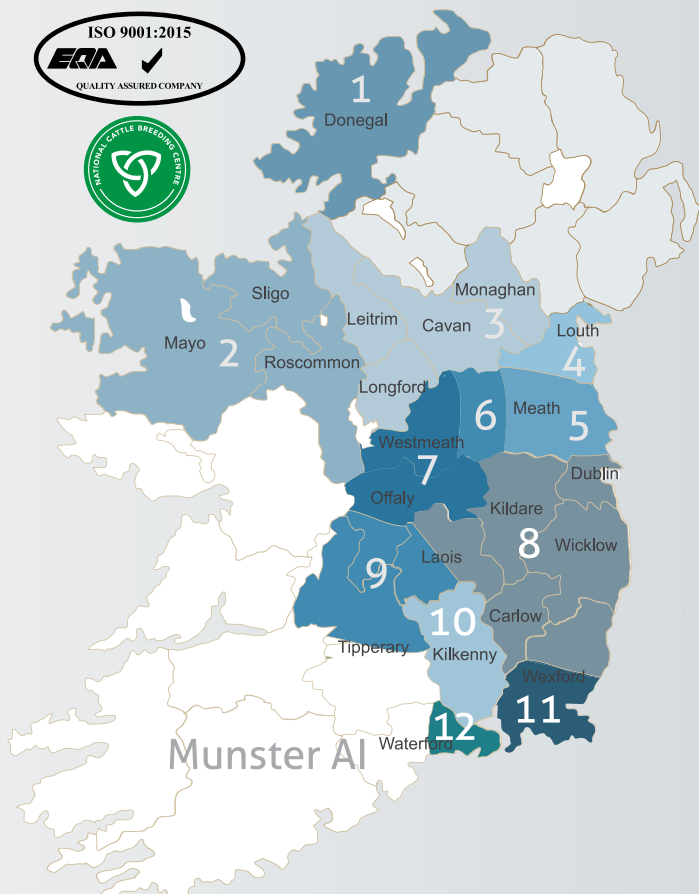
Part of your farm

- NEW Bulk Tank Report
- NEW Problem cow report
- NEW Stock Reconciliation
- Fertility Performance Report
- Calving Pattern Report
- Milk Recording
- NEW Selective Dry Cow
- & More
- & More..



Use on Any device
Phone - Tablet - PC

Tel: 046 924 9964 agrinet.ie Ann Maree 087 1998805



Breeding Advisor & Semen Sales



1. Gerard McCool
087 - 2057588
Donegal



2. John Griffith
086 - 8431624
Sligo, Mayo,
Roscommon



3. Deirdre Toal
087 - 2599314
Monaghan,
Longford, Cavan,
Leitrim



4. John McDaniel
087 - 2360318
Louth & Inniskeen
Area



5. Michael Quinn
086 - 3892908
East Meath, North
Dublin



6. Leo Davis
086 - 8197114
Kells Area &
Westmeath East



7. Violet Nevin
087 - 6253395
Westmeath,
North Offaly



8. Trevor Hanly
087 - 2272446
087 - 9148922
Carlow, Wicklow,
Kildare, E Laois,
Nth Wexford



Seamus Hughes
Sales Manager
087 - 2331235



Shane Leane
Technical Sales
Manager
086 - 7514121



Stephen Connolly
Milk Recording
Manager
086 - 0318380
046 - 9540606



9. Sean Hayes
087 - 2757835
Tipperary, West
Laois, South
Offaly



10. Denis Dalton
087 - 6785875
Kilkenny



10. Ger Power
086 - 2158505
Kilkenny



10. John Fogarty
087 - 6752401
Part of Tipperary &
Kilkenny



11. Eugene Kehoe
087 - 6842846
South Wexford



12. David Phelan
086 - 8959558
East Waterford

Milk Recording Contacts

Milk Recording Supervisor
Louise Knight 087-2505723

Milk Recording Office
Tel: 046-9540606

Call Centre: 046-9541230 or 1850 20 20 50
www.progressivegenetics.ie

Enfield Office
Rathcore, Enfield
Co. Meath A83 KP98
Tel: 046-9541230

