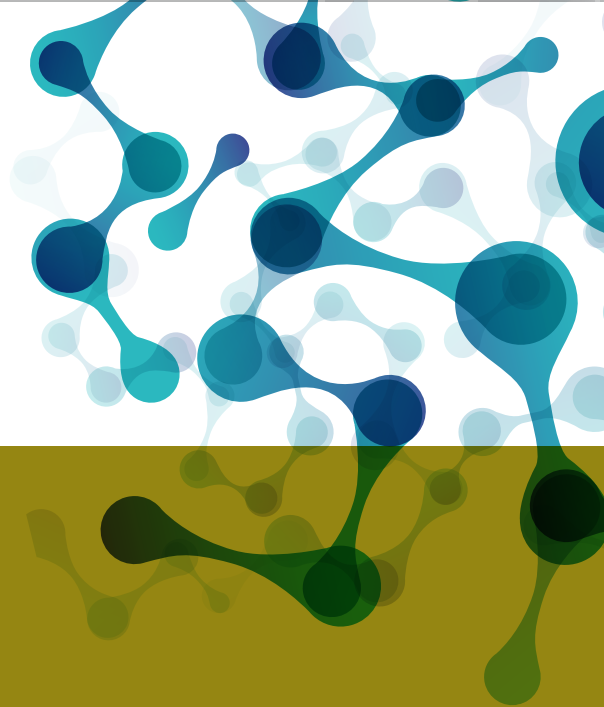


February
2021



G1 DAIRY SIREs



PROGRESSIVE

GENETICS

NOTE NO FIELD FERTILITY DATA AVAILABLE FOR THESE SIREs



WE GIVE YOU A COMPETITIVE ADVANTAGE AND A MORE PROFITABLE FUTURE.

Progressive Genetics are delighted to introduce you to our special catalogue of G1 sires for the Spring 2021 season. Over the past 12 months Progressive Genetics in association with our partners in the National Cattle Breeding Centre (NCBC) have selected over 100 high ranking genomically selected young bulls.

These bulls are at the very early stage of their production cycle but a limited number of doses will be available this season.

The Dairy breeding programme at NCBC is making an enormous contribution to cattle breeding in Ireland being the corner stone in powering the EBI

since its embryonic beginnings in 2000 and over the last 10 years (2010 to 2019) the national herd has demonstrated a significant improvement in performance as outlined in **table 1 & 2 below**. The advantage of using G1 bulls is shown in **table 3**.

The gains that farmers are achieving are reflected in the milk cheque with gains in fat and protein of 60kg over the past 10 years alone.

The G1 sires in this catalogue come from a broad range of families and sires and are reflective of our programmes policy to promote as broad a genetic diversity as possible.

Just a **note of caution** these G1 bulls are only starting to be used in the field so we do not have any field fertility data, field calving ability data or genetic defect data available at this time so they come with that health warning. Although these bulls represent the future and they have been selected using the best data available but this may change therefore you should always use a team of bulls in your herd.

We hope you find some sires of interest in the catalogue and we look forward to a successful AI season in 2021.

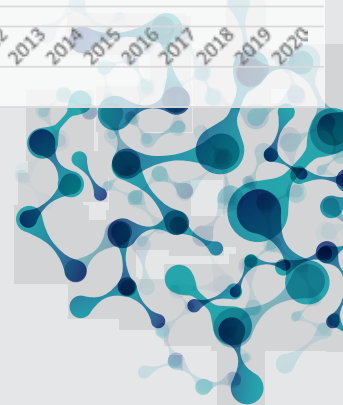
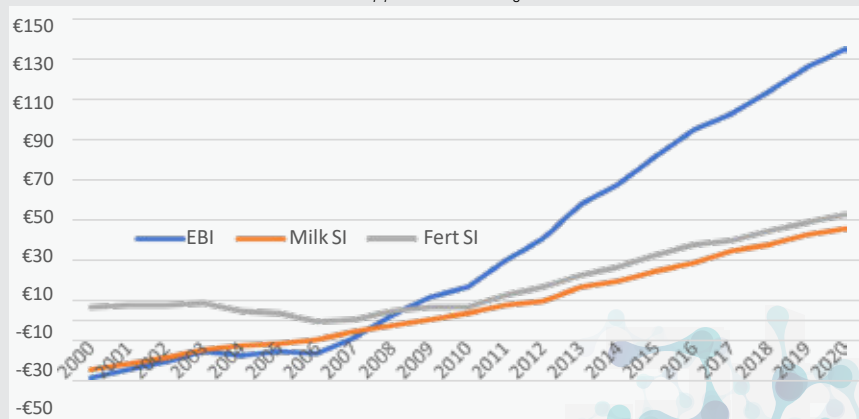
Table 1: Change in the performance of the national dairy herd (2020-2019) Source ICBF 2021

Year	Milk l/cow	Fat%	Protein%	F+P kg/cow	6-week calving rate%
2010	4,966	3.85%	3.37%	359	52%
2019	5,446	4.17%	3.53%	419	65%

Table 2 Analysis based on 6190 herds that had >=30 AI bred cows and >=5 AI bred replacements this year (i.e., born in 2018 and calves in 2020) Source ICBF 2021

% progeny by G1 Sires	Herds	Cows	% by G1 Sires	EBI 2018 Heifers
- Greater 20%	487	140	29%	€164.60
- 10 to 19%	893	142.8	14%	€151.50
- 5 to 9%	1113	131.5	7%	€145.70
- 1 to 5%	1850	121.5	2%	€140.20
- Zero %	1847	98.6	0%	€133.70
Overall	6190	121	6%	€142.80

Table 3: Genetic Trend in EBI by year of first calving Source ICBF 2021



NCBC DAIRY PROGRAMME

- Focused on maximum EBI gain
- Genomic testing 4000 calves per year
- Committed to excellent semen quality
- G1 bulls tested in Genelreland for field fertility data
- Working with Ireland's best cows
- Delivering the best genetics to Progressive Genetics herds

DELIVERING THE BEST

- 5 of top 6 on ICBF Active list Jan '21
- 7 of top 10 G1 bulls for 2021 (data available Jan '21)
- 64 Bulls over €300 EBI including:
 - 2 bulls €350+
 - 12 bulls €330+
 - 29 bulls €320+



PROGRESS FASTER WITH G1 SIRES

NOTE NO FIELD FERTILITY DATA AVAILABLE FOR THESE SIRES



- The next Generation
- Pushing EBI higher than ever
- Semen Limited
- Choice of packs

Progressive Genetics will supply semen from bulls without field fertility data, that has passed quality control but are not responsible for any poor fertility resulting from use of G1 semen

Jan 2021

Team Details	EBI & Sub-Indexes					Production					
Sample Bull Teams	EBI	Prod	Fert	Health	Maint	Milk	Fat	Prot	F+P	Fat	Prot
EBI Balanced	€311	€102	€141	€11	€12	149	18.0	13.3	31	+0.21	+0.14
Production Specialists	€303	€119	€122	€8	€8	188	20.9	15.8	37	+0.23	+0.16
Fertility Specialists	€326	€98	€162	€12	€13	116	18.0	12.1	30	+0.23	+0.14
Health Specialists	€315	€97	€144	€18	€13	136	17.5	12.4	30	+0.21	+0.13
Percentage Specialists	€312	€113	€134	€11	€10	61	19.0	13.5	32	+0.29	+0.20
Maintenance Index	€310	€99	€142	€12	€21	108	17.8	12.2	30	+0.23	+0.15
EBI + Type	€294	€104	€124	€12	€9	217	18.2	14.6	33	+0.16	+0.13
Milk & Solids Specialists	€305	€113	€127	€7	€11	322	19.1	17.4	37	+0.11	+0.11
XBred	€309	€121	€121	€7	€22	113	21.8	14.7	36	+0.30	+0.19

- Large number of bulls in each sample team, several bulls in more than one team
- Individual bulls will be limited
- Consult your breeding advisor for details
- Good selection of PED bulls in each team (Full Pedigree status with IHFA)



▪ EX90 CHQ Dam of Directive son
▪ EBI €276, Type +1.8



▪ LHZ Dam of Early son
▪ EBI €349, Production €100



▪ Whistler Dam of Scorpion son
▪ EBI €301, Production €95

- Book your pack today
- Note G1 bulls have passed all lab quality tests but have no field fertility data yet so some caution required
- Usage Max 10 straws per bull
- Usage Max 15% of herds semen requirements
- Availability of individual bulls subject to semen availability

OUR SEMEN QUALITY STANDARDS

Bull Category	All Bulls	Main Catalogue		
Lab Quality Control Passed	✓	✓	✓	✓
Field Fertility Data Average or above		✓	✓	✓
Top 10% for pregnancy rates & 2000+ Serves recorded			✓	

Progressive Genetics are committed to excellent semen quality and good on-farm fertility results. Progressive Genetics will not be held responsible for the actual fertility achieved from the use of its products.

FR6547 (IG)STAMULLEN LUNASA SRM



- Early x LHZ: EBI €349
- Dam pictured, 6th Lact 3.95% Protein lifetime

PARKDUV OSORNO PED



- Pivotal x Joseph: EBI €326
- Grandam pictured, EX PKK, 5th Lact 3.79% Protein Lifetime

FR6954 (IG)DERRINSALLOW UNACK PED



- Albert x Jack: EBI €320
- Dam pictured as heifer, 3.92% Protein

FR6430 (IG)GHARBHCHOILL FISHER SRM



- Pivotal x Bullet: EBI €303
- Dam pictured, 6th Lact 3.80% Protein lifetime

FR6544 (IG)STAMULLEN SANTINI SRM



- Scorpion x Roberto: EBI €255
- Dam pictured, 4th Lact 4.02% Protein lifetime

*031569 *FAITHFUL SON SRM



- Faithful x Maestro: EBI €327
- Dam pictured, 1st lactation, 3.80% Protein

FR7026

(IG) RICHVALE GRAJO PED



- Albert X Ronaldo: EBI €331
- Grandam x PSZ pictured, 4th lact 3.63% Protein

FR6430

(IG)GHARBHCHOILL FISHER SRM



- Pivotal x Bullet: EBI €303
- Dam pictured, 6th Lact 3.80% Protein lifetime

FR6784 (IG)GHARBHCHOILL MERLIN SRM



- Pivotal x SEW: EBI €322
- Dam pictured, 3rd lact 3.72% Protein

FR6646 (IG)KNOCKREAGH GATSBY SRM



- Albert x Maestro: EBI €315
- Dam pictured, 2nd lact 3.76% Protein

FR6772 (IG)BALLYCARNEY DENMAN PED



- Pivotal x Sebastian: EBI €331
- Dam pictured, 1st lact 3.66% Protein

FR6604 (IG)CAHERGRAM SPELLMAN SRM



- Supreme x OCP: EBI €289
- Dam pictured, 3rd lact 3.91% Protein

FR6772 (IG)BALLYCARNEY DENMAN PED



- Pivotal x Sebastian: EBI €331
- Dam pictured, 1st lact 3.66% Protein

FR6954 (IG)DERRINSALLOW UNACK PED



- Albert x Jack: EBI €320
- Dam pictured as heifer, 3.92% Protein

FR6547 (IG)STAMULLEN LUNASA SRM



- Early x LHZ: EBI €349
- Dam pictured, 6th Lact 3.95% Protein lifetime

FR6430 (IG)GHARBHCHOILL FISHER SRM



- Pivotal x Bullet: EBI €303
- Dam pictured, 6th Lact 3.80% Protein lifetime

FR6433 (IG)STAMULLEN MOZART SRM



- Scorpion x S Whistler: EBI €301
- Dam pictured 2nd lactation, 3.93% Protein lifetime

FR4728 (IG)KILFEACLE PIVOTAL PED



- No. 1 EBI Active list Jan '21
- Sire of many top G1 sons

HEALTH TEAM

MAXIMIZING HEALTH SUB-INDEX

Progressive Genetics Expected G1 Health Bulls January 2021

Jan 2021

Bull Details			EBI & Sub-Indexes						Production					Calv		Pedigree				
CODE	Name	Proof	EBI	Rel	Prod	Fert	Health	Maint	Milk	Fat	Prot	F+P	Fat	Prot	Calv	Gest	Ped	Type	Sire	
*524515	TISAXON TROOPER	G	€362	52	€98	€196	€14	€21	180	17.7	13.1	31	+0.18	+0.12	6.4	-4.1	PED	-0.5	Pivotal	KOZ
FR6547	(IG)ISTAMULLEN LUNASA SRM	G	€349	52	€100	€152	€22	€24	14	16.2	11.4	28	+0.27	+0.19	4.9	-5.1	SRM	-1.6	Early	LHZ
*212559	*Pivotal Son	G	€346	54	€97	€181	€15	€11	181	18.4	12.7	31	+0.19	+0.11	4.8	-3.9	*PED	-0.9	Pivotal	FLT
FR6439	(IG)OAKFARM BEHINS ZEUS	G	€344	51	€106	€151	€22	€20	242	18.4	15.2	34	+0.15	+0.12	2.3	-4.3	PED	-1.0	Pivotal	ABO
*843729	*Pivotal Son	G	€332	52	€77	€179	€14	€23	-13	16.9	6.8	24	+0.31	+0.13	5.3	-3.7	*PED	0.2	Pivotal	JRE
FR6814	(IG)BEDFORDHILL CONOR SRM	G	€327	50	€96	€151	€17	€9	179	16.7	13.2	30	+0.17	+0.12	6.2	-5.2	SRM	-0.2	Albert	FYK
*031569	*Faithful Son	G	€327	54	€92	€145	€20	€9	-26	17.7	9.0	27	+0.33	+0.17	4.8	-4.5	*SRM	-1.7	Faithful	FR2053
*962697	PARKOUV OSORNO	G	€326	51	€107	€136	€14	€15	390	17.9	17.9	36	+0.04	+0.08	4.5	-4.3	PED	-0.7	Pivotal	FR2234
*032215	*Pivotal Son	G	€325	50	€75	€172	€14	€8	188	17.0	9.6	27	+0.16	+0.05	3.9	-4.6	*PED	-1.1	Pivotal	HZB Gio
*574234	*Thady Son	G	€321	51	€89	€147	€20	€12	112	15.0	11.6	27	+0.18	+0.13	4.2	-4.1	*SRM	0.2	Thady	FR2436
*282874	SKEHANAGH SERGIO	G	€321	53	€113	€129	€17	€4	348	20.7	17.2	38	+0.12	+0.09	3.8	-4.6	PED	-0.4	Pivotal	KOZ
FR7011	(IG)COMMEEN PHIL SRM	G	€321	49	€118	€125	€15	€21	176	21.0	15.4	36	+0.24	+0.16	4.8	-4.3	*SRM	0.3	Albert	YAB
FR6517	(IG)SMALLACRE ZANZA SRM	G	€318	50	€96	€155	€22	€23	-81	19.9	8.0	28	+0.41	+0.19	4.8	-4.3	SRM	-0.3	Samir	FR2460
FR6775	(IG)DOIRE SUNDANCE	G	€316	50	€102	€142	€14	€15	233	14.4	15.8	30	+0.09	+0.13	5.7	-4.8	PED	-0.9	Dart	FR2460
*874697	*Virginia Son	G	€314	50	€95	€155	€17	€2	95	19.0	10.9	30	+0.26	+0.13	5.4	-4.3	*SRM	0.1	Virginia	FR2239
*281045	*Albert Son	G	€310	49	€134	€114	€17	€4	75	24.3	15.3	40	+0.37	+0.22	6.8	-5.2	*SRM	0.4	Albert	FR2079
*212762	CLURRA CLASS	G	€310	53	€87	€143	€17	€12	248	14.9	13.3	28	+0.09	+0.08	3.6	-4.5	PED	-0.9	Cyclone	RUU
*491140	*Pivotal Son	G	€308	51	€101	€136	€14	€22	111	19.4	11.9	31	+0.26	+0.14	6.2	-4.6	*SRM	-0.7	Pivotal	WEZ
FR6751	(IG)BLACKBUSH GORYTUS SRM	G	€304	55	€107	€120	€14	€12	98	16.8	13.8	31	+0.22	+0.18	4.6	-4.9	SRM	-1.0	Faithful	FR2131
FR7008	(IG)GANSBROVE GOMEZ SRM	G	€304	53	€98	€135	€15	€14	133	21.5	11.1	33	+0.28	+0.11	3.3	-3.4	SRM	0.2	Ferdinand	LHZ
FR6781	(IG)GREENHILLS PETER	G	€302	51	€96	€140	€19	€6	58	14.2	12.2	26	+0.21	+0.18	5.4	-4.2	PED	0.0	Saxon	AKC
*722204	*Samir Son	G	€297	49	€79	€146	€28	€15	25	13.0	9.2	22	+0.21	+0.14	4.7	-4.3	*SRM	-0.3	Samir	FR2005
FR6421	(IG)ROULMREAGUE IBERNIA	G	€286	51	€70	€137	€17	€7	214	12.0	10.9	23	+0.06	+0.06	5.4	-5.2	PED	1.6	Directive	HMY
*442890	*Samir Son	G	€285	48	€108	€120	€19	€22	-48	23.1	9.5	33	+0.44	+0.20	4.8	-2.5	*SRM	-2.0	Samir	Alfie Son
FR6451	(IG)RAGLAN OMEGA PROFIT	G	€276	51	€76	€122	€22	€4	224	14.2	11.4	26	+0.09	+0.06	5.3	-3.6	PED	1.8	Directive	CHQ
FR6541	(IG)ROSEMORE CLIPPER	G	€265	53	€106	€105	€21	€10	180	15.0	15.6	31	+0.14	+0.16	5.7	-2.8	PED	-0.2	Real McCoy	PBM
Team Average			€315		€97	€144	€18	€13	136	17.5	12.4	30	+0.21	+0.13	4.9	-4.3		-0.4		

EBI & TYPE TEAM

HIGH EBI WITH BETTER TYPE SCORE

Progressive Genetics Expected G1 Type Bulls January 2021

Jan 2021

Bull Details			EBI & Sub-Indexes						Production					Calv		Pedigree				
CODE	Name	Proof	EBI	Rel	Prod	Fert	Health	Maint	Milk	Fat	Prot	F+P	Fat	Prot	Calv	Gest	Ped	Type	Sire	
FR7011	(IG)COMMEEN PHIL SRM	G	€321	49	€118	€125	€15	€21	176	21.0	15.4	36	+0.24	+0.16	4.8	-4.3	*SRM	0.3	Albert	YAB
*281045	*Albert Son	G	€310	49	€134	€114	€17	€4	75	24.3	15.3	40	+0.37	+0.22	6.8	-5.2	*SRM	0.4	Albert	FR2079
*020967	*Albert Son	G	€309	51	€103	€137	€13	€9	205	20.0	13.7	34	+0.20	+0.11	7.0	-5.2	*PED	0.3	Albert	HMY
*261798	LAKEMARSH ALBERTO	G	€308	50	€124	€124	€13	-€6	67	25.3	13.2	39	+0.39	+0.29	6.3	-5.2	PED	0.5	Albert	YJB
FR6454	(IG)MONAMORE VESTA	G	€302	52	€100	€135	€13	€7	348	16.4	16.5	33	+0.05	+0.08	5.3	-4.3	PED	1.0	VH PRASER	LWR
FR6637	(IG)SKRAF GLITTER	G	€302	50	€91	€146	€2	€14	285	15.2	14.5	30	+0.07	+0.08	4.3	-3.9	PED	0.6	Pivotal	FR4020
*082593	*Supreme Son	G	€301	53	€99	€158	€13	€4	238	17.9	14.1	32	+0.14	+0.10	5.1	-3.0	*PED	0.8	Supreme	KOZ
FR6583	(IG)DILLWALSH MAGNA	G	€291	51	€91	€122	€5	€17	176	13.8	13.4	27	+0.12	+0.13	5.4	-5.2	PED	0.2	Ebony	FR4020
FR6421	(IG)ROULMREAGUE IBERNIA	G	€286	51	€70	€137	€17	€7	214	12.0	10.9	23	+0.06	+0.06	5.4	-5.2	PED	1.6	Directive	HMY
*633057	*Zoro Son	G	€280	52	€113	€97	€8	€14	219	15.2	17.1	32	+0.11	+0.16	6.9	-5.1	*SRM	0.3	Zoro	LWR
FR6451	(IG)RAGLAN OMEGA PROFIT	G	€276	51	€76	€122	€22	€4	224	14.2	11.4	26	+0.09	+0.06	5.3	-3.6	PED	1.8	Directive	CHQ
FR6442	(IG)ROULMREAGUE SELIM	G	€271	51	€101	€112	€11	€12	88	18.6	12.0	31	+0.26	+0.16	4.7	-3.2	PED	0.4	Virginia	HDJ
*441425	*Nerd Son	G	€266	49	€131	€81	€8	€9	509	22.2	22.2	44	+0.04	+0.08	5.6	-4.6	*PED	2.4	Nerd	FR2249
Team Average			€294		€104	€124	€12	€9	217	18.2	14.6	33	+0.16	+0.13				0.8		

- Book your pack today, bulls available subject to semen production
- Note G1 bulls have passed all lab quality tests but have no field fertility data yet so some caution required
 - Usage Max 10 straws per bull
 - Usage Max 15% of herds semen requirements
- *Codes pending, *Pedigree status to be confirmed, data not confirmed at time of printing

FR6781

(IG)GREENHILLS PETER PED



- Saxon x Velvet: EBI €302
- Dam pictured 3rd lactation, 4.09% Protein lifetime

*72204

*SAMIR SON SRM



- Samir x Norman: EBI €297
- Dam pictured 2nd lactation, 3.99% Protein lifetime

*574234

*THADY SON SRM



- Thady x Cuddy: EBI €321
- Dam pictured 2nd lact, 3.75% Protein lifetime

FR6451 (IG)RAGLAN OMEGA PROFIT PED



- Directive x CHQ: EBI €276
- Dam pictured 5th lactation, 3.87% Protein lifetime

FR6454

(IG)MONAMORE VESTA PED



- Praser x VG LWR x VG Roxymac x EX McCormick: EBI €302
- Grandam pictured 5th lact, Dam 3.94% Protein

FR6442

(IG)DROUMREAGUE SELIM PED



- Virginia x Harold EX: EBI €271
- Dam pictured 4th lactation, 4.28% Protein lifetime

PERCENTAGES TEAM

MAXIMIZING HEALTH SUB-INDEX

Progressive Genetics Expected G1 Health Bulls January 2021

Jan 2021

Bull Details			EBI & Sub-Indexes						Production					Calv		Pedigree				
CODE	Name	Proof	EBI	Rel	Prod	Fert	Health	Maint	Milk	Fat	Prot	F+P	Fat	Prot	Calv	Gest	Ped	Type	Sire	
FR6547	(G1)STAMULLEN LUNASA SRM	G	€349	52	€100	€152	€22	€24	14	16.2	11.4	28	+0.27	+0.19	4.9	-5.1	SRM	-1.6	Early	LHZ
FR7020	(G1)TOWNROCHE TURBO	G	€343	49	€116	€152	€10	€7	63	21.3	13.2	34	+0.33	+0.19	4.8	-5.2	PED	-0.7	Albert	FR2298
FR7023	(G1)COLNASDON DAWN	G	€331	49	€120	€143	€10	€1	175	18.4	16.7	35	+0.20	+0.18	5.2	-4.7	PED	-0.2	Albert	FR2233
*681051	RICHVALLÉ GRAJO	G	€331	48	€122	€134	€7	€12	81	18.6	15.4	34	+0.27	+0.22	4.3	-5.2	PED	-0.7	Albert	FR2298
*072414	*Albert Son	G	€329	49	€130	€143	€5	€9	19	22.5	14.5	37	+0.38	+0.24	5.0	-4.3	*PED	-0.1	Albert	FR2036
FR7014	(G1)DEANS GROVE SADIO SRM	G	€324	53	€84	€169	€13	€13	-48	13.8	8.8	23	+0.28	+0.18	4.3	-5.2	SRM	-0.9	Pivotal	YRY
*481443	*Seville Son	G	€321	52	€107	€144	€13	€15	42	15.4	13.3	29	+0.24	+0.21	6.0	-5.2	*PED	-0.5	Seville	BHZ
FR6954	(G1)GERRINSALLOW UNACK	G	€320	47	€107	€153	€3	€10	62	17.9	12.8	31	+0.27	+0.18	6.6	-5.2	PED	-0.4	Albert	FR4020
FR6589	(G1)SHRONBEG VEGO SRM	G	€320	46	€117	€143	€9	€1	104	19.2	14.8	34	+0.26	+0.19	5.2	-3.8	SRM	-0.4	Albert	FR2275
FR6517	(G1)SMALLACRE ZANZA SRM	G	€318	50	€96	€155	€22	€23	-81	19.9	8.0	28	+0.41	+0.19	4.8	-4.3	SRM	-0.3	Samir	FR2460
FR6646	(G1)KNOCKREAGH GATSBY SRM	G	€315	49	€127	€117	€4	€7	175	22.2	16.5	39	+0.26	+0.18	4.9	-5.2	SRM	-0.1	Albert	FR2053
FR6586	(G1)BEDFORDHILL TIPPLE	G	€313	50	€111	€137	€11	€9	63	19.6	12.8	32	+0.30	+0.18	5.7	-5.1	PED	-0.7	Albert	RPA
*541816	LAKECASTLE BARTON	G	€311	51	€103	€158	€7	€7	61	17.6	12.2	30	+0.26	+0.18	6.6	-4.0	PED	-0.1	Major	LHZ
*953623	*Seville Son	G	€311	48	€104	€148	€8	€2	-16	13.3	12.7	26	+0.24	+0.23	4.7	-5.2	*SRM	-0.7	Seville	FR2239
*281045	*Albert Son	G	€310	49	€134	€114	€17	€4	75	24.3	15.3	40	+0.37	+0.22	6.8	-5.2	*SRM	0.4	Albert	FR2079
*261798	LAKE MARSH ALBERTO	G	€308	50	€124	€124	€13	-€6	67	25.3	13.2	39	+0.39	+0.29	6.3	-5.2	PED	0.5	Albert	YJB
FR7002	(G1)HILLTOWN WIDGET SRM	G	€307	49	€130	€119	€4	€9	172	23.4	16.5	40	+0.28	+0.18	5.7	-4.9	SRM	-1.0	Albert	TFZ
FR6751	(G1)BLACKBUSH GORYTUS SRM	G	€304	55	€107	€120	€14	€12	98	16.8	13.8	31	+0.22	+0.18	4.6	-4.9	SRM	-1.0	Faithful	FR2131
FR6781	(G1)GREENHILLS PETER	G	€302	51	€96	€140	€19	€6	58	14.2	12.2	26	+0.21	+0.18	5.4	-4.2	PED	0.0	Saxon	AKC
FR6844	(G1)HILLTOWN FABLE SRM	G	€302	48	€90	€127	€9	€24	26	12.2	11.4	24	+0.19	+0.18	3.1	-5.2	SRM	-0.5	Ebony	PHC Son
FR6640	(G1)CAPPASOUTH VALET	G	€298	50	€116	€127	€9	€7	46	21.0	13.1	34	+0.33	+0.20	4.9	-3.0	PED	-0.5	Ronald	FR2249
*221346	*Diamond Nua Son	G	€298	52	€132	€129	€6	€8	195	22.1	17.6	40	+0.24	+0.19	6.4	-3.0	*SRM	-1.2	Diamond Nua	PBM
FR6853	(G1)KNOCKENRIGHT CHESSMAN	G	€293	49	€111	€107	€12	€21	32	18.8	12.7	32	+0.31	+0.20	5.0	-4.7	PED	-0.8	Dandyman	FR2297
*442890	*Samir Son	G	€285	48	€108	€120	€19	€22	-48	23.1	9.5	33	+0.44	+0.20	4.8	-2.5	*SRM	-2.0	Samir	Alfie Son
*391355	*Diamond Nua Son	G	€285	53	€124	€130	€12	€5	2	17.1	15.0	32	+0.30	+0.26	7.3	-3.1	*SRM	-0.5	Diamond Nua	GZY
*731689	*Ronald Son	G	€279	51	€125	€87	€5	€0	159	19.9	16.6	37	+0.23	+0.19	3.1	-3.9	*PED	-1.4	Ronald	FR2233
Team Average			€312		€113	€134	€11	€10	61	19.0	13.5	32	+0.29	+0.20				-0.6		

XBRED TEAM

EBI, SOLIDS, HO X JE (6-50% JE)

Progressive Genetics Expected G1 XBred Bulls January 2021

Jan 2021

Bull Details			EBI & Sub-Indexes						Production					Calv		Pedigree				
CODE	Name	Proof	EBI	Rel	Prod	Fert	Health	Maint	Milk	Fat	Prot	F+P	Fat	Prot	Calv	Gest	Ped	Type	Sire	
*061682	*Pivotal Son	G	€346	51	€117	€157	€9	€14	144	22.6	14.2	37	+0.29	+0.16	4.5	-4.3	XSR	-0.5	Pivotal	DBW
*613902	*Pivotal Son	G	€322	51	€116	€139	€13	€23	111	18.2	15.0	33	+0.24	+0.19	4.4	-4.7	XSR	-0.4	Pivotal	PKA
*011842	*Albert Son	G	€306	49	€128	€105	€18	€24	173	23.5	16.1	40	+0.28	+0.17	6.5	-4.7	*XSR	-0.4	Albert	PBM
*061728	*Pivotal Son	G	€304	52	€130	€97	€3	€12	139	24.5	15.6	40	+0.32	+0.19	4.3	-4.6	*XSR	-0.6	Pivotal	SOK
*621545	*Superstition Son	G	€289	53	€114	€119	€1	€31	18	22.3	11.7	34	+0.38	+0.19	5.4	-3.6	XSR	-0.2	Superstition	LWR
*162800	(G1)CLOHANE WHIZZ SRM	G	€286	50	€124	€107	€0	€26	94	19.5	15.6	35	+0.27	+0.21	4.3	-3.8	XSR	-0.7	Zoro	WWA
Team Average			€309		€121	€121	€7	€22	113	21.8	14.7	36	+0.30	+0.19	4.9	-4.3			-0.5	

- Bull Team selected for high EBI, and maximum Production SI
- Book your pack today, bulls available subject to semen production
- Note G1 bulls have passed all lab quality tests but have no field fertility data yet so some caution required
 - Usage Max 10 straws per bull
 - Usage Max 15% of herds semen requirements
- Availability of individual bulls subject to semen availability
- *Codes pending, *Pedigree status to be confirmed, data not confirmed at time of printing

FR6954 (IG)DERRINSALLOW UNACK PED



- Albert x Jack: EBI €320
- Dam pictured as heifer, 3.92% Protein

FR6646 (IG)KNOCKREAGH GATSBY SRM



- Albert x Maestro: EBI €315
- Dam pictured, 2nd lact 3.76% Protein

FR6781 (IG)GREENHILLS PETER PED



- Saxon x Velvet: EBI €302
- Dam pictured 3rd lactation, 4.09% Protein lifetime

FR6547 (IG)STAMULLEN LUNASA SRM



- Early x LHZ: EBI €349
- Dam pictured, 6th Lact 3.95% Protein lifetime

FR7026 (IG) RICHVALE GRAJO PED



- Albert X Ronaldo: EBI €331
- Dam pictured, 1st lact 3.78% Protein

FR4513 (IG) BALLYGOWN ALBERT PED



- Sire of many G1 Sires

Progressive Genetics Expected G1 Yield Bulls January 2021

Jan 2021 

Bull Details			EBI & Sub-Indexes					Production				Calv		Pedigree						
CODE	Name	Proof	EBI	Rel	Prod	Fert	Health	Maint	Milk	Fat	Prot	F+P	Fat	Prot	Calv	Gest	Ped	Type	Sire	
FR6649	(IG)KILFEACLE DANZIG	G	€352	53	€108	€175	€4	€12	293	17.1	16.8	34	+0.09	+0.11	4.5	-4.6	PED	-0.6	Pivotal	KOZ
FR6960	(IG)BALLINROE XAAR	G	€335	52	€102	€156	€10	€26	284	18.2	15.3	33	+0.12	+0.09	3.9	-5.2	PED	-0.6	Pivotal	PBM
*962697	PARKOUIV OSORNO	G	€326	51	€107	€136	€14	€15	390	17.9	17.9	36	+0.04	+0.08	4.5	-4.3	PED	-0.7	Pivotal	FR2234
FR6784	(IG)HARBHCHOLL MERLIN SRM	G	€322	51	€120	€137	€11	€9	277	23.6	16.4	40	+0.21	+0.12	6.1	-4.5	SRM	-0.2	Pivotal	SEW
*282874	SKEHANAGH SERGIO	G	€321	53	€113	€129	€17	€4	348	20.7	17.2	38	+0.12	+0.09	3.8	-4.6	PED	-0.4	Pivotal	KOZ
*380534	*Albert Son	G	€310	49	€119	€130	€4	€11	278	19.6	17.6	37	+0.15	+0.14	5.3	-4.3	*PED	-0.5	Albert	LWR
*681671	*Absolute Son	G	€306	56	€103	€135	€3	€15	260	16.0	15.9	32	+0.10	+0.12	4.9	-5.1	*PED	-0.5	Absolute	LWR
FR6454	(IG)MONMORE VESTA	G	€302	52	€100	€135	€13	€7	348	16.4	16.5	33	+0.05	+0.08	5.3	-4.3	PED	1.0	VH PRASER	LWR
FR6637	(IG)KEAF GLITTER	G	€302	50	€91	€146	€2	€14	285	15.2	14.5	30	+0.07	+0.08	4.3	-3.9	PED	0.6	Pivotal	FR4020
*531244	*Albert Son	G	€299	49	€121	€102	€13	€7	299	13.9	20.3	34	+0.04	+0.17	5.0	-5.0	*PED	-0.1	Albert	FR2233
*490983	LOCHINVER JODY	G	€299	51	€123	€108	€6	€4	266	21.5	17.5	39	+0.19	+0.14	4.2	-5.2	SRM	-1.3	Dart	FR2239
*433117	MYLAWN MERCURY SRM	G	€295	72	€116	€127	-€1	€9	345	21.5	17.4	39	+0.13	+0.09	5.3	-4.5	SRM	-0.5	Dell Boy	FR2053
FR6811	(IG)BRANDY ARIZONA SRM	G	€295	51	€104	€123	€12	€9	258	13.9	16.7	31	+0.06	+0.13	6.3	-5.0	SRM	-1.4	Andrew	RPA
*921032	*Pivotal Son	G	€289	50	€141	€101	€2	€11	340	26.1	19.9	46	+0.21	+0.14	5.1	-3.8	*SRM	-0.1	Pivotal	FR4020
*132025	*Pivotal Son	G	€288	52	€111	€114	€8	€13	311	22.3	15.8	38	+0.17	+0.09	4.3	-4.5	*PED	-1.2	Pivotal	AFD
*262023	BALLYGOWN GARRIE	G	€285	51	€114	€116	-€2	€5	374	19.0	18.4	37	+0.07	+0.09	5.3	-4.8	PED	-0.3	Pivotal	FR2249
*441425	*Nerd Son	G	€266	49	€131	€81	€8	€9	509	22.2	22.2	44	+0.04	+0.08	5.6	-4.6	*PED	2.4	Nerd	FR2249
Team Average			€305		€113	€127	€7	€11	322	19.1	17.4	37	+0.11	+0.11				-0.3		

- Bull Team selected for high EBI, and maximum Production SI
- Book your pack today, bulls available subject to semen production
- Note G1 bulls have passed all lab quality tests but have no field fertility data yet so some caution required
 - Usage Max 10 straws per bull
 - Usage Max 15% of herds semen requirements
- Availability of individual bulls subject to semen availability
- *Codes pending, *Pedigree status to be confirmed, data not confirmed at time of printing



- Faithful x Maestro: EBI €327
- Dam pictured, 1st lactation, 3.80% Protein



- Directive x HMY: EBI €286
- Dam pictured 5th lactation, 3.62% Protein lifetime



PARKDUV OSORNO PED



- Pivotal x Joseph: EBI €326
- Grandam pictured, EX PKK, 5th Lact 3.79% Protein Lifetime



FR6454 (IG)MONAMORE VESTA PED



- Praser x VG LWR x VG Roxymac x EX McCormick: EBI €302
- Grandam pictured 5th lact, Dam 3.94% Protein



FR6781 (IG)GREENHILLS PETER PED



- Saxon x Velvet: EBI €302
- Dam pictured 3rd lactation, 4.09% Protein lifetime



FR6547 (IG)STAMULLEN LUNASA SRM



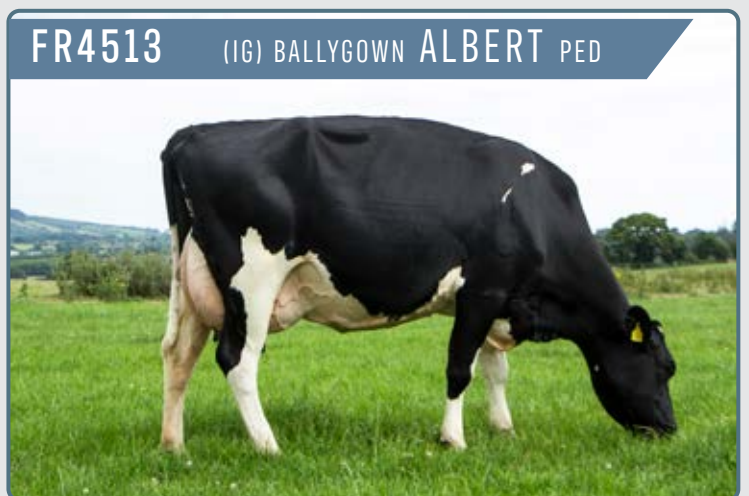
- Early x LHZ: EBI €349
- Dam pictured, 6th Lact 3.95% Protein lifetime



FR7026 (IG) RICHVALE GRAJO PED

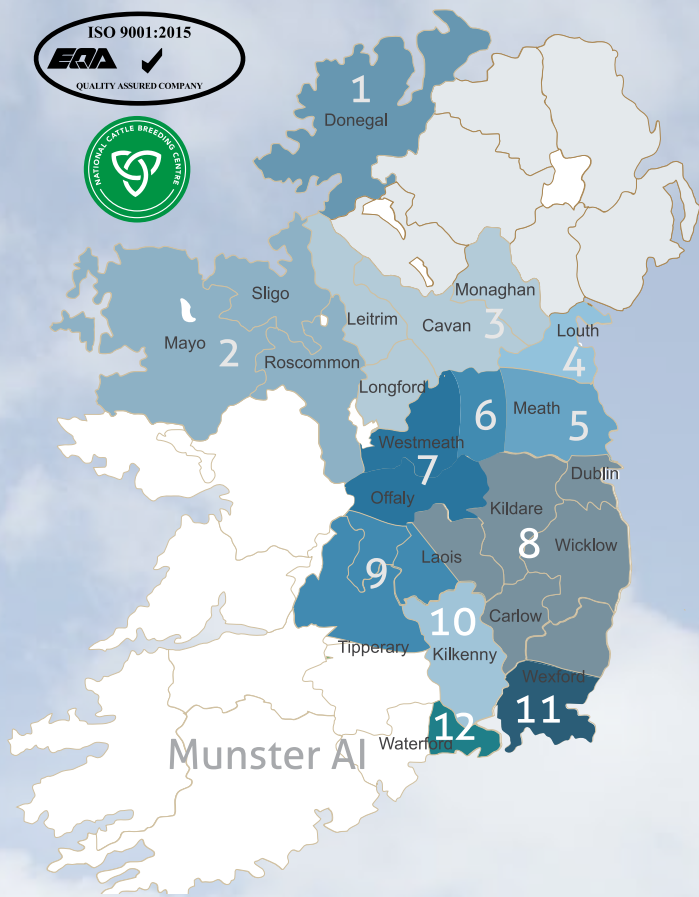


- Albert X Ronaldo: EBI €331
- Dam pictured, 1st lact 3.78% Protein



FR4513 (IG) BALLYGOWN ALBERT PED

- Sire of many G1 Sires



Munster AI

Breeding Advisor & Semen Sales



1. Gerard McCool
087 - 2057588
Donegal



2. John Griffith
086 - 8431624
Sligo, Mayo,
Roscommon



3. Deirdre Toal
087 - 2599314
Monaghan,
Longford, Cavan,
Leitrim



4. John McDaniel
087 - 2360318
Louth & Inniskeen
Area



5. Michael Quinn
086 - 3892908
East Meath, North
Dublin



6. Leo Davis
086 - 8197114
Kells Area &
Westmeath East



7. Violet Nevin
087 - 6253395
Westmeath,
North Offaly



8. Trevor Hanly
087 - 2272446
087 - 9148922
Carlow, Wicklow,
Kildare, E Laois,
Nth Wexford



9. Sean Hayes
087 - 2757835
Tipperary, West
Laois, South
Offaly



10. Denis Dalton
087 - 6785875
Kilkenny



10. Ger Power
086 - 2158505
Kilkenny



10. John Fogarty
087 - 6752401
Part of Tipperary &
Kilkenny



11. Eugene Kehoe
087 - 6842846
South Wexford



12. David Phelan
086 - 8959558
East Waterford



Seamus Hughes
Sales Manager
087 - 2331235



Shane Leane
Technical Sales
Manager
086 - 7514121



Stephen Connolly
Milk Recording
Manager
086 - 0318380
046 - 9540606

Milk Recording Contacts
Milk Recording Supervisor
Louise Knight 087-2505723
Milk Recording Office
Tel: 046-9540606



Call Centre: 046-9541230 or 1850 20 20 50
www.progressivegenetics.ie

Enfield Office
Rathcore, Enfield
Co. Meath A83 KP98
Tel: 046-9541230

