

BEEF
SUCKLER
CATALOGUE 2024

PROGRESSIVE

GENETICS



100% IRISH FARMER OWNED



Table of Contents

Page	Content	Page	Content	
4 & 5	Bull Tables	35	BB9553 Benevole	Pre-Order
	Limousin	35	BB9580 Verrati	Pre-Order
6	LM9379 Shannon Stan	35	IDB Ilot	Pre-Order
7	LM4217 Moondharrig Knell	36	BB5223 Nox De L'orgelot	
7	LM7416 Powerful Proper	36	BB8944 Octopus De Bierwa	
8	LM8259 Keltic Rembrandt	37	RWS Rosemount Cash Et	
9	LM8619 Castlevew Reece	37	S3750 Mambo	Pre-Order
10	LM8616 Lisna Sir	37	BB7383 Top Side Out There	
11	LM8625 Ardlea Rolex		Simmental	
12	LM8622 Ardlea Rigby Et	38	SI4350 Rubyjen Here's Johnny	
13	LM9836 Lisna Some Bull	39	SI7491 Leeherd Lynx 364	
14	LM9376 Keltic Superfurry Pp	40	SI2469 Lisnacraann Fifty Cent	
15	LM6280 O Mallet Pp	40	SI4250 Lis-Na-Ri Gucci	
15	LM9878 Greensons Testament PP	41	SI2152 Curaheen Earp	
16	LM3713 Nebbiolo	41	SI8520 Portroyal Mr Bull PP	
17	LM8715 Jaurel		Aubrac	
17	LM7428 Hector GD	42	AU4683 Turloughmore Magnificent	
	Charolais		Parthenaise	
18	CH6490 Orbi	42	PT4215 Leacan King	
19	CH8334 Corbaun Rory		Saler	
20	CH4251 Goldstar Ludwig	43	SA4604 Knottown Roy	
20	CH4321 Lapon	43	SA4060 Baron	Pre-Order
21	CH6493 Omega		Shorthorn	
22	CH8571 Recif	44	SH8532 Rylo Duncan (Rw)(H)	
23	CH8568 Rameau	44	SH5431 Finlough Finn (R)(P)	
24	CH8577 Sultan	45	SH6658 Napoleon Pp	Pre-Order
25	CH8580 Romarin Pp		Angus	
26	CH7503 Cloonradoon Ricky	46	AA8472 Tubridmore Twomey ET	
26	CH8262 Grangwood Royal Oak Et	47	AA6682 HW Lord Horatio V538	
27	CH6175 Neron Pp	48	AA5280 Coolrain Patriarch	
27	CH8112 Messmer	48	AA4087 Goulding Man Oh Man	
	Belgian Blue	49	AA9661 Knockmountagh Valentine	
28	BB9857 Eclairer De Roupage	49	AA9607 Shanaway Vengabus	
29	BB9854 Rollie Van De Steenakker	50	AA4089 Intelagri Matteo E.T.	
30	BB8947 Cachemire	50	AA7452 Te Mania Nebo	Pre-Order
31	BB9463 BBG Hong Wang		Hereford	
32	BB8941 Novateur Pp	51	HE9382 Gouldingpoll 1 Nijinsky PP	
33	BB4498 Delure De La Beole	52	HE4344 Allowdale Rambo 475	
33	BB7443 Newton De Fontena	53	HE9610 Midford 1 Whizzbang PP	
34	BB8950 Edison De Centfontaine	54	HE8511 Intelagri 1 Gold Rush Et Pp	

Choose the best sires for your herd

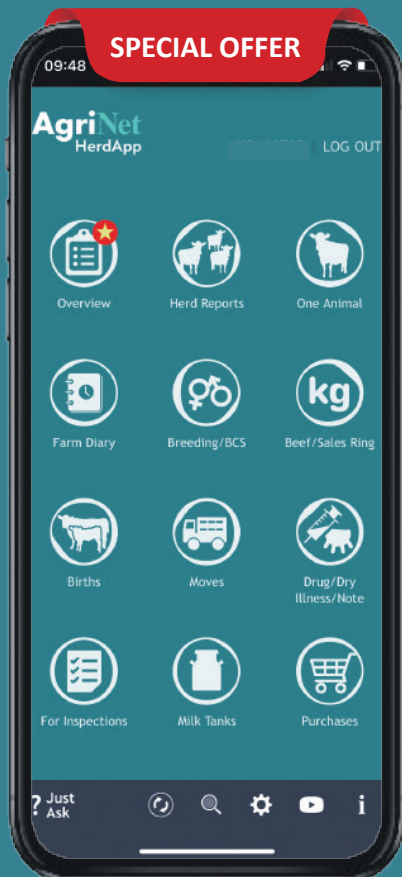
Note: Our technicians will store privately owned straws for breeders. While every care and precaution will be taken with privately owned straws, Progressive Genetics or our Technicians cannot be held responsible for any loss or damage to these straws.

Front Cover Image:
Nox daughter, bred by Martin
Calvey owned by Gabriel Sloyan



Your **No.1** Farm Management Tool

Everything for compliance, births, movements and remedies



AgriNet HerdApp gives you...

- ✓ 24/7 access to herd data
- ✓ AI & Breeding information
- ✓ Instant calf registrations
- ✓ Detailed animal reports
- ✓ All purchases, sales & deaths
- ✓ Fully Bord Bia Compliant

Our market leading software allows you to make the right management decisions for more profitable farming.

Free 30 day trial
with unlimited access
to all features.

"The best app at the best price."



Scan QR Code
for details



Email: herdapp@agrinet.ie

Call: 046 9249964

Progressive Genetics Active **Angus** Bulls Ranked by **DairyBeef Index**

Jan 2024 evaluation

Bull Details		Terminal Index			Replacement Index			DairyBeef Index			Calving				Beef Traits			Other traits	
Code	Name	Terminal Index	Ter-Rel	Ter within breed star	Replace't Index	Rel	within breed star	DBI Index	DBI Rel	DBI Within breed star	B heif Calving PTA	B heif Calv Rel	B cow Calving PTA	B cow Calv Rel	Gestation length (days)	Carcass weight (kg)	Carcass conformation	Daug Milk	Docility across breed
AA9607	SHANAWAY VENGABUS	€141	50	5	€154	49	5	€185	49	5	4.4	58	1.9	70	-2.34	19.9	0.74	6.90	2
AA4089	INTELAGRI MATTEO	€111	95	5	€225	93	5	€172	95	5	3.9	99	1.6	99	-3.62	9.6	0.79	7.00	3
AA8472	TUBRIDMORE TWOMEY	€67	56	3	€99	50	2	€148	64	5	3.1	59	1.5	70	-3.11	7.9	0.34	5.50	2
AA9661	KNOCKMOUNTAGH VALENTINE	€95	47	5	€151	44	5	€153	49	5	4.4	52	1.5	63	-2.51	13.1	0.77	8.30	3
AA6682	HW LORD HORATIO	€92	87	5	€97	63	2	€152	90	5	5.6	63	3.2	88	-2.48	12.8	0.91	6.70	3
AA7452	TE MANIA NEBO N424	€98	37	5	€154	35	5	€148	39	5	4.3	46	1.5	56	-3.21	9.5	0.65	8.70	4
AA5280	COOLRAIN PATRIARCH	€94	93	5	€208	77	5	€141	94	5	6.0	89	2.7	94	-1.80	8.6	0.66	5.90	4

Progressive Genetics Active **Hereford** Bulls Ranked by **DairyBeef Index**

Jan 2024 evaluation

Bull Details		Terminal Index			Replacement Index			DairyBeef Index			Calving				Beef Traits			Other traits	
Code	Name	Terminal Index	T Rel	Ter within breed star	Replace't Index	Rel	within breed star	DBI Index	DBI Rel	DBI Within breed star	Bheif Calving PTA	Bheif Calv Rel	Bcow Calving PTA	Bcow Calv Rel	Gestation length (days)	Carcass weight (kg)	Carcass conformation	Daug Milk	Docility across breed
HE9382	GOULDINGPOLL 1 NIJINSKY PP	€101	48	5	€103	47	4	€143	48	5	4.9	53	2.2	65	-1.35	12.0	0.73	6.10	5
HE8511	INTELAGRI 1 GOLD RUSH Pp	€96	52	5	€116	49	5	€133	58	5	8.0	54	5.1	67	-2.19	12.8	0.79	6.10	5
HE9610	MIDFORD 1 WHIZZBANG PP	€101	45	5	€156	42	5	€105	44	5	8.0	47	3.6	62	-1.50	12.0	0.56	7.10	5
HE4344	ALLOWDALE RAMBO 475	€58	92	3	€108	85	4	€70	92	2	9.4	86	4.0	96	-1.88	13.2	0.69	9.70	5

Progressive Genetics Active **Aubrac** Bulls

Jan 2024 evaluation

Bull Details		Terminal Index			Replacement Index			Calving				Beef Traits			Other traits	
Code	Name	Terminal Index	T Rel	Ter within breed star	Replace't Index	Rel	within breed star	Bheif Calving PTA	Bheif Calv Rel	Bcow Calving PTA	Bcow Calv Rel	Gestation length (days)	Carcass weight (kg)	Carcass Conformation	Daug Milk	Docility across breed
AU4683	TURLOUGHMORE MAGNIFICENT	€141	94	5	€252	85	5	6.3	97	2.8	98	0.64	18.6	1.79	2.90	5

Progressive Genetics Active **Belgian Blue** Bulls Ranked by **Terminal Index**

Jan 2024 evaluation

Bull Details		Terminal Index			Replacement Index			Calving				Beef Traits			Other traits	
Code	Name	Terminal Index	T Rel	Ter within breed star	Replace't Index	Rel	within breed star	Bheif Calving PTA	Bheif Calv Rel	Bcow Calving PTA	Bcow Calv Rel	Gestation length (days)	Carcass weight (kg)	Carcass Conformation	Daug Milk	Docility across breed
BB9857	ECLAIREUR DE ROUPAGE	€144	31	5	€28	32	3	18.5	44	9.3	56	2.34	37	3.12	5.6	5
S3750	MAMBO DES PEUPLIERS	€141	38	4	€63	36	5	14.7	43	7.8	57	0.74	35.8	2.65	5.8	5
BB8950	EDISON DE CENTFONTAINE	€137	40	4	€56	38	4	16.6	45	7.8	59	0.43	35.8	3.15	5.5	5
BB8944	OCTOPUS DE BIERWA	€134	38	4	€42	36	4	18.8	42	11.0	56	0.40	38.8	3.03	4.9	5
BB8941	NOVATEUR Pp	€131	37	4	€145	36	5	11.5	42	5.6	55	-0.62	29.1	2.62	5.3	5
BB7443	NEWTON DE FONTENA	€130	52	3	-€1	45	2	19.5	46	10.5	88	0.79	37.6	3.11	5.3	5
BB9463	BBG HONG WANG	€114	38	2	€83	36	5	14.5	42	6.9	56	-0.46	27.4	2.36	4.4	5
BB8947	CACHEMIRE DE DESSOUS LA VILLE	€114	36	2	€70	35	5	16.5	41	8.2	54	0.34	32.1	2.52	7.2	5
BB5223	NOX DE L'ORGELOT	€111	89	2	€58	73	5	20.8	70	12.9	98	1.20	31.9	3.06	3.4	5
BB9553	BENEVOLE DU BOUCHELET	€106	36	1	€64	35	5	15.4	40	8.0	56	0.09	29.5	2.51	5.1	5
BB4498	DELURE DE LA BEOLE	€100	86	1	€34	71	3	23.3	72	12.0	98	1.11	35	2.93	4.2	5
BB9854	ROLLIE VAN DE STEENAKKER	€94	3	1	€92	4	5	14.7	42	7.9	56	1.84	32	2.39	4.4	5
RWS	ROSEMOUNT CASH ET	€92	92	1	€31	94	3	21.0	86	10.8	99	0.47	26.2	2.85	5.7	5
BB9580	VERRATI DE COBREVILLE	€85	36	1	€60	35	5	17.1	41	9.1	53	0.22	25.3	2.21	6.7	5
IDB	ILOT DU BOUCHELET	€77	90	1	€37	94	4	26.8	88	12.2	99	0.82	24.4	2.73	4.4	5
BB7383	TOP SIDE OUT THERE Pp	€74	62	1	€39	51	4	17.0	51	12.1	92	-0.20	25.7	1.97	7.1	5

Progressive Genetics Active **Salers** Bulls Ranked by **Replacement Index**

Jan 2024 evaluation

Bull Details		Terminal Index			Replacement Index			Calving				Beef Traits			Other traits	
Code	Name	Terminal Index	T Rel	Ter within breed star	Replace't Index	Rel	within breed star	Bheif Calving PTA	Bheif Calv Rel	Bcow Calving PTA	Bcow Calv Rel	Gestation length (days)	Carcass weight (kg)	Carcass Conformation	Daug Milk	Docility across breed
SA4604	KNOTTOWN ROY	€98	95	5	€236	91	5	5.1	99	1.8	98	0.16	20.1	1.04	7.40	2
SA4060	BARON	€85	76	3	€127	73	1	5.7	72	3.5	92	0.67	20.9	1.00	8.40	1

Progressive Genetics Active **Parthenaise** Bulls

Jan 2024 evaluation

Bull Details		Terminal Index			Replacement Index			Calving				Beef Traits			Other traits	
Code	Name	Terminal Index	T Rel	Ter within breed star	Replace't Index	Rel	within breed star	Bheif Calving PTA	Bheif Calv Rel	Bcow Calving PTA	Bcow Calv Rel	Gestation length (days)	Carcass weight (kg)	Carcass Conformation	Daug Milk	Docility across breed
PT4215	LEACAN KING	€124	84	4	€134	75	4	7.5	81	4.0	92	0.89	27.2	2.27	-4.10	4

All bulls in this catalogue qualify under the AI requirement for the SCEP Scheme

(These bulls have been 4 or 5 star within or across breed in either Terminal or Replacement index in an evaluation from January 2021 to date.)

Progressive Genetics Active **Charolais** Bulls Ranked by **Terminal Index**

Jan 2024 evaluation

Bull Details		Terminal Index			Replacement Index			Calving				Beef Traits			Other traits	
Code	Name	Terminal Index	T Rel	Ter within breed star	Replace't Index	Rel	within breed star	Bheif Calving PTA	Bheif Calv Rel	Bcow Calving PTA	Bcow Calv Rel	Gestation length (days)	Carcass weight (kg)	Carcass Conformation	Daug Milk	Dociility across breed
CH8112	MESSMER	€174	68	5	€160	60	5	7.9	59	2.7	92	0.31	46.9	1.68	8.90	5
CH6493	OMEGA	€158	81	5	€131	61	5	12.2	59	6.9	96	2.67	38.0	2.24	4.30	2
CH4321	LAPON	€152	96	5	€64	88	3	9.0	97	4.9	99	2.11	42.2	2.26	-7.20	4
CH6175	NERON Pp	€150	78	5	€113	60	5	8.8	47	3.5	95	2.44	40.1	1.83	-1.00	3
CH4251	GOLDSTAR LUDWIG	€137	94	4	€99	91	4	11.7	89	7.0	99	2.07	43.5	1.84	-7.70	3
CH7503	CLOONRADOON RICKY	€134	71	4	€48	62	2	14.3	65	8.7	99	2.59	40.7	2.20	-3.80	3
CH8577	SULTAN	€130	42	3	€93	40	4	7.2	43	2.5	65	1.56	35.3	1.29	0.40	5
CH8580	ROMARIN Pp	€130	40	3	€140	37	5	7.1	39	2.7	65	2.37	31.4	1.49	-2.70	4
CH8571	RECIF	€129	44	3	€74	41	3	8.8	46	3.7	75	0.68	37.0	1.54	-0.60	4
CH6490	ORBI	€124	81	3	€53	61	2	8.3	72	4.1	99	2.67	36.8	1.99	-0.20	5
CH8568	RAMEAU	€109	41	2	€105	38	5	7.7	39	2.9	62	2.32	25.7	1.32	2.10	5
CH8334	CORBAUN RORY	€97	60	1	€48	56	2	17.6	59	11.3	95	1.18	39.2	1.92	3.50	5
CH8262	GRANGWOOD ROYAL OAK ET	€75	63	1	-€64	59	1	22.5	62	17.5	96	3.90	39.6	2.49	-7.60	5

Progressive Genetics Active **Limousin** Bulls Ranked by **Replacement Index**

Jan 2024 evaluation

Bull Details		Terminal Index			Replacement Index			Calving				Beef Traits			Other traits	
Code	Name	Terminal Index	T Rel	Ter within breed star	Replace't Index	Rel	within breed star	Bheif Calving PTA	Bheif Calv Rel	Bcow Calving PTA	Bcow Calv Rel	Gestation length (days)	Carcass weight (kg)	Carcass Conformation	Daug Milk	Dociility within breed
LM9379	SHANNON STAN	€166	50	5	€186	48	5	6.9	60	2.7	70	1.62	32.8	2.51	4.20	5
LM4217	MOONDHARRIG KNELL	€99	95	1	€179	95	5	9.2	99	4.4	99	2.88	20.9	2.00	-1.50	2
LM3713	NEBBIOLO	€164	85	5	€151	67	5	7.4	71	3.0	96	3.78	39.2	2.35	4.60	5
LM8715	JAUREL	€160	62	5	€143	54	5	8.2	53	3.5	90	2.42	36.2	2.39	8.50	2
LM8259	KELTIC REMBRANDT	€133	60	4	€136	55	5	8.4	66	3.6	92	1.32	27.5	2.26	1.00	5
LM8616	LISNA SIR	€135	50	4	€128	47	5	6.8	60	2.9	73	1.62	27.8	2.30	4.20	5
LM9836	LISNA SOME BULL	€116	49	3	€120	48	4	6.3	61	3.0	67	4.94	21.5	2.35	-1.70	4
LM6280	O MALLET PP	€105	86	2	€118	63	4	9.0	75	4.5	98	4.58	19.4	2.13	2.30	4
LM7428	HECTOR GD	€167	62	5	€103	54	3	9.6	51	5.5	93	2.93	33.6	2.88	4.90	5
LM8619	CASTLEVIEW REECE	€143	53	5	€116	51	4	7.5	61	4.0	75	4.99	32.4	2.37	4.40	5
LM9376	KELTIC SUPERFURRY Pp	€145	50	5	€112	47	4	7.2	58	2.8	68	1.62	30.9	2.13	-1.10	4
LM8622	ARDLEA RIGBY ET	€166	50	5	€109	48	3	9.6	57	4.3	74	4.00	38.9	2.52	0.80	5
LM7416	POWERFUL PROPER	€102	71	1	€99	64	3	6.2	96	3.4	98	2.05	19.6	2.15	5.00	4
LM9878	GREENSONS TESTAMENT PP	€138	37	5	€94	35	3	9.3	43	4.8	58	3.39	30.9	2.47	1.70	4
LM8625	ARDLEA ROLEX	€142	53	5	€86	49	2	8.0	59	3.7	85	2.69	25.6	2.39	-1.70	4

Progressive Genetics Active **Shorthorn** Bulls Ranked by **Replacement Index**

Jan 2024 evaluation

Bull Details		Terminal Index			Replacement Index			Calving				Beef Traits			Other traits	
Code	Name	Terminal Index	T Rel	Ter within breed star	Replace't Index	Rel	within breed star	Bheif Calving PTA	Bheif Calv Rel	Bcow Calving PTA	Bcow Calv Rel	Gestation length (days)	Carcass weight (kg)	Carcass Conformation	Daug Milk	Dociility across breed
SH5431	FINLOUGH FINN (R)(P)	€90	83	5	€166	74	5	8.2	76	2.8	91	-1.56	21.7	0.75	9.70	5
SH8532	RYLO DUNCAN (RO)(H)	€50	51	5	€125	49	3	7.0	61	2.4	71	1.85	11.1	0.72	9.70	4
SH6658	NAPOLÉON OF UPSALL (P)	€29	58	4	€79	48	1	8.9	81	4.3	91	0.73	10.2	0.42	9.30	5

Progressive Genetics Active **Simmental** Bulls Ranked by **Replacement Index**

Jan 2024 evaluation

Bull Details		Terminal Index			Replacement Index			Calving				Beef Traits			Other traits	
Code	Name	Terminal Index	T Rel	Ter within breed star	Replace't Index	Rel	within breed star	Bheif Calving PTA	Bheif Calv Rel	Bcow Calving PTA	Bcow Calv Rel	Gestation length (days)	Carcass weight (kg)	Carcass Conformation	Daug Milk	Dociility across breed
SI2152	CURAHEEN EARP	€86	96	4	€176	98	5	8.6	99	3.7	99	1.71	22.7	1.56	5.30	4
SI4350	RUBYJEN HERE'S JOHNNY	€97	86	5	€168	82	5	9.2	74	3.6	95	1.23	26.1	1.62	8.70	3
SI4250	LIS-NA-RI GUCCI	€70	94	3	€160	90	5	8.4	96	3.3	99	2.21	19.2	1.62	7.40	4
SI8520	PORTROYAL MR BULL PP	€81	48	4	€153	44	5	4.5	48	1.4	71	2.01	16.4	1.17	8.40	5
SI2469	LISNACRANN FIFTY CENT	€41	96	1	€153	97	5	9.1	99	3.7	99	0.49	14.3	0.98	8.40	5
SI7491	LEEHERD LYNX 364	€70	64	3	€84	57	2	10.4	81	4.8	96	3.38	24.6	1.52	9.50	3

All bulls in this catalogue qualify under the AI requirement for the SCEP Scheme

(These bulls have been 4 or 5 star within or across breed in either Terminal or Replacement index in an evaluation from January 2021 to date.)

DOB: 02/04/2021

Pedigree Status: PED

Myostatin: +/- (Non-Carrier), Profit gene: F94L/F94L(2 Copies)

Limousin



Bred by: Sarah McElligott, Asdee, Co. Kerry

Genotype included in Evaluation.

Star Rating (Within Breed)	Index ICBF, Nov'23 Genotype Incl.	€ Value	Rel	Star Rating (Across Breed)
★★★★★	Replacement Index	€186	48% (Average)	★★★★★
★★★★★	Terminal Index	€166	50% (Average)	★★★★★
★★★★★	DairyBeef Index	€161	48% (Average)	★★★★★
Expected Progeny Performance				
Calving Difficulty	Beef Heifers (% 3&4)	6.9%	60% (High)	0 Records
	Beef Cows (% 3&4)	2.7%	70% (High)	0 Records
★★★★★	Gestation Length (days)	1.62 days	61% (High)	★★★★★
★★★★★	Docity (Scale)	0.03	47% (Average)	★★★★★
★★★★★	Age at Finishing (days)	-0.88 days	64% (High)	★★★★★
★★★★★	Carcass Weight (Kg)	32.8 Kg	46% (Average)	★★★★★
★★★★★	Carcass Conf. (Scale 1-15)	2.51 Scale	45% (Average)	★★★★★
Expected Daughter Performance				
	Daughter calving diff (% 3&4)	5.03%	66% (High)	
★★★★★	Daughter milk (kg)	4.2	45% (Average)	★★★★★
★★★	Daughter calving interval (d)	2.33 days	38% (Low)	★★★



Shannon Stan, LM9379



Sire, Tomschoice Lexicon

- No. 1 LM available on Replacement Index, Top 1% on Terminal Index.
- Impeccably bred - Tomschoice Lexicon from an Edakkya dam.
- Stan himself is an excellent quality, correct, well-muscled bull with super temperament.

TOMSCHOICE LEXICON

KAPRICO ERAVELLE

TOMSCHOICE ICON

SHANNON NICOLA

EDAKKYA

SHANNON IRENE

Scan me for
latest figures!

MOONDHARRIG KNELL

Code: **LM4217**

DOB: 18/09/2015 Ped Status: PED

Myostatin: +/- (Non-Carrier), Profit gene: F94L/F94L(2 Copies)

CALVING EASE
EASY
AVERAGE
MATURE
COWS ONLY



Available Female Sexed



Bred by: Liam Walsh, Mooncoin, Co. Kilkenny.

Genotype included in Evaluation.

Star Rating (Within Breed)	ICBF, Nov '23 Genotype Incl.	€ Value	Rel	Star Rating (Across Breed)
★★★★★	Replacement Index	€179	95% (Very High)	★★★★★
★★★☆☆	Terminal Index	€99	95% (Very High)	★★★★★
★★★★☆	DairyBeef Index	€108	96% (Very High)	★★★★★

Expected Progeny Performance

Calving Difficulty	Beef Heifers (% 3&4)	9.2%	99% (Very High)	7114 Records
	Beef Cows (% 3&4)	4.4%	99% (Very High)	10936 Records
★★★★★	Gestation Length (days)	2.88 d	99% (Very High)	★★★★★
★★★★☆	Docility (Scale)	-0.07	99% (Very High)	★★★★★
★★★★☆	Age at Finishing (days)	5.51 d	99% (Very High)	★★★★★
★★★★☆	Carcass Weight (Kg)	20.9 Kg	99% (Very High)	★★★★★
★★★★☆	Carcass Conf (Scale 1 - 15)	2.00 Scale	99% (Very High)	★★★★★

Expected Daughter Performance

	Daughter calving diff (%)	3.13%	99% (Very High)	
★★★★☆	Daughter milk (kg)	-1.5 kg	98% (Very High)	★★★★★
★★★★★	Daughter calv interval (d)	-6.7 d	88% (Very High)	★★★★★

- No. 1 proven Limousin available on Replacement Index.
- A proven superior cow maker, daughters are very efficient milky cows with excellent calving ability and fertility.
- No. 1 bull available for Calving Interval.



Scan me for latest figures!



Knell daughter, Park and na Cru maiden heifer sale

BAVARDAGE
MOONDHARRIG FLORA
ON-DIT
RIDELLE
NIMBUS-MN
MOONDHARRIG LOTTO

POWERFUL PROPER

Code: **LM7416**

DOB: 01/07/2019 Ped Status: PED

Myostatin: +/- (Non-Carrier), Profit gene: F94L/F94L(2 Copies)

CALVING EASE
EASY
AVERAGE
MATURE
COWS ONLY



Bred by: Philip Crowe, Ballinagh, Co. Cavan.

Genotype included in Evaluation.

Star Rating (Within Breed)	ICBF, Nov '23 Genotype Incl.	€ Value	Rel	Star Rating (Across Breed)
★★★★☆	Replacement Index	€99	64% (High)	★★★★★
★★★☆☆	Terminal Index	€102	71% (High)	★★★★★
★★★★★	DairyBeef Index	€135	71% (High)	★★★★★

Expected Progeny Performance

Calving Difficulty	Beef Heifers (% 3&4)	6.2%	96% (Very High)	469 Records
	Beef Cows (% 3&4)	3.4%	98% (Very High)	1272 Records
★★★★★	Gestation Length (days)	2.05 d	99% (Very High)	★★★★★
★★★★★	Docility (Scale)	-0.04	97% (Very High)	★★★★★
★★★★☆	Age at Finishing (days)	2.73 d	67% (High)	★★★★★
★★★★☆	Carcass Weight (Kg)	19.6 Kg	70% (High)	★★★★★
★★★★☆	Carcass Conf (Scale 1 - 15)	2.15 Scale	59% (Average)	★★★★★

Expected Daughter Performance

	Daughter calving diff (%)	5.52%	97% (Very High)	
★★★★★	Daughter milk (kg)	5.0 kg	50% (Average)	★★★★★
★★★★☆	Daughter calv interval (d)	4.43 d	47% (Average)	★★★★★

- Proven easy calving bull suitable for pedigree and commercial maiden heifers.
- Short gestation - Top 2% of the LM breed.
- Progeny are well-muscled, correct and stylish.



Scan me for latest figures!



Proper son bred by Shane Kelly, Tuam

KAPRICO ERAVELLE
LISCARN EVE
WILODGE TONKA
KAPRICO RAVELLE
AMPERTAINE ABRACADABRA
LISCARN TARA

Available Female Sexed

Limousin



Bred by: Teleri Thomas & Mac Murphy, Enfield, Co. Meath

Genotype included in Evaluation.

Star Rating (Within Breed)	Index ICBF, Nov'23 <small>Genotype Incl.</small>	€ Value	Rel	Star Rating (Across Breed)
★★★★★	Replacement Index	€136	55% (Average)	★★★★★
★★★★★	Terminal Index	€133	60% (High)	★★★★★
★★★★★	DairyBeef Index	€137	57% (Average)	★★★★★
Expected Progeny Performance				
Calving Difficulty	Beef Heifers (% 3&4)	8.4%	66% (High)	7 Records
	Beef Cows (% 3&4)	3.6%	92% (Very)	108 Records
★★★★★	Gestation Length (days)	1.32 days	93% (Very)	★★★★★
★★★★★	Docility (Scale)	0.03	71% (High)	★★★★★
★★★★★	Age at Finishing (days)	1.28 days	64% (High)	★★★★★
★★★★★	Carcass Weight (kg)	27.5 Kg	56% (Average)	★★★★★
★★★★★	Carcass Conf. (Scale 1-15)	2.26 Scale	50% (Average)	★★★★★
Expected Daughter Performance				
★★★★★	Daughter calving diff (% 3&4)	4.57%	83% (Very)	★★★★★
★★★★★	Daughter milk (kg)	1.0	48% (Average)	★★★★★
★★★★★	Daughter calving interval (d)	0.55 days	41% (Average)	★★★★★

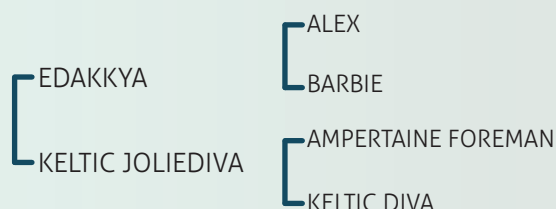


Rembrandt bull calf, bred by Lauren Beirne, Roscommon



Rembrandt bull calf bred by Teleri Thomas

- A complete bull, high in both Replacement & Terminal traits.
- Rembrandt's first calves are special; long, stylish and correct with good temperament.
- Rembrandt is a son of the renowned Edakkya from a super breeding cow.



Scan me for latest figures!



DOB: 22/10/2020

Pedigree Status: PED

Myostatin: NT821/+ (1 Copy), Profit gene: F94L/+ (1 Copy)



Limousin



Bred by: Sean O'Sullivan MRCVS, Castleisland, Co. Kerry

Genotype included in Evaluation.

Star Rating (Within Breed)	Index ICBF, Nov'23 <small>Genotype Incl.</small>	€ Value	Rel	Star Rating (Across Breed)
★★★★★	Replacement Index	€116	51% (Average)	★★★★★
★★★★★	Terminal Index	€143	53% (Average)	★★★★★
★★★★★	DairyBeef Index	€135	50% (Average)	★★★★★
Expected Progeny Performance				
Calving Difficulty	Beef Heifers (% 3&4)	7.5%	61% (High)	0 Records
	Beef Cows (% 3&4)	4.0%	75% (High)	3 Records
★★★★★	Gestation Length (days)	4.99 days	46% (Average)	★★★★★
★★★★★	Docility (Scale)	0.02	58% (Average)	★★★★★
★★★★★	Age at Finishing (days)	0.51 days	65% (High)	★★★★★
★★★★★	Carcass Weight (Kg)	32.4 Kg	53% (Average)	★★★★★
★★★★★	Carcass Conf. (Scale 1-15)	2.37 Scale	48% (Average)	★★★★★
Expected Daughter Performance				
★★★★★	Daughter calving diff (% 3&4)	3.97%	70% (High)	★★★★★
★★★★★	Daughter milk (Kg)	4.4	49% (Average)	★★★★★
★★★★★	Daughter calving interval (d)	4.31 days	41% (Average)	★★★★★

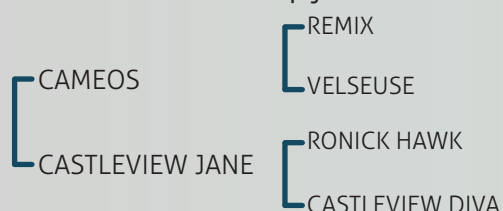


Castleview Reece calf bred by Padraig Gallagher



Castleview Reece LM8619

- Huge farmer satisfaction with Reece's first calves.
- He has matured into an exceptional heavily-muscled bull with super temperament.
- Very high Muscle Score of 137; top 3% of the Limousin breed.
- He carries one copy of nt821 which will bring extra shape.



Scan me for
latest figures!



DOB:01/01/2021

Pedigree Status: PED

Myostatin: +/+ (Non-Carrier), Profit gene: F94L/F94L(2 Copies)

Limousin



Bred by: Dermot Shaughnessy, Ballinasloe, Co. Galway

Genotype included in Evaluation.

Star Rating (Within Breed)	Index ICBF, Nov '23 Genotype Incl.	€ Value	Rel	Star Rating (Across Breed)
★★★★★★	Replacement Index	€128	47% (Average)	★★★★★★
★★★★★	Terminal Index	€135	50% (Average)	★★★★★★
★★★★★★	DairyBeef Index	€141	48% (Average)	★★★★★★
Expected Progeny Performance				
Calving Difficulty	Beef Heifers (% 3&4)	6.8%	60% (High)	0 Records
	Beef Cows (% 3&4)	2.9%	73% (High)	9 Records
★★★★★★	Gestation Length (days)	1.62 days	61% (High)	★★★★★
★★★★★★	Dolcility (Scale)	0.05	47% (Average)	★★★★★
★★★☆☆	Age at Finishing (days)	2.66 days	64% (High)	★★★☆☆
★★★★★★	Carcass Weight (Kg)	27.8 Kg	45% (Average)	★★★★★★
★★★★★★	Carcass Conf. (Scale 1-15)	2.30 Scale	46% (Average)	★★★★★★
Expected Daughter Performance				
	Daughter calving diff (% 3&4)	4.60%	69% (High)	
★★★★★★	Daughter milk (Kg)	4.2	44% (Average)	★★★★★
★★★☆☆	Daughter calving interval (d)	3.40 days	39% (Low)	★★★☆☆



Lisna Sir bull calf



Lisna Sir bull calf

- An exceptional bull with muscle and power.
- Sired by the renowned Tomschoice Lexicon from a big On Dit daughter; one of the best cows in the Lisna herd.
- Complete bull, high in both Terminal and Replacement traits.



Scan me for
latest figures!



Available Female Sexed



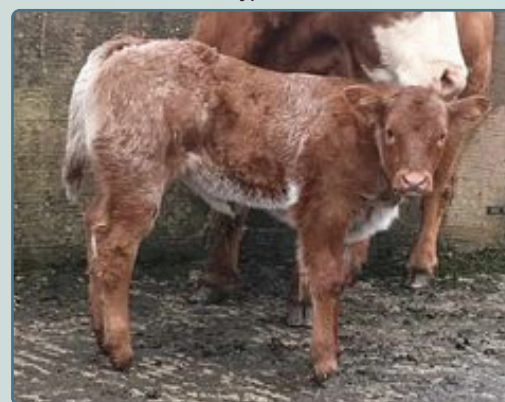
Limousin



Bred by: Daniel Tynan, Mountrath, Co. Laois

Genotype included in Evaluation.

Star Rating (Within Breed)	Index ICBF, Nov'23 Genotype Incl.	€ Value	Rel	Star Rating (Across Breed)
★★★★★	Replacement Index	€86	49% (Average)	★★★★★
★★★★★	Terminal Index	€142	53% (Average)	★★★★★
★★★★★	DairyBeef Index	€134	50% (Average)	★★★★★
Expected Progeny Performance				
Calving Difficulty	Beef Heifers (% 3&4)	8.0%	59% (Average)	3 Records
	Beef Cows (% 3&4)	3.7%	85% (Very)	46 Records
★★★★★	Gestation Length (days)	2.69 days	82% (Very)	★★★★★
★★★★★	Docility (Scale)	-0.02	47% (Average)	★★★★★
★★★★★	Age at Finishing (days)	1.94 days	61% (High)	★★★★★
★★★★★	Carcass Weight (Kg)	25.6 Kg	47% (Average)	★★★★★
★★★★★	Carcass Conf. (Scale 1-15)	2.39 Scale	45% (Average)	★★★★★
Expected Daughter Performance				
	Daughter calving diff (% 3&4)	5.67%	80% (Very)	
★★★★★	Daughter milk (kg)	-1.7	42% (Average)	★★★★★
★★★★★	Daughter calving interval (d)	2.04 days	39% (Low)	★★★★★



Rolex heifer bred by John Francis Barret



Rolex calf bred by John McDaniel

- Rolex's first calves are excellent quality with super muscle development.
- He is bred to produce super weanlings with extra shape; he is a son of Telfers Munster from a proven Vison dam.
- Rolex is a super looking, well-muscled, correct, classy bull with great temperament.



Scan me for
latest figures!



Available Female Sexed

Limousin



Bred by: Daniel Tynan, Mountrath, Co. Laois

Genotype included in Evaluation.

Star Rating (Within Breed)	Index ICBF, Nov'23 Genotype Incl.	€ Value	Rel	Star Rating (Across Breed)
★★★★★	Replacement Index	€109	48% (Average)	★★★★★
★★★★★	Terminal Index	€166	50% (Average)	★★★★★
★★★★★	DairyBeef Index	€110	48% (Average)	★★★★★
Expected Progeny Performance				
Calving Difficulty	Beef Heifers (% 3&4)	9.6%	57% (Average)	0 Records
	Beef Cows (% 3&4)	4.3%	74% (High)	9 Records
★★★★★	Gestation Length (days)	4.00 days	62% (High)	★★★★★
★★★★★	Docity (Scale)	0.03	47% (Average)	★★★★★
★★★★★	Age at Finishing (days)	-1.86 days	61% (High)	★★★★★
★★★★★	Carcass Weight (kg)	38.9 Kg	47% (Average)	★★★★★
★★★★★	Carcass Conf. (Scale 1-15)	2.52 Scale	46% (Average)	★★★★★
Expected Daughter Performance				
	Daughter calving diff (% 3&4)	4.83%	70% (High)	
★★★★★	Daughter milk (kg)	0.8	42% (Average)	★★★★★
★★★★★	Daughter calving interval (d)	2.91 days	38% (Low)	★★★★★



Ardlea Rigby, LM8622



Sire, Derrygullinane Kingbull

- An outstanding Derrygullinane Kingbull son.
- Top 3% of the Limousin breed on Terminal Index.
- Top 1% across breed for Carcass Weight and Conformation, non-carrier for myostatin.



Scan me for latest figures!



LISNA SOME BULL

Code: LM9836



DOB: 29/11/2021

Pedigree Status: PED

Myostatin: Q204X/+ (1 Copy), Profit gene: F94L/+ (1 Copy)



Limousin



Bred by: Dermot Shaughnessy, Ballinasloe, Co. Galway

Genotype included in Evaluation.

Star Rating (Within Breed)	Index ICBF, Nov'23 Genotype Incl.	€ Value	Rel	Star Rating (Across Breed)
★★★★★	Replacement Index	€120	48% (Average)	★★★★★
★★★★★	Terminal Index	€116	49% (Average)	★★★★★
★★★★★	DairyBeef Index	€119	47% (Average)	★★★★★

Expected Progeny Performance

Calving Difficulty	Beef Heifers (% 3&4)	6.3%	61% (High)	0 Records
	Beef Cows (% 3&4)	3.0%	67% (High)	0 Records
★★★★★	Gestation Length (days)	4.94 days	46% (Average)	★★★★★
★★★★★	Docility (Scale)	-0.02	47% (Average)	★★★★★
★★★★★	Age at Finishing (days)	1.27 days	66% (High)	★★★★★
★★★★★	Carcass Weight (Kg)	21.5 Kg	46% (Average)	★★★★★
★★★★★	Carcass Conf. (Scale 1-15)	2.35 Scale	46% (Average)	★★★★★

Expected Daughter Performance

	Daughter calving diff (% 3&4)	4.54%	64% (High)	
★★★★★	Daughter milk (kg)	-1.7	46% (Average)	★★★★★
★★★★★	Daughter calving interval (d)	-0.24 days	41% (Average)	★★★★★

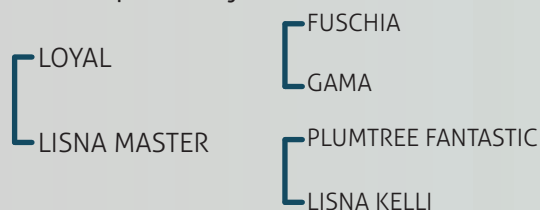
- Some Bull was selected for his exceptional muscle development and correctness.
- He is bred to produce exceptional weanlings and show champions
- A carrier of the double muscle gene Q204x
- His dam, a Plumtree Fantastic cow, is a consistent breeder of shape & style.



Lisna Some Bull LM9836



Sire, Loyal LM4814



Scan me for latest figures!



KELTIC SUPERFURRY Pp

Code: LM9376

DOB: 22/04/2021

Pedigree Status: PED

Myostatin: +/- (Non-Carrier), Profit gene: F94L/F94L (2 Copies)



Limousin



Bred by: Teleri Thomas & Mac Murphy, Enfield, Co. Meath

Genotype included in Evaluation.

Star Rating (Within Breed)	Index ICBF, Nov'23 Genotype Incl.	€ Value	Rel	Star Rating (Across Breed)
★★★★★	Replacement Index	€112	47% (Average)	★★★★★
★★★★★	Terminal Index	€145	50% (Average)	★★★★★
★★★★★	DairyBeef Index	€139	48% (Average)	★★★★★
Expected Progeny Performance				
Calving Difficulty	Beef Heifers (% 3&4)	7.2%	58% (Average)	0 Records
	Beef Cows (% 3&4)	2.8%	68% (High)	1 Records
★★★★★	Gestation Length (days)	1.62 days	59% (Average)	★★★★★
★★★★★	Docility (Scale)	-0.04	63% (High)	★★★★★
★★★★★	Age at Finishing (days)	2.72 days	61% (High)	★★★★★
★★★★★	Carcass Weight (Kg)	30.9 Kg	49% (Average)	★★★★★
★★★★★	Carcass Conf. (Scale 1-15)	2.13 Scale	45% (Average)	★★★★★
Expected Daughter Performance				
	Daughter calving diff (% 3&4)	3.02%	64% (High)	
★★★★★	Daughter milk (Kg)	-1.1	44% (Average)	★★★★★
★★★★★	Daughter calving interval (d)	1.38 days	37% (Low)	★★★★★

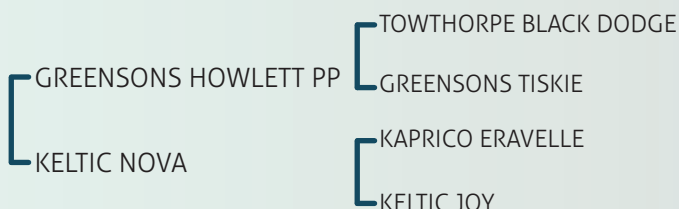


Keltic Superfurry, LM9376



Kaprico Eravelle, MGS

- Superfurry Pp was selected for calving ease, short gestation and overall quality.
- Three generations of easy calving, short gestation sires - Howlett PP X Eravelle X Commander.
- Heterozygous polled 50% of progeny will be polled (no horns).



Scan me for latest figures!



O Mallet PP

Code: **LM6280**

DOB: 11/03/2018 Ped Status: PED

Myostatin: +/- (Non-Carrier), Profit gene: F94L/F94L(2 Copies)



Bred by: CHATEAU PIQUE SEQUE, France.

Genotype included in Evaluation.

Star Rating (Within Breed)	ICBF, Nov '23 Genotype Incl.	€ Value	Rel	Star Rating (Across Breed)
★★★★★	Replacement Index	€118	63% (High)	★★★★★
★★★★★	Terminal Index	€105	86% (Very High)	★★★★★
★★★★★	DairyBeef Index	€103	84% (Very High)	★★★★★

Expected Progeny Performance

Calving Difficulty	Beef Heifers (% 3&4)	9%	75% (High)	47 Records
	Beef Cows (% 3&4)	4.5%	98% (Very High)	719 Records
★★★★★	Gestation Length (days)	4.58 d	98% (Very High)	★★★★★
★★★★★	Dolality (Scale)	-0.03	95% (Very High)	★★★★★
★★★★★	Age at Finishing (days)	0.37 d	79% (High)	★★★★★
★★★★★	Carcass Weight (Kg)	19.4 Kg	91% (Very High)	★★★★★
★★★★★	Carcass Conf (Scale 1 - 15)	2.13 Scale	88% (Very High)	★★★★★

Expected Daughter Performance

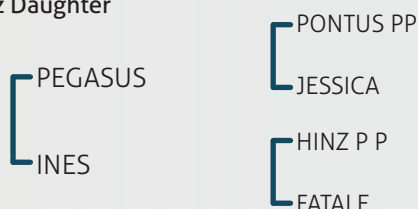
	Daughter calving diff (%)	4.69%	93% (Very High)	★★★★★
★★★★★	Daughter milk (kg)	2.3 kg	34% (Low)	★★★★★
★★★★★	Daughter calv interval (d)	-0.81 d	40% (Average)	★★★★★

- O' Mallet PP is one of the best homozygous polled Limousin bulls available.
- He is used with huge satisfaction across Europe.
- Progeny are long, correct and stylish with excellent pelvic areas and docility.



Hinz Daughter

Scan me for latest figures!



GREENSONS TESTAMENT PP

Code: **LM9878**

DOB: 08/02/2022 Ped Status: PED

Myostatin: NT821/+ (1 Copy), Profit gene: F94L/+ (1 Copy)



Bred by: Guy Greene, UK.

Genotype included in Evaluation.

Star Rating (Within Breed)	ICBF, Nov '23 Genotype Incl.	€ Value	Rel	Star Rating (Across Breed)
★★★★★	Replacement Index	€94	35% (Low)	★★★★★
★★★★★	Terminal Index	€138	37% (Low)	★★★★★
★★★★★	DairyBeef Index	€121	34% (Low)	★★★★★

Expected Progeny Performance

Calving Difficulty	Beef Heifers (% 3&4)	9.3%	43% (Average)	0 Records
	Beef Cows (% 3&4)	4.8%	58% (Average)	0 Records
★★★★★	Gestation Length (days)	3.39 d	32% (Low)	★★★★★
★★★★★	Dolality (Scale)	-0.01	32% (Low)	★★★★★
★★★★★	Age at Finishing (days)	6.87 d	53% (Average)	★★★★★
★★★★★	Carcass Weight (Kg)	30.9 Kg	32% (Low)	★★★★★
★★★★★	Carcass Conf (Scale 1 - 15)	2.47 Scale	32% (Low)	★★★★★

Expected Daughter Performance

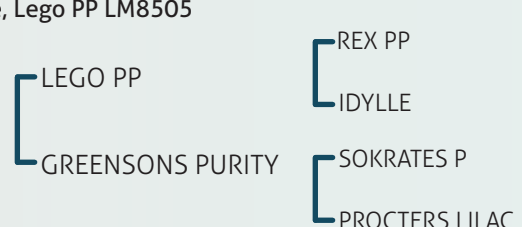
	Daughter calving diff (%)	5.52%	54% (Average)	
★★★★★	Daughter milk (kg)	1.70 kg	32% (Low)	★★★★★
★★★★★	Daughter calv interval (d)	2.70 d	31% (Low)	★★★★★

- An outstanding homozygous polled bull.
- Testament comes from a super cow family, Procters Lilac.
- He has tremendous width, shape & temperament.



Sire, Lego PP LM8505

Scan me for latest figures!





WEANLING



REPLACEMENT



FINISHING

CALVING EASE

☐ EASY
☒ AVERAGE
☐ MATURE COWS ONLY

Pre-Order

Limousin



Bred by: GAEC DESSEAUVE N ET R, France

Genotype included in Evaluation.

Star Rating (Within Breed)	Index ICBF, Nov'23 <small>Genotype Incl.</small>	€ Value	Rel	Star Rating (Across Breed)
★★★★★	Replacement Index	€151	67% (High)	★★★★★
★★★★★	Terminal Index	€164	85% (Very)	★★★★★
★★★★★	DairyBeef Index	€145	79% (High)	★★★★★
Expected Progeny Performance				
Calving Difficulty	Beef Heifers (% 3&4)	7.4%	71% (High)	11 Records
	Beef Cows (% 3&4)	3.0%	96% (Very)	151 Records
★★★★★	Gestation Length (days)	3.78 days	93% (Very)	★★★★★
★★★★★	Docility (Scale)	0.02	90% (Very)	★★★★★
★★★★★	Age at Finishing (days)	-4.38 days	83% (Very)	★★★★★
★★★★★	Carcass Weight (Kg)	39.2 Kg	86% (Very)	★★★★★
★★★★★	Carcass Conf. (Scale 1-15)	2.35 Scale	82% (Very)	★★★★★
Expected Daughter Performance				
	Daughter calving diff (% 3&4)	6.70%	89% (Very)	
★★★★★	Daughter milk (kg)	4.6	54% (Average)	★★★★★
★★★★★	Daughter calving interval (d)	1.63 days	44% (Average)	★★★★★

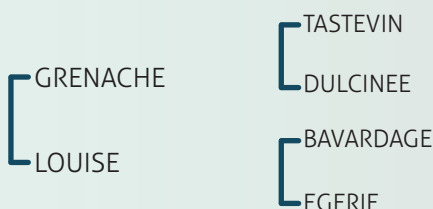


Nebbiolo daughter in Tully Performance Test



Nebbiolo daughter in Tully Performance Test

- The full package - Replacement, Terminal & Docility.
- Nebbiolo daughters performed exceptionally well in Moussours for milk, fertility and calving ability.
- Progeny have excellent weight for age and shape, their performance in Tully was excellent.

Scan me for
latest figures!

JAUREL

Code: **LM8715**

DOB: 15/09/2014 Ped Status: PED

Myostatin: +/- (Non-Carrier), Profit gene: F94L/F94L(2 Copies)



CALVING EASE
EASY
AVERAGE
MATURE COWS ONLY

Pre-Order



Jaurel daughter

Bred by: GAEC DU BREUIL ST MAURICE, France.

Genotype included in Evaluation.

Star Rating (Within Breed)	ICBF, Nov '23 Genotype Incl.	€ Value	Rel	Star Rating (Across Breed)
★★★★★	Replacement Index	€143	54% (Average)	★★★★★
★★★★★	Terminal Index	€160	62% (High)	★★★★★
★★★★★	DairyBeef Index	€137	55% (Average)	★★★★★

Expected Progeny Performance

Calving Difficulty	Beef Heifers (% 3&4)	8.2%	53% (Average)	0 Records
	Beef Cows (% 3&4)	3.5%	90% (Very High)	5 Records
★★★★★	Gestation Length (days)	2.42 d	58% (Average)	★★★★★
★★★★★	Docility (Scale)	-0.07	42% (Average)	★★★★★
★★★★★	Age at Finishing (days)	-0.97 d	60% (High)	★★★★★
★★★★★	Carcass Weight (Kg)	36.2 Kg	66% (High)	★★★★★
★★★★★	Carcass Conf (Scale 1 - 15)	2.39 Scale	64% (High)	★★★★★

Expected Daughter Performance

	Daughter calving diff (%)	4.76%	83% (Very High)	
★★★★★	Daughter milk (kg)	8.5 kg	57% (Average)	★★★★★
★★★★★	Daughter calv interval (d)	1.48 d	37% (Low)	★★★★★

- One of the highest index LM bulls available for both Replacement & Terminal Index.
- Progeny are average in size, well-muscled and have great thickness through the body.
- Easy calving, suitable for second calvers.



Jaurel daughter

Scan me for latest figures!



HECTOR GD

Code: **LM7428**

DOB: 20/11/2012 Ped Status: PED

Myostatin: +/- (Non-Carrier), Profit gene: F94L/F94L(2 Copies)



CALVING EASE
EASY
AVERAGE
MATURE COWS ONLY

Pre-Order



Limousin

Bred by: Anthony Guillot_Patureau, France.

Genotype included in Evaluation.

Star Rating (Within Breed)	ICBF, Nov '23 Genotype Incl.	€ Value	Rel	Star Rating (Across Breed)
★★★★★	Replacement Index	€103	54% (Average)	★★★★★
★★★★★	Terminal Index	€167	62% (High)	★★★★★
★★★★★	DairyBeef Index	€158	57% (Average)	★★★★★

Expected Progeny Performance

Calving Difficulty	Beef Heifers (% 3&4)	9.6%	51% (Average)	2 Records
	Beef Cows (% 3&4)	5.5%	93% (Very High)	40 Records
★★★★★	Gestation Length (days)	2.93 d	84% (Very High)	★★★★★
★★★★★	Docility (Scale)	0.02	62% (High)	★★★★★
★★★★★	Age at Finishing (days)	3.37 d	56% (Average)	★★★★★
★★★★★	Carcass Weight (Kg)	33.6 Kg	64% (High)	★★★★★
★★★★★	Carcass Conf (Scale 1 - 15)	2.88 Scale	60% (High)	★★★★★

Expected Daughter Performance

	Daughter calving diff (%)	5.3%	82% (Very High)	
★★★★★	Daughter milk (kg)	4.9 kg	58% (Average)	★★★★★
★★★★★	Daughter calv interval (d)	3.52 d	36% (Low)	★★★★★

- Top 1% of the LM breed on Terminal Index.
- Use Hector to breed maximum shape; No. 2 LM bull available on carcass conformation.
- Works best on tall cows, he will add the shape.



Hector GD calf, bred by Philip Crowe, Cavan

Scan me for latest figures!



CHATELAIN
COPINE

ON-DIT
URANE
SAFARA
UTILE

CHARMEUR
CALINETTE

SAUVIGNON
ULNA
VIRAGE
ULTRABELLE



WEANLING



FINISHING

PEDIGREE
ROYALTY

CALVING EASE

☒ EASY
☐ AVERAGE
☐ MATURE
 COWS ONLY

Charolais



Bred by: Michel Bouchot, France

Genotype included in Evaluation.

Star Rating (Within Breed)	Index ICBF, Nov'23 Genotype Incl.	€ Value	Rel	Star Rating (Across Breed)
★★★★★	Replacement Index	€53	61% (High)	★★★★★
★★★★★	Terminal Index	€124	81% (Very)	★★★★★
★★★★★	DairyBeef Index	€124	79% (High)	★★★★★

Expected Progeny Performance

Calving Difficulty	Beef Heifers (% 3&4)	8.3%	72% (High)	38 Records
	Beef Cows (% 3&4)	4.1%	99% (Very)	1560 Records
★★★★★	Gestation Length (days)	2.67 days	99% (Very)	★★★★★
★★★★★	Dolcility (Scale)	0.09	98% (Very)	★★★★★
★★★★★	Age at Finishing (days)	3.64 days	81% (Very)	★★★★★
★★★★★	Carcass Weight (Kg)	36.8 Kg	87% (Very)	★★★★★
★★★★★	Carcass Conf. (Scale 1-15)	1.99 Scale	83% (Very)	★★★★★

Expected Daughter Performance

	Daughter calving diff (% 3&4)	5.27%	94% (Very)	
★★★★★	Daughter milk (Kg)	-0.2	40% (Average)	★★★★★
★★★★★	Daughter calving interval (d)	-1.82 days	39% (Low)	★★★★★

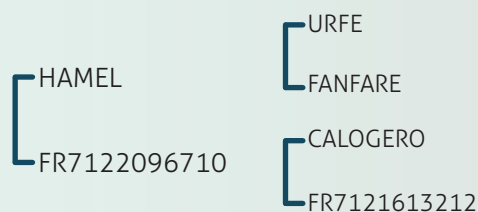


Orbi daughter Aghafad Tessa, Senior Female Calf Champion, Tullamore Show 23



Orbi daughter Loughill Teagan, Jim O'Donnell selling for €4,500

- Orbi is one of the easiest calving Charolais bulls available. He is suitable for pedigree maidens.
- Pedigree and commercial progeny have excellent shape, weight for age and style.
- Use to breed superior quality weanlings.



Scan me for
latest figures!



CORBAUN RORY

Code: CH8334

DOB:12/06/2020 Pedigree Status: PED
Myostatin: Q204X/+ (1 Copy), Profit gene: F94L/+ (1 Copy)



CALVING EASE
EASY
AVERAGE
MATURE COWS ONLY



Charolais



Bred by: Liam Keogh, Dring, Co. Longford

Genotype included in Evaluation.

Star Rating (Within Breed)	Index ICBF, Nov'23 Genotype Incl.	€ Value	Rel	Star Rating (Across Breed)
★★★★★	Replacement Index	€48	56% (Average)	★★★★★
★★★★★	Terminal Index	€97	60% (High)	★★★★★
★★★★★	DairyBeef Index	€61	56% (Average)	★★★★★
Expected Progeny Performance				
Calving Difficulty	Beef Heifers (% 3&4)	17.6%	59% (Average)	1 Records
	Beef Cows (% 3&4)	11.3%	95% (Very)	224 Records
★★★★★	Gestation Length (days)	1.18 days	93% (Very)	★★★★★
★★★★★	Docility (Scale)	0.11	73% (High)	★★★★★
★★★★★	Age at Finishing (days)	0.26 days	65% (High)	★★★★★
★★★★★	Carcass Weight (Kg)	39.2 Kg	55% (Average)	★★★★★
★★★★★	Carcass Conf. (Scale 1-15)	1.92 Scale	49% (Average)	★★★★★
Expected Daughter Performance				
	Daughter calving diff (% 3&4)	4.50%	87% (Very)	
★★★★★	Daughter milk (Kg)	3.5	46% (Average)	★★★★★
★★★★★	Daughter calving interval (d)	-0.56 days	46% (Average)	★★★★★



Corbaun Rory



Corbaun Rory calf, Michael Kennedy

- Huge satisfaction with Rory's first calves.
- They are long, powerful, wide cattle, with exceptional weight for age & shape.
- A super Terminal sire.



Scan me for latest figures!



GOLDSTAR LUDWIG

Code: CH4251

DOB: 17/10/2015 Ped Status: PED
Myostatin: +/+ (Non-Carrier)



CALVING EASE
EASY
AVERAGE
MATURE
COWS ONLY



Bred by: Martin Ryan, Thurles, Co. Tipperary.

Genotype included in Evaluation.

Star Rating (Within Breed)	ICBF, Nov '23 Genotype Incl.	€ Value	Rel	Star Rating (Across Breed)
★★★★★	Replacement Index	€99	91% (Very High)	★★★★★
★★★★★	Terminal Index	€137	94% (Very High)	★★★★★
★★★★★	DairyBeef Index	€101	85% (Very High)	★★★★★

Expected Progeny Performance				
Calving Difficulty	Beef Heifers (% 3&4)	11.7%	89% (Very High)	50 Records
	Beef Cows (% 3&4)	7.0%	99% (Very High)	4935 Records
★★★★★	Gestation Length (days)	2.07 d	99% (Very High)	★★★★★
★★★★★	Docity (Scale)	0.03	99% (Very High)	★★★★★
★★★★★	Age at Finishing (days)	-6.04 d	99% (Very High)	★★★★★
★★★★★	Carcass Weight (Kg)	43.5 Kg	99% (Very High)	★★★★★
★★★★★	Carcass Conf (Scale 1 - 15)	1.84 Scale	99% (Very High)	★★★★★

Expected Daughter Performance				
	Daughter calving diff (%)	3.56%	98% (Very High)	
★★★★★	Daughter milk (kg)	-7.7 kg	92% (Very High)	★★★★★
★★★★★	Daughter calv interval (d)	-4.66 d	72% (High)	★★★★★

- 5 star bull for Age at Finish.
- Progeny have good weight for age.
- Works best on cows with good muscle development.



Son, bred by the McGovern family,
Overall CH champion, €6,500 at Car-
rick

Scan me for
latest figures!



NELSON

GOLDSTAR INDIRA

INDICE

ETOILE

GOLDSTAR ECHO

GOLDSTAR FLORENCE ET

LAPON

Code: CH4321

DOB: 20/12/2015 Ped Status: PED
Myostatin: +/+ (Non-Carrier)



CALVING EASE
EASY
AVERAGE
MATURE
COWS ONLY



Bred by: EARL Ofal, France.

Genotype included in Evaluation.

Star Rating (Within Breed)	ICBF, Nov '23 Genotype Incl.	€ Value	Rel	Star Rating (Across Breed)
★★★★★	Replacement Index	€64	88% (Very High)	★★★★★
★★★★★	Terminal Index	€152	96% (Very High)	★★★★★
★★★★★	DairyBeef Index	€141	95% (Very High)	★★★★★

Expected Progeny Performance				
Calving Difficulty	Beef Heifers (% 3&4)	9%	97% (Very High)	562 Records
	Beef Cows (% 3&4)	4.9%	99% (Very High)	13113 Records
★★★★★	Gestation Length (days)	2.11 d	99% (Very High)	★★★★★
★★★★★	Docity (Scale)	0.07	99% (Very High)	★★★★★
★★★★★	Age at Finishing (days)	0.41 d	99% (Very High)	★★★★★
★★★★★	Carcass Weight (Kg)	42.2 Kg	99% (Very High)	★★★★★
★★★★★	Carcass Conf (Scale 1 - 15)	2.26 Scale	99% (Very High)	★★★★★

Expected Daughter Performance				
	Daughter calving diff (%)	3.49%	98% (Very High)	
★★★★★	Daughter milk (kg)	-7.2 kg	88% (Very High)	★★★★★
★★★★★	Daughter calv interval (d)	1.99 d	54% (Average)	★★★★★

- What a legend! Only 4.9 % calving difficulty on cows and in the top 1% for Carcass Weight and the top 3% for Carcass Conformation across the breed.
- One of the best proven Charolais bulls available anywhere, It's no wonder he was the most used Charolais bull in Ireland in 2022.
- The ultimate charolais sire; calving ease, performance and quality.



Dhuish Thunder, €10,000 at the
Christmas Cracker, Gerard McIntyre

HOWARD

DOUCE

Progressive Ataxia Carrier

Scan me for
latest figures!



BUSINESS

ARCADE

TRYPHON

USSIA



WEANLING



FINISHING

CALVING EASE

☐ EASY
☐ AVERAGE
☒ MATURE COWS ONLY



Charolais



Bred by: Touillon Didier, France

Genotype included in Evaluation.

Star Rating (Within Breed)	Index ICBF, Nov'23 Genotype Incl.	€ Value	Rel	Star Rating (Across Breed)
★★★★★★	Replacement Index	€131	61% (High)	★★★★★★
★★★★★★	Terminal Index	€158	81% (Very)	★★★★★★
★★★★★★	DairyBeef Index	€117	73% (High)	★★★★★★
Expected Progeny Performance				
Calving Difficulty	Beef Heifers (% 3&4)	12.2%	59% (Average)	9 Records
	Beef Cows (% 3&4)	6.9%	96% (Very)	444 Records
★★★★★☆☆	Gestation Length (days)	2.67 days	95% (Very)	★★★★★☆☆
★★★☆☆☆☆	Docity (Scale)	-0.02	93% (Very)	★★★☆☆☆☆
★★★★★★★	Age at Finishing (days)	-4.84 days	74% (High)	★★★★★★★
★★★★★★★	Carcass Weight (Kg)	38.0 Kg	83% (Very)	★★★★★★★
★★★★★★★	Carcass Conf. (Scale 1-15)	2.24 Scale	77% (High)	★★★★★★★
Expected Daughter Performance				
	Daughter calving diff (% 3&4)	3.14%	88% (Very)	
★★★★★★★	Daughter milk (Kg)	4.3	43% (Average)	★★★★★★★☆☆
★★★★★★★	Daughter calving interval (d)	-2.97 days	40% (Average)	★★★★★★★

Progressive Ataxia Carrier

- Omega is making a name for himself as a weanling specialist.
- Progeny have excellent muscle development - super back-ends and tops.
- Omega progeny have excellent performance which is no surprise given their phenomenal length.



Omega heifer at Carrick Winter Fair '23



Omega heifer, Tully Performance Test Centre

Scan me for latest figures!





Bred by: Thierry Frecon, France

Genotype included in Evaluation.

Star Rating (Within Breed)	Index ICBF, Nov '23 <small>Genotype Incl.</small>	€ Value	Rel	Star Rating (Across Breed)
★★★★★	Replacement Index	€74	41% (Average)	★★★★★
★★★★★	Terminal Index	€129	44% (Average)	★★★★★
★★★★★	DairyBeef Index	€111	41% (Average)	★★★★★

Expected Progeny Performance

Calving Difficulty	Beef Heifers (% 3&4)	8.8%	46% (Average)	2 Records
	Beef Cows (% 3&4)	3.7%	75% (High)	17 Records
★★★★★	Gestation Length (days)	0.68 days	55% (Average)	★★★★★
★★★★★	Docility (Scale)	0.07	33% (Low)	★★★★★
★★★★★	Age at Finishing (days)	-3.84 days	54% (Average)	★★★★★
★★★★★	Carcass Weight (kg)	37.0 Kg	39% (Low)	★★★★★
★★★★★	Carcass Conf. (Scale 1-15)	1.54 Scale	39% (Low)	★★★★★

Expected Daughter Performance

	Daughter calving diff (% 3&4)	4.32%	69% (High)	
★★★★★	Daughter milk (kg)	-0.6	38% (Low)	★★★★★
★★★★★	Daughter calving interval (d)	-1.16 days	33% (Low)	★★★★★



Son. Paul Durkan, Curry, Co. Sligo



Recif CH8571

- Recif's first calves are hitting the ground and look very promising.
- He is powerful, long, wide, correct and full of beef.
- His pedigree is a full sire stack of proven French AI bulls: Jarret X Hamel X Azelier X Populaire.



Scan me for
latest figures!





Charolais



Bred by: GAEC Beaulieu Vignol Hubert, France

Genotype included in Evaluation.

Star Rating (Within Breed)	Index ICBF, Nov'23 <small>Genotype Incl.</small>	€ Value	Rel	Star Rating (Across Breed)
★★★★★★	Replacement Index	€105	38% (Low)	★★★★★★★
★★★☆☆	Terminal Index	€109	41% (Average)	★★★★★★★
★★★☆☆	DairyBeef Index	€70	36% (Low)	★★★★★★★
Expected Progeny Performance				
Calving Difficulty	Beef Heifers (% 3&4)	7.7%	39% (Low)	0 Records
	Beef Cows (% 3&4)	2.9%	62% (High)	0 Records
★★★★★★★	Gestation Length (days)	2.32 days	31% (Low)	★★★★★★★
★★★★★★★	Docility (Scale)	0.09	33% (Low)	★★★★★★★
★★★★★★★	Age at Finishing (days)	-6.25 days	50% (Average)	★★★★★★★
★★★☆☆	Carcass Weight (Kg)	25.7 Kg	39% (Low)	★★★★★★★
★★★☆☆	Carcass Conf. (Scale 1-15)	1.32 Scale	39% (Low)	★★★★★★★
Expected Daughter Performance				
	Daughter calving diff (% 3&4)	5.31%	56% (Average)	
★★★★★★★	Daughter milk (Kg)	2.1	39% (Low)	★★★★★★★
★★★★★★★	Daughter calving interval (d)	-2.94 days	31% (Low)	★★★★★★★



Sire, Giono



Giono daughter

- A super well-bred bull with a low reliability index as it is a new bloodline.
- A son of the renowned Giono, one of the most used bulls in France in recent years, known for his excellent muscle development and performance.
- He carries two copies of the profit gene F94L.



Scan me for latest figures!

DOB: 14/11/2020

Pedigree Status: PED

Myostatin: +/- (Non-Carrier)

Charolais



Bred by: GAEC Albert, France

Genotype included in Evaluation.

Star Rating (Within Breed)	Index ICBF, Nov'23 <small>Genotype Incl.</small>	€ Value	Rel	Star Rating (Across Breed)
★★★★★	Replacement Index	€93	40% (Average)	★★★★★
★★★★★	Terminal Index	€130	42% (Average)	★★★★★
★★★★★	DairyBeef Index	€112	38% (Low)	★★★★★
Expected Progeny Performance				
Calving Difficulty	Beef Heifers (% 3&4)	7.2%	43% (Average)	0 Records
	Beef Cows (% 3&4)	2.5%	65% (High)	2 Records
★★★★★	Gestation Length (days)	1.56 days	35% (Low)	★★★★★
★★★★★	Docility (Scale)	0.09	34% (Low)	★★★★★
★★★★★	Age at Finishing (days)	-4.40 days	53% (Average)	★★★★★
★★★★★	Carcass Weight (kg)	35.3 Kg	40% (Average)	★★★★★
★★★★★	Carcass Conf. (Scale 1-15)	1.29 Scale	40% (Average)	★★★★★
Expected Daughter Performance				
	Daughter calving diff (% 3&4)	4.01%	59% (Average)	
★★★★★	Daughter milk (kg)	0.4	40% (Average)	★★★★★
★★★★★	Daughter calving interval (d)	-1.84 days	32% (Low)	★★★★★

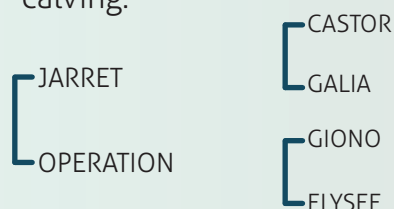


Sire, Jarret



Grandsire, Giono

- An excellent quality well-bred bull with a low reliability index as it is a new bloodline.
- Sultan's pedigree boasts an exceptional sire stack of superior proven French AI sires.
- His French genomics predict that he will be an all-rounder excelling in both maternal and terminal traits with average calving.



Scan me for
latest figures!





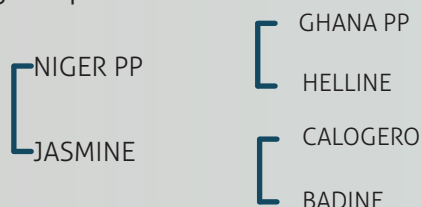
Charolais

Bred by: SCEA STE Genevieve, France

Genotype included in Evaluation.

Star Rating (Within Breed)	Index ICBF, Nov'23 Genotype Incl.	€ Value	Rel	Star Rating (Across Breed)
★★★★★★	Replacement Index	€140	37% (Low)	★★★★★★
★★★★★★	Terminal Index	€130	40% (Average)	★★★★★★
★★★★★★	DairyBeef Index	€115	37% (Low)	★★★★★★
Expected Progeny Performance				
Calving Difficulty	Beef Heifers (% 3&4)	7.1%	39% (Low)	0 Records
	Beef Cows (% 3&4)	2.7%	65% (High)	2 Records
★★★★★★	Gestation Length (days)	2.37 days	39% (Low)	★★★★★★
★★★★★★	Docity (Scale)	0.04	30% (Low)	★★★★★★
★★★★★★	Age at Finishing (days)	-2.03 days	51% (Average)	★★★★★★
★★★★★★	Carcass Weight (Kg)	31.4 Kg	37% (Low)	★★★★★★
★★★★★★	Carcass Conf. (Scale 1-15)	1.49 Scale	37% (Low)	★★★★★★
Expected Daughter Performance				
	Daughter calving diff (% 3&4)	3.94%	59% (Average)	
★★★★★★	Daughter milk (Kg)	-2.7	35% (Low)	★★★★★★
★★★★★★	Daughter calving interval (d)	-3.01 days	30% (Low)	★★★★★★

- A super well-bred bull with a low reliability index as it is a new bloodline.
- Use him and you will not be disappointed - he comes from superior proven French AI sires and had an excellent performance test.
- His French genomics predict that he will be easy calving with good performance and muscle development.



Romarin Pp



Romarin Pp

Scan me for latest figures!



CLOONRADOON RICKY

Code: **CH7503**

DOB: 19/01/2020 Ped Status: PED
Myostatin: Q204X/+ (1 Copy)



WEANLING



FINISHING

CALVING EASE
EASY
AVERAGE
MATURE COWS ONLY



Bred by: Anthony Mcdermott, Strokestown, Co. Genotype included in Evaluation.

Star Rating (Within Breed)	ICBF, Nov '23 Genotype Incl.	€ Value	Rel	Star Rating (Across Breed)
★★★★★	Replacement Index	€48	62% (High)	★★★★★
★★★★★	Terminal Index	€134	71% (High)	★★★★★
★★★★★	DairyBeef Index	€80	68% (High)	★★★★★

Expected Progeny Performance

Calving Difficulty	Beef Heifers (% 3&4)	14.3%	65% (High)	5 Records
	Beef Cows (% 3&4)	8.7%	99% (Very High)	1630 Records
★★★★★	Gestation Length (days)	2.59 d	99% (Very High)	★★★★★
★★★★★	Docility (Scale)	0.03	97% (Very High)	★★★★★
★★★★★	Age at Finishing (days)	-1.48 d	68% (High)	★★★★★
★★★★★	Carcass Weight (Kg)	40.7 Kg	69% (High)	★★★★★
★★★★★	Carcass Conf (Scale 1 - 15)	2.2 Scale	61% (High)	★★★★★

Expected Daughter Performance

	Daughter calving diff (%)	5.15%	92% (Very High)	
★★★★★	Daughter milk (kg)	-3.8 kg	49% (Average)	★★★★★
★★★★★	Daughter calv interval (d)	-2.38 d	49% (Average)	★★★★★

- Huge satisfaction with Ricky progeny among quality seeking suckler farmers.
- Progeny are powerful with exceptional muscle development.
- Use to produce top-end weanlings with extra shape, weight & class.



Ricky first prize winner Caslterea mart, Conor Sloyan

Scan me for latest figures!



FISTON

TINOR

BARONNE

CLOONRADOON NICOLE

CAVELANDS FENIAN

CLOONRADOON IZZY ET

GRANGWOOD ROYAL OAK ET

Code: **CH8262**

DOB: 22/10/2020 Ped Status: PED
Myostatin: Q204X/+ (1 Copy)



WEANLING



FINISHING

CALVING EASE
EASY
AVERAGE
MATURE COWS ONLY



Bred by: Jeremiah O'Keeffe, Knocklong, Co. Limerick. Genotype included in Evaluation.

Star Rating (Within Breed)	ICBF, Nov '23 Genotype Incl.	€ Value	Rel	Star Rating (Across Breed)
★★★★★	Replacement Index	-€64	59% (Average)	★★★★★
★★★★★	Terminal Index	€75	63% (High)	★★★★★
★★★★★	DairyBeef Index	€47	58% (Average)	★★★★★

Expected Progeny Performance

Calving Difficulty	Beef Heifers (% 3&4)	22.5%	62% (High)	2 Records
	Beef Cows (% 3&4)	17.5%	96% (Very High)	285 Records
★★★★★	Gestation Length (days)	3.9 d	92% (Very High)	★★★★★
★★★★★	Docility (Scale)	0.16	79% (High)	★★★★★
★★★★★	Age at Finishing (days)	-4.35 d	66% (High)	★★★★★
★★★★★	Carcass Weight (Kg)	39.6 Kg	59% (Average)	★★★★★
★★★★★	Carcass Conf (Scale 1 - 15)	2.49 Scale	53% (Average)	★★★★★

Expected Daughter Performance

	Daughter calving diff (%)	3.09%	89% (Very High)	
★★★★★	Daughter milk (kg)	-7.6 kg	49% (Average)	★★★★★
★★★★★	Daughter calv interval (d)	-1.26 d	46% (Average)	★★★★★

- Use to produce weanlings and show animals
- Progeny have superb muscle development, weight for age and style.
- Use on mature cows only.



Daughter at Carrick Winter Fair '23, F&D McDermott, Killeshandra

Scan me for latest figures!



GOLDSTAR ECHO

TEXAN-GIE

SHEEHILLS ULA

GRANGWOOD EMERALD

ENFIELD PICASSO

GRANGWOOD UNIFLAMME

NERON Pp

Code: CH6175

DOB: 24/10/2017 Ped Status: PED
Myostatin: Q204X/+ (1 Copy)



CALVING EASE
EASY
AVERAGE
MATURE COWS ONLY



Bred by: EARL Coiffu, France.

Genotype included in Evaluation.

Star Rating (Within Breed)	ICBF, Nov '23 Genotype Incl.	€ Value	Rel	Star Rating (Across Breed)
★★★★★	Replacement Index	€113	60% (High)	★★★★★
★★★★★	Terminal Index	€150	78% (High)	★★★★★
★★★★★	DairyBeef Index	€98	69% (High)	★★★★★

Expected Progeny Performance

Calving Difficulty	Beef Heifers (% 3&4)	8.8%	47% (Average)	2 Records
	Beef Cows (% 3&4)	3.5%	95% (Very High)	225 Records
★★★★★	Gestation Length (days)	2.44 d	83% (Very High)	★★★★★
★★★★★	Dolality (Scale)	0.03	85% (Very High)	★★★★★
★★★★★	Age at Finishing (days)	-2.99 d	79% (High)	★★★★★
★★★★★	Carcass Weight (Kg)	40.1 Kg	88% (Very High)	★★★★★
★★★★★	Carcass Conf (Scale 1 - 15)	1.83 Scale	85% (Very High)	★★★★★

Expected Daughter Performance

	Daughter calving diff (%)	3.08%	85% (Very High)	
★★★★★	Daughter milk (kg)	-1 kg	44% (Average)	★★★★★
★★★★★	Daughter calv interval (d)	-1.25 d	39% (Low)	★★★★★

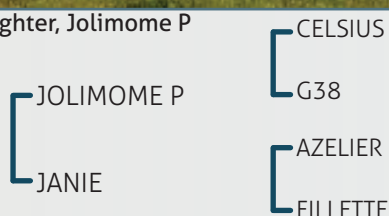
- Neron Pp progeny have excellent weight for age, +40kg carcass weight.
- Progeny are long, wide and very correct.
- Heterozygous polled - 50% of the progeny will be polled (no horns).



Scan me for latest figures!



Daughter, Jolimome P



Progressive Ataxia Carrier

MESSMER

Code: CH8112

DOB: 07/12/2016 Ped Status: PED
Myostatin: +/+ (Non-Carrier)



CALVING EASE
EASY
AVERAGE
MATURE COWS ONLY



Bred by: M COCANDEAU, France.

Genotype included in Evaluation.

Star Rating (Within Breed)	ICBF, Nov '23 Genotype Incl.	€ Value	Rel	Star Rating (Across Breed)
★★★★★	Replacement Index	€160	60% (High)	★★★★★
★★★★★	Terminal Index	€174	68% (High)	★★★★★
★★★★★	DairyBeef Index	€142	62% (High)	★★★★★

Expected Progeny Performance

Calving Difficulty	Beef Heifers (% 3&4)	7.9%	59% (Average)	4 Records
	Beef Cows (% 3&4)	2.7%	92% (Very High)	69 Records
★★★★★	Gestation Length (days)	0.31 d	87% (Very High)	★★★★★
★★★★★	Dolality (Scale)	0.15	79% (High)	★★★★★
★★★★★	Age at Finishing (days)	-4.32 d	60% (High)	★★★★★
★★★★★	Carcass Weight (Kg)	46.9 Kg	74% (High)	★★★★★
★★★★★	Carcass Conf (Scale 1 - 15)	1.68 Scale	72% (High)	★★★★★

Expected Daughter Performance

	Daughter calving diff (%)	4.71%	81% (Very High)	
★★★★★	Daughter milk (kg)	8.9 kg	69% (High)	★★★★★
★★★★★	Daughter calv interval (d)	-1.28 d	38% (Low)	★★★★★

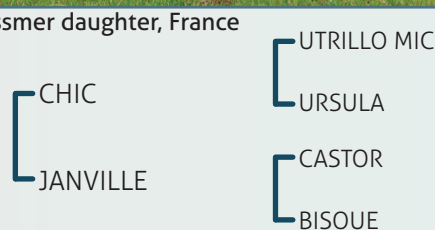
- One of the highest CH bulls available on Replacement and Terminal Index.
- One of the best bulls available from France for milk production.
- Suitable for strong pedigree maidens and 2nd calvers.



Scan me for latest figures!



Messmer daughter, France



DOB: 08/03/2021

Pedigree Status: PED

Myostatin: NT821/NT821 (2 Copies)

Belgian Blue



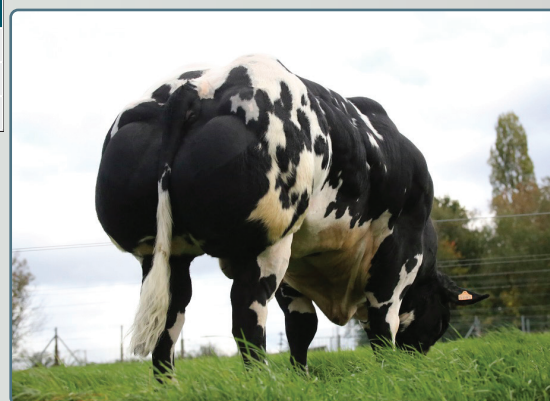
Bred by: Philippe Collignon, Belgium

Genotype included in Evaluation.

Star Rating (Within Breed)	Index ICBF, Nov'23 Genotype Incl.	€ Value	Rel	Star Rating (Across Breed)
★★★★★	Replacement Index	€28	32% (Low)	★★★★★
★★★★★	Terminal Index	€144	31% (Low)	★★★★★
	DairyBeef Index			
Expected Progeny Performance				
Calving Difficulty	Beef Heifers (% 3&4)	18.5%	44% (Average)	0 Records
	Beef Cows (% 3&4)	9.3%	56% (Average)	0 Records
★★★★★	Gestation Length (days)	2.34 days	32% (Low)	★★★★★
★★★★★	Docility (Scale)	0.25	32% (Low)	★★★★★
★★★★★	Age at Finishing (days)	0.00 days	0% (Very Low)	
★★★★★	Carcass Weight (Kg)	37.0 Kg	32% (Low)	★★★★★
★★★★★	Carcass Conf. (Scale 1-15)	3.12 Scale	32% (Low)	★★★★★
Expected Daughter Performance				
	Daughter calving diff (% 3&4)	11.32%	52% (Average)	
★★★★★	Daughter milk (Kg)	5.6	32% (Low)	★★★★★
★★★★★	Daughter calving interval (d)	7.02 days	31% (Low)	★★★★★



Eclairer De Roupage BB9857



Eclairer De Roupage BB9857

- Very exciting new sire with an impeccable pedigree; Fute X Imperial X Harisson.
- Bred to breed exceptional weanlings and show animals with shape, length, correctness and style.
- Eclairer is an outstanding specimen of the BB breed.

FUTE
OBSESSION DE ROUPAGE

GROMMIT HOF TER ZILVERBERG
AUTORITE DE SOMME
IMPERIAL DE LECLUSE
MELODIE DE ROUPAGE

Scan me for latest figures!



ROLLIE VAN DE STEENAKKER

Code: BB9854



DOB: 14/03/2021

Pedigree Status: PED

Myostatin: NT821/NT821 (2 Copies)



Belgian Blue

MacG
MAY '23



Bred by: Wim Steyaert, Belgium

Genotype included in Evaluation.

Star Rating (Within Breed)	Index ICBF, Nov '23 <small>Genotype Incl.</small>	€ Value	Rel	Star Rating (Across Breed)
★★★★★★	Replacement Index	€92	4% (Very Low)	★★★★★★
★★★☆☆☆	Terminal Index	€94	3% (Very Low)	★★★★★★
	DairyBeef Index			
Expected Progeny Performance				
Calving Difficulty	Beef Heifers (% 3&4)	14.7%	42% (Average)	0 Records
	Beef Cows (% 3&4)	7.9%	56% (Average)	0 Records
★★★☆☆☆	Gestation Length (days)	1.84 days	33% (Low)	★★★★★★
★★★★★★	Docility (Scale)	0.16	32% (Low)	★★★★★★
	Age at Finishing (days)	0.00 days	0% (Very Low)	
★★★★★★	Carcass Weight (Kg)	32.0 Kg	32% (Low)	★★★★★★
★★★★★★	Carcass Conf. (Scale 1-15)	2.39 Scale	32% (Low)	★★★★★★
Expected Daughter Performance				
	Daughter calving diff (% 3&4)	8.18%	2% (Very Low)	
★★★★★★	Daughter milk (kg)	4.4	32% (Low)	★★★★★★
★★★★★★	Daughter calving interval (d)	3.51 days	31% (Low)	★★★★★★



Rollie BB9854



Rollie BB9854

- Very exciting new sire whose pedigree includes the breed's greats Nodule des Volees, Zougar and Liberal.
- Use Rollie to breed super quality roan show animals.
- Rollie is a very well-muscled, correct, beautifully coloured bull.

HANNIBAL VD
SCHOOLHOEVE
MAURA VAN DE
STEENAKKER

NODULE DES VOLEES
DELTA VD SCHOOLHOEVE
ZOUGAR D'OZO
KATHO VAN DE STEENAKKER

Scan me for
latest figures!



CACHEMIRE DE DESSOUS LA VILLE

DOB: 23/07/2019

Pedigree Status: PED

Code: BB8947

Myostatin: NT821/NT821 (2 Copies)

Test

CALVING EASE

■ EASY
■ AVERAGE
■ MATURE
COWS ONLY

Belgian Blue



Bred by: Bruno Strepenne, Belgium

Genotype included in Evaluation.

Star Rating (Within Breed)	Index ICBF, Nov'23 <small>Genotype Incl.</small>	€ Value	Rel	Star Rating (Across Breed)
★★★★★	Replacement Index	€70	35% (Low)	★★★★★
★★★★★	Terminal Index	€114	36% (Low)	★★★★★
★★★★★	DairyBeef Index	€51	34% (Low)	★★★★★
Expected Progeny Performance				
Calving Difficulty	Beef Heifers (% 3&4)	16.5%	41% (Average)	0 Records
	Beef Cows (% 3&4)	8.2%	54% (Average)	0 Records
★★★★★	Gestation Length (days)	0.34 days	31% (Low)	★★★★★
★★★★★	Docility (Scale)	0.23	31% (Low)	★★★★★
★★★★★	Age at Finishing (days)	6.84 days	52% (Average)	★★★★★
★★★★★	Carcass Weight (Kg)	32.1 Kg	31% (Low)	★★★★★
★★★★★	Carcass Conf. (Scale 1-15)	2.52 Scale	31% (Low)	★★★★★
Expected Daughter Performance				
	Daughter calving diff (% 3&4)	6.62%	50% (Average)	
★★★★★	Daughter milk (Kg)	7.2	31% (Low)	★★★★★
★★★★★	Daughter calving interval (d)	3.09 days	31% (Low)	★★★★★

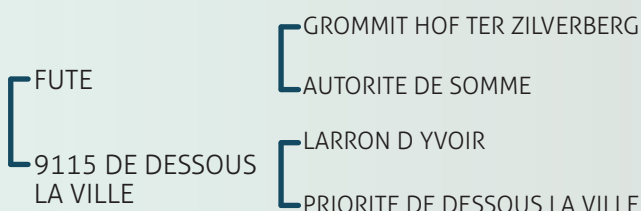


Cachemire son in Belgium



Cachemire daughter

- One of the best bulls currently available from the BBG programme sired by the renowned Fute.
- Progeny are truly exceptional - size, length, width, super shape and class.
- The Belgian birth weight index indicates average to easy calving. Calves are born small and develop very quickly.



BBG HONG WANG

Code: BB9463

DOB: 13/03/2021

Pedigree Status: PED

Myostatin: NT821/NT821 (2 Copies)

Proof
Pending

CALVING EASE

■ EASY
■ AVERAGE
■ MATURE COWS ONLY

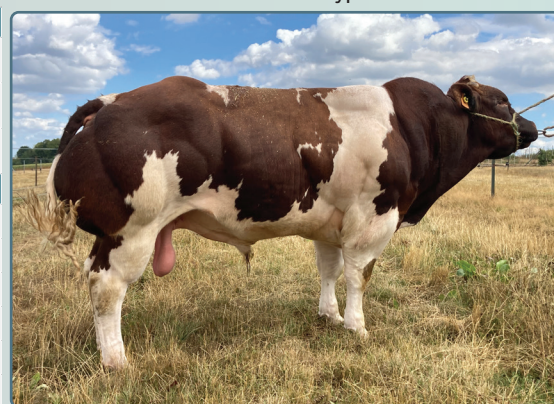
Belgian Blue



Bred by: LV Pardon, Belgium

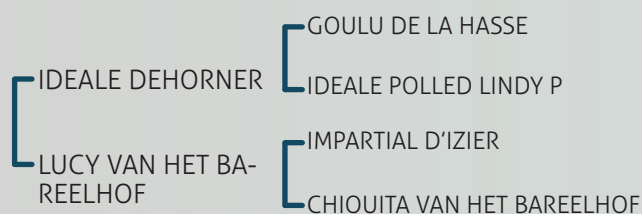
Genotype included in Evaluation.

Star Rating (Within Breed)	Index ICBF, Nov'23	Genotype Incl.	€ Value	Rel	Star Rating (Across Breed)
★★★★★	Replacement Index		€83	36% (Low)	★★★★★
★★★★★	Terminal Index		€114	38% (Low)	★★★★★
★★★★★	DairyBeef Index		€72	36% (Low)	★★★★★
Expected Progeny Performance					
Calving Difficulty	Beef Heifers (% 3&4)		14.5%	42% (Average)	0 Records
	Beef Cows (% 3&4)		6.9%	56% (Average)	0 Records
★★★★★	Gestation Length (days)		-0.46 days	34% (Low)	★★★★★
★★★★★	Docility (Scale)		0.25	34% (Low)	★★★★★
★★★★★	Age at Finishing (days)		-0.76 days	53% (Average)	★★★★★
★★★★★	Carcass Weight (Kg)		27.4 Kg	34% (Low)	★★★★★
★★★★★	Carcass Conf. (Scale 1-15)		2.36 Scale	34% (Low)	★★★★★
Expected Daughter Performance					
	Daughter calving diff (% 3&4)		7.97%	52% (Average)	
★★★★★	Daughter milk (Kg)		4.4	33% (Low)	★★★★★
★★★★★	Daughter calving interval (d)		4.55 days	32% (Low)	★★★★★



BBG Hong Wang

- Use Hong Wang to breed super quality roan show animals.
- Hong Wang is a very well-muscled, correct bull from a proven excellent dam line.
- He is sure to breed exceptional stock with the two great bulls Impartial d'Izier & Germinal de Fooz in his pedigree.



Scan me for
latest figures!



NOVATEUR DES PRINCES DE LIGNE Pp

DOB:30/05/2019

Pedigree Status: PED

Code: BB8941

Myostatin: NT821/NT821 (2 Copies)



CALVING EASE
EASY
AVERAGE
MATURE
COWS ONLY

Belgian Blue



MacG
MAY '22



Bred by: Van Heule, Elevage SPRL, Belgium

Genotype included in Evaluation.

Star Rating (Within Breed)	Index ICBF, Nov'23 Genotype Incl.	€ Value	Rel	Star Rating (Across Breed)
★★★★★	Replacement Index	€145	36% (Low)	★★★★★
★★★★★	Terminal Index	€131	37% (Low)	★★★★★
★★★★★	DairyBeef Index	€135	35% (Low)	★★★★★
Expected Progeny Performance				
Calving Difficulty	Beef Heifers (% 3&4)	11.5%	42% (Average)	0 Records
	Beef Cows (% 3&4)	5.6%	55% (Average)	0 Records
★★★★★	Gestation Length (days)	-0.62 days	33% (Low)	★★★★★
★★★★★	Docity (Scale)	0.23	33% (Low)	★★★★★
★★★★★	Age at Finishing (days)	4.36 days	53% (Average)	★★★★★
★★★★★	Carcass Weight (Kg)	29.1 Kg	32% (Low)	★★★★★
★★★★★	Carcass Conf. (Scale 1-15)	2.62 Scale	32% (Low)	★★★★★
Expected Daughter Performance				
	Daughter calving diff (% 3&4)	6.46%	52% (Average)	
★★★★★	Daughter milk (kg)	5.3	32% (Low)	★★★★★
★★★★★	Daughter calving interval (d)	1.96 days	32% (Low)	★★★★★



Novateur BB8941



Novateur BB8941

- Novateur is a super quality bull and he is a carrier of the **red factor**.
- Plenty of shape in Novateur's pedigree with Zougar & Adajio.
- Progeny in Belgium are born small and develop quickly.

IDEALE DEHORNER

IDEALE POLLED PIRATE RC ET

ZOUGAR D'OZO

IRIS DES PRINCES DE LIGNE

IDEALE BLACK
BEARD PP ET

LAVANDE DES
PRINCES DE LIGNE

Scan me for
latest figures!



DELURE DE LA BEOLE

Code: **BB4498**

DOB: 29/08/2014 Ped Status: PED
Myostatin: NT821/NT821 (2 Copies)



CALVING EASE
EASY
AVERAGE
MATURE COWS ONLY



Bred by: Wilmet Verlee, France.

Genotype included in Evaluation.

Star Rating (Within Breed)	ICBF, Nov '23 Genotype Incl.	€ Value	Rel	Star Rating (Across Breed)
★★★★★	Replacement Index	€34	71% (High)	★★★★★
★★★★★	Terminal Index	€100	86% (Very High)	★★★★★
★★★★★	DairyBeef Index	-€79	81% (Very High)	★★★★★

Expected Progeny Performance

Calving Difficulty	Beef Heifers (% 3&4)	23.3%	72% (High)	19 Records
	Beef Cows (% 3&4)	12.0%	98% (Very High)	844 Records
★★★★★	Gestation Length (days)	1.11 d	98% (Very High)	★★★★★
★★★★★	Docility (Scale)	0.18	96% (Very High)	★★★★★
★★★★★	Age at Finishing (days)	5 d	87% (Very High)	★★★★★
★★★★★	Carcass Weight (Kg)	35 Kg	96% (Very High)	★★★★★
★★★★★	Carcass Conf (Scale 1 - 15)	2.93 Scale	95% (Very High)	★★★★★

Expected Daughter Performance

	Daughter calving diff (%)	4.97%	91% (Very High)	
★★★★★	Daughter milk (kg)	4.2 kg	57% (Average)	★★★★★
★★★★★	Daughter calv interval (d)	4.78 d	44% (Average)	★★★★★

- Delure is a proven superior weanling producer.
- Works best on 3/4 Limousin cows.
- He transmits correctness, style and shape.



Scan me for latest figures!



Victoria Farms Delure daughter

LIBERAL D' OCHAMPS

BALANCIER DE LA BEOLE

ABSINTHE DE LA BEOLE

BRECHE DE LA BEOLE

JUVENTUS DE L'ECLUSE

VERO DE LA BEOLE

NEWTON DE FONTENA

Code: **BB7443**

DOB: 27/09/2017 Ped Status: PED
Myostatin: NT821/NT821 (2 Copies)



CALVING EASE
EASY
AVERAGE
MATURE COWS ONLY



Bred by: Maurice Marot, Belgium.

Genotype included in Evaluation.

Star Rating (Within Breed)	ICBF, Nov '23 Genotype Incl.	€ Value	Rel	Star Rating (Across Breed)
★★★★★	Replacement Index	-€1	45% (Average)	★★★★★
★★★★★	Terminal Index	€130	52% (Average)	★★★★★
★★★★★	DairyBeef Index	€47	51% (Average)	★★★★★

Expected Progeny Performance

Calving Difficulty	Beef Heifers (% 3&4)	19.5%	46% (Average)	0 Records
	Beef Cows (% 3&4)	10.5%	88% (Very High)	67 Records
★★★★★	Gestation Length (days)	0.79 d	76% (High)	★★★★★
★★★★★	Docility (Scale)	0.3	61% (High)	★★★★★
★★★★★	Age at Finishing (days)	2.67 d	56% (Average)	★★★★★
★★★★★	Carcass Weight (Kg)	37.6 Kg	49% (Average)	★★★★★
★★★★★	Carcass Conf (Scale 1 - 15)	3.11 Scale	38% (Low)	★★★★★

Expected Daughter Performance

	Daughter calving diff (%)	8.09%	80% (Very High)	
★★★★★	Daughter milk (kg)	5.3 kg	34% (Low)	★★★★★
★★★★★	Daughter calv interval (d)	9.9 d	34% (Low)	★★★★★

- Newton's progeny are impressive - big, long, powerful and well-muscled.
- Progeny are very heavily muscled with excellent weight for age.
- The perfect bull to breed top-end weanlings from R grade cows.



Newton progeny

Scan me for latest figures!



IMPERIAL DE L'ECLUSE

JET SET VAN DEN HONDELEE

SUPERSTAR DE CENTFONTAINE

7352 DE FONTENA

FLIRTER VD KERKENHOFSTEDE

ADOREE DE FONTENA

DOB:18/09/2019

Pedigree Status: PED

Myostatin: NT821/NT821 (2 Copies)

Belgian Blue



Bred by: Benoit Mahoux, Belgium

Genotype included in Evaluation.

Star Rating (Within Breed)	Index ICBF, Nov'23 Genotype Incl.	€ Value	Rel	Star Rating (Across Breed)
★★★★★	Replacement Index	€56	38% (Low)	★★★★★
★★★★★	Terminal Index	€137	40% (Average)	★★★★★
★★★☆☆	DairyBeef Index	€56	38% (Low)	★★★★★
Expected Progeny Performance				
Calving Difficulty	Beef Heifers (% 3&4)	16.6%	45% (Average)	0 Records
	Beef Cows (% 3&4)	7.8%	59% (Average)	0 Records
★★★★★	Gestation Length (days)	0.43 days	37% (Low)	★★★★★
★★★★★	Docility (Scale)	0.26	36% (Low)	★★★★★
★★★☆☆	Age at Finishing (days)	6.84 days	55% (Average)	★★★★★
★★★★★	Carcass Weight (Kg)	35.8 Kg	35% (Low)	★★★★★
★★★★★	Carcass Conf. (Scale 1-15)	3.15 Scale	35% (Low)	★★★★★
Expected Daughter Performance				
	Daughter calving diff (% 3&4)	6.26%	55% (Average)	
★★★★★	Daughter milk (kg)	5.5	34% (Low)	★★★★★
★★★☆☆	Daughter calving interval (d)	8.67 days	33% (Low)	★★★★★



Edison daughter in Belgium



Edison son in Belgium

- Edison's first calves in Belgium were born early and shaped up quickly.
- Progeny exhibit excellent muscle development.
- A grandson of the king of shape - Imperial de L'Ecluse.

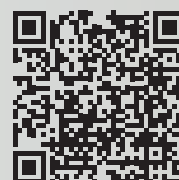
JET SET VAN DEN
HONDELEEVALEUREUSE DE
CENTFONTAINE

IMPERIAL DE L'ECLUSE

SUPERSTAR DE CENTFONTAINE

NOCEUR DE FOOZ

POESIE DE CENTFONTAINE

Scan me for
latest figures!

Benevole

Benevole Du Bouchelet Code: **BB9553**

DOB:19/09/2017 Ped Status: PED

Myostatin: NT821/NT821 (2 Copies)

Bred by: AndrZ et Benoit Demarcin, Belgium

- One of the highest bulls on conformation and weight available from Belgium.
- Carrier of the **red factor**.
- Use on mature cows only.



FINISHING



WEANLING

Scan me for
latest figures!



CALVING EASE
☐ EASY
☐ AVERAGE
☒ MATURE COWS ONLY

Available Female Sexed Only



MaxG
May'19



Pre-Order

Genotype included in Evaluation.

Verrati

Code: **BB9580**

Verrati De Corbreville

DOB:08/03/2016 Ped Status: PED

Myostatin: NT821/NT821 (2 Copies)

Bred by: Christophe et Guebenne Legeux, Belgium

- Verrati is transmitting extreme muscling.
- Same index for conformation as Canadian club and Serpentin ZSD.
- Works best on tall cows, he will add the shape.



FINISHING



WEANLING

Scan me for
latest figures!



CALVING EASE
☐ EASY
☐ AVERAGE
☒ MATURE COWS ONLY

Available Female Sexed Only



Pre-Order

Genotype included in Evaluation.

Ilot

Code: **IDB**

ILOT DU BOUCHELET

DOB:22/10/2005 Ped Status: PED

Myostatin: NT821/NT821 (2 Copies)

Bred by: Christophe et FrZdZric Lequeux, Belgium

- Ilot transmits excellent weight and shape to his progeny
- Excellent legs & feet.
- Use to produce show weanlings.



FINISHING



WEANLING

Scan me for
latest figures!



CALVING EASE
☐ EASY
☐ AVERAGE
☒ MATURE COWS ONLY

Available Female Sexed Only



Pre-Order

Genotype included in Evaluation.

MALE AND FEMALE SEXED SEMEN AVAILABLE FROM SELECT SIRES.

NOX DE L'ORGELOT

Code: **BB5223**

DOB: 27/04/2017 Ped Status: PED
Myostatin: NT821/NT821 (2 Copies)



CALVING EASE
EASY
AVERAGE
MATURE COWS ONLY

Available Female Sexed

Belgian Blue



Bred by: Bernard Schoiez, Belgium.

Genotype included in Evaluation.

Star Rating (Within Breed)	ICBF, Nov '23 Genotype Incl.	€ Value	Rel	Star Rating (Across Breed)
★★★★★	Replacement Index	€58	73% (High)	★★★★★
★★★★★	Terminal Index	€111	89% (Very High)	★★★★★
★★★★★	DairyBeef Index	€73	84% (Very High)	★★★★★

Expected Progeny Performance

Calving Difficulty	Beef Heifers (% 3&4)	20.8%	70% (High)	8 Records
	Beef Cows (% 3&4)	12.9%	98% (Very High)	1237 Records
★★★★★	Gestation Length (days)	1.2 d	98% (Very High)	★★★★★
★★★★★	Dolality (Scale)	0.14	97% (Very High)	★★★★★
★★★★★	Age at Finishing (days)	-4.03 d	88% (Very High)	★★★★★
★★★★★	Carcass Weight (Kg)	31.9 Kg	96% (Very High)	★★★★★
★★★★★	Carcass Conf (Scale 1 - 15)	3.06 Scale	95% (Very High)	★★★★★

Expected Daughter Performance

	Daughter calving diff (%)	11.63%	92% (Very High)	
★★★★★	Daughter milk (kg)	3.4 kg	56% (Average)	★★★★★
★★★★★	Daughter calv interval (d)	1.75 d	51% (Average)	★★★★★

- Nox has established himself as an exceptional weanling producer.
- Progeny are exceptionally well muscled with good weight for age.
- Use on mature cows only.



Nox daughter, bred by Martin Calvey,
owned by Gabriel Sloyan

Scan me for latest figures!



ADAJIO DE BRAY
STUPIDE DE L'ORGELOT

EMPIRE D'OCHAIN
HUMAINE ET DE BRAY
BENHUR DU CHAMP BOUVAL
PASTILLE DE L'ORGELOT

OCTOPUS DE BIERWA

Code: **BB8944**

DOB: 01/01/2020 Ped Status: PED
Myostatin: NT821/NT821 (2 Copies)

Test

CALVING EASE
EASY
AVERAGE
MATURE COWS ONLY



Bred by: André et Benoit Demarcin, Belgium.

Genotype included in Evaluation.

Star Rating (Within Breed)	ICBF, Nov '23 Genotype Incl.	€ Value	Rel	Star Rating (Across Breed)
★★★★★	Replacement Index	€42	36% (Low)	★★★★★
★★★★★	Terminal Index	€134	38% (Low)	★★★★★
★★★★★	DairyBeef Index	€69	36% (Low)	★★★★★

Expected Progeny Performance

Calving Difficulty	Beef Heifers (% 3&4)	18.8%	42% (Average)	0 Records
	Beef Cows (% 3&4)	11.0%	56% (Average)	0 Records
★★★★★	Gestation Length (days)	0.4 d	33% (Low)	★★★★★
★★★★★	Dolality (Scale)	0.2	33% (Low)	★★★★★
★★★★★	Age at Finishing (days)	5 d	54% (Average)	★★★★★
★★★★★	Carcass Weight (Kg)	38.8 Kg	33% (Low)	★★★★★
★★★★★	Carcass Conf (Scale 1 - 15)	3.03 Scale	33% (Low)	★★★★★

Expected Daughter Performance

	Daughter calving diff (%)	8.26%	52% (Average)	
★★★★★	Daughter milk (kg)	4.9 kg	32% (Low)	★★★★★
★★★★★	Daughter calv interval (d)	5.3 d	32% (Low)	★★★★★

- Octopus is a very heavily muscled bull from a high muscle pedigree.
- He has many top sires for conformation in his pedigree, Darko, Adajio, Germinal de Fooz.
- Octopus himself is full of class!



Octopus calf, bred by John Daly

Scan me for latest figures!



DARKO DE CENT-FONTAINE
LILY DE BIERWA

WILMOTS DU FALGI
SUPERSTAR DE CENTFONTAINE
OR DE BEAUJEU
JONCTION DE BIERWE

Rosemount Cash ET

Rosemount Cash ET Code: **RWS**

DOB:08/09/2008 Ped Status: PED

Myostatin: NT821/NT821 (2 Copies)

Bred by: Trevor Ashmore, Co. Wexford.

- Proven terminal sire suitable for weanling production & finishing.
- Works best on 3/4 LM, BA & PT cows.
- Top 1% of the BB breed for functionality.



FINISHING



WEANLING

Scan me for latest figures!



CALVING EASE
☐ EASY
☐ AVERAGE
☒ MATURE COWS ONLY



Genotype included in Evaluation.

Mambo

Code: **S3750**

Mambo Des Peupliers

DOB:30/03/2016 Ped Status: PED

Myostatin: NT821/NT821 (2 Copies)

Bred by: Denis Kinet, Belgium

- Mambo transmits calving ease, short gestation and good quality.
- Use to produce quality cattle with shape without jeopardising calving ease.



FINISHING



WEANLING

Scan me for latest figures!



CALVING EASE
☐ EASY
☐ AVERAGE
☒ MATURE COWS ONLY



Available Female Sexed Only

Pre-Order

Genotype included in Evaluation.

Top Side Pp

Code: **BB7383**

Topside Out There

DOB:20/07/2019 Ped Status: PED

Myostatin: NT821/NT821 (2 Copies)

Bred by: Ross & Elaine Pattinson, UK

- Magic combination of calving ease and quality.
- Works best on 3/4 bred Limousin cows.
- Average calving, same level as Folon (FSN).



FINISHING



WEANLING



Hetro Polled



Scan me for latest figures!

CALVING EASE
☐ EASY
☒ AVERAGE
☐ MATURE COWS ONLY



MaxG
SEP 20



Genotype included in Evaluation.

MALE AND FEMALE SEXED SEMEN AVAILABLE FROM SELECT SIRES.

RUBYJEN HERE'S JOHNNY

DOB:20/04/2016

Pedigree Status: PED

Code: SI4350

Myostatin: +/- (Non-Carrier)



REPLACEMENT



FINISHING



WEANLING

CALVING EASE

☐ EASY
☒ AVERAGE
☐ MATURE
COWS ONLY

Simmental



Bred by: Seamus Aherne, Cappamore, Co. Limerick

Genotype included in Evaluation.

Star Rating (Within Breed)	Index ICBF, Nov'23 Genotype Incl.	€ Value	Rel	Star Rating (Across Breed)
★★★★★	Replacement Index	€168	82% (Very)	★★★★★
★★★★★	Terminal Index	€97	86% (Very)	★★★★★
★★★★★	DairyBeef Index	€64	80% (Very)	★★★★★
Expected Progeny Performance				
Calving Difficulty	Beef Heifers (% 3&4)	9.2%	74% (High)	8 Records
	Beef Cows (% 3&4)	3.6%	95% (Very)	214 Records
★★★★★	Gestation Length (days)	1.23 days	94% (Very)	★★★★★
★★★★★	Docility (Scale)	0.01	92% (Very)	★★★★★
★★★★★	Age at Finishing (days)	-2.72 days	87% (Very)	★★★★★
★★★★★	Carcass Weight (Kg)	26.1 Kg	95% (Very)	★★★★★
★★★★★	Carcass Conf. (Scale 1-15)	1.62 Scale	94% (Very)	★★★★★
Expected Daughter Performance				
	Daughter calving diff (% 3&4)	3.70%	90% (Very)	
★★★★★	Daughter milk (kg)	8.7	79% (High)	★★★★★
★★★★★	Daughter calving interval (d)	-2.18 days	58% (Average)	★★★★★



Johnny daughter, Ross Brady



Johnny son, M Halpin

- No. 2 SI available on Replacement Index and one of the highest available on Terminal Index.
- Here's Johnny excels in all the important traits for profitable suckling; carcass weight, conformation, milk, fertility & daughter calving ability.
- Very functional progeny with excellent legs & feet.

CELTIC BENNY ET
 TOWERHILL RUBY- JEN
 GLEBEFARM TYSON
 CELTIC TINA
 MARBELHILL LIAM
 TOWERHILL JENNY

Scan me for
latest figures!



LEEHERD LYNX 364

Code: SI7491

DOB: 30/08/2019

Pedigree Status: PED

Myostatin: +/- (Non-Carrier)

CALVING EASE

☐ EASY
☒ AVERAGE
☐ MATURE COWS ONLY

Available Female Sexed



Simmental

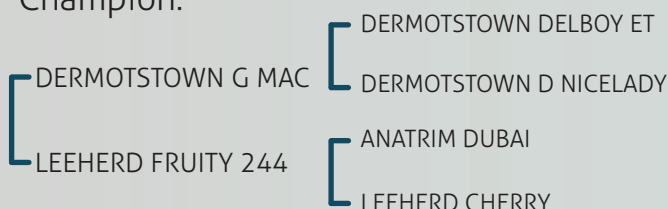


Bred by: John Finnegan, Coachford, Co. Cork

Genotype included in Evaluation.

Star Rating (Within Breed)	Index ICBF, Nov'23 Genotype Incl.	€ Value	Rel	Star Rating (Across Breed)
★★★★★	Replacement Index	€84	57% (Average)	★★★★★
★★★★★	Terminal Index	€70	64% (High)	★★★★★
★★★★★	DairyBeef Index	€51	63% (High)	★★★★★
Expected Progeny Performance				
Calving Difficulty	Beef Heifers (% 3&4)	10.4%	81% (Very)	67 Records
	Beef Cows (% 3&4)	4.8%	96% (Very)	306 Records
★★★★★	Gestation Length (days)	3.38 days	97% (Very)	★★★★★
★★★★★	Docility (Scale)	0.01	87% (Very)	★★★★★
★★★★★	Age at Finishing (days)	-9.02 days	60% (High)	★★★★★
★★★★★	Carcass Weight (kg)	24.6 Kg	61% (High)	★★★★★
★★★★★	Carcass Conf. (Scale 1-15)	1.52 Scale	50% (Average)	★★★★★
Expected Daughter Performance				
	Daughter calving diff (% 3&4)	4.99%	92% (Very)	
★★★★★	Daughter milk (kg)	9.5	44% (Average)	★★★★★
★★★★★	Daughter calving interval (d)	-1.21 days	39% (Low)	★★★★★

- Great satisfaction with Lynx first calves, quality calves that were very lively at birth.
- Lynx comes from a great dam line at Leeherd.
- He is the same magic cross of G Mac and Dubai which produced Leeherd Legend, 2022 Royal Cornwall Male Champion & Devon County show overall Simmental Champion.



Lynx calf, Enniscrone show prize winner, Fredrick Dolan



Son, Towerhill Peter Pan, bred by Jennie Aherne

Scan me for latest figures!



LISNACRANN FIFTY CENT

Code: **SI2469**

DOB: 25/10/2014 Ped Status: PED
Myostatin: +/- (Non-Carrier)



CALVING EASE
EASY
AVERAGE
MATURE
COWS ONLY



Bred by: Michael Oliver, Swinford, Co. Mayo.

Genotype included in Evaluation.

Star Rating (Within Breed)	ICBF, Nov '23 Genotype Incl.	€ Value	Rel	Star Rating (Across Breed)
★★★★★	Replacement Index	€153	97% (Very High)	★★★★★
★☆☆☆☆	Terminal Index	€41	96% (Very High)	★☆☆☆☆
★★★★★	DairyBeef Index	€62	95% (Very High)	★★★★★

Expected Progeny Performance

Calving Difficulty	Beef Heifers (% 3&4)	9.1%	99% (Very High)	1460 Records
	Beef Cows (% 3&4)	3.7%	99% (Very High)	5826 Records
★★★★★	Gestation Length (days)	0.49 d	99% (Very High)	★★★★★
★★★★★	Dolcily (Scale)	0.11	99% (Very High)	★★★★★
★☆☆☆☆	Age at Finishing (days)	-1.51 d	99% (Very High)	★☆☆☆☆
★☆☆☆☆	Carcass Weight (Kg)	14.3 Kg	99% (Very High)	★☆☆☆☆
★☆☆☆☆	Carcass Conf (Scale 1 - 15)	0.98 Scale	99% (Very High)	★☆☆☆☆

Expected Daughter Performance

	Daughter calving diff (%)	5.31%	99% (Very High)	
★★★★★	Daughter milk (kg)	8.4 kg	99% (Very High)	★★★★★
★★★★★	Daughter calv interval (d)	-6.43 d	96% (Very High)	★★★★★

- A proven, reliable cow maker.
- Daughters are exceptionally docile, functional working cows with excellent fertility, no. 1 SI available for calving interval.
- Fifty cent has all the important traits to produce profitable cows; milk, fertility, calving ability & docility.



Scan me for latest figures!



Daughter, Herbie Griffiths



LIS-NA-RI GUCCI

Code: **SI4250**

DOB: 20/10/2015 Ped Status: PED
Myostatin: +/- (Non-Carrier)



CALVING EASE
EASY
AVERAGE
MATURE
COWS ONLY



Bred by: Padraig Hanley, Lisnari, Co. Roscommon.

Genotype included in Evaluation.

Star Rating (Within Breed)	ICBF, Nov '23 Genotype Incl.	€ Value	Rel	Star Rating (Across Breed)
★★★★★	Replacement Index	€160	90% (Very High)	★★★★★
★★★★★	Terminal Index	€70	94% (Very High)	★★★★★
★★★★★	DairyBeef Index	€74	92% (Very High)	★★★★★

Expected Progeny Performance

Calving Difficulty	Beef Heifers (% 3&4)	8.4%	96% (Very High)	276 Records
	Beef Cows (% 3&4)	3.3%	99% (Very High)	1416 Records
★★★★★	Gestation Length (days)	2.21 d	99% (Very High)	★★★★★
★★★★★	Dolcily (Scale)	0.08	98% (Very High)	★★★★★
★★★★★	Age at Finishing (days)	-4.46 d	96% (Very High)	★★★★★
★★★★★	Carcass Weight (Kg)	19.2 Kg	99% (Very High)	★★★★★
★★★★★	Carcass Conf (Scale 1 - 15)	1.62 Scale	99% (Very High)	★★★★★

Expected Daughter Performance

	Daughter calving diff (%)	5.24%	97% (Very High)	
★★★★★	Daughter milk (kg)	7.4 kg	91% (Very High)	★★★★★
★★★★★	Daughter calv interval (d)	-2.79 d	69% (High)	★★★★★

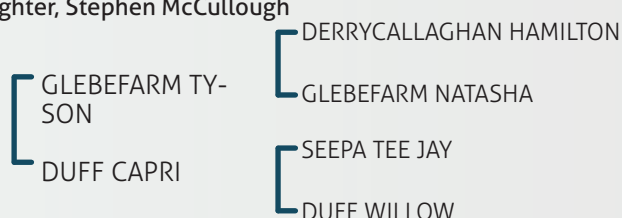
- The perfect cow maker, average in size, good conformation, docility, milk and fertility.
- Gucci progeny are early maturing and well muscled.
- Great satisfaction with his daughters.



Scan me for latest figures!



Daughter, Stephen McCullough



CURAHEEN EARP

Code: **SI2152**

DOB: 28/12/2013 Ped Status: PED
Myostatin: +/- (Non-Carrier)



CALVING EASE
EASY
AVERAGE
MATURE
COWS ONLY



Bred by: Wall family, Newcastle, Co.Dublin.

Genotype included in Evaluation.

Star Rating (Within Breed)	ICBF, Nov '23 Genotype Incl.	€ Value	Rel	Star Rating (Across Breed)
★★★★★	Replacement Index	€176	98% (Very High)	★★★★★
★★★★★	Terminal Index	€86	96% (Very High)	★★★★★
★★★★★	DairyBeef Index	€70	95% (Very High)	★★★★★

Expected Progeny Performance

	Beef Heifers (% 3&4)	8.6%	99% (Very High)	961 Records
Calving Difficulty	Beef Cows (% 3&4)	3.7%	99% (Very High)	8016 Records
★★★★★	Gestation Length (days)	1.71 d	99% (Very High)	★★★★★
★★★★★	Dolality (Scale)	0.07	99% (Very High)	★★★★★
★★★★★	Age at Finishing (days)	-5.32 d	99% (Very High)	★★★★★
★★★★★	Carcass Weight (kg)	22.7 Kg	99% (Very High)	★★★★★
★★★★★	Carcass Conf (Scale 1 - 15)	1.56 Scale	99% (Very High)	★★★★★

Expected Daughter Performance

	Daughter calving diff (%)	4.48%	99% (Very High)	
★★★★★	Daughter milk (kg)	5.3 kg	99% (Very High)	★★★★★
★★★★★	Daughter calv interval (d)	-6.72 d	96% (Very High)	★★★★★

- No. 1 SI available for Replacement Index @98% reliability,
- No. 2 SI available for Calving Interval.
- Earp is the best bull available to breed replacements without compromising on terminal traits.



Scan me for latest figures!



Earp daughter, McKees Donegal

HILLCREST CHAMPION

RACEVIEW MERLE-BEAUTY

KILBRIDE FARM MILLAR

BLACKFORD MAVIS

CURAHEEN VIO (ET)

BLACKFORD SIS-KIN

PORTROYAL MR BULL PP

Code: **SI8520**

DOB: 04/03/2020 Ped Status: PED
Myostatin: +/- (Non-Carrier)



Bred by: John Hession, Ballinrobe, Co. Mayo.

Genotype included in Evaluation.

Star Rating (Within Breed)	ICBF, Nov '23 Genotype Incl.	€ Value	Rel	Star Rating (Across Breed)
★★★★★	Replacement Index	€153	44% (Average)	★★★★★
★★★★★	Terminal Index	€81	48% (Average)	★★★★★
★★★★★	DairyBeef Index	€99	46% (Average)	★★★★★

Expected Progeny Performance

	Beef Heifers (% 3&4)	4.5%	48% (Average)	2 Records
Calving Difficulty	Beef Cows (% 3&4)	1.4%	71% (High)	13 Records
★★★★★	Gestation Length (days)	2.01 d	72% (High)	★★★★★
★★★★★	Dolality (Scale)	0.09	39% (Low)	★★★★★
★★★★★	Age at Finishing (days)	-4.4 d	54% (Average)	★★★★★
★★★★★	Carcass Weight (kg)	16.4 Kg	44% (Average)	★★★★★
★★★★★	Carcass Conf (Scale 1 - 15)	1.17 Scale	42% (Average)	★★★★★

Expected Daughter Performance

	Daughter calving diff (%)	5.41%	66% (High)	
★★★★★	Daughter milk (kg)	8.4 kg	41% (Average)	★★★★★
★★★★★	Daughter calv interval (d)	-1.95 d	37% (Low)	★★★★★

- Great satisfaction with Mr Bull's first calves.
- This is an exciting, easy fleshing, well-muscled homozygous polled bull.
- His dam is a very fertile cow with an excellent udder and a consistent breeder of quality.



Scan me for latest figures!



Mr Bull PP

FEDAL JURA PP

PORTROYAL DAI

ARDADONEY BON JOVI 10(P)12UK

ARDADONEY VELMA(P) IMP '12 UK

PORTROYAL JIM BOB P

PORTROYAL ETO PP

TURLOUGHMORE MAGNIFICENT

Code: **AU4683**

DOB: 20/01/2017 Ped Status: PED

Myostatin: Profit gene: F94L/F94L(2 Copies)



CALVING EASE
☒ EASY
☐ AVERAGE
☐ MATURE COWS ONLY

WEANLING

REPLACEMENT

FINISHING

Aubrac



Bred by: Kevin O' Brien, Athenry, Co. Galway

Genotype included in Evaluation.

Star Rating (Within Breed)	ICBF, Nov '23 Genotype Incl.	€ Value	Rel	Star Rating (Across Breed)
★★★★★	Replacement Index	€252	85% (Very High)	★★★★★
★★★★★	Terminal Index	€141	94% (Very High)	★★★★★
★★★★★	DairyBeef Index	€176	94% (Very High)	★★★★★

Expected Progeny Performance

Calving Difficulty	Beef Heifers (% 3&4)	6.3%	97% (Very High)	492 Records
	Beef Cows (% 3&4)	2.8%	98% (Very High)	828 Records
★★★★★	Gestation Length (days)	0.64 d	99% (Very High)	★★★★★
★★★★★	Dolcity (Scale)	0.1	98% (Very High)	★★★★★
★★★★★	Age at Finishing (days)	-9.4 d	98% (Very High)	★★★★★
★★★★★	Carcass Weight (Kg)	18.6 Kg	99% (Very High)	★★★★★
★★★★★	Carcass Conf (Scale 1 - 15)	1.79 Scale	99% (Very High)	★★★★★

Expected Daughter Performance

	Daughter calving diff (%)	4.56%	97% (Very High)	
★★★★★	Daughter milk (kg)	2.9 kg	83% (Very High)	★★★★★
★★★★★	Daughter calv interval (d)	-8.36 d	55% (Average)	★★★★★

- No. 1 AU available on Replacement Index.
- Magnificent progeny have excellent weight for age, shape and docility.
- An all-round bull high in all the important Terminal and Replacement traits.



Magnificent Heifer, Ross Brady

Scan me for latest figures!



DESPAGNOU

ANDALOUS

ROUZETTE

GARVANAUGH 10

JOHNSTOWN CALUM 25

GARVANAUGH BERRELL

LEACAN KING

Code: **PT4215**

DOB: 12/09/2015

Ped Status: PED

Myostatin:



CALVING EASE
☒ EASY
☐ AVERAGE
☐ MATURE COWS ONLY

WEANLING

FINISHING

Parthenaise



Bred by: William Colleary, Lacken, Enniscrone, Co. Sligo

Star Rating (Within Breed)	ICBF, Nov '23 Genotype Incl.	€ Value	Rel	Star Rating (Across Breed)
★★★★★	Replacement Index	€134	75% (High)	★★★★★
★★★★★	Terminal Index	€124	84% (Very High)	★★★★★
★★★★★	DairyBeef Index	€156	79% (High)	★★★★★

Expected Progeny Performance

Calving Difficulty	Beef Heifers (% 3&4)	7.5%	81% (Very High)	52 Records
	Beef Cows (% 3&4)	4.0%	92% (Very High)	113 Records
★★★★★	Gestation Length (days)	0.89 d	90% (Very High)	★★★★★
★★★★★	Dolcity (Scale)	0.04	79% (High)	★★★★★
★★★★★	Age at Finishing (days)	2.1 d	79% (High)	★★★★★
★★★★★	Carcass Weight (Kg)	27.2 Kg	94% (Very High)	★★★★★
★★★★★	Carcass Conf (Scale 1 - 15)	2.27 Scale	92% (Very High)	★★★★★

Expected Daughter Performance

	Daughter calving diff (%)	6.35%	89% (Very High)	
★★★★★	Daughter milk (kg)	-4.1 kg	63% (High)	★★★★★
★★★★★	Daughter calv interval (d)	-0.96 d	52% (Average)	★★★★★

- One of the highest PT bulls available on Replacement and Terminal Index.
- King's progeny have excellent weight for age, shape and docility.
- Short gestation sire.



Sire, Crannagh Elerzar (E2C)

Scan me for latest figures!



CRANNAGH ELERZAR

CRANNAGH AARON

CRANNAGH ACHSAH

LISNAGRANCHY HARINA

LISNAGRANCHY CARLO

LISNAGRANCHY DARINA

KNOTTOWN ROY

Code: SA4604

DOB: 15/08/2016 Ped Status: PED

Myostatin: +/- (Non-Carrier)



CALVING EASE
☒ EASY
☐ AVERAGE
☐ MATURE
☐ COWS ONLY

Available Female Sexed



Bred by: Richard Fortune, Wexford.

Genotype included in Evaluation.

Star Rating (Within Breed)	ICBF, Nov '23 Genotype Incl.	€ Value	Rel	Star Rating (Across Breed)
★★★★★	Replacement Index	€236	91% (Very High)	★★★★★
★★★★★	Terminal Index	€98	95% (Very High)	★★★★★
★★★★★	DairyBeef Index	€144	93% (Very High)	★★★★★

Expected Progeny Performance

Calving Difficulty	Beef Heifers (% 3&4)	5.1%	99% (Very High)	2019 Records
	Beef Cows (% 3&4)	1.8%	98% (Very High)	1235 Records
★★★★★	Gestation Length (days)	0.16 d	99% (Very High)	★★★★★
★★★★★	Docility (Scale)	-0.02	99% (Very High)	★★★★★
★★★★★	Age at Finishing (days)	4.29 d	98% (Very High)	★★★★★
★★★★★	Carcass Weight (Kg)	20.1 Kg	99% (Very High)	★★★★★
★★★★★	Carcass Conf (Scale 1 - 15)	1.04 Scale	99% (Very High)	★★★★★

Expected Daughter Performance

	Daughter calving diff (%)	6.32%	98% (Very High)	
★★★★★	Daughter milk (kg)	7.4 kg	93% (Very High)	★★★★★
★★★★★	Daughter calv interval (d)	-7.47 d	69% (High)	★★★★★

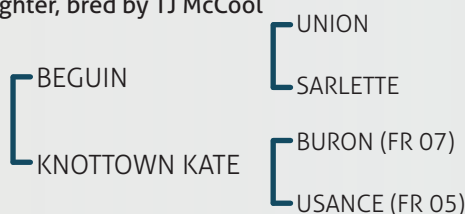
- Proven cow maker, No. 1 Saler bull available on Replacement Index.
- Roy has proven himself to be a superstar, easy calving, suitable for maidens and excellent quality males and females.
- Roy's daughters have all the traits needed for a profitable easy-care suckler cow - docility, milk, calving ability, fertility



Scan me for latest figures!



Daughter, bred by TJ McCool



BARON

Code: SA4060

DOB: 01/01/2005 Ped Status: PED

Myostatin: +/- (Non-Carrier)



CALVING EASE
☒ EASY
☐ AVERAGE
☐ MATURE
☐ COWS ONLY

Pre-Order



Saler

Bred by: GAEC Crevecoeur.

Genotype included in Evaluation.

Star Rating (Within Breed)	ICBF, Nov '23 Genotype Incl.	€ Value	Rel	Star Rating (Across Breed)
★★★★★	Replacement Index	€127	73% (High)	★★★★★
★★★★★	Terminal Index	€85	76% (High)	★★★★★
★★★★★	DairyBeef Index	€144	69% (High)	★★★★★

Expected Progeny Performance

Calving Difficulty	Beef Heifers (% 3&4)	5.7%	72% (High)	15 Records
	Beef Cows (% 3&4)	3.5%	92% (Very High)	38 Records
★★★★★	Gestation Length (days)	0.67 d	90% (Very High)	★★★★★
★★★★★	Docility (Scale)	-0.06	81% (Very High)	★★★★★
★★★★★	Age at Finishing (days)	-0.12 d	66% (High)	★★★★★
★★★★★	Carcass Weight (Kg)	20.9 Kg	86% (Very High)	★★★★★
★★★★★	Carcass Conf (Scale 1 - 15)	1 Scale	83% (Very High)	★★★★★

Expected Daughter Performance

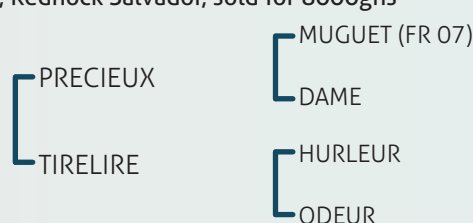
	Daughter calving diff (%)	4.94%	84% (Very High)	
★★★★★	Daughter milk (kg)	8.4 kg	82% (Very High)	★★★★★
★★★★★	Daughter calv interval (d)	-1.23 d	49% (Average)	★★★★★

- Easy calving, suitable for maidens.
- Use to produce replacements high in milk.



Son, Rednock Salvador, sold for 8000gns

Scan me for latest figures!



RYLO DUNCAN (RO)(H)

Code: SH8532

DOB: 20/04/2020 Ped Status: PED

Myostatin: E226X/+ (1 Copy)

Proof
Pending

Shorthorn



Bred by: Vivienne Ryan, Enfield, Co. Meath.

Genotype included in Evaluation.

Star Rating (Within Breed)	ICBF, Nov '23 Genotype Incl.	€ Value	Rel	Star Rating (Across Breed)
★★★★★	Replacement Index	€125	49% (Average)	★★★★★
★★★★★	Terminal Index	€50	51% (Average)	★★★★★
★★★★★	DairyBeef Index	€61	50% (Average)	★★★★★

Expected Progeny Performance

Calving Difficulty	Beef Heifers (% 3&4)	7%	61% (High)	1 Records
	Beef Cows (% 3&4)	2.4%	71% (High)	7 Records
★★★★★	Gestation Length (days)	1.85 d	60% (High)	★★★★★
★★★★★	Dolcility (Scale)	0.08	45% (Average)	★★★★★
★★★★★	Age at Finishing (days)	-7.89 d	65% (High)	★★★★★
★★★★★	Carcass Weight (Kg)	11.1 Kg	48% (Average)	★★★★★
★★★★★	Carcass Conf (Scale 1 - 15)	0.72 Scale	46% (Average)	★★★★★

Expected Daughter Performance

	Daughter calving diff (%)	7.23%	69% (High)	
★★★★★	Daughter milk (kg)	9.7 kg	46% (Average)	★★★★★
★★★★★	Daughter calv interval (d)	-0.95 d	44% (Average)	★★★★★

- Duncan's first calves were easily born and developed quickly.
- A son of the renowned Sliabhbhui Prince from a super cow family.
- Duncan is a long, powerful bull with super length and an excellent pelvis.



Rylo Duncan calf

Scan me for
latest figures!



SLIABHBHUI
PRINCE 2ND

BALLYLAFFIN MADONNA
(RO)

EIONMOR MR GUS 80C BEEF

NOHOVAL ENDA BETTY

DOON HEATHCLIFF (DRO)

BALLYLAFFIN JEMIMA GRD B (W)

FINLOUGH FINN (R)(P)

Code: SH5431

DOB: 23/04/2017 Ped Status: PED

Myostatin:

CALVING EASE
EASY
AVERAGE
MATURE
COWS ONLY



Bred by: Ben Lang, Ballinacarrow, Co. Sligo

Genotype included in Evaluation.

Star Rating (Within Breed)	ICBF, Nov '23 Genotype Incl.	€ Value	Rel	Star Rating (Across Breed)
★★★★★	Replacement Index	€166	74% (High)	★★★★★
★★★★★	Terminal Index	€90	83% (Very High)	★★★★★
★★★★★	DairyBeef Index	€111	80% (Very High)	★★★★★

Expected Progeny Performance

Calving Difficulty	Beef Heifers (% 3&4)	8.2%	76% (High)	20 Records
	Beef Cows (% 3&4)	2.8%	91% (Very High)	90 Records
★★★★★	Gestation Length (days)	-1.56 d	94% (Very High)	★★★★★
★★★★★	Dolcility (Scale)	0.16	89% (Very High)	★★★★★
★★★★★	Age at Finishing (days)	-6.85 d	86% (Very High)	★★★★★
★★★★★	Carcass Weight (Kg)	21.7 Kg	93% (Very High)	★★★★★
★★★★★	Carcass Conf (Scale 1 - 15)	0.75 Scale	91% (Very High)	★★★★★

Expected Daughter Performance

	Daughter calving diff (%)	4.92%	82% (Very High)	
★★★★★	Daughter milk (kg)	9.7 kg	66% (High)	★★★★★
★★★★★	Daughter calv interval (d)	-3.12 d	48% (Average)	★★★★★

- Use to produce efficient, milky replacements with good docility.
- 2nd highest Shorthorn bull available on Replacement Index.
- Semen limited.



Sire, Ballyart Lucky ET RED P

Scan me for
latest figures!



BALLYART LUCKY ET (RED)

LLANARTH CAROL (P)

WAUKARU PATENT 8161 ET

SBR DORA 228

TOFTS RIGGER S273 (P)

LLANARTH TRUDY (H)

NAPOLEON OF UPSALL Pp

Code: SH6658

DOB:27/02/2019
Myostatin:

Pedigree Status: PED

CALVING EASE
EASY
AVERAGE
MATURE COWS ONLY

Available Female Sexed

Pre-Order



Shorthorn

Bred by: Upsall Castle Farms, UK

Genotype included in Evaluation.

Star Rating (Within Breed)	Index ICBF, Nov'23 <small>Genotype Incl.</small>	€ Value	Rel	Star Rating (Across Breed)
★ ★ ★ ★ ★	Replacement Index	€79	48% (Average)	★ ★ ★ ★ ★
★ ★ ★ ★ ★	Terminal Index	€29	58% (Average)	★ ★ ★ ★ ★
★ ★ ★ ★ ★	DairyBeef Index	€70	57% (Average)	★ ★ ★ ★ ★
Expected Progeny Performance				
Calving Difficulty	Beef Heifers (% 3&4)	8.9%	81% (Very)	45 Records
	Beef Cows (% 3&4)	4.3%	91% (Very)	106 Records
★ ★ ★ ★ ★	Gestation Length (days)	0.73 days	93% (Very)	★ ★ ★ ★ ★
★ ★ ★ ★ ★	Dolcility (Scale)	0.16	77% (High)	★ ★ ★ ★ ★
★ ★ ★ ★ ★	Age at Finishing (days)	-6.44 days	55% (Average)	★ ★ ★ ★ ★
★ ★ ★ ★ ★	Carcass Weight (kg)	10.2 Kg	55% (Average)	★ ★ ★ ★ ★
★ ★ ★ ★ ★	Carcass Conf. (Scale 1-15)	0.42 Scale	46% (Average)	★ ★ ★ ★ ★
Expected Daughter Performance				
★ ★ ★ ★ ★	Daughter calving diff (% 3&4)	4.56%	83% (Very)	★ ★ ★ ★ ★
	Daughter milk (kg)	9.3	33% (Low)	
	Daughter calving interval (d)	-1.46 days	34% (Low)	

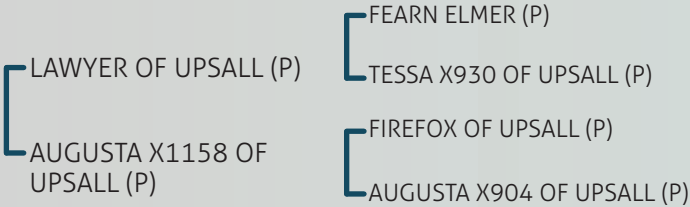


Daughter, Creaga Violet winner of class Tullamore '23



Daughter, Creaga Una, first prize winner Grange Show '23

- A fantastic example of the shorthorn breed from the Upsall herd in the UK.
- Available sexed female.
- Upsall progeny have excelled in the show ring oozing style and class.



Scan me for latest figures!



TUBRIDMORE TWOMEY ET

Code: AA8472

CALVING EASE
☒ EASY
☐ AVERAGE
☐ MATURE
 CONSOLY

DOB:15/08/2020

Pedigree Status: PED

Myostatin: +/- (Non-Carrier)

Aberdeen Angus



Bred by: Denis Twomey, Causeway, Co Kerry

Genotype included in Evaluation.

Star Rating (Within Breed)	Index ICBF, Nov'23 Genotype Incl.	€ Value	Rel	Star Rating (Across Breed)
★★★★★	Replacement Index	€99	50% (Average)	★★★★★
★★★★★	Terminal Index	€67	56% (Average)	★★★★★
★★★★★	DairyBeef Index	€148	64% (High)	★★★★★

Expected Progeny Performance

Calving Difficulty	Beef Heifers (% 3&4)	3.1%	59% (Average)	2 Records
	Beef Cows (% 3&4)	1.5%	70% (High)	8 Records
★★★★★	Gestation Length (days)	-3.11 days	97% (Very)	★★★★★
★★★★★	Docity (Scale)	-0.02	42% (Average)	★★★★★
★★★★★	Age at Finishing (days)	-13.87 days	62% (High)	★★★★★
★★★★★	Carcass Weight (kg)	7.9 Kg	54% (Average)	★★★★★
★★★★★	Carcass Conf. (Scale 1-15)	0.34 Scale	48% (Average)	★★★★★

Expected Daughter Performance

	Daughter calving diff (% 3&4)	6.78%	67% (High)	
★★★★★	Daughter milk (kg)	5.5	43% (Average)	★★★★★
★★★★★	Daughter calving interval (d)	-2.65 days	40% (Average)	★★★★★

- Twomey has developed into an outstanding example of the Angus breed.
- He is long and correct with tremendous thickness through the body.
- Easy calving, suitable for pedigree maidens.



Dam, Tubridmore Twomey



Twomey daughter, Denis Twomey, Co. Kerry

BELVIN REBEL

F A R KRUGERRAND 410H

BELVIN GEORGINA

BELVIN LADY BLOSSOM
64'04

BELVIN MERCEDES 32'02

BELVIN LADY BLOSSOM 40'01

Scan me for
latest figures!



HW LORD HORATIO V538

Code: AA6682

CALVING EASE
☐ EASY
☒ AVERAGE
☐ MATURE COWS ONLY

DOB: 03/03/2019

Pedigree Status: PED

Myostatin: +/- (Non-Carrier)

Available Male Sexed



MacG
APR '20



Aberdeen Angus

Bred by: HW Angus, Scotland

Genotype included in Evaluation.

Star Rating (Within Breed)	Index ICBF, Nov'23 <small>Genotype Incl.</small>	€ Value	Rel	Star Rating (Across Breed)
★★★★★	Replacement Index	€97	63% (High)	★★★★★
★★★★★	Terminal Index	€92	87% (Very)	★★★★★
★★★★★	DairyBeef Index	€152	90% (Very)	★★★★★
Expected Progeny Performance				
Calving Difficulty	Beef Heifers (% 3&4)	5.6%	63% (High)	10 Records
	Beef Cows (% 3&4)	3.2%	88% (Very)	82 Records
★★★★★	Gestation Length (days)	-2.48 days	99% (Very)	★★★★★
★★★★★	Docility (Scale)	0.03	72% (High)	★★★★★
★★★★★	Age at Finishing (days)	-22.92 days	90% (Very)	★★★★★
★★★★★	Carcass Weight (Kg)	12.8 Kg	95% (Very)	★★★★★
★★★★★	Carcass Conf. (Scale 1-15)	0.91 Scale	93% (Very)	★★★★★
Expected Daughter Performance				
	Daughter calving diff (% 3&4)	3.96%	83% (Very)	
★★★★★	Daughter milk (Kg)	6.7	40% (Average)	★★★★★
★★★★★	Daughter calving interval (d)	-1.62 days	40% (Average)	★★★★★



Daughter, Mogeely Flora Y858 sold €7400 at Mogeely reduction sale



Horatio daughter, 1st prize winner, Cork Show '23

- The ultimate Angus sire with short gestation, excellent weight for age and shape.
- Excellent for Age at Slaughter.
- The most used AA sire in Ireland in 2023.

NETHERTON KRACKER P790

JERUSALEM LADY HEATHER P298

S A V BRAVE 8320

NETHERTON KARAMA K574

RAWBURN JULIO ERIC L249

JERSULEM LADY HEATHER F106

Scan me for latest figures!



COOLRAIN PATRIARCH

Code: AA5280

DOB: 20/08/2017 Ped Status: PED
Myostatin: +/- (Non-Carrier)



CALVING EASE
EASY
AVERAGE
MATURE
COWS ONLY



Bred by: Nigel Peavoy, Portlaois, Co. Laois.

Genotype included in Evaluation.

Star Rating (Within Breed)	ICBF, Nov '23 Genotype Incl.	€ Value	Rel	Star Rating (Across Breed)
★★★★★	Replacement Index	€208	77% (High)	★★★★★
★★★★★	Terminal Index	€94	93% (Very High)	★★★★★
★★★★★	DairyBeef Index	€141	94% (Very High)	★★★★★

Expected Progeny Performance

Calving Difficulty	Beef Heifers (% 3&4)	6%	89% (Very High)	75 Records
	Beef Cows (% 3&4)	2.7%	94% (Very High)	172 Records
★★★★★	Gestation Length (days)	-1.8 d	99% (Very High)	★★★★★
★★★★★	Docility (Scale)	0.06	89% (Very High)	★★★★★
★★★★★	Age at Finishing (days)	-15.5 d	98% (Very High)	★★★★★
★★★★★	Carcass Weight (Kg)	8.6 Kg	99% (Very High)	★★★★★
★★★★★	Carcass Conf (Scale 1 - 15)	0.66 Scale	99% (Very High)	★★★★★

Expected Daughter Performance

	Daughter calving diff (%)	4.07%	89% (Very High)	
★★★★★	Daughter milk (kg)	5.9 kg	58% (Average)	★★★★★
★★★★★	Daughter calv interval (d)	-6.15 d	53% (Average)	★★★★★

- Patriarch is a proven all-rounder.
- Progeny have good weight for age, shape and finish early.
- Excellent docility.



Scan me for latest figures!



Son, Coolrain Victory, Senior Male Champion,
€5100 at Irish Angus Elite Show

S A V NET WORTH 4200

BOVA LORD
BLACKWOOD

BELVIN LADY BLOSSOM 64'04

COOLRAIN MEGAN

ROSEMEAD KARONA J957

COOLRAIN FLORRIE

GOULDING MAN OH MAN

Code: AA4087

DOB: 14/03/2015 Ped Status: PED
Myostatin: NT821/+ (1 Copy)



CALVING EASE
EASY
AVERAGE
MATURE
COWS ONLY



Bred by: Matthew Goulding, Ballyduff, Co. Kerry.

Genotype included in Evaluation.

Star Rating (Within Breed)	ICBF, Nov '23 Genotype Incl.	€ Value	Rel	Star Rating (Across Breed)
★★★★★	Replacement Index	€132	93% (Very High)	★★★★★
★★★★★	Terminal Index	€126	95% (Very High)	★★★★★
★★★★★	DairyBeef Index	€123	95% (Very High)	★★★★★

Expected Progeny Performance

Calving Difficulty	Beef Heifers (% 3&4)	8.8%	94% (Very High)	227 Records
	Beef Cows (% 3&4)	4.6%	99% (Very High)	1772 Records
★★★★★	Gestation Length (days)	1.32 d	99% (Very High)	★★★★★
★★★★★	Docility (Scale)	0.09	99% (Very High)	★★★★★
★★★★★	Age at Finishing (days)	-18.58 d	99% (Very High)	★★★★★
★★★★★	Carcass Weight (Kg)	25.2 Kg	99% (Very High)	★★★★★
★★★★★	Carcass Conf (Scale 1 - 15)	1.12 Scale	99% (Very High)	★★★★★

Expected Daughter Performance

	Daughter calving diff (%)	6.09%	97% (Very High)	
★★★★★	Daughter milk (kg)	3.1 kg	92% (Very High)	★★★★★
★★★★★	Daughter calv interval (d)	-5.81 d	77% (High)	★★★★★

- Man Oh Man is a proven high performance sire.
- Top 1% of the breed for Terminal Index, Carcass Weight & Carcass Conformation.
- Excellent for Age at Slaughter, on average Man Oh Man progeny finish 18 days earlier than their herd mates.



Scan me for latest figures!



Champion Angus, Carrick on Shannon,
Fat Stock Sale '21

ABBERTON DAZZLE G160

ABBERTON EMINEM
M285

ABBERTON ERICA H187

GOULDING GRACEFUL
PATRIOT ET

GOULDING EXTRA ET

DARIMA PATRIOT Z082

KNOCKMOUNTAGH VALENTINE

Code: AA9661

DOB: 16/01/2022 Ped Status: PED

Myostatin: +/- (Non-Carrier)

Test



Bred by: Eamon & John McKiernan, Monasterboice, Co. Louth. Genotype included in Evaluation.

Star Rating (Within Breed)	ICBF, Nov '23 Genotype Incl.	€ Value	Rel	Star Rating (Across Breed)
★★★★★	Replacement Index	€151	44% (Average)	★★★★★
★★★★★	Terminal Index	€95	47% (Average)	★★★★★
★★★★★	DairyBeef Index	€153	49% (Average)	★★★★★

Expected Progeny Performance

Calving Difficulty	Beef Heifers (% 3&4)	4.4%	52% (Average)	0 Records
	Beef Cows (% 3&4)	1.5%	63% (High)	0 Records
★★★★★	Gestation Length (days)	-2.51 d	59% (Average)	★★★★★
★★★★★	Dolcility (Scale)	0	39% (Low)	★★★★★
★★★★★	Age at Finishing (days)	-12.42 d	62% (High)	★★★★★
★★★★★	Carcass Weight (kg)	13.1 Kg	44% (Average)	★★★★★
★★★★★	Carcass Conf (Scale 1 - 15)	0.77 Scale	44% (Average)	★★★★★

Expected Daughter Performance

	Daughter calving diff (%)	5.8%	60% (High)	
★★★★★	Daughter milk (kg)	8.3 kg	37% (Low)	★★★★★
★★★★★	Daughter calv interval (d)	-4.5 d	36% (Low)	★★★★★

- Valentine was selected for his easy calving, short gestation, high performance pedigree.
- His sire Knockmountagh Poker has exceptionally short gestation -4.32 days.
- Valentine comes from a proven cow family at Knockmountagh.



Scan me for latest figures!



Sire, Knockmountagh Poker

OAKCHURCH DE ADMIRAL P164

KNOCKMOUNTAGH MIST

KNOCKMOUNTAGH RONALDO

KNOCKMOUNTAGH PANSY

KNOCKMOUNTAGH POKER

KNOCKMOUNTAGH TINA 888

SHANAWAY VENGABUS

Code: AA9607

DOB: 10/03/2022 Ped Status: PED

Myostatin: +/- (Non-Carrier)

Test



Bred by: Stephen Carmody VS, Tarbert, Co. Kerry. Genotype included in Evaluation.

Star Rating (Within Breed)	ICBF, Nov '23 Genotype Incl.	€ Value	Rel	Star Rating (Across Breed)
★★★★★	Replacement Index	€154	49% (Average)	★★★★★
★★★★★	Terminal Index	€141	50% (Average)	★★★★★
★★★★★	DairyBeef Index	€185	49% (Average)	★★★★★

Expected Progeny Performance

Calving Difficulty	Beef Heifers (% 3&4)	4.4%	58% (Average)	0 Records
	Beef Cows (% 3&4)	1.9%	70% (High)	0 Records
★★★★★	Gestation Length (days)	-2.34 d	46% (Average)	★★★★★
★★★★★	Dolcility (Scale)	-0.04	46% (Average)	★★★★★
★★★★★	Age at Finishing (days)	-21.57 d	65% (High)	★★★★★
★★★★★	Carcass Weight (kg)	19.9 Kg	47% (Average)	★★★★★
★★★★★	Carcass Conf (Scale 1 - 15)	0.74 Scale	45% (Average)	★★★★★

Expected Daughter Performance

	Daughter calving diff (%)	4.65%	67% (High)	
★★★★★	Daughter milk (kg)	6.9 kg	49% (Average)	★★★★★
★★★★★	Daughter calv interval (d)	-5.61 d	42% (Average)	★★★★★

- Vengabus was selected for his performance, shape and short gestation pedigree.
- His sire Te Mania Berkley is one of the best bulls ever to deliver on performance and calving ease.
- The cow family is very short gestation.



Scan me for latest figures!



Sire, Te Mania Berkley

TE MANIA YORKSHIRE Y437

TE MANIA LOWAN Z53 ET

NIGHTINGALE EL PASO

TUBRIDMORE JUDY

TE MANIA BERKLEY B1

TUBRIDMORE MARIAN 573

INTELAGRI MATTEO E.T.

Code: AA4089
DOB: 03/06/2015 Ped Status: PED
Myostatin: +/- (Non-Carrier)

REPLACEMENT

FINISHING

CALVING EASE

☒ EASY

☒ AVERAGE

☒ MATURE

☒ COWS ONLY



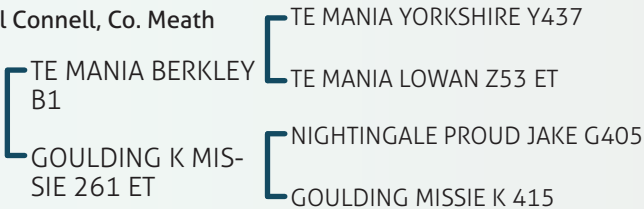
Bred by: Robert Beattie, Manor Kilbride, Co. Wicklow. Genotype included in Evaluation.

Star Rating (Within Breed)	ICBF, Nov '23 Genotype Incl.	€ Value	Rel	Star Rating (Across Breed)
★★★★★	Replacement Index	€225	93% (Very High)	★★★★★
★★★★★	Terminal Index	€111	95% (Very High)	★★★★★
★★★★★	DairyBeef Index	€172	95% (Very High)	★★★★★
Expected Progeny Performance				
Calving Difficulty	Beef Heifers (% 3&4)	3.9%	99% (Very High)	2557 Records
	Beef Cows (% 3&4)	1.6%	99% (Very High)	1591 Records
★★★★★	Gestation Length (days)	-3.62 d	99% (Very High)	★★★★★
★★★★★	Docility (Scale)	0.02	99% (Very High)	★★★★★
★★★★★	Age at Finishing (days)	-18.14 d	99% (Very High)	★★★★★
★★★★★	Carcass Weight (Kg)	9.6 Kg	99% (Very High)	★★★★★
★★★★★	Carcass Conf (Scale 1 - 15)	0.79 Scale	99% (Very High)	★★★★★
Expected Daughter Performance				
	Daughter calving diff (%)	7.05%	98% (Very High)	
★★★★★	Daughter milk (kg)	7 kg	94% (Very High)	★★★★★
★★★★★	Daughter calv interval (d)	-9.34 d	74% (High)	★★★★★

- A proven superstar for both Maternal and Terminal traits.
- Matteo is the perfect choice for pedigree breeders. Top 1% of the breed on DBI.
- Daughters are exceptional; correct, feminine and milky with excellent udders and teats.



Daughter, All Ireland Angus Champion,
Karol Connell, Co. Meath



Scan me for latest figures!



TE MANIA NEBO N424

Code: AA7452
DOB: 07/08/2017 Ped Status: PED
Myostatin: +/- (Non-Carrier)

CALVING EASE

☒ EASY

☒ AVERAGE

☒ MATURE

☒ COWS ONLY



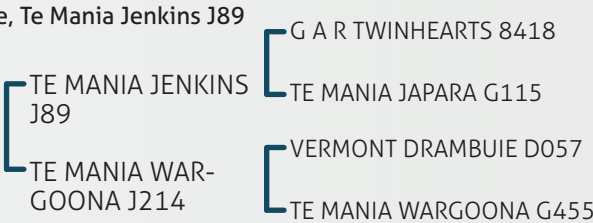
Bred by: Te Mania Stud, Australia. Genotype included in Evaluation.

Star Rating (Within Breed)	ICBF, Nov '23 Genotype Incl.	€ Value	Rel	Star Rating (Across Breed)
★★★★★	Replacement Index	€154	35% (Low)	★★★★★
★★★★★	Terminal Index	€98	37% (Low)	★★★★★
★★★★★	DairyBeef Index	€148	39% (Low)	★★★★★
Expected Progeny Performance				
Calving Difficulty	Beef Heifers (% 3&4)	4.3%	46% (Average)	2 Records
	Beef Cows (% 3&4)	1.5%	56% (Average)	1 Records
★★★★★	Gestation Length (days)	-3.21 d	56% (Average)	★★★★★
★★★★★	Docility (Scale)	0.06	30% (Low)	★★★★★
★★★★★	Age at Finishing (days)	-16.97 d	53% (Average)	★★★★★
★★★★★	Carcass Weight (Kg)	9.5 Kg	31% (Low)	★★★★★
★★★★★	Carcass Conf (Scale 1 - 15)	0.65 Scale	31% (Low)	★★★★★
Expected Daughter Performance				
	Daughter calving diff (%)	4.96%	52% (Average)	
★★★★★	Daughter milk (kg)	8.7 kg	31% (Low)	★★★★★
★★★★★	Daughter calv interval (d)	-3.67 d	31% (Low)	★★★★★

- Nebo comes from the same breeding programme as Te Mania Berkley.
- He has many of the traits that made Berkley famous; calving ease, short gestation, good performance.
- His dam is an outstanding Te Mania Emperor daughter.



Sire, Te Mania Jenkins J89



Scan me for latest figures!



GOULDINGPOLL 1 NIJINSKY PP

DOB:18/12/2021

Pedigree Status: PED

Code: HE9382

Myostatin: +/- (Non-Carrier)



Hereford



Bred by: Matthew Goulding, Ballyduff, Co. Kerry

Genotype included in Evaluation.

Star Rating (Within Breed)	Index ICBF, Nov'23 Genotype Incl.	€ Value	Rel	Star Rating (Across Breed)
★★★★★	Replacement Index	€103	47% (Average)	★★★★★
★★★★★	Terminal Index	€101	48% (Average)	★★★★★
★★★★★	DairyBeef Index	€143	48% (Average)	★★★★★
Expected Progeny Performance				
Calving Difficulty	Beef Heifers (% 3&4)	4.9%	53% (Average)	0 Records
	Beef Cows (% 3&4)	2.2%	65% (High)	0 Records
★★★★★	Gestation Length (days)	-1.35 days	46% (Average)	★★★★★
★★★★★	Docity (Scale)	0.21	44% (Average)	★★★★★
★★★★★	Age at Finishing (days)	-16.61 days	62% (High)	★★★★★
★★★★★	Carcass Weight (Kg)	12.0 Kg	46% (Average)	★★★★★
★★★★★	Carcass Conf. (Scale 1-15)	0.73 Scale	45% (Average)	★★★★★
Expected Daughter Performance				
	Daughter calving diff (% 3&4)	4.63%	61% (High)	
★★★★★	Daughter milk (Kg)	6.1	46% (Average)	★★★★★
★★★★★	Daughter calving interval (d)	-4.11 days	38% (Low)	★★★★★

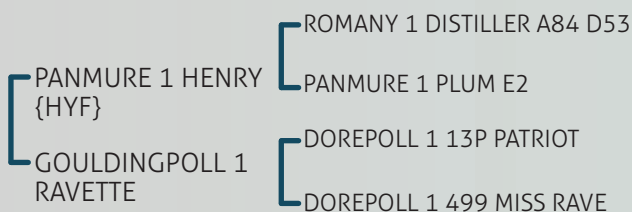


Full sister, Gouldinpoll 1 Ravette 1262



Sire, Panmure 1 Henry

- Nijinsky has it all, perfect structure, excellent muscle development, style & colour.
- Impeccably bred; his pedigree is a who's who of great sires and females.
- Nijinsky is full brother to the Irish record priced female who sold at the 2022 Genetic Gems sale.



Scan me for latest figures!



ALLOWDALE RAMBO 475

Code: HE4344

DOB: 27/06/2014

Pedigree Status: PED

Myostatin: +/- (Non-Carrier)



REPLACEMENT



FINISHING

CALVING EASE

☐ EASY
☒ AVERAGE
☐ MATURE COWS ONLY

Hereford



Bred by: Anne Pounds & Liam Philpott, Kanturk, Co. Cork

Genotype included in Evaluation.

Star Rating (Within Breed)	Index ICBF, Nov'23 Genotype Incl.	€ Value	Rel	Star Rating (Across Breed)
★★★★★	Replacement Index	€108	85% (Very)	★★★★★
★★★★★	Terminal Index	€58	92% (Very)	★★★★★
★★★★★	DairyBeef Index	€70	92% (Very)	★★★★★

Expected Progeny Performance

Calving Difficulty	Beef Heifers (% 3&4)	9.4%	86% (Very)	39 Records
	Beef Cows (% 3&4)	4.0%	96% (Very)	344 Records
★★★★★	Gestation Length (days)	-1.88 days	99% (Very)	★★★★★
★★★★★	Docity (Scale)	0.19	93% (Very)	★★★★★
★★★★★	Age at Finishing (days)	-15.47 days	96% (Very)	★★★★★
★★★★★	Carcass Weight (Kg)	13.2 Kg	98% (Very)	★★★★★
★★★★★	Carcass Conf. (Scale 1-15)	0.69 Scale	98% (Very)	★★★★★

Expected Daughter Performance

	Daughter calving diff (% 3&4)	7.43%	92% (Very)	
★★★★★	Daughter milk (kg)	9.7	83% (Very)	★★★★★
★★★★★	Daughter calving interval (d)	-6.60 days	60% (High)	★★★★★

- Rambo 475 is a proven superior sire for both Maternal and Terminal traits.
- The perfect bull to improve carcass weight, shape and milk.
- No. 1 HE sire available for milk.



Son, Cavehill Max, Top price bull at the IHCS Premier Sale Spring '22



Son, Tramona Oscar sold for €5100 at the IHCS Sale in Nenagh, May '23

ALLOWDALE RAMBO ET {HYF}

ALLOWDALE PRETTYMAID 275

GH RAMBO 279R

GH PREFORMANCE PASSION 1265

BOWMONT STORM A584

BALLEEN PRETTYMAID 16TH

Scan me for latest figures!



Beefing up your Business www.progressivegenetics.ie

MIDFORD 1 WHIZZBANG PP

DOB:07/01/2022 Pedigree Status: PED Code: HE9610
Myostatin: +/- (Non-Carrier)



Hereford

Bred by: Will Awan, UK

Genotype included in Evaluation.

Star Rating (Within Breed)	Index ICBF, Nov'23	Genotype Incl.	€ Value	Rel	Star Rating (Across Breed)
★★★★★	Replacement Index		€156	42% (Average)	★★★★★
★★★★★	Terminal Index		€101	45% (Average)	★★★★★
★★★★★	DairyBeef Index		€105	44% (Average)	★★★★★
Expected Progeny Performance					
Calving Difficulty	Beef Heifers (% 3&4)		8.0%	47% (Average)	0 Records
	Beef Cows (% 3&4)		3.6%	62% (High)	0 Records
★★★★★	Gestation Length (days)		-1.50 days	43% (Average)	★★★★★
★★★★★	Docility (Scale)		0.14	39% (Low)	★★★★★
★★★★★	Age at Finishing (days)		-17.96 days	61% (High)	★★★★★
★★★★★	Carcass Weight (kg)		12.0 Kg	43% (Average)	★★★★★
★★★★★	Carcass Conf. (Scale 1-15)		0.56 Scale	42% (Average)	★★★★★
Expected Daughter Performance					
	Daughter calving diff (% 3&4)		4.58%	59% (Average)	
★★★★★	Daughter milk (kg)		7.1	37% (Low)	★★★★★
★★★★★	Daughter calving interval (d)		-5.78 days	34% (Low)	★★★★★



Whizzbang HE9610



Sire, Kinglee 1 Hero HE4046

- Whizzbang is a long, correct bull with excellent muscle definition and great locomotion.
- His dam, sired by Romany 1 Frisky, was Junior Champion at the Great Yorkshire and Highland show.
- Whizzbang is bred to improve Terminal and Maternal traits.

KINGLEE 1 HERO {HYF}

MORALEE 1 KATE 2ND

DOREPOLL 1 93N NATIONWIDE

COSTHORPE 1 SADIE 149

ROMANY 1 FRISKY A84 F57

MORALEE 1 KATE

Scan me for latest figures!



INTELAGRI 1 GOLD RUSH ET Pp

DOB: 20/05/2020

Myostatin: +/- (Non-Carrier)

Pedigree Status: PED

Code: HE8511



CALVING EASE
☒ EASY
☒ AVERAGE
☒ MATURE COWS ONLY

Hereford



Bred by: Robert Beattie, Manor Kilbride, Co. Wicklow

Genotype included in Evaluation.

Star Rating (Within Breed)	Index ICBF, Nov'23 Genotype Incl.	€ Value	Rel	Star Rating (Across Breed)
★★★★★★	Replacement Index	€116	49% (Average)	★★★★★★★
★★★★★★	Terminal Index	€96	52% (Average)	★★★★★★★
★★★★★★	DairyBeef Index	€133	58% (Average)	★★★★★★★
Expected Progeny Performance				
Calving Difficulty	Beef Heifers (% 3&4)	8.0%	54% (Average)	0 Records
	Beef Cows (% 3&4)	5.1%	67% (High)	4 Records
★★★★★★	Gestation Length (days)	-2.19 days	86% (Very)	★★★★★★★
★★★★★★	Docility (Scale)	0.16	45% (Average)	★★★★★★★
★★★★★★★	Age at Finishing (days)	-17.86 days	64% (High)	★★★★★★★
★★★★★★	Carcass Weight (Kg)	12.8 Kg	47% (Average)	★★★★★★★
★★★★★★	Carcass Conf. (Scale 1-15)	0.79 Scale	46% (Average)	★★★★★★★
Expected Daughter Performance				
	Daughter calving diff (% 3&4)	5.15%	64% (High)	
★★★★★★	Daughter milk (Kg)	6.1	45% (Average)	★★★★★★★
★★★★★★	Daughter calving interval (d)	-5.11 days	39% (Low)	★★★★★★★



Gouldingpoll-1 Gold Spice



Dam, Barwise 1 Rambling Rosie

- Gold Rush is bred for high carcass weight & conformation.
- He is a full brother to Goldspice who is a proven high performance sire.
- The first calves look very promising with excellent shape.

ROMANY 1 DISTILLER A84 D53
 PANMURE 1 HENRY {HYF}
 PANMURE 1 PLUM E2
 BARWISE 1 RAMBLING ROSIE 2267
 BARWISE 1 WELLINGTON ET (ARG)
 BARWISE 1 ROSIE ET (IMP ARG)

Scan me for latest figures!



ALSO AVAILABLE CHECK WEBSITE FOR DETAILS & PRICING, ALL BELOW ARE PRE-ORDER

Dexter



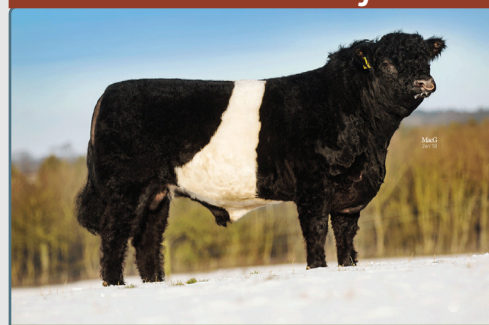
DUFFRYN BEVIS DX4464

Dexter



STARGATE ROBIN THE HOOD DX2432

Belted Galloway



COULMONY MAXIMUS S3557

Highland



K2 OF CLADICH HI7557

Longhorn



CARREG UTAHRACTOR LH8499

Galloway



BEN LOMOND MORDHU S3212

Piedmontese



SANDYMOUNT NORDIC PI4566

Parthenaise



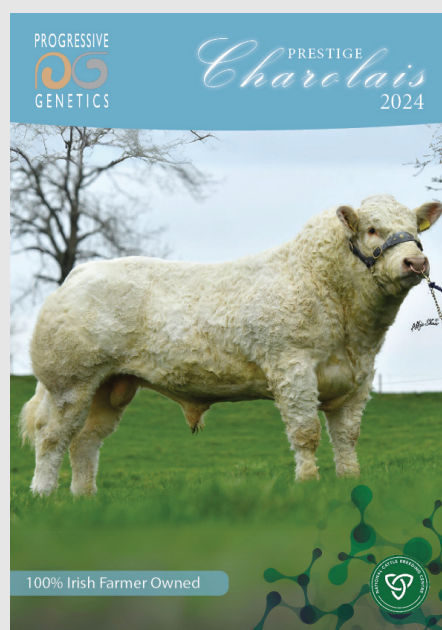
KILGULBIN PARTHENAISE LOGAN PT4570

Wagyu



EDENBANE GLENISLA FUJISAWA WA2409

OTHER CATALOGUES CHECK OUR WEBSITE AND PRESTIGE CATALOGUES FOR ADDITIONAL BULLS



MAXIMISE SUCCESS OF AI IN SUCKLER COWS

1. Cow must have an easy calving.

Match your cows to sires that they are capable of calving easily. Difficult calvings is one of the biggest causes of cows being slow to return to service. Heifers that are calving at 2 years of age need an exceptionally easy calving sire.

2. Break the strong maternal- offspring bond

Cows must cycle within 55 days of calving to achieve one calf per cow per year. Breaking the maternal bond will reduce the time to first heat by 4 weeks. 80% of cows will exhibit a fertile heat by day 45, however, about 10% will not respond. These are often the cows in poor BCS.

The easiest way to break the bond is to separate the calves from the cows from day 30, only allowing access for twice daily suckling. This is a superb way of getting Autumn calvers and 1st calvers cycling. For the autumn calving cows indoors, a door in the creep area to an outside paddock can be opened to allow the calves out to grass.

In addition to the cows cycling sooner, the calves are out most of the time resulting in reduced disease issues, less bedding used and heavier calves at weaning. A winner all around.

3. Nutrition and BCS at calving

The higher the BCS at calving the quicker the cow will resume cycling post calving. A BCS of 2.5+ is ideal.

Extra feeding after calving will not compensate for poor BCS at calving; good nutrition is necessary pre and post calving. Cows on poor BCS e.g. 1.75 will not cycle until 71+ days after calving while cows in good BCS 3.0+ will be cycling by day 55.

Avoid fluctuations in feed supply around breeding. Keep cows on a rising plane of nutrition.

Mineral supplementation is necessary to supplement the silage ingested

4. Health

Discuss a herd health strategy with your Vet pre-breeding.

Ensure cows receive all vaccinations 3 weeks prior to breeding. Ensure cows are dosed for parasites if necessary - Fluke & Worms prior to breeding.

5. Avoid stress around the time of breeding

Ensure cows are in a socially stable group. Avoid mixing cows from different groups during the breeding season especially 1st calved heifers.

6. Requirements for cows to express normal heat activity

Adequate space is necessary to allow mounting for heat detection. Increased stocking density indoors reduces heat expression and more false heats will occur.

Mounting activity and duration of mounting is reduced where under foot conditions are slippery and when cattle are on concrete.

7. Timing of insemination to maximise conception rates

The best time to inseminate is when animals are in standing heat and up to 12 hours after the end of standing heat.

Avoid inseminating cows that are more than 12 hours after the end of standing heat.

Heat detection aids are crucial for accurate and efficient heat detection.

Once a day insemination works well. For example, if the technician is coming into your yard each day at 12 noon, inseminate all the cows you have seen up to 12 noon that day.

Speak to your technician and discuss your routine.

When synchronising cows and heifers, plan the time of insemination in advance with your technician and strictly adhere to the programme.

Insemination is a job requiring precision to maximise conception rate.

Ensure adequate facilities are available and help the technician especially where more than one animal is to be inseminated.

8. Biosecurity - it's everybody's responsibility!

MAXIMISE SUCCESS OF AI IN MAIDEN HEIFERS

1. Ensure that heifers meet the recommended target weights at breeding.

- This ensures that the majority of heifers are cycling
- This ensures that heifers are well developed at calving and will calve easily.
- This ensures that heifers are more likely to go in-calf within 60-80 days after their 1st calving.

Recommended target weight at 14 months of age

Breed Target	Target (KG)	ADG birth to 14 months (Kg/day)
Angus X	370	0.77
Hereford X	370	0.77
Simmental X	400	0.85
Limousin X	420	0.88
Charolais X	430	0.9

HEAT DETECTION AIDS AVAILABLE



Chinball Harness

Chinball harness €228
Paint €109/gallon

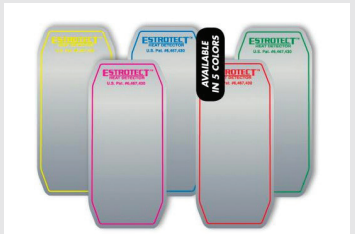
Brush Tail Paint

€14
Choice of colours



Estroprotect Rub Off patches

Pack of 10 €22
Pack of 50 €90



MooCall Heat

Collar, 50 tags,
data cost in year 1
Was €1500
now €999
(incl VAT)
Annual cost from year 2



BENEFITS OF SYNCHRONISATION

1. All animal inseminated on the one day without any heat detection.
2. Repeats will occur over a 2-4 day period, making heat detection much easier as more animals are on heat at the one time. You will know the expected days of heats in advance.
3. Cows calved 35 days and not cycling when synchronised will resume cyclicity, provided nutrition and management is good. This will increase the 3 and 6 week calving rate.
4. A compact group of cows/heifers can be presented for scanning and the empty cows/heifers can be synchronised again or marked for heat detection.
5. A compact calf crop makes management from calving to weaning easier and facilitates sale.
6. Compacting calving allows animals to be grouped together e.g. all 1st calvers can be grouped together for extra feeding.
7. Even though you will inseminate animals in one day, they will calve over a two-week period.

Note: When heats are due in a group of cows indoors, it is best to lock the calves away from the cows in the creep area to avoid them getting injured. It is also prudent to take away the vasectomised bull at this time of maximum activity to avoid him getting injured.



BEEF COWS - SYNCHRONISATION FOR COWS FIXED TIMED AI AT A PREDETERMINED TIME. NO HEAT DETECTION. 3 HANDLINGS IN THE CRUSH

Monday 1st	Day 0	AM	Insert PRID or CIDR* and inject GnRH
Monday 8th	Day 7	AM	Inject PG & eCG & Remove PRID/ CIDR*
Thursday 11th	Day 10	AM to noon	AI all cows and inject GnRH (72 hours after PG injection)

- This is a superb programme for herds that wish to tighten and advance the mean calving date & maximises pregnancy rates as 100% submission is achieved.
- Superb to bring forward late calvers, however ensure cows are calved 35 days, have a BCS of 2.75+ and Intakes are maximised.

BEEF HEIFERS - COST EFFECTIVE REGIME & HIGH CONCEPTION RATES - AI AT OBSERVED HEAT. 12 DAY HEAT DETECTION

Monday 1st	Day 0 - Day 7	AI on observed heat - should have 1/3 detected at end of week.
Monday 8th	Day 8	PG to heifers not detected in heat. Only inject if 1/3 bred already - otherwise investigate
Wednesday 10th / Thursday 11th	Day 10 - Day 11	AI on detected heat. Majority on 48-72 hours post PG injection

- If 1/3 are not bred in the 1st week avoid injecting with PG as the heifers are not cycling- due to their weight, plane of nutrition, pregnancy or heat detection.
- For those that are not observed- reinject PG 11 days after the 1st injection.
- If releasing a bull after AI, watch carefully for the repeats to ensure he is not overworked in those 2-4 days- prudent to use AI for those 2-4 days.

BEEF HEIFERS - SYNCHRONISATION - FIXED TIMED AI AT A PREDETERMINED TIME. NO HEAT DETECTION. 4 HANDLINGS IN THE CRUSH

Monday 1st	Day 0	AM or PM	Insert PRID or CIDR* & Inject GnRH
Saturday 6th	Day 5	AM or PM	Inject PG
Sunday 7th	Day 6	AM or PM	Inject PG and remove PRID or CIDR*
Tuesday 9th	Day 8	AM or PM	Inject GnRH and fixed timed AI (72 hours after PG injection)

- Decide at the beginning of the protocol whether it is AM or PM that is convenient for you and remain with it. Talk to your AI technician before commencing.
- This regime allows you to inseminate all heifers with 4 handlings and all are AI'd at a fixed time- No heat detection until the repeats.
- AI'ing the repeats ensures that the bulls are not overworked, avoids bulls getting injured and ensures we will have them when we need them.

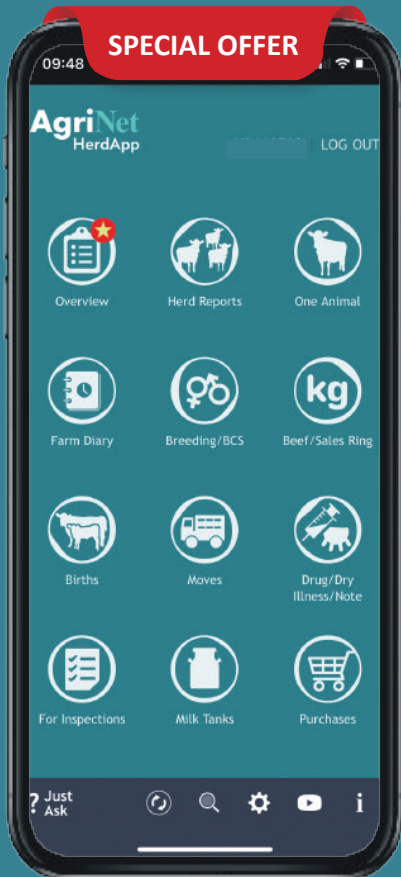
Note
 PG Prostaglandin- *Estrumate, *Lutalyse, *Enzaprost.
 GnRH- *Receptal, *Ovarelin.
 eCG- *Folligon PMSG, *Synchrostim.
 *POM prescription only medicines and under veterinary control.

Inadvertent administration of prostaglandin to a cow/ heifer during the first 3-4 months of pregnancy will cause abortion.



Your **No.1** Farm Management Tool

Everything for compliance, births, movements and remedies



AgriNet HerdApp gives you...

- ✓ 24/7 access to herd data
- ✓ AI & Breeding information
- ✓ Instant calf registrations
- ✓ Detailed animal reports
- ✓ All purchases, sales & deaths
- ✓ Fully Bord Bia Compliant

Our market leading software allows you to make the right management decisions for more profitable farming.

Free 30 day trial
with unlimited access
to all features.

"The best app at the best price."



Scan QR Code
for details



Email: herdapp@agrinet.ie

Call: 046 9249964

A.I. Technician Service: Professional, Reliable, Quality

Fertility performance you can trust. Technician & Semen fertility performance continuously monitored. Working to the highest professional standards. 363 days a year. **Call 0818 20 20 50** or contact your local technician.

Name	Area	Co	Phone	Name	Area	Co	Phone
Noel Mc Govern	Dowra	CN	087-7862261	Eamon Curley SC	North Monaghan	MN	087-2644610
Bartley Galligan	Cavan/Oldcastle	CN	086-0886767	Peter Christie	Carrickmacross/Castleblayney	MN	087-6866040
Eugene McGovern	Ballinamore	CN	087-2236691	Gregory Flanagan	Ballybay/Castleblayney	MN	086-1507280
Dudley Buchanan	Ballyjamesduff	CN	087-2236674	Micheál McPhillips SC	Clones/Newbliss	MN	087-6288109
Jimmy Reilly	Drumlish/Moyne	CN	087-2236707	Caolan Duffy	Relief Monaghan	MN	087-2709297
Thomas Sheridan MC	Ballinagh/Kilnaleck	CN	086-0616239	Michael K Kennedy	Relief Mayo	MO	087-9018842
Seamus Smith	Mountain Lodge	CN	087-9784205	Tommy Gannon	Charlestown/Swinford	MO	087-2057550
Sean Clerkin SC	Bailieborough/Cootehill	CN	083-1100108	Martin Calvey	Westport	MO	087-2365909
Ken Burns SC MC	Ballyhaise	CN	087-2722508	Pat Noonan	Claremorris	MO	087-6463481
Robert Smullen SC	Bailieborough/Virginia	CN	087-9426801	Pat Staunton	Ballinrobe	MO	087-3125209
Padraig Burns	Relief Cavan	CN	087-9700819	Anthony Barrett	Belmullet	MO	086-8312401
Aiden Clarke	Mountain Lodge/New Inn	CN	086-3861103	Michael Davitt SC	Easkey	MO	087-6719331
John Kelly	S.Carlow/E.Kilkenny	CW	087-7907475	Dermot Mullaney	Balla	MO	086-1032662
Noel McCarthy	Bagenalstown/Tullow	CW	087-2558437	Stephen Burke	Cloonfad	MO	086-3707643
Pat Byrne FB	Athy/Castledermot	CW	087-6292567	Michael Mulhern	Ballina/Crossmolina	MO	087-6810738
Liam Grennan	St. Mullins	CW	087-9058619	Matthew Kelly DH CA	Balla/ Boholo	MO	087-1034932
Jimmy Kelly CA DC	North Dublin/East Meath	D	087-6356207	Seamus Ruddy	Killala	MO	086-0618180
Anthony Kelly MC	Relief Dublin/Louth	D	087-0630094	John King	N.Tipperary/S.Offaly	OY	087-6669315
George O'Hagan	South Innisowen	DL	086-8198330	Kevin Rigney FB	Blueball/Rosenallis	OY	087-6866118
Denis Sweeney	NW Donegal	DL	086-2850300	Peter Grogan	Tullamore/Geashill/Portarlinton	OY	086-2002274
Eugene Gallagher	NW Donegal	DL	087-2057543	Donal Grogan	Relief Blueball/Rosenallis	OY	086-2719851
Thomas Boyd	NW Donegal	DL	085-7579026	Gabriel Connolly	Ballygar/Dysart	RN	087-6810726
Gerard McCool	Ballybofey Finnvalley	DL	087-2057588	Michael Tarpey	Elphin	RN	086-2459360
Noel Kelly	Termon/Creeslough	DL	087-2362198	Shane Keegan	Ballymoe	RN	087-6055550
Barry Doogan	Dungloe	DL	087-2245851	John Caulfield	Mid-west Roscommon	RN	086-2809031
Keith Mahon	S.Donegal	DL	087-2057592	Noel Dowd	Strokestown	RN	086-8036301
Bernie Cunningham	SW.Donegal	DL	087-2317480	Francis Clancy	N.Roscommon	RN	086-2511566
Michael Leonard SC	Pettigo	DL	086-6029960	Paul Fallon	S.Roscommon	RN	087-2670331
Willie Gallagher SC	Churchill	DL	086-8497666	Vincent Flanagan	Relief Roscommon	RN	086-8044379
Patrick Heraghty	Fanad/Ramelton	DL	086-4049592	Jacqueline Keane	Riverstown	SO	087-2601797
Noel Maxwell	Raphoe/Convoy	DL	087-2377011	Ger McGowan	Ballymote	SO	086-4081597
Ciaran Mc Grenaghan	North Innishowen	DL	086-1958698	Sean Caffrey	Ballina/Enniscrone	SO	087-6810725
Lar Martin	Carbury/ Edenderry	KE	086-2243309	John Kennedy	Charlestown/Ballaghadereen	SO	087-9934323
Joseph Harnett SC CG	Kilcullen/Dunlavin	KE	087-2587089	John Clancy	Kinlough/Lisadell/N.Sligo	SO	087-2441435
Kevin Cooney	N.Kildare/S.Meath	KE	087-2209323	David Clarke SC	Gurteen	SO	087-7679124
Jerry Whelan	North Kildare	KE	086-2582776	Fintan Mullarkey	South Sligo	SO	087-2057801
Richie Smyth	Carbury	KE	086-1937800	Michael Davitt SC	Easkey	SO	087-6719331
John Barron MC	S.Kilkenny	KK	087-9083170	Kieran Henry	Tubbercurry/Coolaney	SO	087-2057562
Denis Dalton MC SC	Castlecomer/Ballyragget	KK	087-6785875	Dan Duignan SC	Nenagh	T	087-2528855
John M Phelan MC	Piltown/Mooncoin	KK	087-2297672	Davey Phelan	Carrick-on-Suir	T	086-2504769
Tobias White MC	Kilkenny/Thomastown	KK	086-3084183	Richie Coady	Windgap/Grangemockler	T	086-2541587
Keith Phelan	Ballyhale	KK	086-2460896	Ross Donnelly	Nenagh	T	086-0815172
Eamonn Hawe	Windgap	KK	087-9805434	Ger Power SC	Castlecomer/Ballyragget	T	086-2158505
Gerard Fenlon MC	St.Mullins/Graiguenamanagh	KK	087-1254971	James Brennan	Mullinahone/Drangan/Ballingary	T	086-0144444
Barry Ryan	Callan	KK	086-8971076	David Phelan SC MC	Kill/Kilmacthomas	WD	086-8959558
Michael Murtagh	Longford Town	LD	087-9968177	Michael Kearney	Tramore	WD	086-8599790
Peter McEntire	Granard	LD	087-2758808	Pat Shanley	Moate/Athlone	WH	086-2535357
Seamus Kiernan MC	Moyne	LD	086-8211723	Enda Brazil	S.Westm'th/N.Offaly	WH	086-8182561
Paul Cotter	Monasterboice/Knockbridgwe/Ardee	LH	086-6074997	John Keena	Streamstown/Ballymore/Ballymahon	WH	087-2053277
Declan Neary WR	Dundalk/Inniskeen	LH	086-1017483	Mark Butler	Ballynacargy/Legan/Streete/Multy	WH	083-1273386
Fergal Shields FB	Relief Monaghan/Louth	LH	087-7906035	Conor Duncan	Mullingar/Rochfortbridge/Ballinagore	WH	087-0548810
Harry Banks SC	Drumahair	LM	086-8584804	James Butler SC	Relief Ballinacarrigy	WH	089 4215 903
Patrick Lippett	Kinlough	LM	087-9928067	Shane Kenny	Moate (Relief)	WH	087-747 5948
Ciarán McTiernan	Manorhamilton/Skreen	LM	086-8221943	Eamon Kealy	West Wicklow	WW	087-6796409
Damien Reynolds	Mid Leirtrim	LM	087-2594642	Kevin Fanning	NE Wicklow	WW	086-8851704
Eamon Kiernan	Ballyconnell	LM	087-2026603	Paddy Hurley	East Wicklow	WW	086-8111791
Ray O'Sullivan	Portlaoise/Mountrath	LS	087-2024328	John O'Hagan	Arklow/Gorey	WW	086-8598969
Albert Bailey	Durrow/Rathdowney	LS	086-3323504	Micheál Fogarty FB	South Wicklow	WW	087-9916132
Fergal Cuddy SC	Mountrath/Abbeyleix	LS	087-9188959	Ian Hamilton	Blessington	WW	087-2709627
Ciaran McCabe MC	Oldcastle/Castlepollard	MH	086-8454814	Pat Bracken	Relief Wicklow	WW	087-7971643
John Tuite	Athboy/Navan	MH	086-3699604	PJ Coady	Wexford Town	WX	087-3988986
Eoin Reynolds	Relief Meath	MH	083-1832045	Gerard Murphy	Adamstown/New Ross	WX	087-6833797
Eugene Connaughton	S.Meath	MH	087-2703768	Clive Whelan	South Wexford	WX	087-2935558
Shaun Tuite	Slane/Drumconrath	MH	086-1534415	Eugene Kehoe	Clonroche	WX	087-6842846
Leo Davis	Delvin/Kells/Mullagh	MH	086-8197114	Declan Buttle	Camolin/Craanford	WX	087-2498601
Kevin Tully DH MR	Kentstown	MH	086-8586167	Joe Doyle	Newbawn/Adamstown	WX	087-2213724
Donal Kearns	Dunshaughlin	MH	087-9019476	Denis Doyle	Ferns/Camolin	WX	087-6885125
Brian Murphy	Ballivor/Edenderry	MH	087-7952861	Eddie O'Byrne	Relief South Wexford	WX	086-1658142
Robert McGuinness	Slane	MH	086-3530613	James O Toole	Oulart/Monamolin	WX	087 962 4142
Anthony Neary	Rathmolyon	MH	086-7367303				



Breeding Advisor & Semen Sales



Gerard McCool
087 - 2057588
Donegal



John Griffith
086 - 8431624
Sligo, Mayo,
Roscommon



Deirdre Toal
087 - 2599314
Monaghan, Leitrim
Longford, Cavan



John McDaniel
087 - 2360318
Louth & Inniskeen Area



Michael Quinn
086 - 3892908
Meath, North Dublin



Leo Davis
086 - 8197114
Kells Area & Westmeath
East



Violet Nevin
087 - 6253395
Westmeath, North
Offaly



Trevor Hanly
087 - 2272446
087 - 9148922
Carlow, Wicklow, Kildare,
E Laois, Nth Wexford



Sean Hayes
087 - 2757835
Tipperary, West Laois,
South Offaly



Denis Dalton
087 - 6785875
Kilkenny



Ger Power
086 - 2158505
Kilkenny



John Fogarty
087 - 6752401
Part of Tipperary &
Kilkenny



Eugene Kehoe
087 - 6842846
South Wexford



David Phelan
086 - 8959558
East Waterford



Richie Smyth
086 - 1937800
North Kildare Area



Martin Regan
086 - 8216253
Beef Specialist, West of
Ireland



Shane Leane
086 - 7514121
Technical Sales
Manager



Seamus Hughes
087 - 2331235
Sales Manager



Padraic Mulconroy
086 - 0591485
Beef Specialist

Image: Ross Alo (AZL) daughter, John Kennedy, sold for €21,500 at Carrick Winter fair 2023

